

Product Information For Lowe's Customers



Modern ways to hide cables



Dear Lowe's customer,

D-Line USA, Inc. is a Kentucky based company with a global reputation for innovative cable management products.

We are delighted to offer Lowe's customers our market-leading & patented solutions to hide cords and cover cables. All products are 'easy to install, and look great'. They blend with modern décor, are produced to exacting quality standards, and ideal for use wherever 'time, safety & appearance matter'.

Whether you wish to hide unsightly cords, make an area cable-safe for pets or children, organize wires to make a surface easier to clean, or eliminate a cable trip hazard, we trust that D-Line products can best satisfy your requirements. This brochure highlights popular items in Lowe's assortment.

We hope all meets with your approval, and if we can be of any further assistance please never hesitate to contact us.

**With many thanks,
The D-Line team.**

salesusa@d-line-it.com



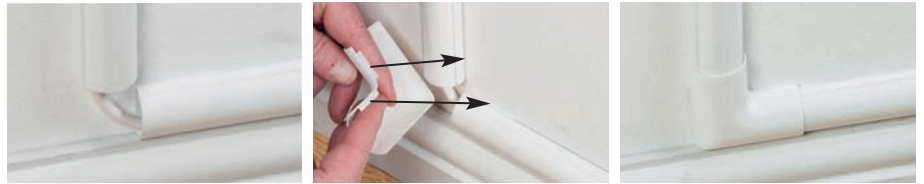


D-Line Raceway is designed to be 'easy to install, and look great!'. Before installing, please read this fitting guide.

Measuring up

Plan your cable hider path. Check that you have sufficient lengths to cover the length of cable(s).

Next consider any accessories needed for corner bends or tee connections etc.



Cutting & Installing Lengths



- 1 Consider the space needed for any accessories, then measure length(s). Pencil mark the length where a cut is required, if a shorter length is needed.
- 2 Using a cutting block and junior hacksaw, take care to cut at the outer edge of the pencil mark.
- 3 Remove the protective film cover.
- 4 To peel & stick, make sure the surface is clean & dry. Take care when positioning lengths, as a strong bond will be created with the surface. Alternatively lengths can be drilled and screw fixed; we recommend screw fixing for 2" width bases (as mainly used for heavier cables)
- 5 For easier installation we recommend that horizontal runs are fixed with the click-lock at the top and hinge at the base.

Installing cables & accessories

Lay cable(s) into lengths → Close the lid, ensuring it snaps shut → Clip the accessory in place.

Clip-Over accessories allow a tolerance for imprecise measurements and untidy cuts. The tabs simply clip over the top of the lengths. Some accessories have a self adhesive dot applied to the reverse; please use if applicable.

Where relevant, please note the maximum spacing gaps required for accessories, as pictorial guides below...

½ Round Internal Bend



Join lengths around 90 degree inside corners.

½ Round External Bend



Join lengths around 90 degree outside corners.

¼ Round Internal Bend



Join lengths around 90 degree inside corners.

¼ Round External Bend



Join lengths around 90 degree outside corners.

½ Round Flat Bend



Change direction by 90 degrees on flat surfaces.

½ Round Equal Tee



Use to join 3 lengths of same profile.

¼ Round Cable Inlet/Outlet



Use to provide cable entry/exit point between 2x ¼ round lengths.

All Connectors



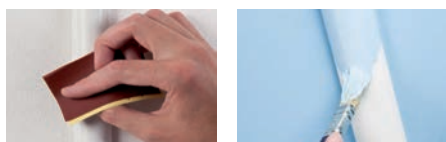
Join 2 lengths of same profile on flat surface.

All End Caps



Simply push in, to neatly finish open ends.
Note: ¼ Round has left and right sided end-caps

After Care



D-Line can accept gloss or emulsion paints.
For best results use fine sandpaper to key the surface prior to painting.

Any queries?

Please contact us
salesusa@d-line-it.com

Micro+ Cable Cover 0.78" x 0.39"



D-Line 0.78"(W) x 0.39"(H) Micro+ Cord Hiders provide a neat solution for organizing single cables. Being small & ½-round they offer a stylish and discreet appearance.

Complementary Clip-Over accessories including bends & tees are incredibly easy to install.

Use Micro+ Cable Covers to hide a flexible cord (up to 0.31" outer diameter), also fiber-optic, satellite/aerial and broadband cable installations.

- Unique stylish 'D-Line' appearance
- Patented hinge & click-lock lid
- Self-adhesive for peel & stick
- Paintable
- Clip-Over bends & tees for perfect finish
- 'Easy to install, looks great!'
- Smooth in-line connectors & push in end caps

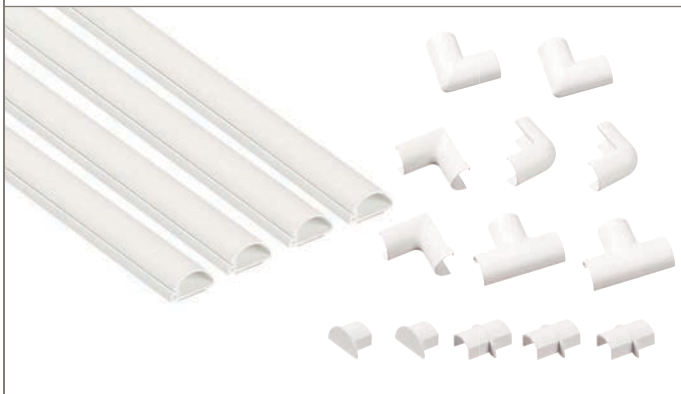
Micro+ 5' Single Lengths



Micro+ 4x 39" Lengths & Accessories



Micro+ 4x 5' Lengths & Accessory Kit

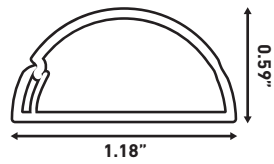


Micro+ Clip Over Accessory Pack



D-LINE

Mini Cable Cover 1.18" x 0.59"



D-Line 1.18" x 0.59" Mini Cable Covers offer a subtle appearance that can make pesky cords seemingly disappear.

The ½-round shape can blend to resemble the natural top-section of baseboards, and also gives a modern & stylish solution to conceal vertical cord drops.

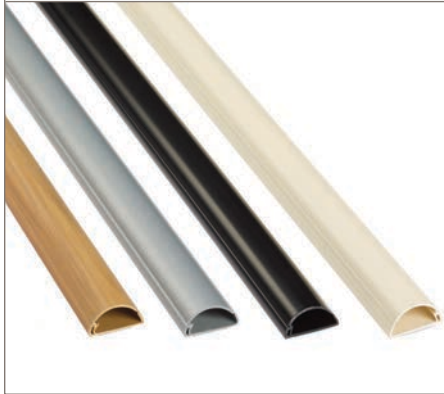
Ideal for 2 or 3 popular cables, this versatile cable hider can blend with decor or create a striking visual feature.

- Unique stylish 'D-Line' appearance
- Patented hinge & click-lock lid
- Self-adhesive for peel & stick
- Paintable
- Clip-Over bends & tees for perfect finish
- 'Easy to install, looks great!'
- Smooth in-line connectors & push in end caps

Mini 5' Single Lengths



Mini 3'3" Single Lengths - Almond, Black, Aluminium Effect & Oak Effect



Mini 4x 39" Lengths & Accessories



Mini 4x 5' Lengths & Accessory Kit



Mini Clip Over Accessory Pack



Maxi Cable Cover 2" x 1"



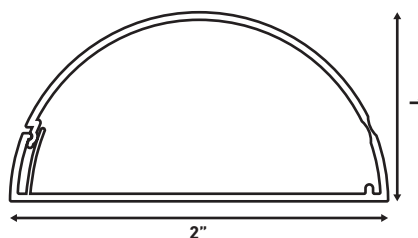
D-Line 2"(w) x 1"(h) Maxi is a versatile and popular cable hider, providing capacity to contain several cables.

2" x 1" profiles are popular to contain HDMI and aerial cables dropping from wall mounted TV's... scaling very well for example with 50+" width screens.

The effective adhesive backing can be useful as a positioning guide, then the lengths can be drilled and screw attached to the wall for extra security.

Using D-Line Raceways saves the need to channel behind walls or having to use wall cavities to contain cables - being on the surface makes quickest installations, with the hinged and click-lock lid making it easiest to later add or remove cables.

- Unique stylish 'D-Line' appearance
- Patented hinge & click-lock lid
- Saves channelling walls
- Use peel & stick tape as a guide, then can be screw-fixed for best practise
- Paintable
- A smart alternative to traditional offers
- No sharp edges, gentle on impact



Maxi 3'3" Single Length - White



Maxi 3'3" Single Length - Black



Maxi 3'3" Single Length - Aluminum Effect



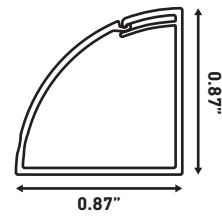
Maxi 3'3" Single Length - Almond



Maxi 3'3" Single Length - Oak Effect



¼ Round Cable Cover 0.87" x 0.87"



¼-Round 0.87"(w) x 0.87"(h) lengths are a perfect and easy-to-use cable raceway to hide cable(s) around floor perimeters (or in corners & on benches).

Traditional floor edging is usually nailed, and requires perfect measuring of lengths that need to be cut at 45° angles...

By contrast D-Line ¼-round simply peels-and-sticks to baseboards, while the Clip-Over corner-bends save the need for precise measuring (and cover any uneven cuts!)

Compared to traditional floor edging, D-Line's features combine to enable approximately 50% quicker installations – and it's easy to add or remove cables!

- Unique stylish 'D-Line' appearance
- Easy to install, looks great!
- Self-adhesive, simply peel & stick to baseboards
- Clip-Over corner bends available
- A smart alternative to traditional floor trims
- Shock-absorbing hinge effect
- Use on benches & worktops also, or to hide vertical cable drops in corners
- Simple to later add or remove cables

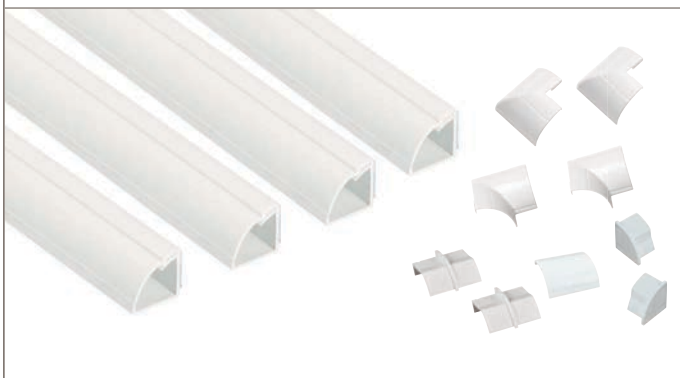
¼ Round 5' Single Lengths



¼ Round 4x 39" Lengths & Accessories



¼ Round 4x 5' Lengths & Accessory Kit



¼ Round Clip Over Accessory Pack



Floor Cable Protectors



Floor Cable Protectors are ideal as a temporary solution to cover cords across open areas with light foot traffic.

The 0.75" x 0.34" cavity can accommodate 2x 0.31" outer diameter flex cables.

- Ideal for areas with light foot traffic
- Address a common cause of trips and falls
- Can protect up to 2x 0.31" diameter cables
- Ribbed non-slip base, pre-split rear for ease of use
- Flexible PVC - simply uncoil to lay flat
- Neat tapered design



Light Duty Floor Cable Cover - Black



6' & 30' Length options

Light Duty Floor Cable Cover - Gray



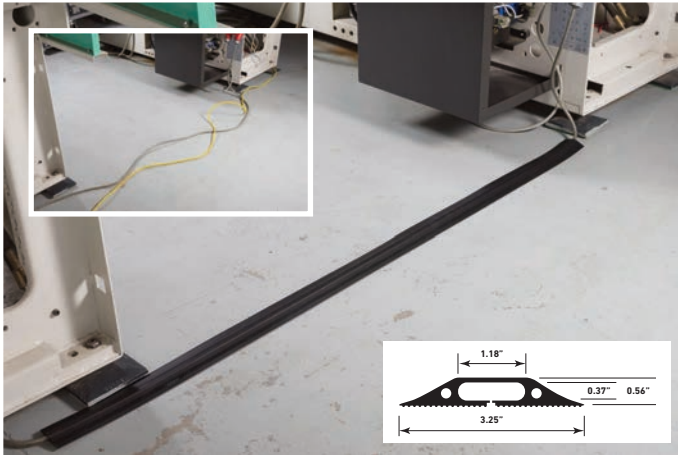
6' Length options

Light Duty Floor Cable Cover - Beige



6' Length options

Linkable Floor Cable Protectors



Linkable profiles uncoil to effectively lay flat across surfaces, while the sloping sides are pedestrian-friendly.

The pre-split back enables users to simply retro-fit the length over the cables. Then cables are contained within the cavity.

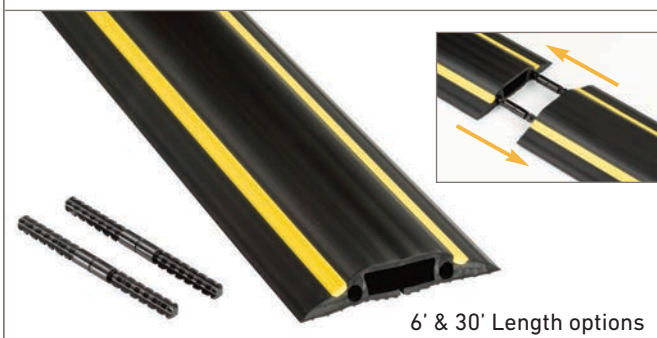
Unique connector pins provide an effective friction-fit connection that can be pushed-in, then later pulled apart, in adjoining lengths – to cover whatever length of cable is required.

- Ideal for areas with regular foot traffic
- Protect up to 3x 0.31" diameter cables, and address a common cause of trips and falls
- Ribbed non-slip base, pre-split rear for ease of use
- Flexible PVC - simply uncoil to lay flat
- Neat tapered design

Medium Duty Floor Cable Protector - Black



Medium Duty Floor Cable Protector - Black & Yellow



Rigid Cable Covers



D-Line drop over rigid Cable Protectors can accommodate cables or hoses up to 0.8" diameter. Each length has a simple and effective locking mechanism, so runs can be made in any length required.

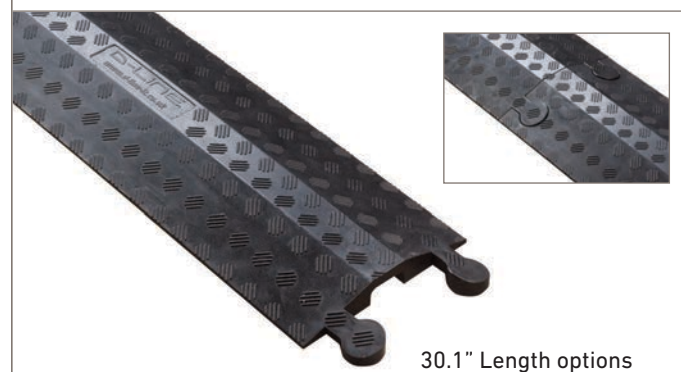
Anti-slip treads and tapered sides are pedestrian friendly, while the strength of these cable protectors can accept vehicular loads.

- Made from high-grade polyurethane, extremely robust
- Join by interlocking male:female connectors
- Tapered design & non-slip treads for pedestrian traffic
- Durability gives exceptional value



Inner Channel: 30.1" (L) x 1.75" (W) x 0.8" (H)

Rigid Cable Cover - Black



Cable Organizer Boxes - Large & Small



D-Line Cable Organizer Boxes provide a popular solution to contain power strips. With 3x rear cable entry/exit slots enable cords to be routed to left-side, right-side or vertical.

Fully safety tested, and produced from electrically-safe robust ABS material with an effective click-lock lid.

Use Large unit to contain up to 13.38" length, and Small unit to contain up to 11" length popular extension sockets.

- Organize, route & sort unsightly cable clutter
- Reclaim space, so surfaces are easier to clean
- Address cable trip & spill hazards
- Prevent feet snagging cables under desks
- Stylish & functional design
- Effective click-lock lid
- Produced using electrically-safe ABS material... fully safety tested

Cable Organizer Box Small - Black



1x **Box** - 12.75"(L) x 5"(W) x 4.5"(H) Power strip not included

Cable Organizer Box Small - White



1x **Box** - 12.75"(L) x 5"(W) x 4.5"(H) Power strip not included

Cable Organizer Box Large - Black



1x **Box** - 16.5"(L) x 6.5"(W) x 5.25"(H) Power strip not included

Cable Organizer Box Large - White



1x **Box** - 16.5"(L) x 6.5"(W) x 5.25"(H) Power strip not included

Cable Accessories

Cable Split Tube - Black



1x 3' 7" Length

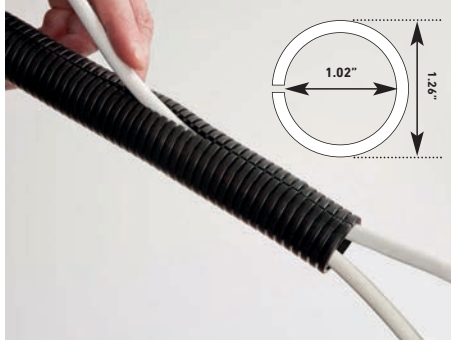
- Ultra flexible LDPE material, supplied pre-split for easy manual insertion of cables
- 3ft 7in length - ideal to contain cords from desks (or TV's) to floor
- Ideal to contain cables dropping behind TVs and desks



Cable Split Tube - White



1x 3' 7" Length

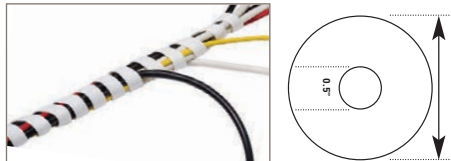


Cable Wrap - Black



1x 8' Length

- Can stretch to 1.5" diameter
- Ideal to protect/contain bundles of cables
- Cables can enter, or exit, at any point along length



Cable Wrap - White



1x 8' Length



Cable Zipper - Black



1x 8' Length

- Ideal to conceal & protect longer runs of cables
- Quick and easy to use - scissor cut to length



Cable Bases - White, Black & Gray



1x 6 Pack

- Self-adhesive
- Ideal to keep cables handy!



Safe-D Stag Clips - Single & Twin



Safe-D Stag Clips can be first-fixed with their lower barbs gripping in pre-drilled holes, ready for second-fix cabling works.

After cable(s) are inserted in the head section, installers simply push home the smooth head to give a tight fitment around either one or two cables.

The Stag Clip design eliminates any need to ever handle the sharp barbs, while inserting cables is incredibly simple and no screws, or anchors are required.

- Secure cables, with no need for screws or anchors
- Ideal for brick, concrete, wood & drywall
- Drill 0.22" pilot hole, then partially insert (ready for cables)
- To secure, push home smooth-head
- Produced from fire-rated sprung steel
- Options for cables up to 0.39" diameter

Stag-Clip Single - Galv



For 1x Cable - 1x 0.24" - 0.31" diameter - Pack of 50

Stag-Clip Single - Galv



For 1x Cable - 1x 0.31" - 0.39" diameter - Pack of 50

Stag-Clip Twin - Galv



For 2x Cables - 2x 0.24" - 0.31" diameter - Pack of 50

Stag-Clip Twin - Galv



For 2x Cables - 2x 0.31" - 0.39" diameter - Pack of 50

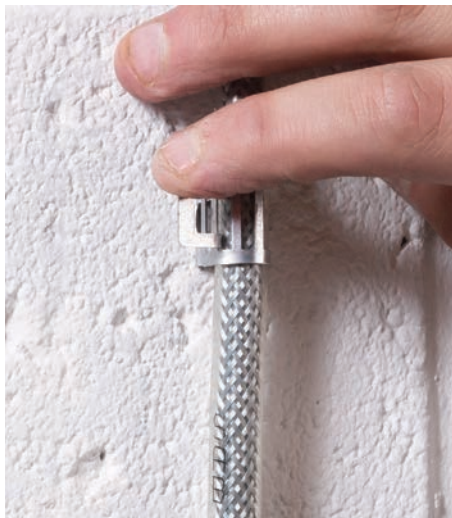
Safe-D Adjustable Cable Clips - Single & Twin



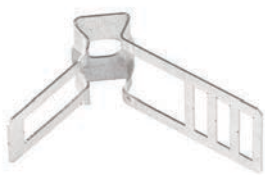
For direct-to-surface applications, Safe-D Cable Clips secure cables (or pipes) having diameters ranging between 0.39" and 1.02".

The one-piece design requires only one screw-fixing through base, before the cable is placed in the saddle. The arm can then be simply rolled over the cable, with the end tab passing via a choice of slots... then folded to lock.

- Select the most appropriate slot, then fold-down the tab to achieve a tight fitment around the pipe
- Oval shape of base hole enables the Safe-D Cable Saddle to be adjusted left or right-side
- Flexible steel can wrap around pipes or cables
- Only one screw-fixing required in base
- Locking tabs for secure hold
- Simply wrap & lock
- Tight fitment for best aesthetics

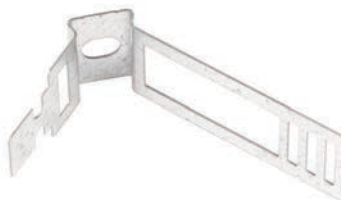


Adjustable Cable Clip - Galv



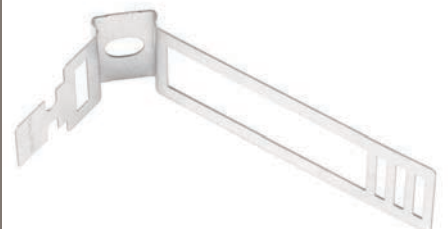
0.39"-0.59" - Pack of 20

Adjustable Cable Clip - Galv



0.63"-0.83" - Pack of 20

Adjustable Cable Clip - Galv



0.87"-1.02" - Pack of 20



D-Line (USA) Inc

1841 Taylor Avenue, Building 39, Louisville KY40213 U.S.A

Email: salesusa@d-line-it.com **Web:** www.d-line-it.com