

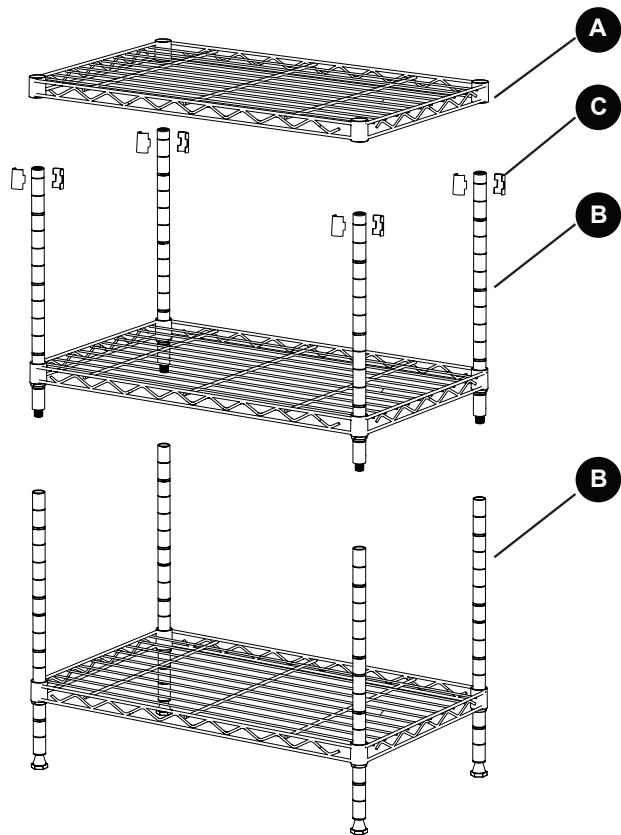
CARE AND MAINTENANCE

Never use abrasive or acid-based cleaners on the shelf rack. Clean shelves and rods with a solution of mild detergent and water. Use a soft cloth or sponge to wipe parts. Rinse and dry thoroughly. Keep surfaces dry and clean for a longer lasting finish.

NOTICE

Please read and understand these instructions before attempting to assemble, operate or install the product.

- Two adults required for a assembly.
- Do not allow children to climb or play in or around the shelves.
- Assemble on a soft surface, such as carpeting to avoid scratching the finish.



Reference Photo

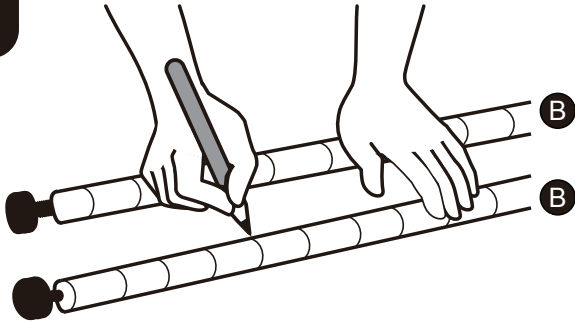
Part	Description	Picture
A	Shelves	
B	Poles	
C	Spacers	

PREPARATION

- 1.Before beginning assembly of product, make sure all parts are present. Compare parts with package contents list and hardware contents . If any part is missing or damaged, do not attempt to assemble the product.
- 2.Estimated Assembly Time: Approximately 15 - 25 minutes.
- 3.Helpful Tools (not included):Rubber Mallet.
- 4.Decide on the shelf location before beginning the assembly.Once the Product is assembled,it is very difficult to move a shelf without taking the entire assembly apart and starting over.
- 5.No Tools Required for Assembly.

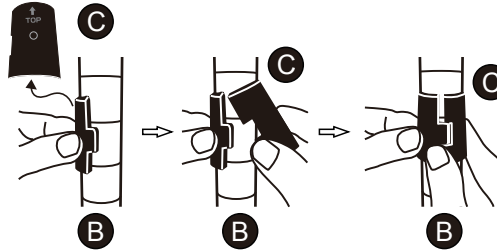
Assembly Instructions

1



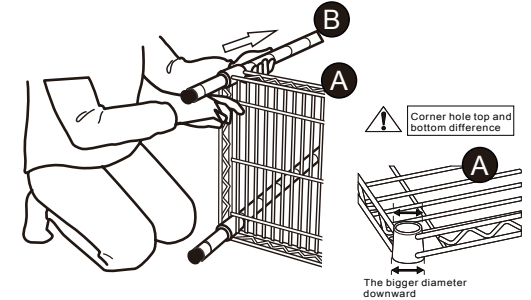
Use a pen to mark the height on the 4 Poles (B) with levelers. Be sure all poles are marked in the same location.

2



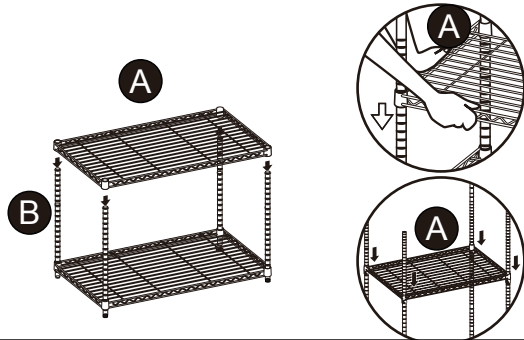
Attach 2 Spacers (C) at the pen marks on the 4 Poles (B). Keep the arrows on the spacers (C) pointed upwards.

3



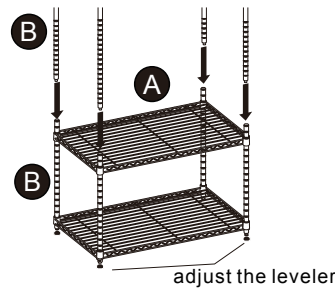
Place the Poles (B) with levelers through the corner holes of 1 Shelf (A). Fit the shelf carefully and securely over the Spacers (C).

4



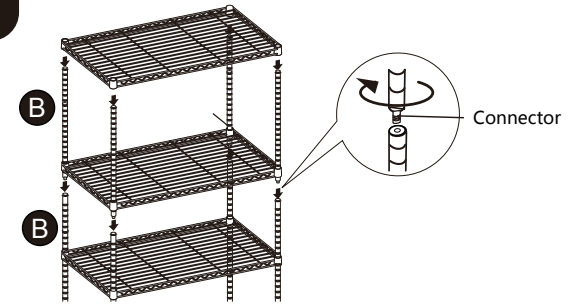
Install the second Shelf (A) following steps 2-3.

5



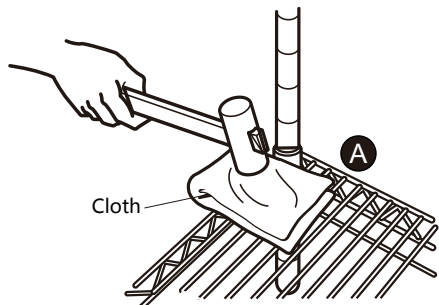
If it is 2-section or 3-section pole, screw the Pole (B) onto the threaded ends of the installed Poles (B). Be sure the connection is secure & tight.

6



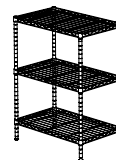
Install remaining Shelves (A) following steps 2-3.

7

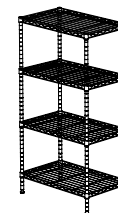


Use the rubber mallet to tap the shelves into place for a secure fit. Use a soft cloth between the shelf & mallet to prevent damage to the shelf.

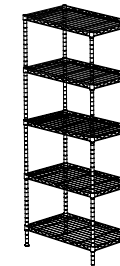
8



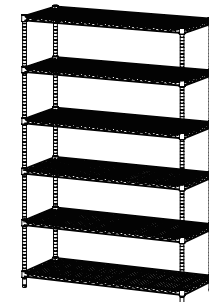
3-Tier wire shelving



4-Tier wire shelving



5-Tier wire shelving



6-Tier wire shelving

Assembly is Completed.
See the assembly photo with different tier shelves for your reference.