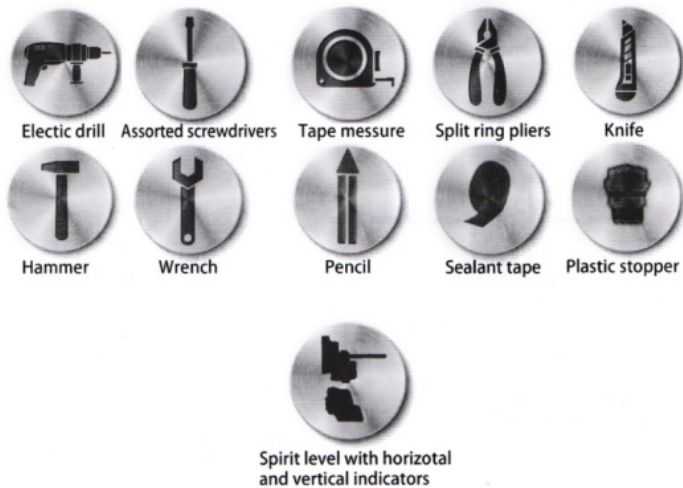


Installation process

1. Prepare the tools before the installation

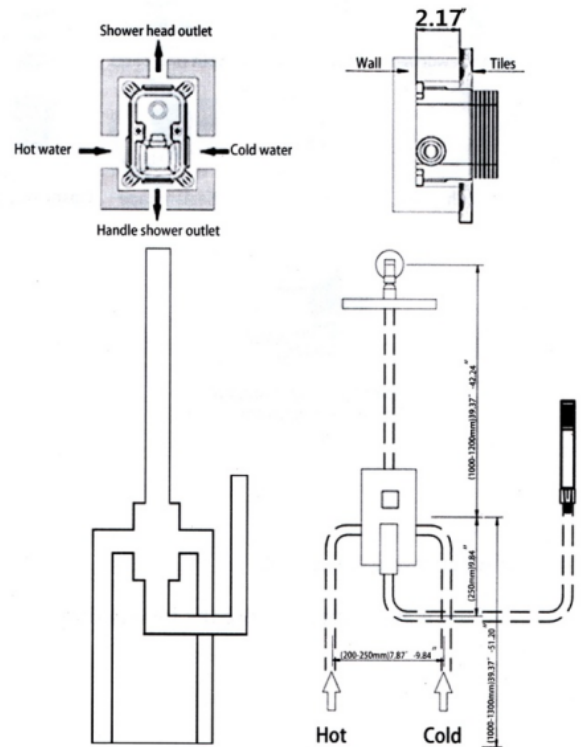


Note: Be careful when using these tools.

2. Please turn off the water supply before the installation

1

3. Determine the installation position and height according to the actual situation, and the optimum depth of the water control valve body (According to the following instructional pictures)

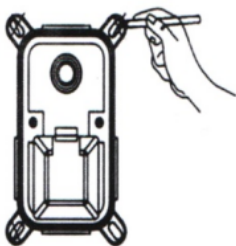


Note: The optimum depth of the water control valve body into the wall is 2.17 inch (55mm) to 2.56 inch (65mm).

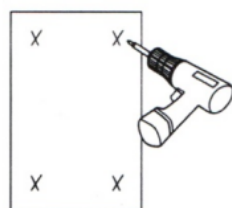
2

4. Install the water control valve

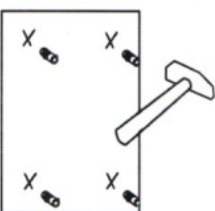
- (1) The installation position and height of water control valve can be determined according to your own actual situation.
- (2) Please use the level to ensure the valve installation level.
- (3) Please see the installation steps as follows:



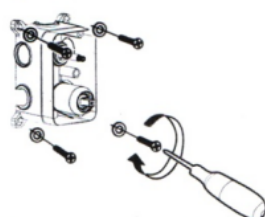
① Determine the position of the water control valve, Mark the screw position



② Use electric drill to punch according to the mark



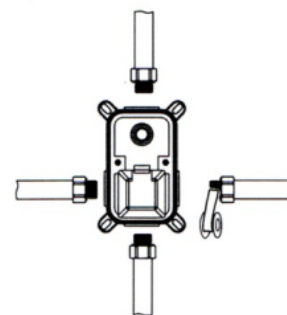
③ Punch the plastic screw sleeve into the hole with hammer



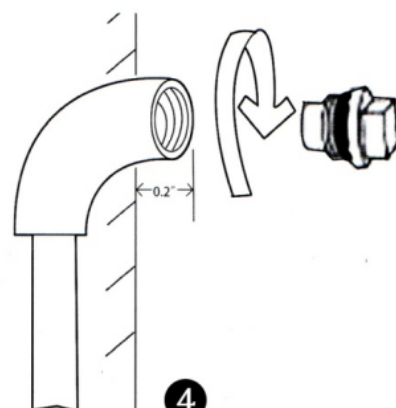
④ Use screwdrivers to tighten the metal washers and screws into four plastic screws

3

5. Connecting the inlet and outlet pipe with the valve body, Please notice that before connecting the shower control valve, flush the water inlet pipe to ensure the water inlet pipe has no impurities;



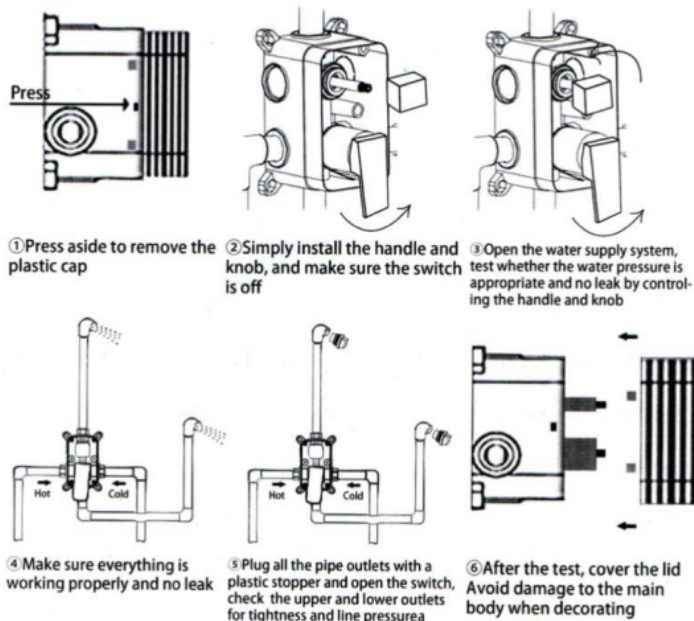
Depth of the outlet pipe, pipe bracket is installed 0.2 inch (5mm) from the front of the finished wall.



4

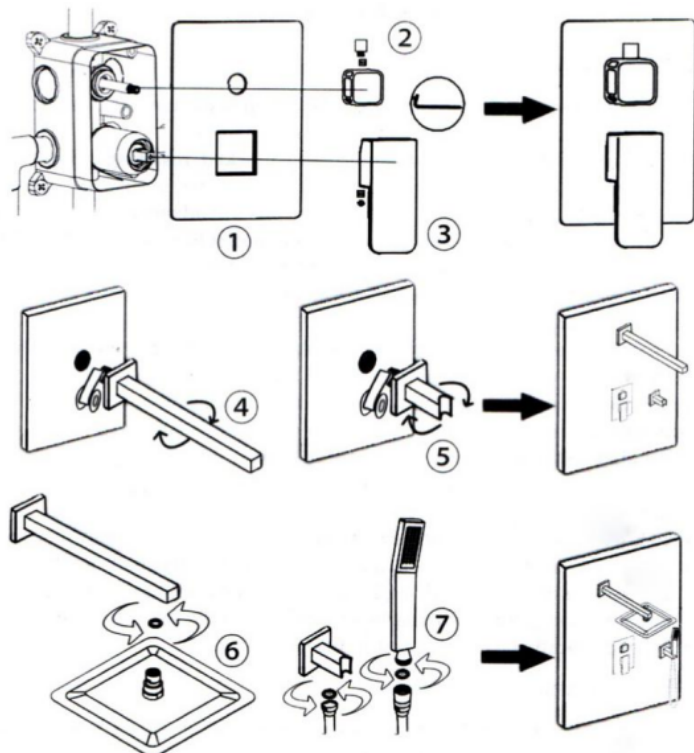
6. Test work

Check the water pressure and water temperature to prevent blockage and leakage.



Note: Test work is a very important step, make sure everything is ok before decorating.

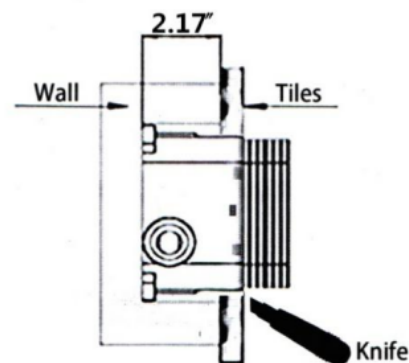
5



9. Finished, and enjoy your easeful shower life

7

7. After installing the tile, before installing the shower valve panel, cut the box of the embedded box according to the actual installation depth so that the panel is well installed.



Note: The best depth of the water control valve body into the wall is 2.17inch (55mm), according to the actual installation depth, it is no need to cut box usually, just remove the cover.

8. Install the accessories outside the wall.

- Including:
- ① Valve panel
 - ② Knob
 - ③ Handle
 - ④ Shower arm
 - ⑤ Hand shower head
 - ⑥ Shower head
 - ⑦ Shower holder

6

SYMPTOM

1. No flow or low flow

- (1) **The water pressure in the water supply system is too low** - Increase the water supply pressure, or install a booster pump
- (2) **Inlet pipes, outlet pipes, or other pipes are blocked, resulting in low water flow** - Please flush the pipes or contact the plumber for disposal (please follow the installation steps above to clean the pipes in advance).
- (3) **Shower head, hose, thermostatic valve inlet/outlet blockage, resulting in low water flow** - Regular cleaning to prevent impurities from clogging
- (4) **The filter inlet is partially blocked** - Clean or repaint and flush the tubing before reinstalling.
- (5) **Correctly use the handle to adjust the water temperature, the water is too cold or too hot** - check the water pressure of the water supply system, increase the water flow or pressure through the booster pump, if the water heater fails, you need to contact the water heater manufacturer to solve.
- (7) **The distance of the water jet is too short** - You need to increase the water pressure (check and adjust the water pressure in the water supply system, or install a booster pump), or pick up the hand shower.
- (8) **No hot or cold water reaches the shower valve** - Check the cold water and hot water inlet pipes (if the hot or cold supply fails, the valve will close).
- (9) **Incorrect installation, resulting in improper inlet pressure** - Please refer to the Installation requirements section to ensure that the inlet pressure maintained is normal/balanced and sufficient.

2. Water temperature change

The water temperature suddenly becomes high or low during the shower. - A large amount of cold water or hot water is taken from other places, causing the water pressure to change. Do not use other water outlets during the shower or check if the water heater is working properly.

3. Shower head dripping

- (1) **The dripping water is normal if in short time** - You would try to change the angle of the shower head which may solve this problem.
- (2) **If it is a long period of dripping, that may be the shower control valve has not been completely closed** - Remove the shower control valve assembly and check if the shower valve is blocked.
- (3) **The flow control valve seal is damaged** - Check the status of the flow control valve and replace as needed.

8