

DANGER
If you smell gas:
1. Shut off gas to the appliance.
2. Extinguish any open flame.
3. If odor continues, keep away from the appliance and immediately call your gas supplier or fire department.

WARNING
Do not store or use gasoline or other flammable vapors and liquids in the vicinity of this or any other appliance. An LP-cylinder not connected for use shall not be stored in the vicinity of this or any other appliance.

WARNING
For outdoor use only.



Design certified under ANS
Z21.97 - CSA 2.41-(2012)
Requirements for Outdoor Gas
Fireplaces

DANGER

CARBON MONOXIDE HAZARD
This appliance can produce carbon monoxide which has no odor.
Using it in an enclosed space can kill you.
Never use this appliance in an enclosed space such as a camper, tent, car or home.

allen + roth® is a registered trademark
of LF, LLC. All Rights Reserved.

ITEM #0472966

FIRE TABLE

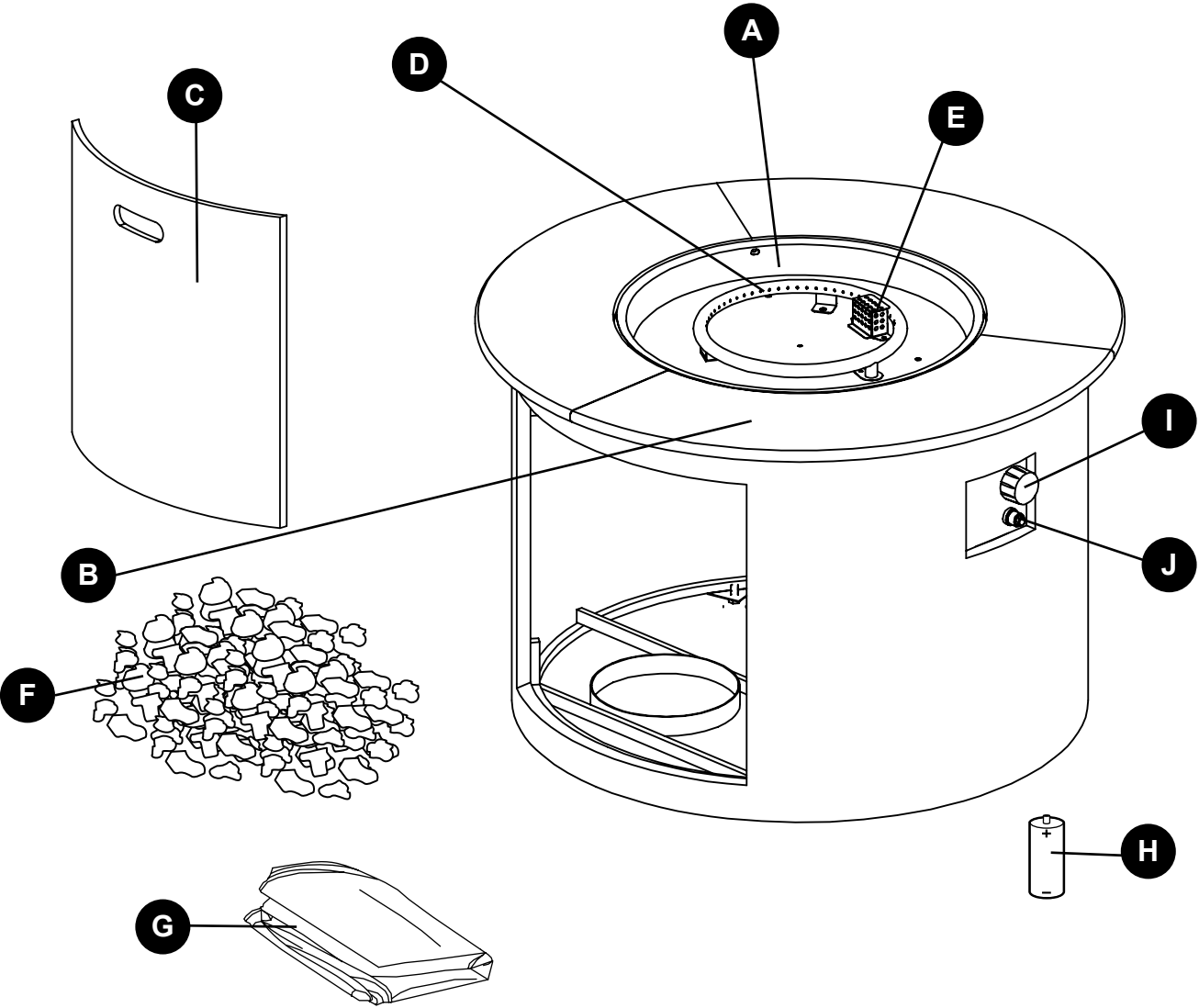
MODEL #67385

ATTACH YOUR RECEIPT HERE

Serial Number _____ Purchase Date _____

Questions, problems, missing parts? Before returning to your retailer, call our customer service department at 1-866-439-9800, 8 a.m. – 8 p.m., EST, Monday - Friday.

PACKAGE CONTENTS



PART	DESCRIPTION	QUANTITY
A	Fire Bowl	1
B	Body	1
C	Door	1
D	Burner	1
E	Guard	1
F	Lava Rocks	2 boxes
G	PVC Cover	1
H	Battery	1
I	Control Knob (preassembled)	1
J	Electric Igniter (preassembled)	1

PREPARATION

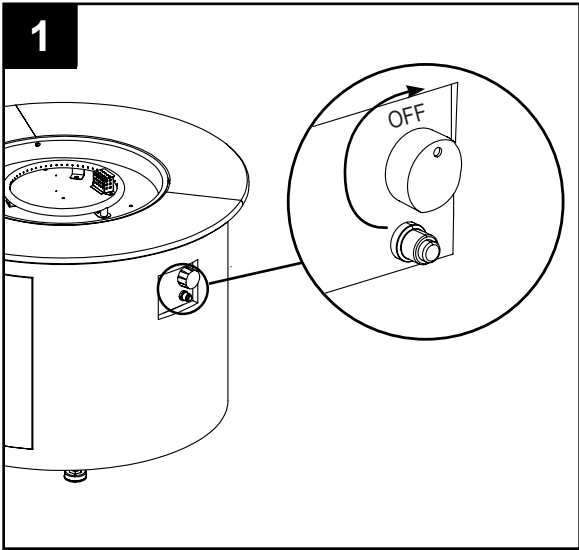
Before beginning assembly of product, make sure all parts are present. Compare parts with package contents list. If any parts are missing or damaged, do not attempt to assemble the product.

Estimated Assembly Time: 5 minutes

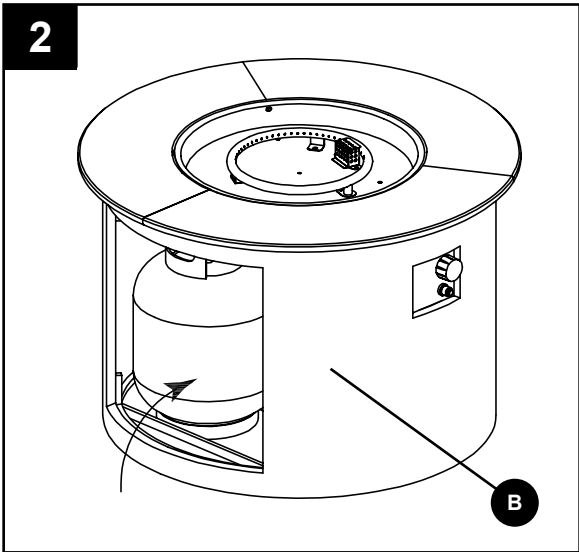
NOTE: You must follow all steps to properly assemble fire table. Make sure the gas valve is turned “OFF” before assembling. DO NOT attempt to assemble without proper tools.

ASSEMBLY INSTRUCTIONS

- 1. Make sure the control knob (I) for the gas supply system is turned to “OFF”.

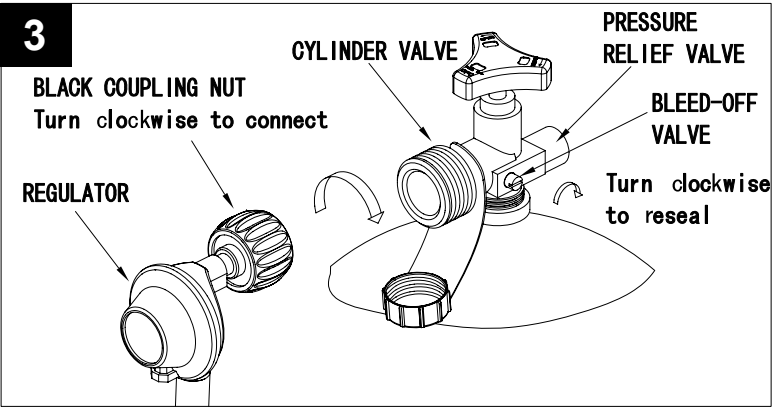


- 2. Remove door (C) and place propane gas tank (not included) in the metal stand inside the body (B).

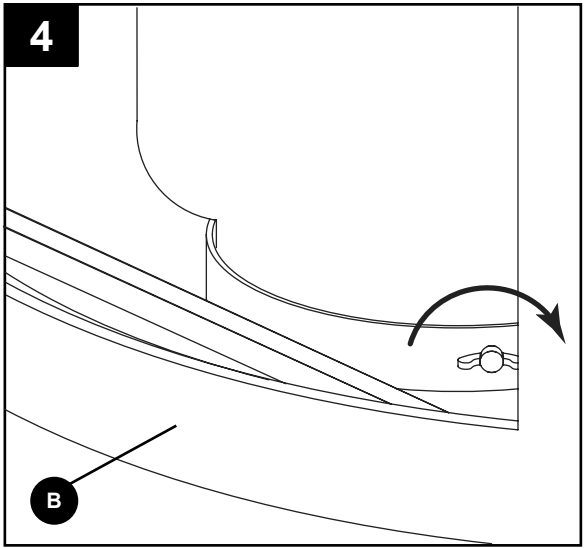


ASSEMBLY INSTRUCTIONS

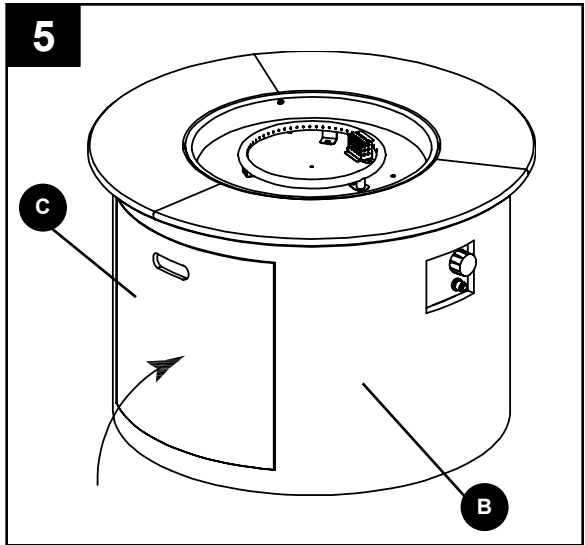
- 3. Turn the cylinder valve on the tank clockwise to close the gas supply on the propane gas tank. Attach the preassembled regulator from fire bowl (A) to the cylinder valve by turning the regulator coupling nut clockwise by hand only. Make sure it is fastened securely.



- 4. Once the tank is attached to the item, make sure the propane gas tank sits on the metal stand inside body (B) completely. Turn the preassembled wing screw on the outer part of metal stand clockwise to secure the propane gas tank tightly.

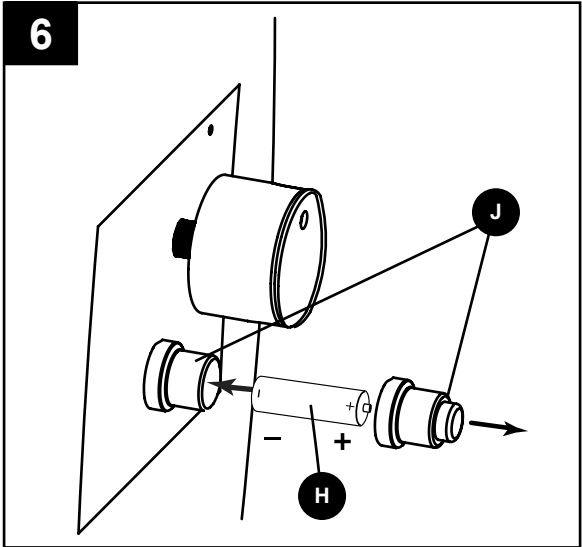


- 5. Replace door (C) onto body (B).



ASSEMBLY INSTRUCTIONS

6. To install the battery (H), unscrew the rubber cap of the electric ignitor (J) and place battery (H) into the battery case. Make sure the positive pole (“+”) faces out towards the cap. Screw the cap back onto the electric ignitor (J) tightly.



7. Place the lava rocks (F) evenly in the fire bowl (A).

! CAUTION

The screen in this fire table MUST be clear and free of obstructions at all times to ensure proper operation. Make sure the fire table is covered completely with lava rocks lest the flame extinguish occasionally.

