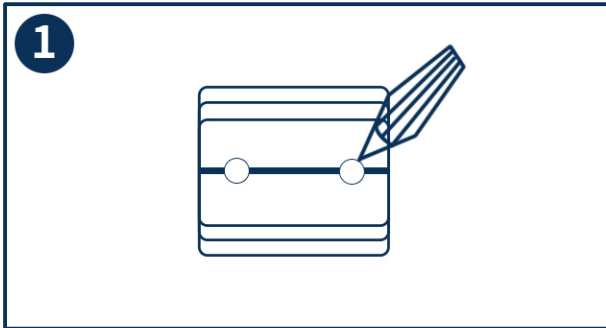


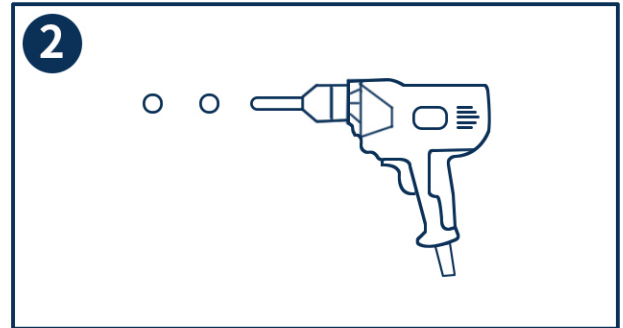
INSTALLATION AND MAINTENANCE

If you have any questions, please feel free to contact us.

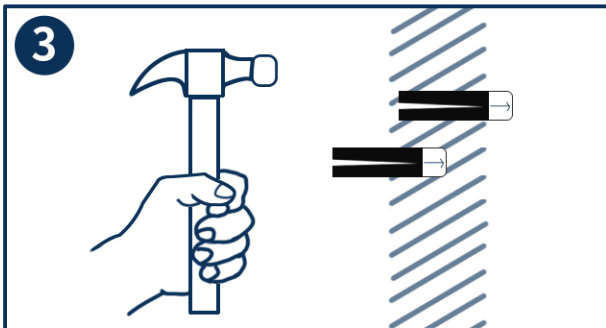
Email: lowesteam@aminalife.com



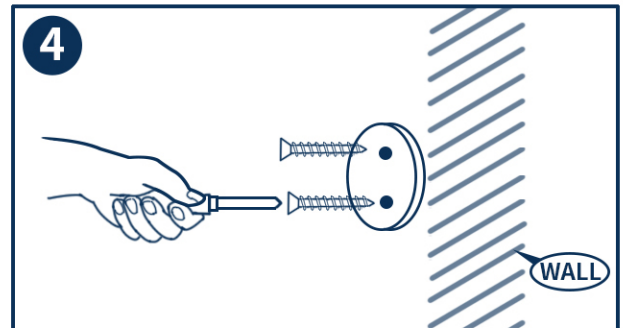
**1. FIRST MARK THE POSITION OF THE HOLE
IN THE WALL**



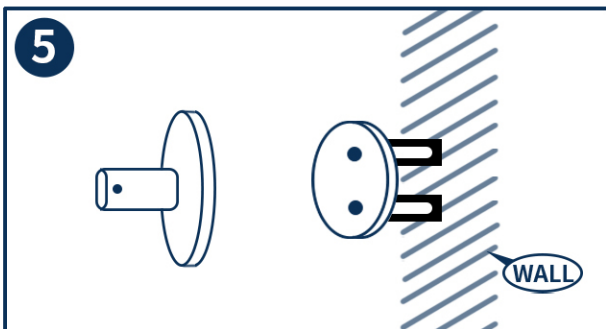
**2. USE THE M6 BIT TO PUNCH HOLES IN THE
MARKED POSITION**



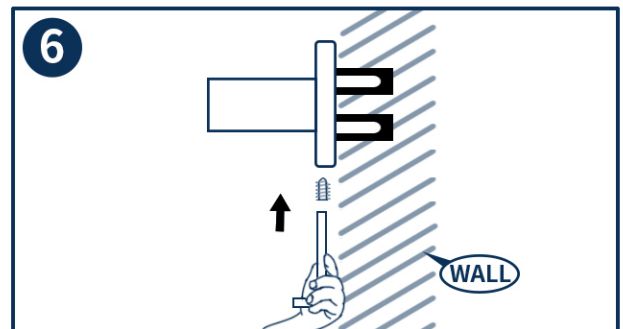
**3. USE THE HAMMER TO PUSH THE PLASTC
EXPANSION PIPE INTO THE HOLE**



**4. TIGHTEN THE STAINLESS STEEL SCREWS
WITH A SCREWDRIVER AND FIX THE GASKET**



**5. PLACE THE PRODUCT BASE IN THE
GASKET POSITION**



**6. SCREW THE BASE POSITION WITH
WRENCH OF THE DISTRIBUTION**