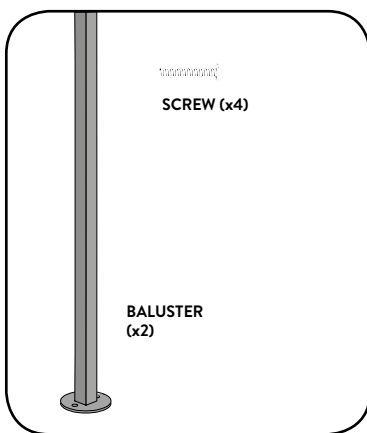


## HOW TO INSTALL YOUR BALUSTER

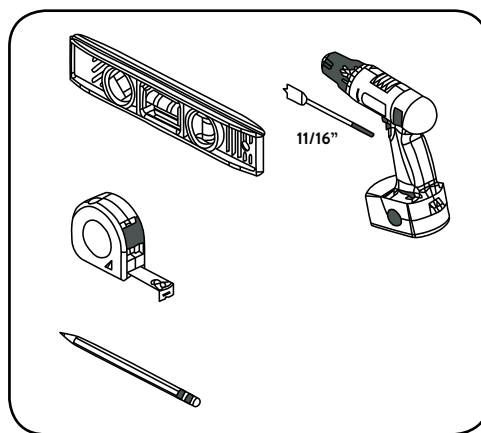
### DUO BALUSTERS - FORGE COLLECTION

**IMPORTANT - PLEASE READ ALL INSTRUCTIONS BEFORE YOU BEGIN INSTALLATION.**

- These instructions are for a square metal baluster.
- Refer to your local building code for current regulations.

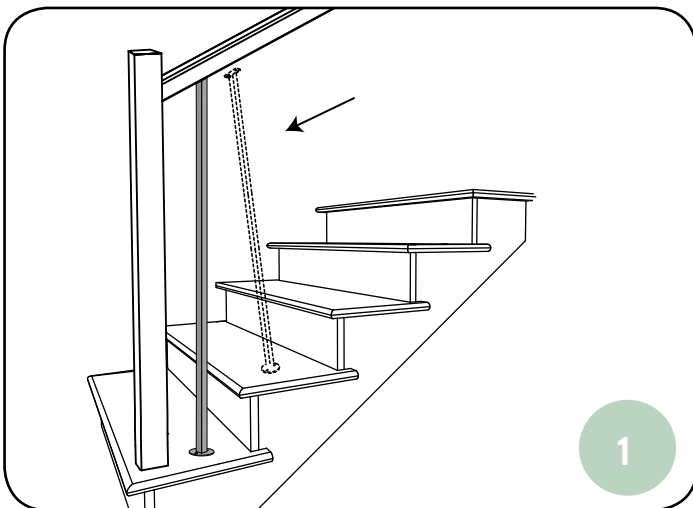


Parts included

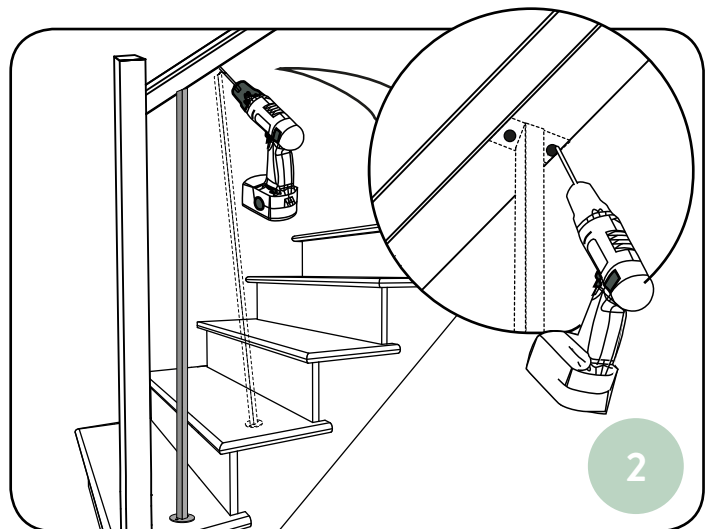


Recommended tools

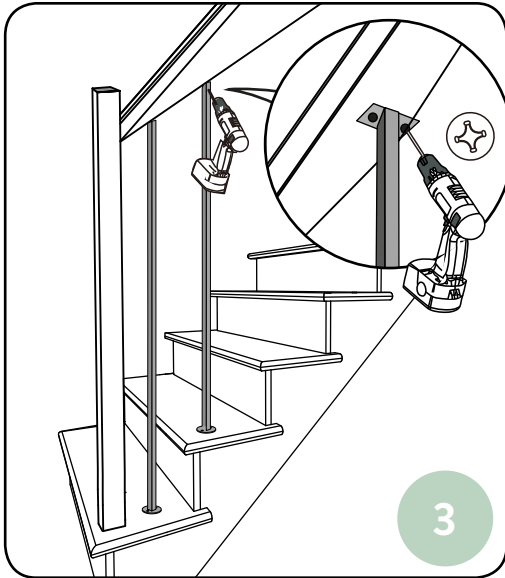
## 1. Baluster installation



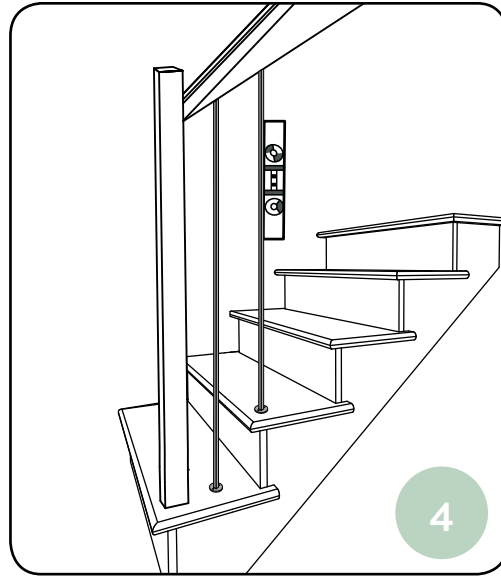
Slide the baluster along the tread so that the head of the baluster is resting on the handrail.



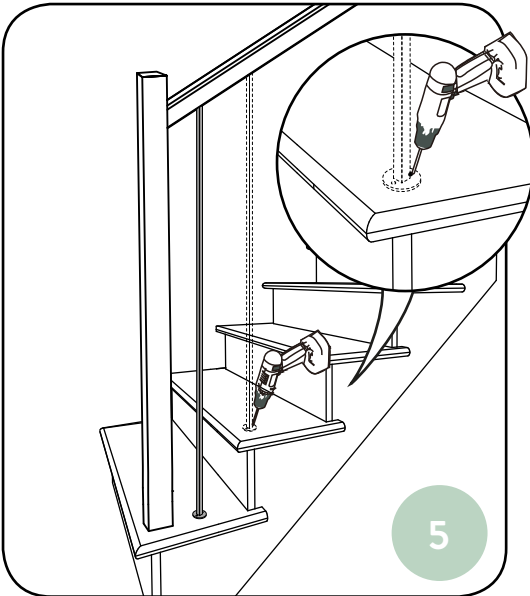
Drill 1/16" pilot holes.



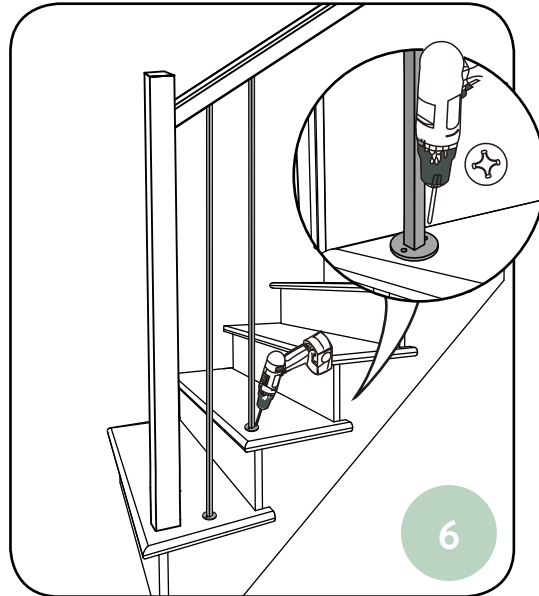
Fix the baluster's head to the handrail.



Using a level, make sure the baluster is straight.



Drill 1/16" pilot holes.



Fix the baluster's base to the tread.

**DO NOT RETURN TO RETAILER**

If you have any questions, please contact our customer service at:  
[info@colonialelegance.com](mailto:info@colonialelegance.com) or call toll free at: 1-800-361-2030

**VISIT OUR WEB SITE**

[www.colonialelegance.com](http://www.colonialelegance.com)

**\*1 year limited warranty**