

Report No.: 18360RC30015501

# Test Report

**Client Name** : **Anker Innovations Limited**

---

**Client Address** : **Room1318-19,HollywoodPlaza,610NathanRoad,  
Mongkok,Kowloon,Hongkong**

---

**Product Name** : **Anker SOLIX F3800 Portable Power Station**

---

**Report Date** : **2024.04.08**

---



**Shenzhen Anbotech Compliance Laboratory Limited**

**Shenzhen Anbotech Compliance Laboratory Limited**

Address: East of 4/F., Building A, Hourui No.3 Industrial Zone, Xixiang Street, Bao'an District, Shenzhen, Guangdong, China  
Tel: (86) 0755-26066126 Fax: (86) 0755-26066021 Email: service@anbotech.com



Hotline  
400-003-0500  
www.anbotech.com.cn



# Test Report

Report No.: 18360RC30015501

Page 1 of 13

**Applicant** : Anker Innovations Limited  
**Address** : Room1318-19,HollywoodPlaza,610NathanRoad,Mongkok,Kowloon,  
Hongkong  
**The submitted sample and sample information was/were submitted and identified by/on the behalf of the client**  
**Sample name** : Anker SOLIX F3800 Portable Power Station  
**Test Model No.** : A1790  
**Trade Mark** : Anker  
**Sample received date** : 2023.09.05; 2023.12.15; 2024.03.15  
**Testing period** : 2023.09.05~2024.03.20

**Executive Summary:**

Test Request	Conclusion
California Proposition 65 Settlements:	
- Total Lead content	PASS
- Total Cadmium content	PASS
- Phthalates content	PASS

**Test Result(s):** Please refer to the following page(s).

Edited by XUPengQi Reviewed by Rosy Zhao Authorized Signatory Jianhui



# Test Report

Report No.: 18360RC30015501

Page 2 of 13

**Tested Sample/Part Description:**

- 1-1 Silvery metal insert plate
- 1-2 Copper-colored metal sheet
- 1-3 Silvery metal socket
- 2# Black rubber sheet + black rubber sheet + dark grey rubber sheet mixed
- 3# Black plastic socket + yellow plastic socket + black plastic socket mixed
- 4# Black plastic sheet + black plastic sheet + black plastic socket mixed
- 5# Blue inner plastic + transparent plastic sheet + black plastic button mixed
- 6# Grey plastic shell + dark grey plastic block + black plastic sheet mixed
- 7# Black plastic block + dark grey plastic sheet + dark grey plastic button mixed
- 8# Black plastic ring + black plastic button + dark grey plastic sheet mixed
- 9 Metal rod with silvery-grey oxide layer
- 10# Black plastic sheet + blue plastic button + black plastic handle mixed
- 11# Black rubber wheel + black rubber wheel + black rubber block mixed
- 12# Metal bracket with black plating + silvery metal rivet + metal rod with black oxide layer mixed
- 13# Silvery-grey coating + silvery coating mixed
- 14# Black plastic block + black plastic sheet + black plastic sheet mixed

**Test Result(s):****◆ Total Lead content**

With reference to California proposition 65 settlements, method(s) CPSC-CH- E1001-08.3/ CPSC-CH-E1002-08.3/ CPSC-CH-E1003-09.1 were used and total Lead content was determined by ICP-OES.

**Lead content in other materials:**

Tested Item	Result Unit (mg/kg)			MDL Unit (mg/kg)	Reference Limit Unit (mg/kg)
	1-1	1-2	1-3		
Total Lead (Pb)	35	71	76	2	100

Tested Item	Result Unit (mg/kg)			MDL Unit (mg/kg)	Reference Limit Unit (mg/kg)
	2#	3#	4#		
Total Lead (Pb)	7	N.D.	6	2	100





# Test Report

Report No.: 18360RC30015501

Page 3 of 13

Tested Item	Result Unit (mg/kg)			MDL Unit (mg/kg)	Reference Limit Unit (mg/kg)
	5#	6#	7#		
Total Lead (Pb)	3	N.D.	N.D.	2	100

Tested Item	Result Unit (mg/kg)			MDL Unit (mg/kg)	Reference Limit Unit (mg/kg)
	8#	9	10#		
Total Lead (Pb)	N.D.	N.D.	N.D.	2	100

Tested Item	Result Unit (mg/kg)			MDL Unit (mg/kg)	Reference Limit Unit (mg/kg)
	11#	12#	14#		
Total Lead (Pb)	N.D.	N.D.	N.D.	2	100

## Lead content in paints and surface-coating materials:

Tested Item	Result Unit (mg/kg)	MDL Unit (mg/kg)	Reference Limit Unit (mg/kg)
	13#		
Total Lead (Pb)	N.D.	2	90

## ◆ Total Cadmium content

With reference to California proposition 65 settlements, methods US EPA 3052:1996, US EPA 3050B:1996 were used and Total Cadmium(Cd) content was determined by ICP-OES.

Tested Item	Result Unit (mg/kg)			MDL Unit (mg/kg)	Reference Limit Unit (mg/kg)
	1-1	1-2	1-3		
Total Cadmium(Cd)	N.D.	N.D.	N.D.	2	300



# Test Report

Report No.: 18360RC30015501

Page 4 of 13

Tested Item	Result Unit (mg/kg)			MDL Unit (mg/kg)	Reference Limit Unit (mg/kg)
	2#	3#	4#		
Total Cadmium(Cd)	N.D.	N.D.	N.D.	2	300

Tested Item	Result Unit (mg/kg)			MDL Unit (mg/kg)	Reference Limit Unit (mg/kg)
	5#	6#	7#		
Total Cadmium(Cd)	N.D.	N.D.	N.D.	2	300

Tested Item	Result Unit (mg/kg)			MDL Unit (mg/kg)	Reference Limit Unit (mg/kg)
	8#	9	10#		
Total Cadmium(Cd)	N.D.	N.D.	N.D.	2	300

Tested Item	Result Unit (mg/kg)			MDL Unit (mg/kg)	Reference Limit Unit (mg/kg)
	11#	12#	13#		
Total Cadmium(Cd)	N.D.	N.D.	N.D.	2	300

Tested Item	Result Unit (mg/kg)	MDL Unit (mg/kg)	Reference Limit Unit (mg/kg)
	14#		
Total Cadmium(Cd)	N.D.	2	300



# Test Report

Report No.: 18360RC30015501

Page 5 of 13

## ◆ Phthalates content

With reference to California Proposition 65 settlements, method CPSC-CH-C1001-09.4 was used and phthalates were determined by gas chromatograph with mass spectrometer (GC-MS).

Tested Item(s)	Result %			MDL %	Reference limit %
	2#	3#	4#		
<b>Phthalates</b>					
Di-2-ethylhexyl Phthalate (DEHP)	N.D.	N.D.	N.D.	0.0050	0.1
Dibutyl Phthalate (DBP)	N.D.	N.D.	N.D.	0.0050	0.1
Benzylbutyl Phthalate (BBP)	N.D.	N.D.	N.D.	0.0050	0.1
Diisononyl Phthalate (DINP)	N.D.	N.D.	N.D.	0.0050	0.1
Diisodecyl Phthalate (DIDP)	N.D.	N.D.	N.D.	0.0050	0.1
Di-n-hexyl Phthalate (DnHP)	N.D.	N.D.	N.D.	0.0050	0.1

Tested Item(s)	Result %			MDL %	Reference limit %
	5#	6#	7#		
<b>Phthalates</b>					
Di-2-ethylhexyl Phthalate (DEHP)	N.D.	N.D.	N.D.	0.0050	0.1
Dibutyl Phthalate (DBP)	N.D.	N.D.	N.D.	0.0050	0.1
Benzylbutyl Phthalate (BBP)	N.D.	N.D.	N.D.	0.0050	0.1
Diisononyl Phthalate (DINP)	N.D.	N.D.	N.D.	0.0050	0.1
Diisodecyl Phthalate (DIDP)	N.D.	N.D.	N.D.	0.0050	0.1
Di-n-hexyl Phthalate (DnHP)	N.D.	N.D.	N.D.	0.0050	0.1

Tested Item(s)	Result %			MDL %	Reference limit %
	8#	10#	11#		
<b>Phthalates</b>					
Di-2-ethylhexyl Phthalate (DEHP)	N.D.	N.D.	N.D.	0.0050	0.1
Dibutyl Phthalate (DBP)	N.D.	N.D.	N.D.	0.0050	0.1
Benzylbutyl Phthalate (BBP)	N.D.	N.D.	N.D.	0.0050	0.1
Diisononyl Phthalate (DINP)	N.D.	N.D.	N.D.	0.0050	0.1
Diisodecyl Phthalate (DIDP)	N.D.	N.D.	N.D.	0.0050	0.1
Di-n-hexyl Phthalate (DnHP)	N.D.	N.D.	N.D.	0.0050	0.1





# Test Report

Report No.: 18360RC30015501

Page 6 of 13

Tested Item(s)	Result %		MDL %	Reference limit %
	13#	14#		
<b>Phthalates</b>				
Di-2-ethylhexyl Phthalate (DEHP)	N.D.	N.D.	0.0050	0.1
Dibutyl Phthalate (DBP)	N.D.	N.D.	0.0050	0.1
Benzylbutyl Phthalate (BBP)	N.D.	N.D.	0.0050	0.1
Diisononyl Phthalate (DINP)	N.D.	N.D.	0.0050	0.1
Diisodecyl Phthalate (DIDP)	N.D.	N.D.	0.0050	0.1
Di-n-hexyl Phthalate (DnHP)	N.D.	N.D.	0.0050	0.1

**Note:**

-MDL = Method Detection Limit

-N.D. = Not Detected (<MDL)

-mg/kg = ppm = parts per million

-%= Percentage by weight

-#=As specified by client, the test was conducted by mixing several samples together. The result(s) shown on this report may be different from the content of any homogeneous material.

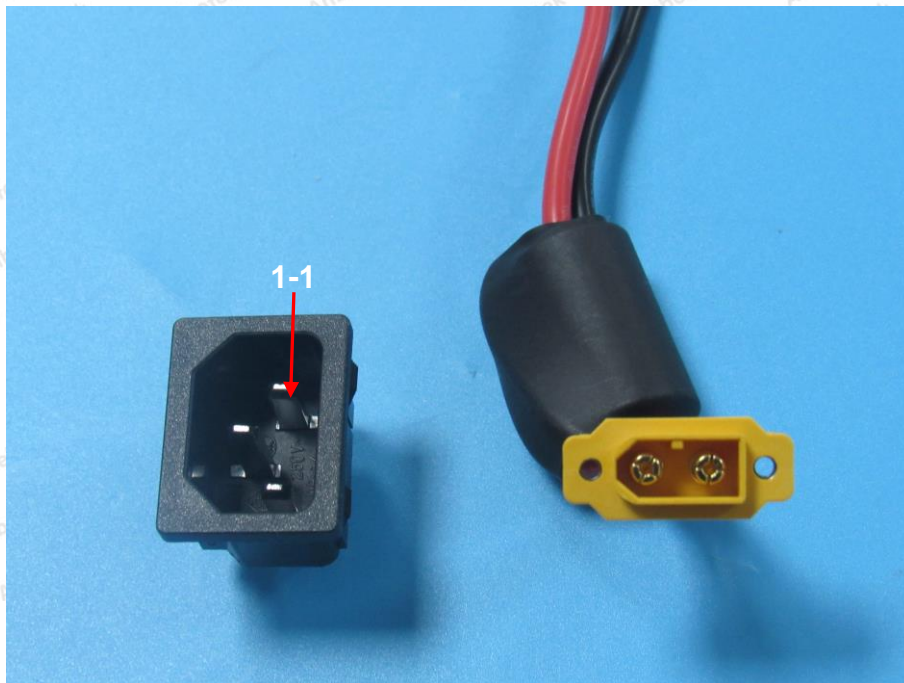


# Test Report

Report No.: 18360RC30015501

Page 7 of 13

## Photograph of Sample

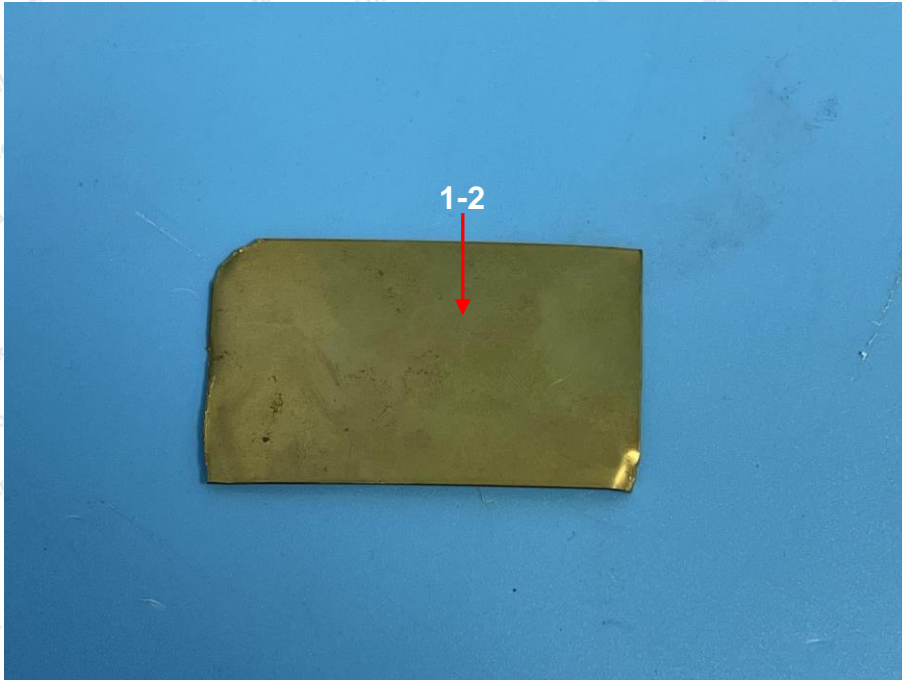




# Test Report

Report No.: 18360RC30015501

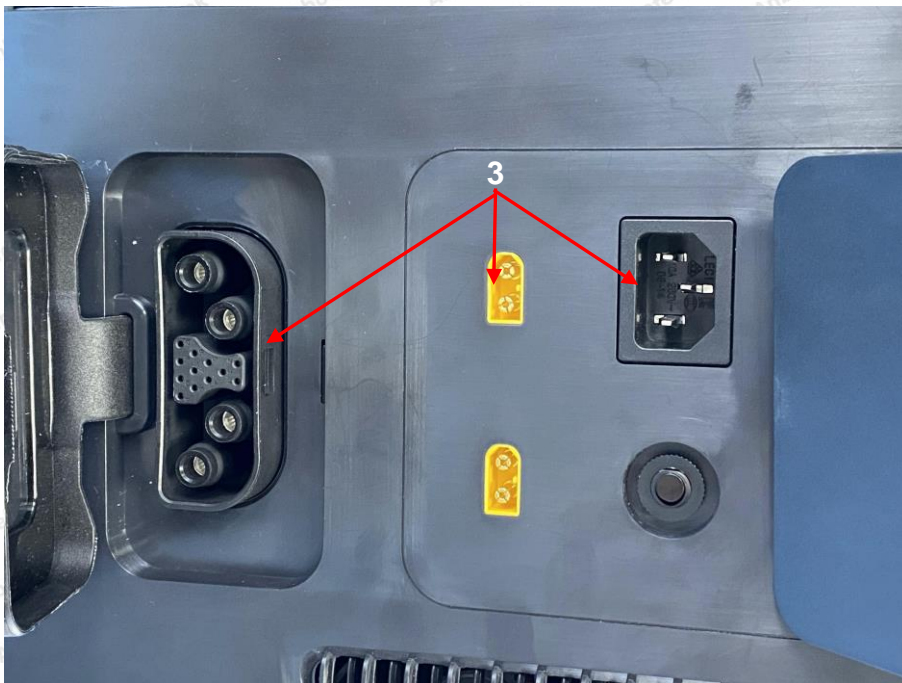
Page 8 of 13



# Test Report

Report No.: 18360RC30015501

Page 9 of 13

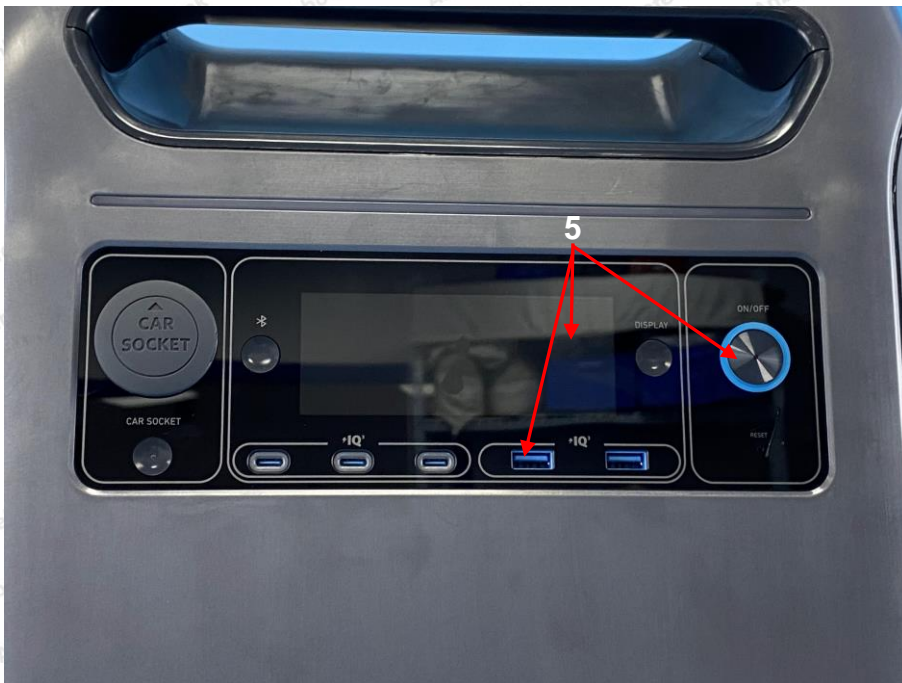




# Test Report

Report No.: 18360RC30015501

Page 10 of 13

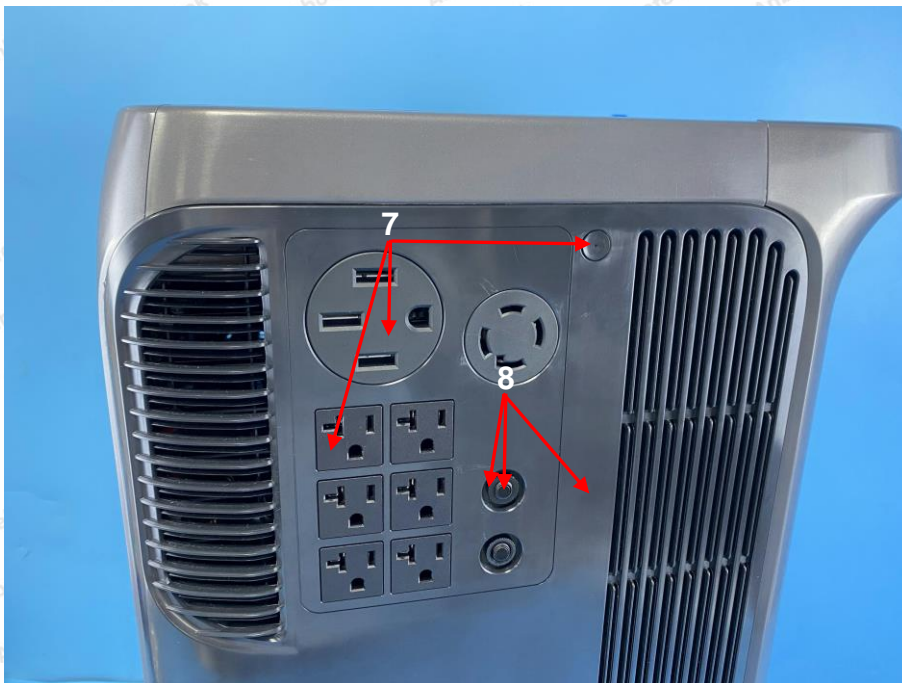




# Test Report

Report No.: 18360RC30015501

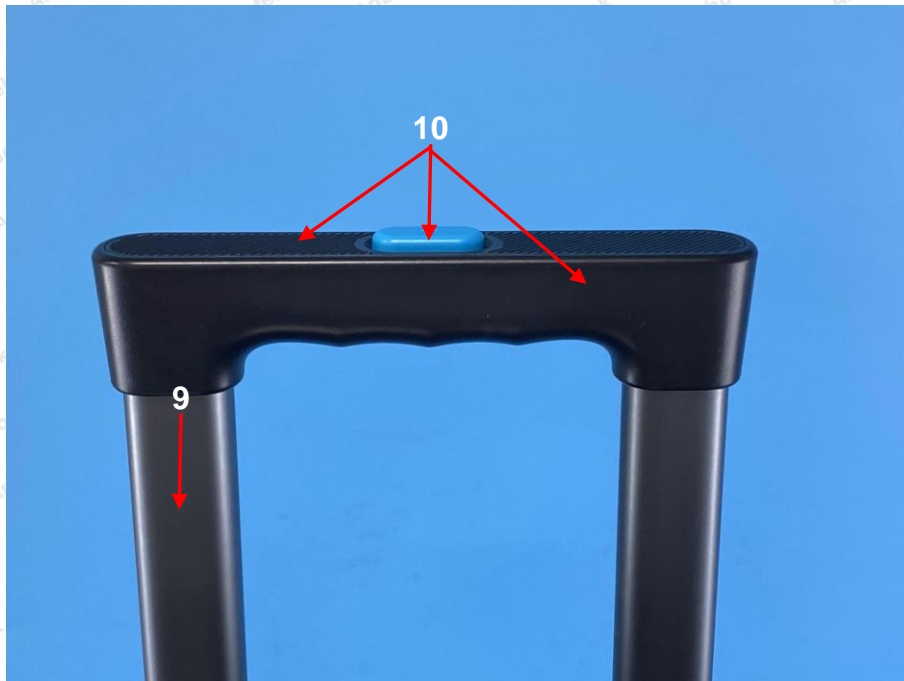
Page 11 of 13



# Test Report

Report No.: 18360RC30015501

Page 12 of 13

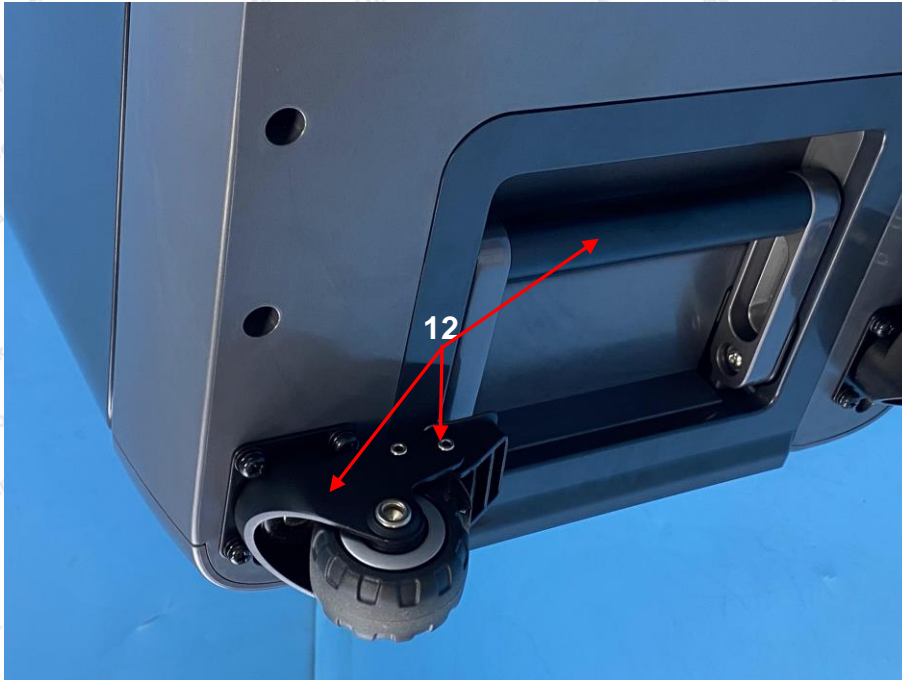




# Test Report

Report No.: 18360RC30015501

Page 13 of 13



\*\*\*\* End of Report \*\*\*\*

The test report is effective only with both signature and specialized stamp. The result(s) shown in this report refer only to the sample(s) tested. Without written approval of Anbotech, this report can't be reproduced except in full.

## Shenzhen Anbotech Compliance Laboratory Limited

Address: East of 4/F., Building A, Hourui No.3 Industrial Zone, Xixiang Street, Bao'an District, Shenzhen, Guangdong, China  
Tel: (86) 0755-26066126 Fax: (86) 0755-26066021 Email: service@anbotech.com

AB-RHS-03-b



Hotline  
400-003-0500  
www.anbotech.com.cn

