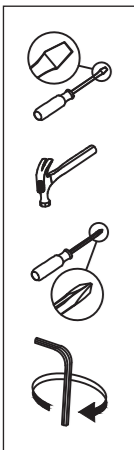


Contact Us!

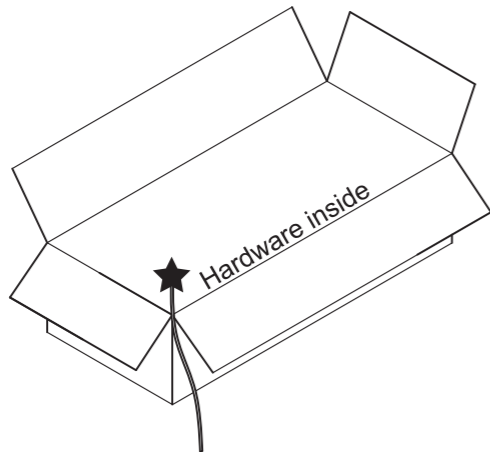
Do NOT return this item.

Contact our friendly customer service department for help first.

Before You Start

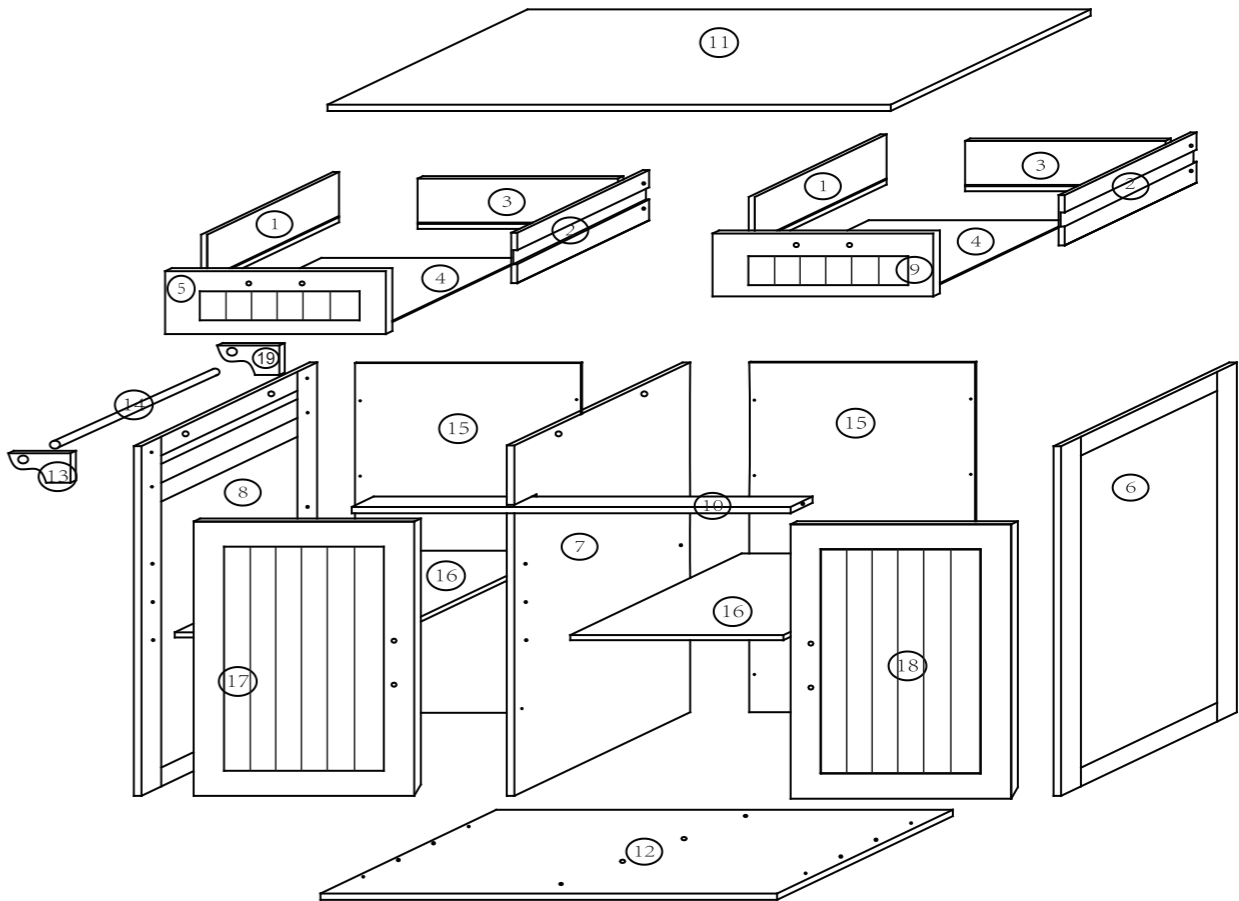


- Read each step carefully before starting. It is very important to ensure each step followed in correct order, otherwise assembly difficulties may occur.
- Most of board parts are labeled or stamped on the raw edges. Have a check to make sure all parts are included.
- Work in a spacious area, preferably on a carpet close to where the unit will be used.
- Keep the handtools close at hand. Do not use power tools to assemble your furniture. They may scratch or damage the parts.



Board Identification

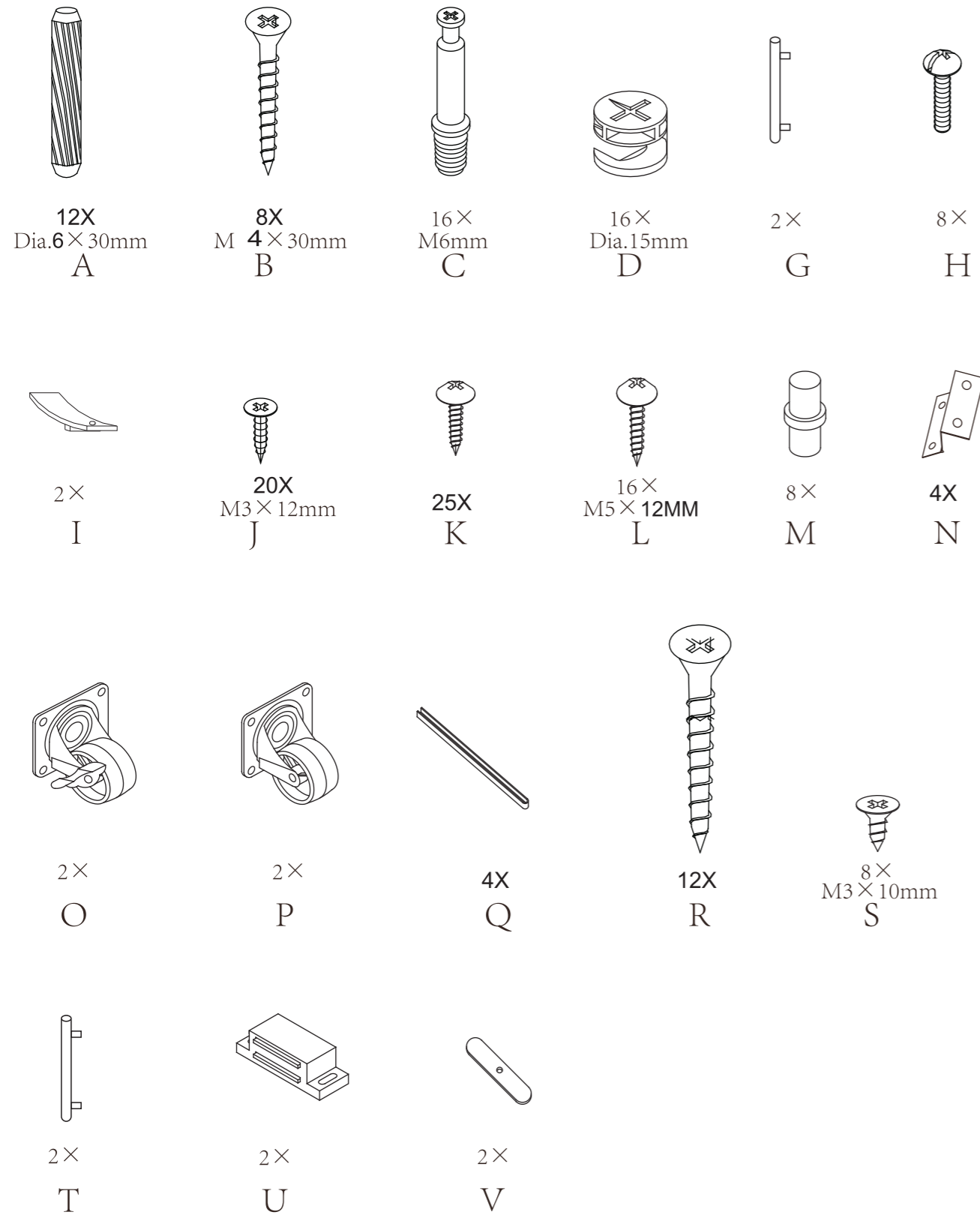
Not actual size



ITEM	DESCRIPTION	PART	QTY	ITEM	DESCRIPTION	PART	QTY
1	Drawer Side Panel(L)		2PCS	10	Cross bar		1PC
2	Drawer Side Panel(R)		2PCS	11	Top Panel		1PC
3	Drawer Back Panel		2PCS	12	Bottom Panel		1PC
4	Drawer Bottom Panel		2PCS	13	Tower Rack support (R)		1PCS
5	Drawer Front (L)		1PC	14	Tower Post		1PC
6	Right Panel		1PC	15	Back Panel		2PCS
7	Middle Panel		1PC	16	Adjustable shelf		2PCS
8	Left Panel		1PC	17	Left Door		1PC
9	Drawer Front (R)		1PC	18	Right Door		1PC
				19	Tower Rack support (L)		1PC

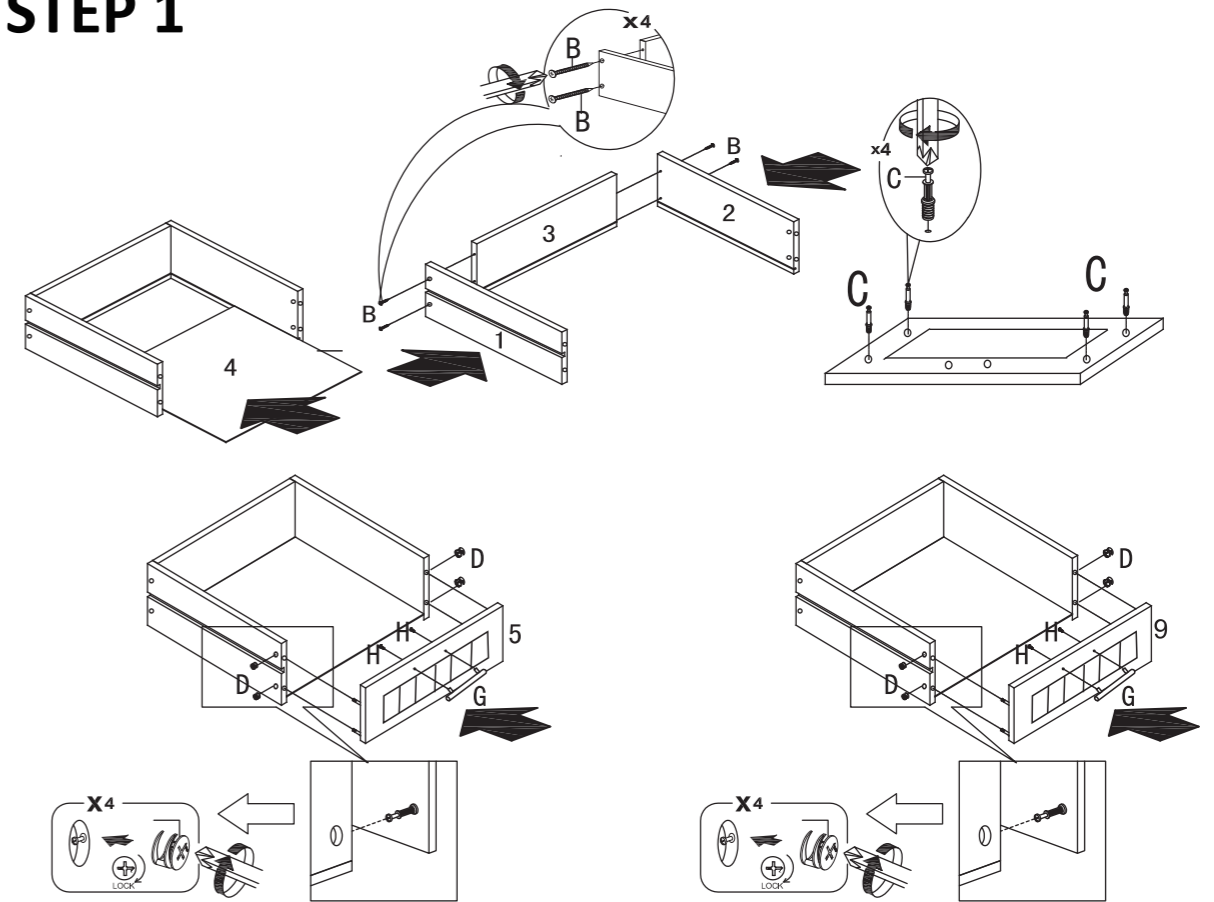
Hardware List

Actual size

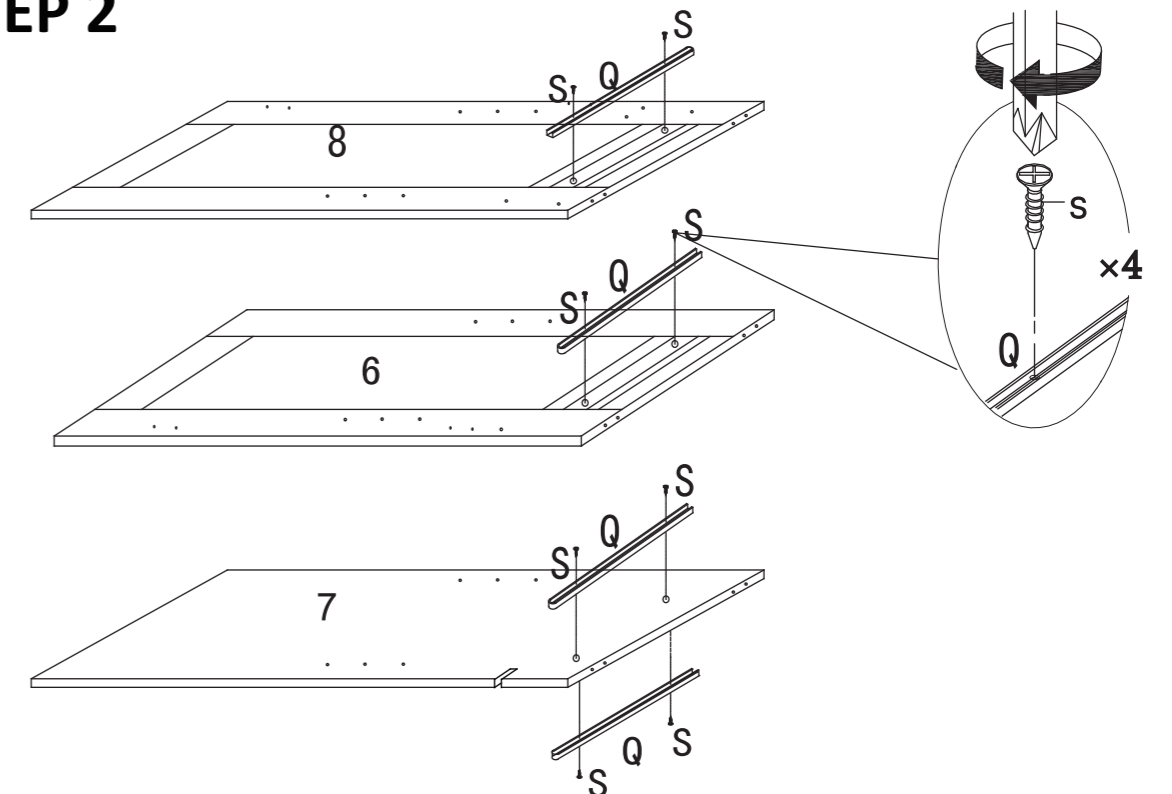


PRODUCT ASSEMBLY

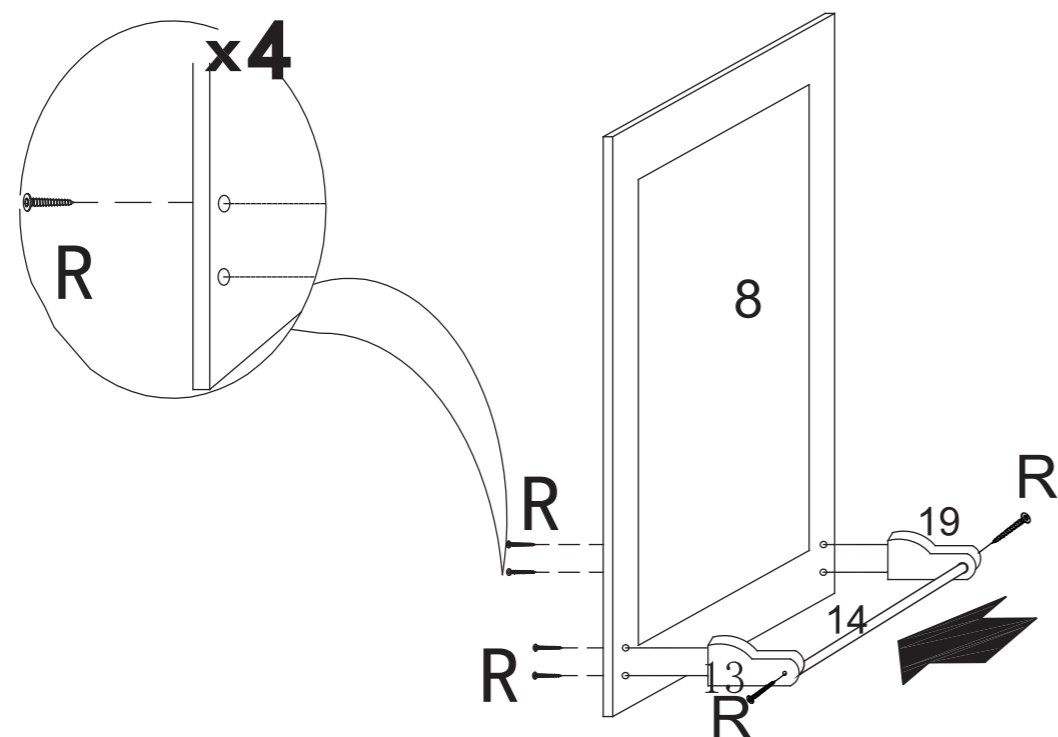
STEP 1



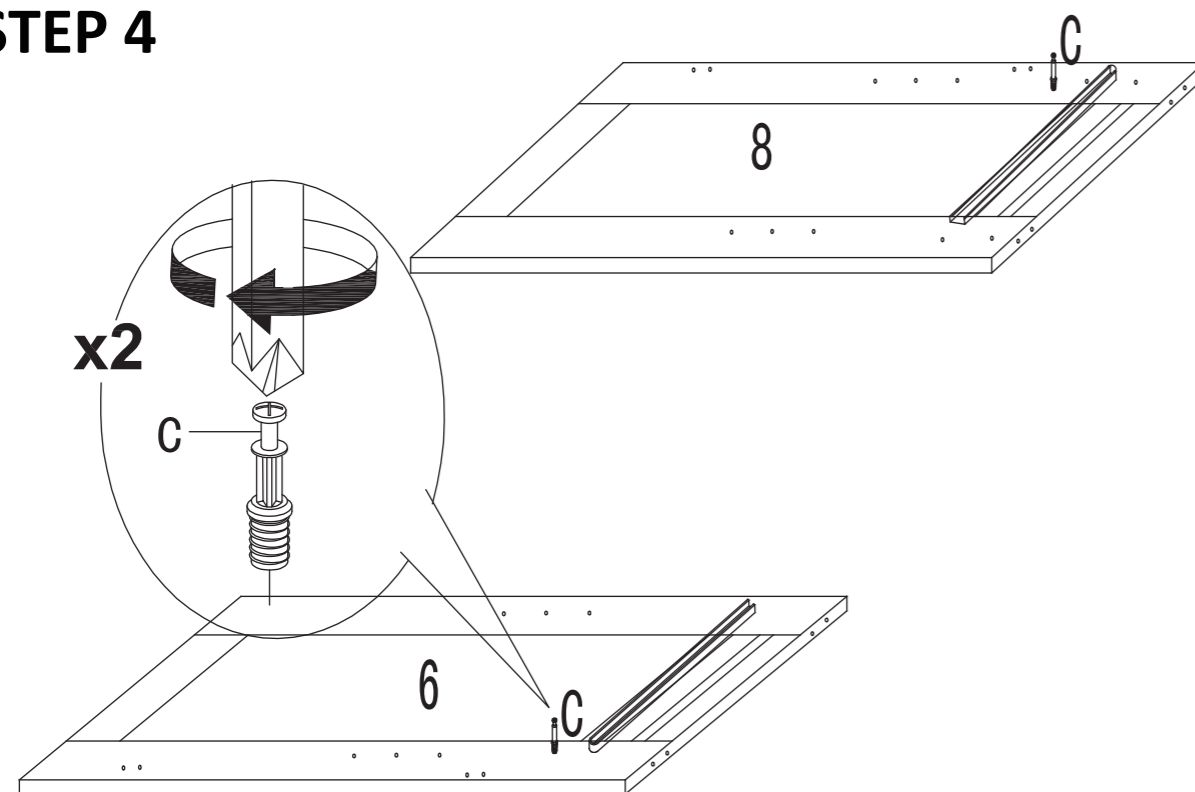
STEP 2



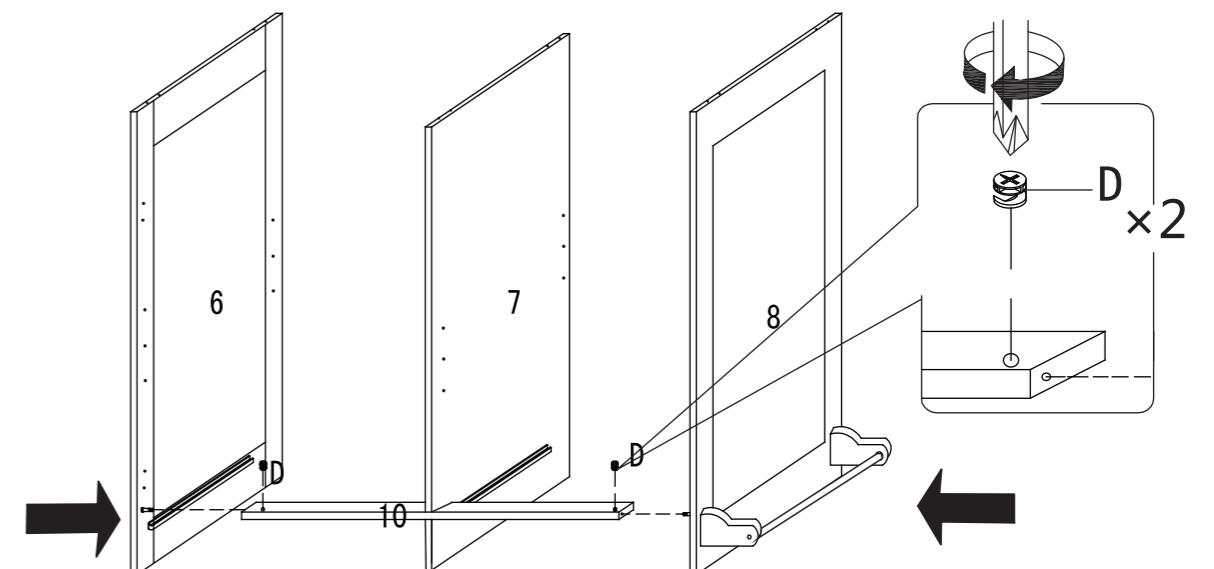
STEP 3



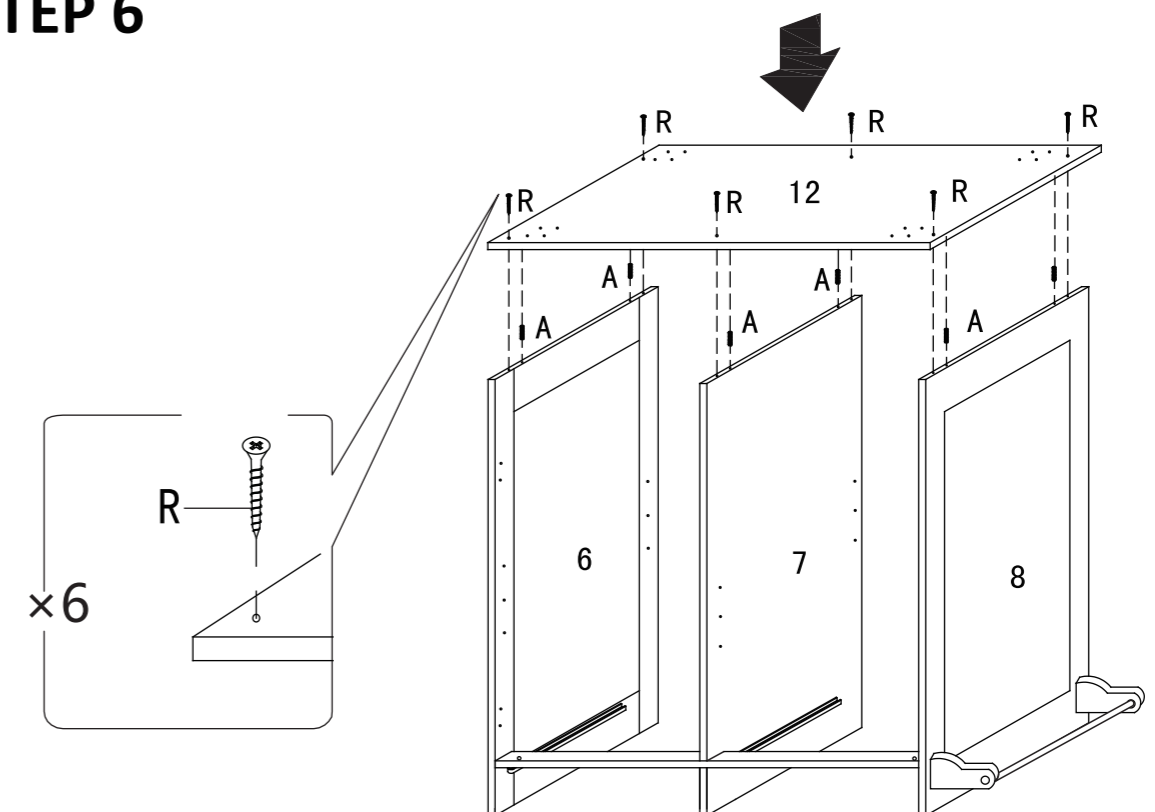
STEP 4



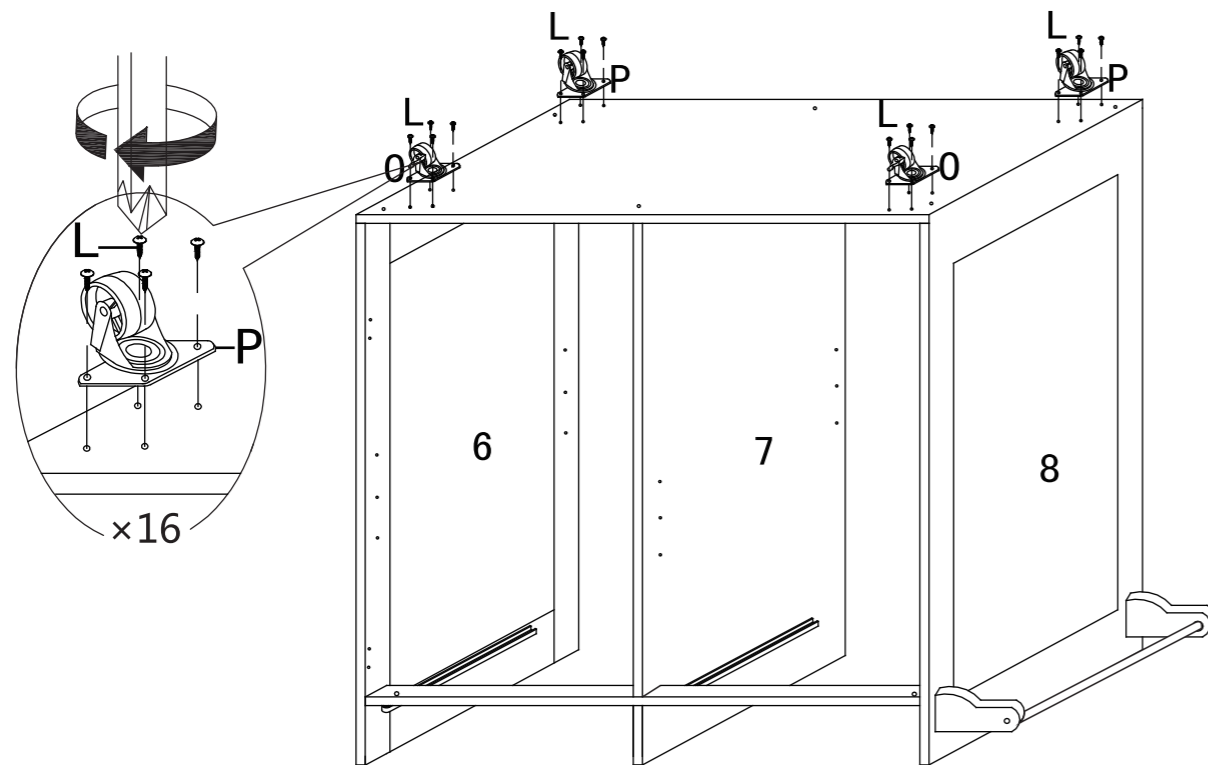
STEP 5



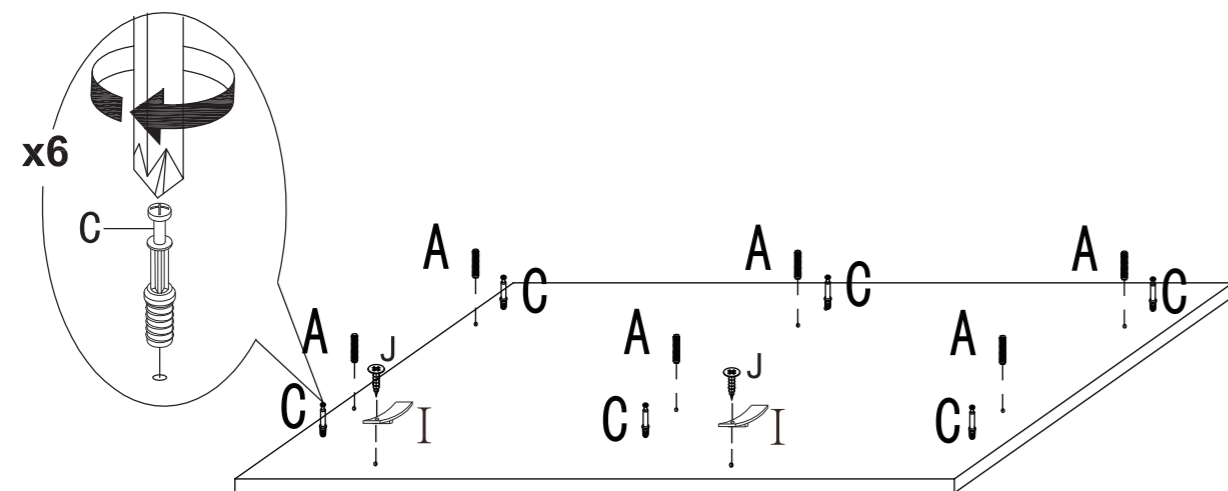
STEP 6



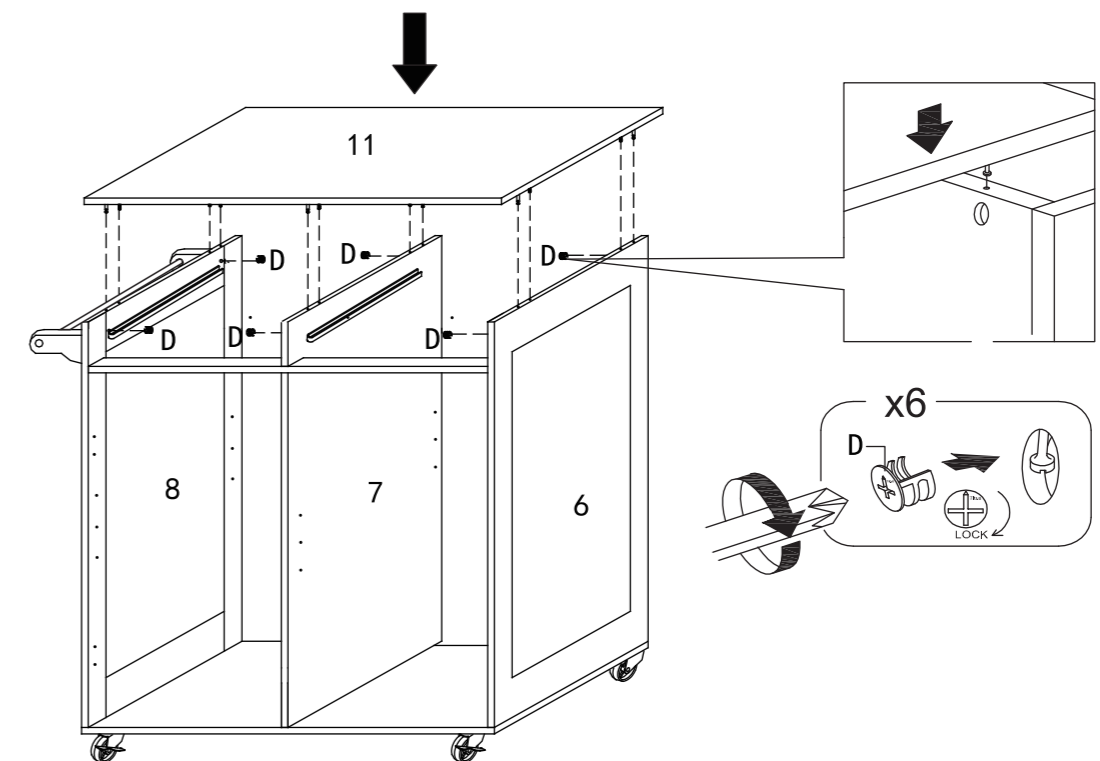
STEP 7



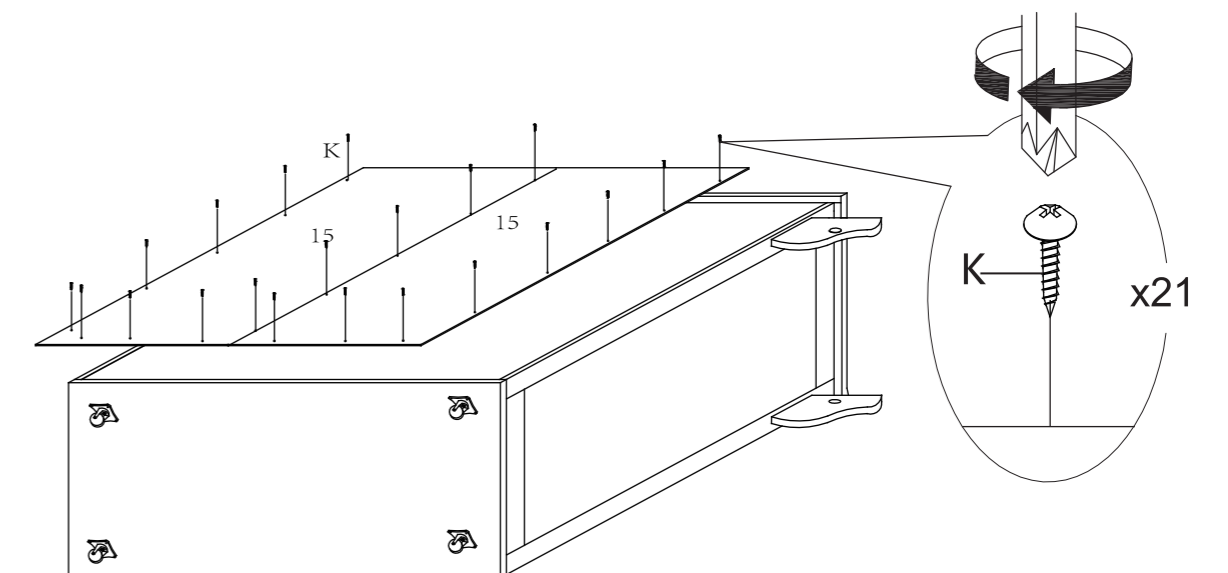
STEP 8



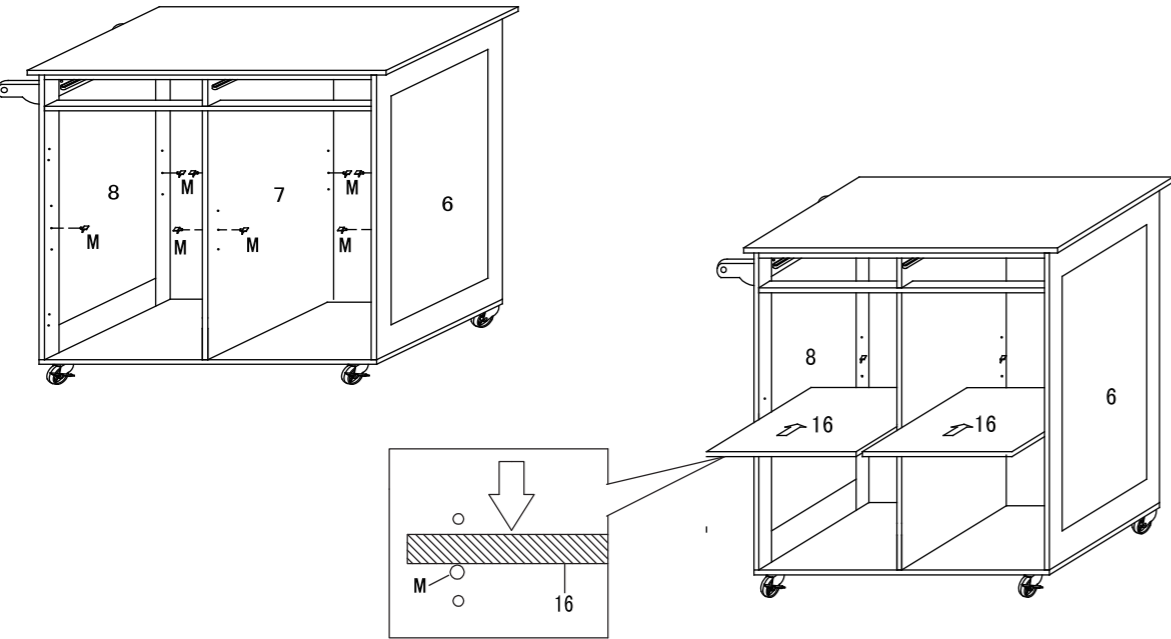
STEP 9



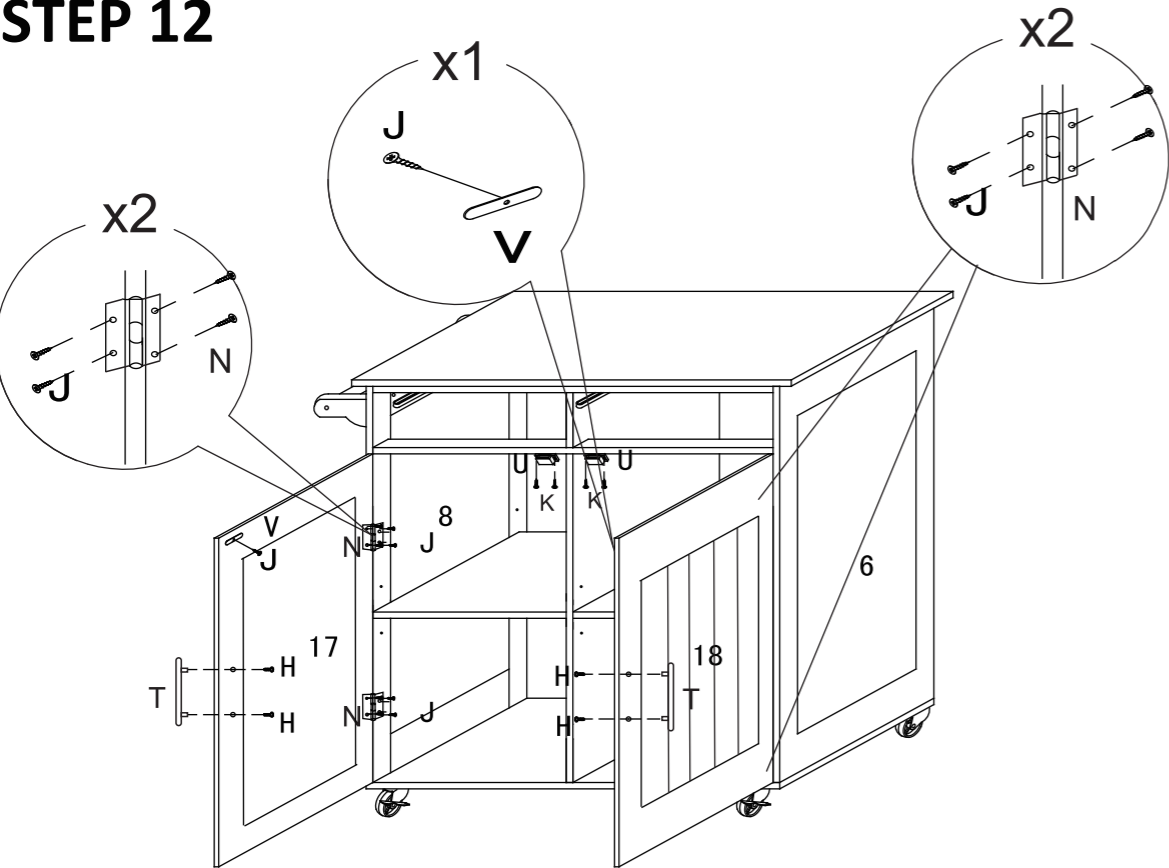
STEP 10



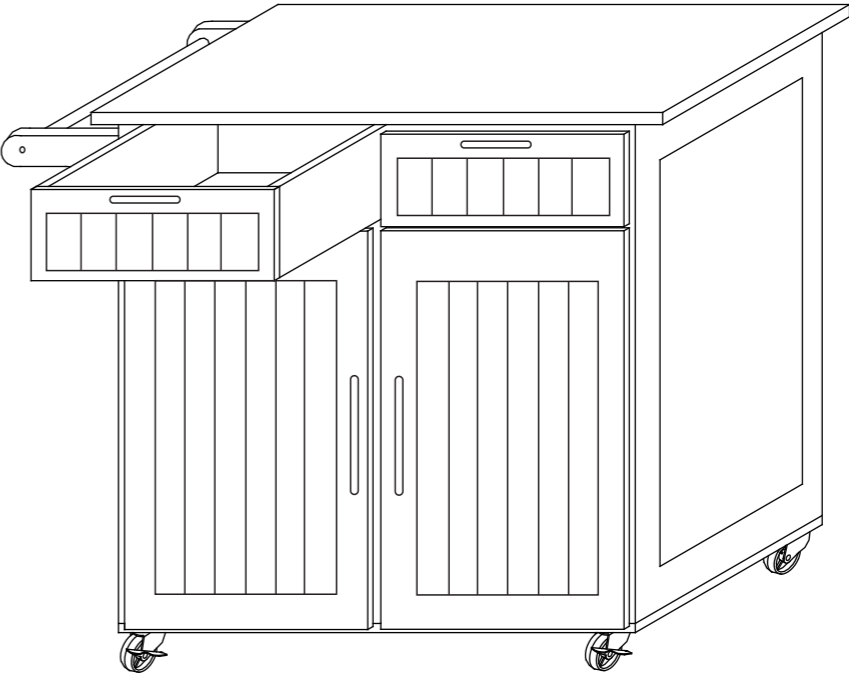
STEP 11



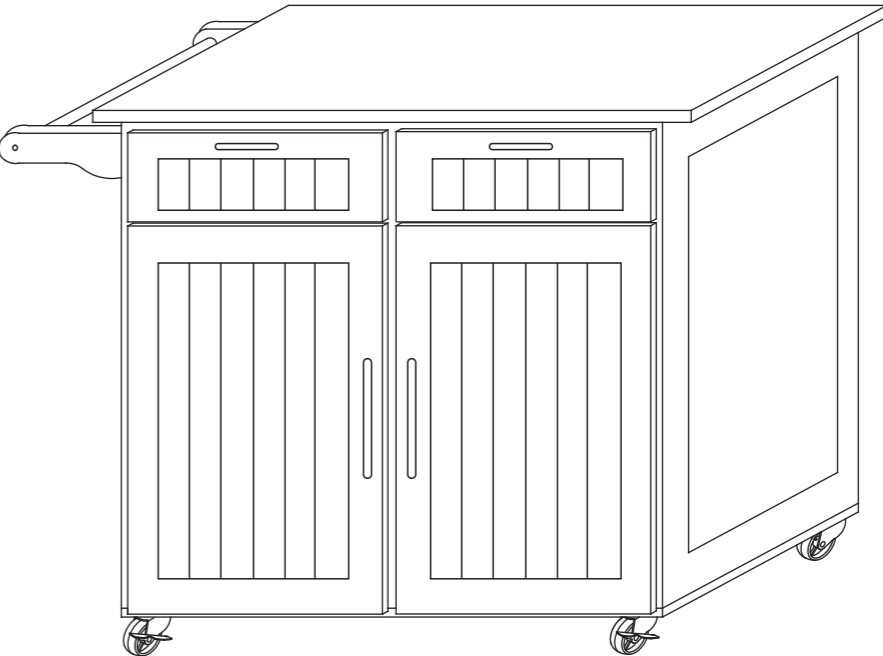
STEP 12



STEP 13



STEP 14



Care and Maintenance

Use a soft, clean cloth that will not scratch the surface when dusting.

Use of furniture polish is not necessary.

Should you choose to use polish, test first in an inconspicuous area.

Using solvents of any kind on your furniture may damage the finish.

Never use water to clean your furniture as it may cause damage to the finish.

Liquid spills should be removed immediately. Using a soft clean cloth, blot the spill gently. Avoid rubbing.

Check bolts/screws periodically and tighten them if necessary.

Further advice about wood furniture care

It is best to keep your furniture in a climate-controlled environment.

Extreme temperature and humidity changes can cause fading, warping, shrinking and splitting of wood.

It is advised to keep furniture away from direct sunlight as sun may damage the finish.

Proper care and cleaning at home will extend the life of your purchase. Following these important and helpful tips will enhance your furniture as it ages.

5 Star Rating



We would like to extend our heartfelt thanks to all of our customers for taking time to assemble this product and giving us valuable feedbacks.

