

User Manual

TOBBI



Scan ! To find more surprise!

Model Number: TH17M0471

TOBBI | 

You need

① 1 or 2 persons are needed

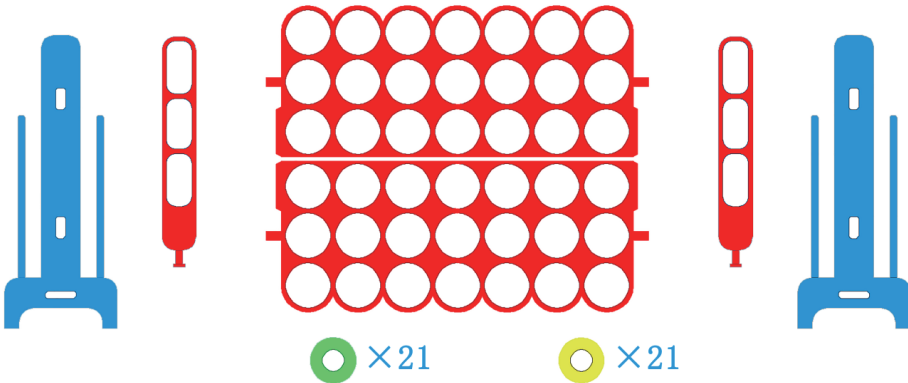


② Take 15 minutes



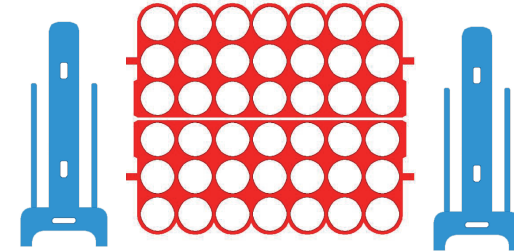
Technical Specifications	
Brand	TOBBI
Material	PE
Colour	red+green+blue+yellow
Size	1200X560X1085MM

Hardware List



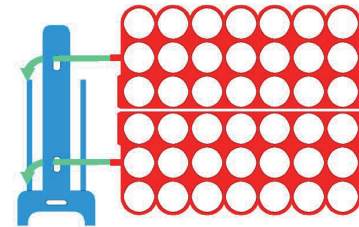
STEP 1

Take out main body from the carton and then hold the two parts together.



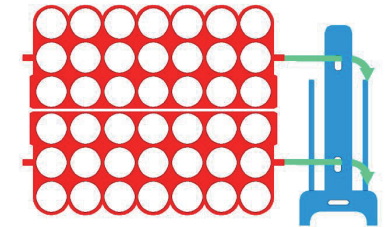
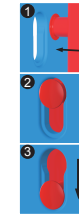
STEP 2

Connect one side by sliding into place.



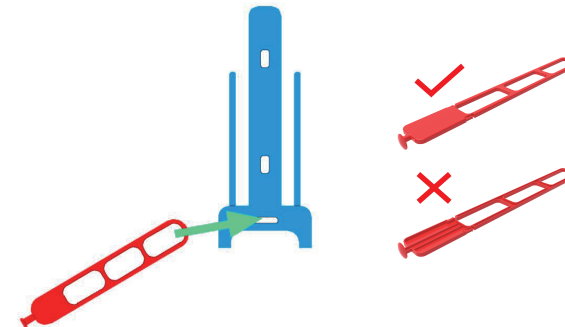
STEP 3

Flip over, repeat with other side.



STEP 4

Keep sliders face up, forcefully insert sliders at the bottom of the body until it clicks in place.



STEP 5

Put donuts on pegs.

