

SharkBite

Push-to-Connect x FIP

Water Heater Connector

Flexible water heater connectors allow you to work in tight spaces and easily connect water heaters with existing pipes that don't line up. Innovative design reduces the need for extra joints or fittings allowing for faster install time.

Features and Benefits

- Approved for electric and gas water heaters with flue vent.
- Compatible with PEX, copper, CPVC and PE-RT pipe.
- No special tools, crimping, glue or soldering is needed.
- Can be installed in wet lines.
- Can be rotated for easier and faster installation.
- Ideal for working in tight spaces.
- Remove using a Disconnect Clip or Disconnect Tongs (both sold separately).
- Push-to-Connect X FIP



Applications

- Potable water

Specification

The tube shall be inserted into the SharkBite PTC Fitting in the first stage through a release collar and then through a stainless-steel grab ring. The grab ring has teeth that open out and grip onto the tube. At the second stage the tube shall be pushed through an O-ring protector which aligns the pipe. A specially formulated EPDM O-ring shall be compressed between the wall of the fitting and the tube before the end of the tube reaches the tube stop. Only when the pipe has passed through the O-ring and reached the pipe stop shall a secure joint be created. The fitting shall be a SharkBite PTC Fitting.



Specification Data

Performance

Maximum working pressure	125 Service/200 Max PSI
Maximum Temperature	190°F

Materials

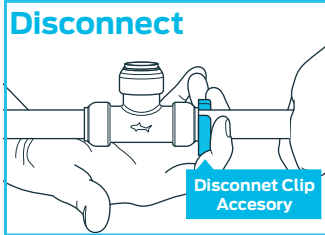
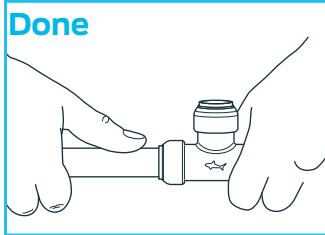
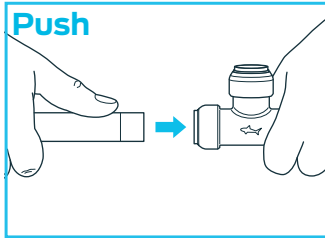
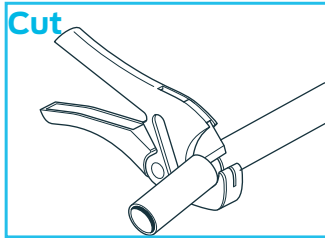
#SS3088FLEX18LF

1 Fitting	DZR Lead Free Brass ¹
2 Tube Liner	Polysulfone
3 O-ring	EPDM
4 Protection Ring	Glass Filled Nylon
5 Grab Ring	Stainless Steel
6 Demount Ring	POM
7 Cartridge Ring	POM
8 Corrugated hose	Stainless Steel
9 Swivel Nut	Chrome plated brass
10 Gasket	EPDM

¹ Lead Free for all models, surfaces that are in contact with consumable water contain less than 0.25% lead by weight.

Installation Requirements

1. Cut the desired length of pipe Square cut, perpendicular to the length of the pipe.
2. Deburr the end of copper or CPVC pipe to remove any sharp edges. Inspect fitting and pipe for damage, dirt, and debris.
3. Mark the pipe using the depth gauge tool.
4. Use the depth gauge opening that corresponds to the pipe outside diameter.
5. Push the pipe into the fitting.



Minimum Distance Between Fittings

1/2 in. spacing between ends of completed Connections

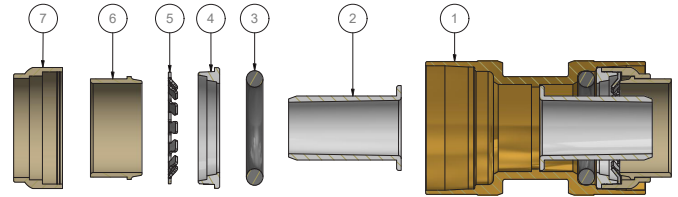
Codes and Standards

ASME A112.18.6
CSA B125.6
NSF/ANSI/CAN 61
NSF/ANSI/CAN 372

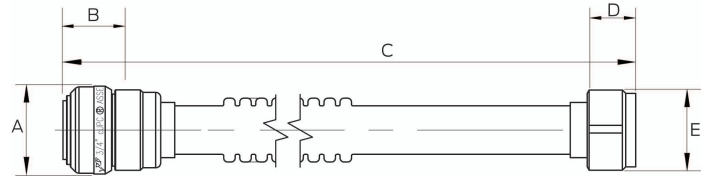


Pipe Type

Tubing: Hard drawn copper pipe Type K, L and M and annealed Type M not to exceed 3/8 nominal complying with ASTM B 88, PEX tubing complying with ASTM F 876 or CSA B137.5, or CVPC tubing complying with ASTM D 2846 or CSA B137.6, PE-RT complying with ASTM F2769 or CSA B137.18



Exploded View



SS3088FLEX12LF

Dimensions

Description	Part #	A	B	C	D	E
12-IN CS 3/4-IN SB X 3/4-IN FIP LINE	SS3088FX12LZ	1.27	1.17	12.50	0.37	1.31
18-IN CS 3/4-IN SB X 3/4-IN FIP LINE	SS3088FX18LZ	1.27	1.17	18.70	0.37	1.31
24-IN CS 3/4-IN SB X 3/4-IN FIP LINE	SS3088FX24LZ	1.27	1.17	24.02	0.37	1.31

Insertion Depth

Fitting Size	Nominal Pipe Size	Pipe OD	Insertion Depth(in)
3/4"	3/4 in. CTS	7/8 in.	1.10

Threaded Connectors

Do not use Teflon tape

Soldering

When soldering is required near a SharkBite Universal connection, make all solder joints first and then make the SharkBite connections.

Flame can cause the pipe to reach high temperatures and should not be used close to a SharkBite Universal fitting.

SharkBite Fitting Reuse

SharkBite Universal fittings are intended to be a permanent connection and are not designed for repeated connection and disconnection after the initial install.

If a fitting is installed incorrectly, it can be removed given that proper care is taken, as detailed in the following steps.

1. SharkBite disconnect tongs or SharkBite disconnect clips must be used when removing the fittings.
2. The fitting must be inspected by the installer and be free of damage and debris.
3. The initial pipe and the new pipe must be clean and free from scratches and burrs.
4. The insertion depth must be marked on the pipe.
5. The connection must be pressure tested and inspected by the installer to verify that there are no leaks.