



ORIGIN21 and logo design are trademarks or registered trademarks of LF, LLC.  
All rights reserved.

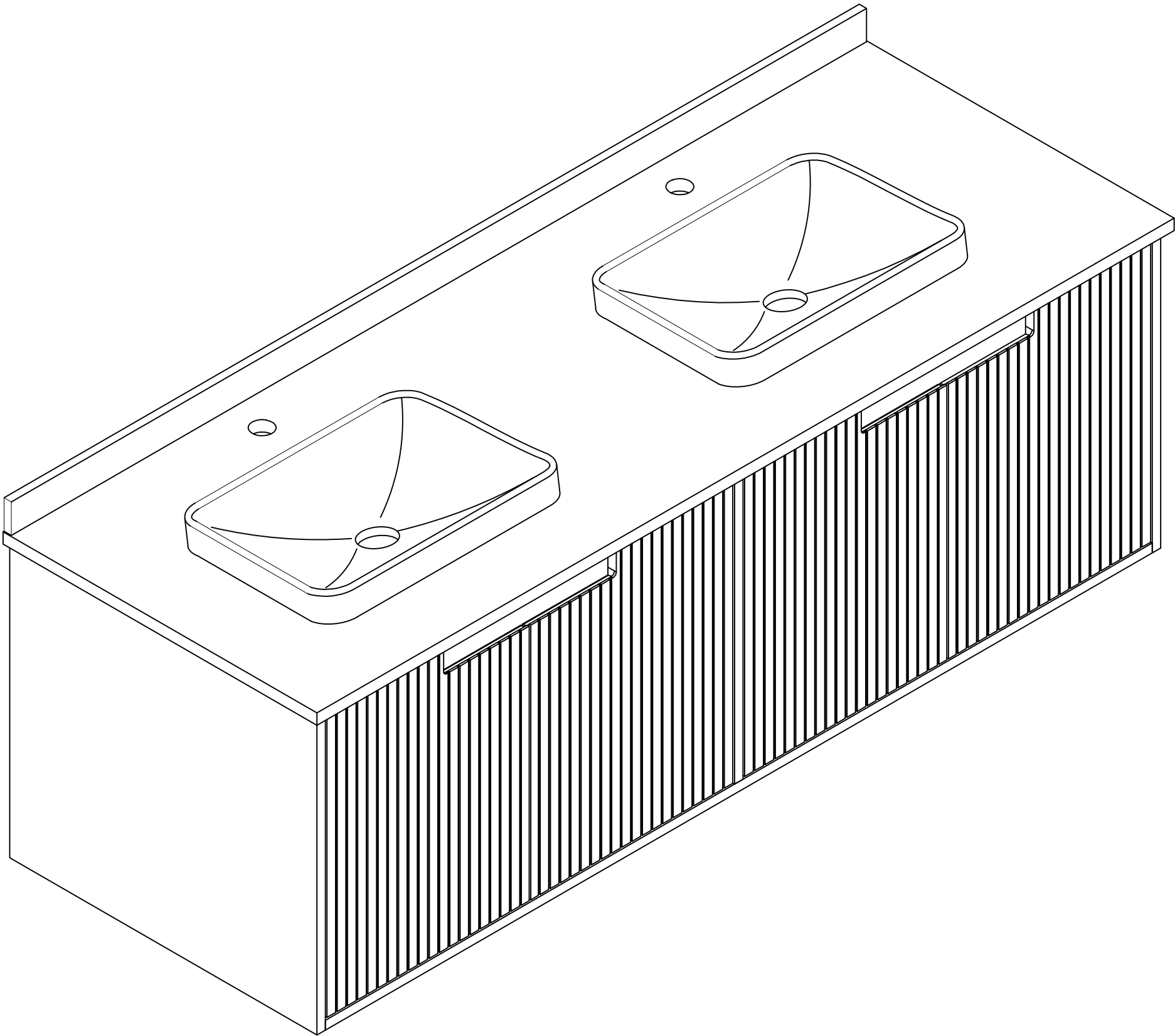
ITEM #5501914

#5530624

MODEL #TJ-0328V6022BLU

#TJ-0328V6022BR

**60" KELLEN VANITY  
WITH TOP**



**ATTACH YOUR RECEIPT HERE**

**Serial Number** \_\_\_\_\_

**Purchase Date** \_\_\_\_\_

Thank you for purchasing this ORIGIN21 product.  
Questions, problems, missing parts?  
Before returning, contact us on:  
888-251-1026, 8 a.m. - 8 p.m., EST, Monday-Sunday or [ascs@lowes.com](mailto:ascs@lowes.com).

# TABLE OF CONTENTS

---

Package Contents.....3

Hardware Contents.....3

Safety Instruction.....3

Preparation.....4

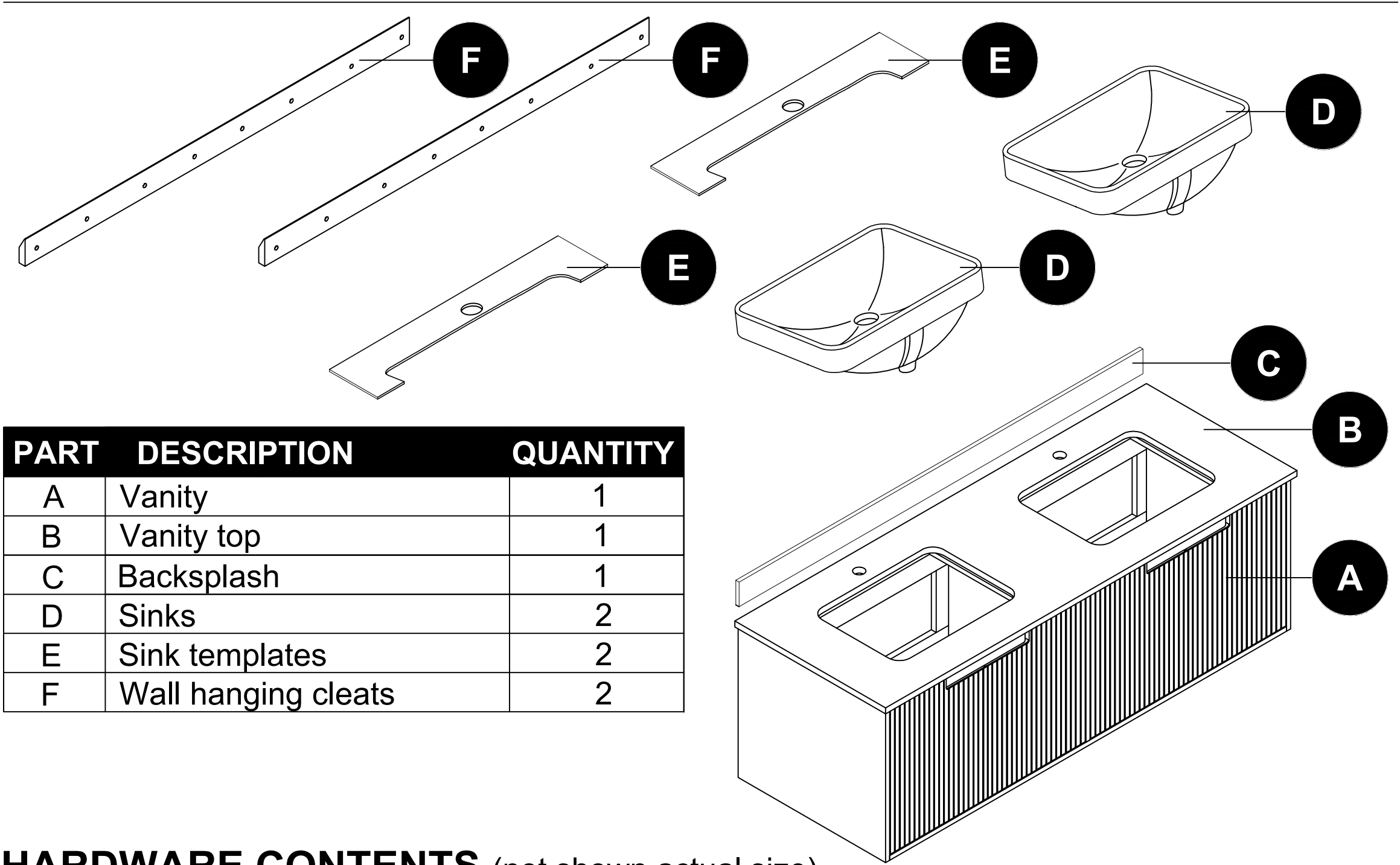
Assembly Instructions.....4

Care and Maintenance.....15

Warranty.....15

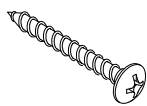
Replacement Parts List.....16

# PACKAGE CONTENTS



| PART | DESCRIPTION         | QUANTITY |
|------|---------------------|----------|
| A    | Vanity              | 1        |
| B    | Vanity top          | 1        |
| C    | Backsplash          | 1        |
| D    | Sinks               | 2        |
| E    | Sink templates      | 2        |
| F    | Wall hanging cleats | 2        |

# HARDWARE CONTENTS (not shown actual size)



Ø5x60 mm  
Screw

Qty. 16+2 extra

## ! SAFETY INSTRUCTION

Please read and understand this entire manual before attempting to assemble, operate or install the product.

## ! WARNING

- Unpacking requires two adults and several steps are more easily handled with two adults.

## CAUTION

- **DO NOT** try to pry off top from vanity, as damage to top or vanity may occur.
- Follow these instructions closely, take your time, and use care while assembling this vanity.

**KEEP THESE INSTRUCTIONS FOR FUTURE REFERENCE.**

## PREPARATION

Before beginning assembly of product, make sure all parts are present. Compare parts with package contents list and hardware contents list. If any part is missing or damaged, do not attempt to assemble the product.

**Estimated Installation Time:** 85 minutes (24 hours for silicone caulk to dry).

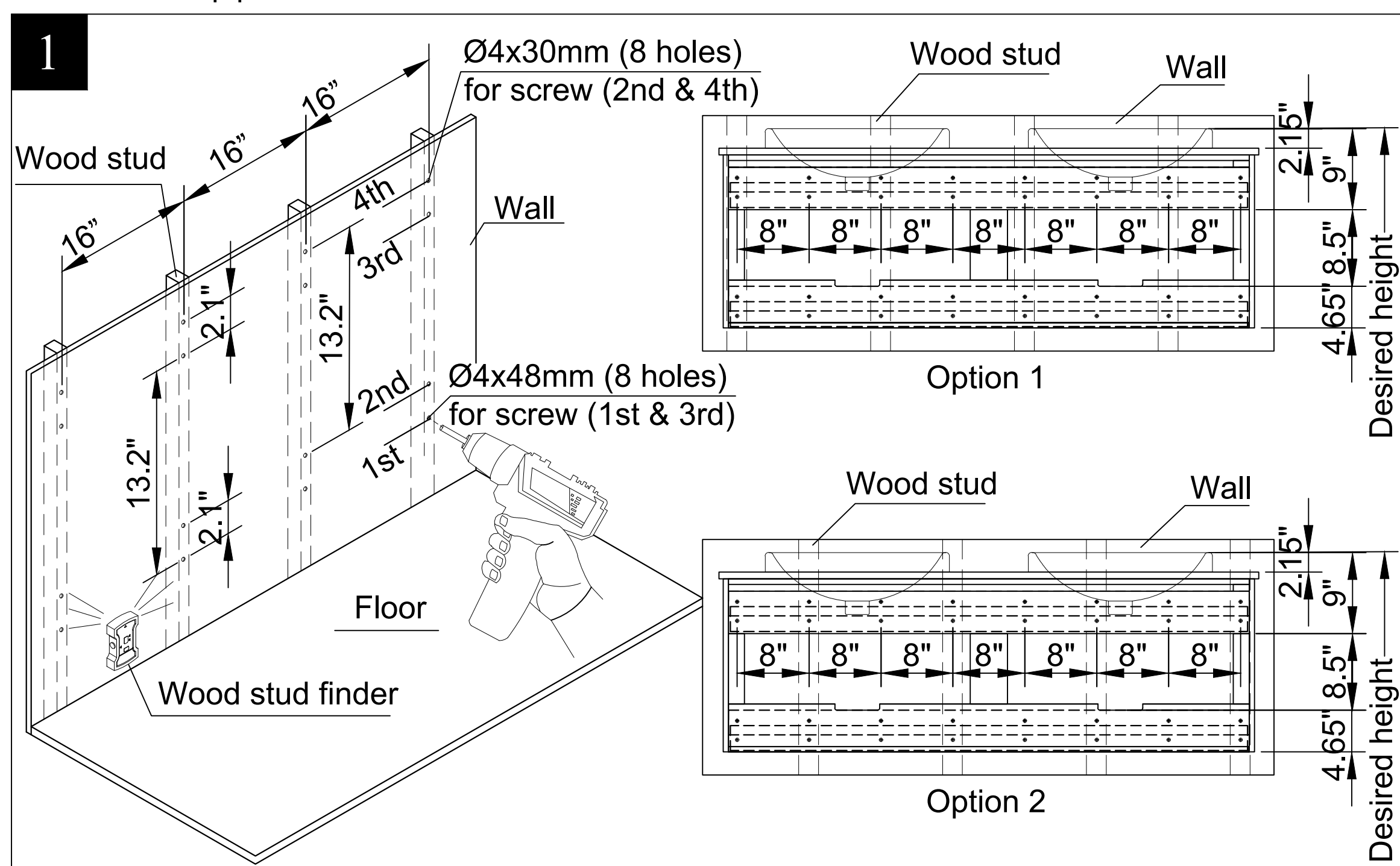
Tools Required for Assembly (not included): Wood stud finder, Phillips screwdriver, utility knife or scissors, silicone caulk, power drill with drill bit.

Helpful Tools (not included): Measuring tape, level.

## ASSEMBLY INSTRUCTIONS

## 1. Locate the wood studs and pre-drilling holes for screws

- Use a wood stud finder to locate the wood studs behind the walls.
- The vanity could be moved right and left as long as the wall hang cleat could be attached to wood studs
- Use a pencil to mark the installation location for the cleats (F) on wood studs only. Use a level to ensure the cleats (F) will be level before installing to the wall.
- Pre-drill Ø4x48mm deep holes for 1st and 3rd screw rows, and Ø4x30mm deep holes for 2nd and 4th screw rows.
- Note:
  - Pre-drill holes for screw on wood studs only. Don't need to screw with other holes of wall hanging cleats which not aligned to wood studs.
  - Make sure that the hangers and vanity back frame do not block any water sources and drain pipes.



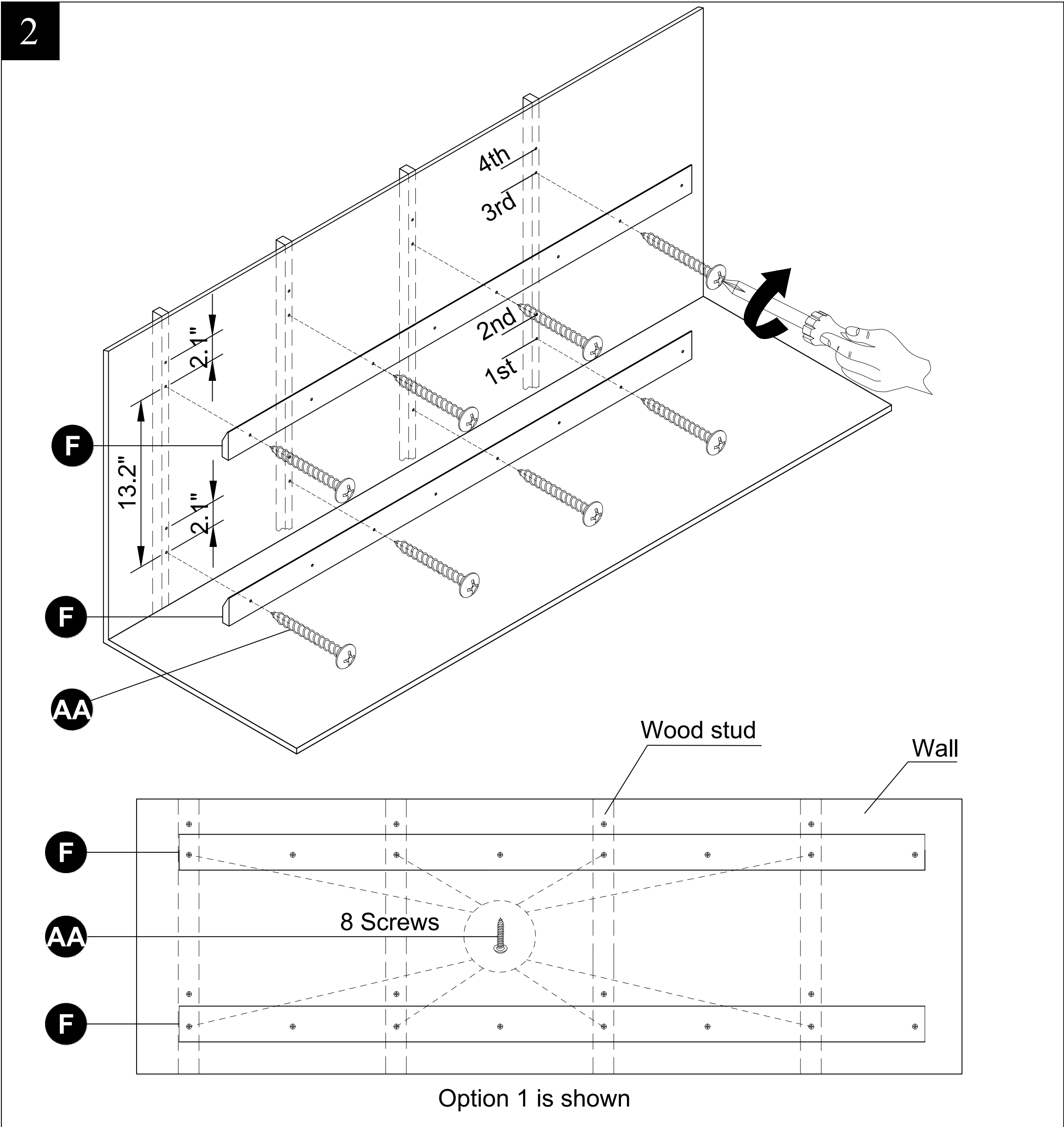
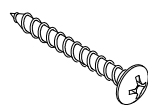
# ASSEMBLY INSTRUCTIONS

## 2. Installing the wall hanging cleats

- With the beveled edges facing up, attach the two wall hanging cleats (F) to the wall with the 1st and 3rd screw rows using the 8 screws (AA) provided. Use a level to ensure the cleats (F) is level.

### Hardware Used

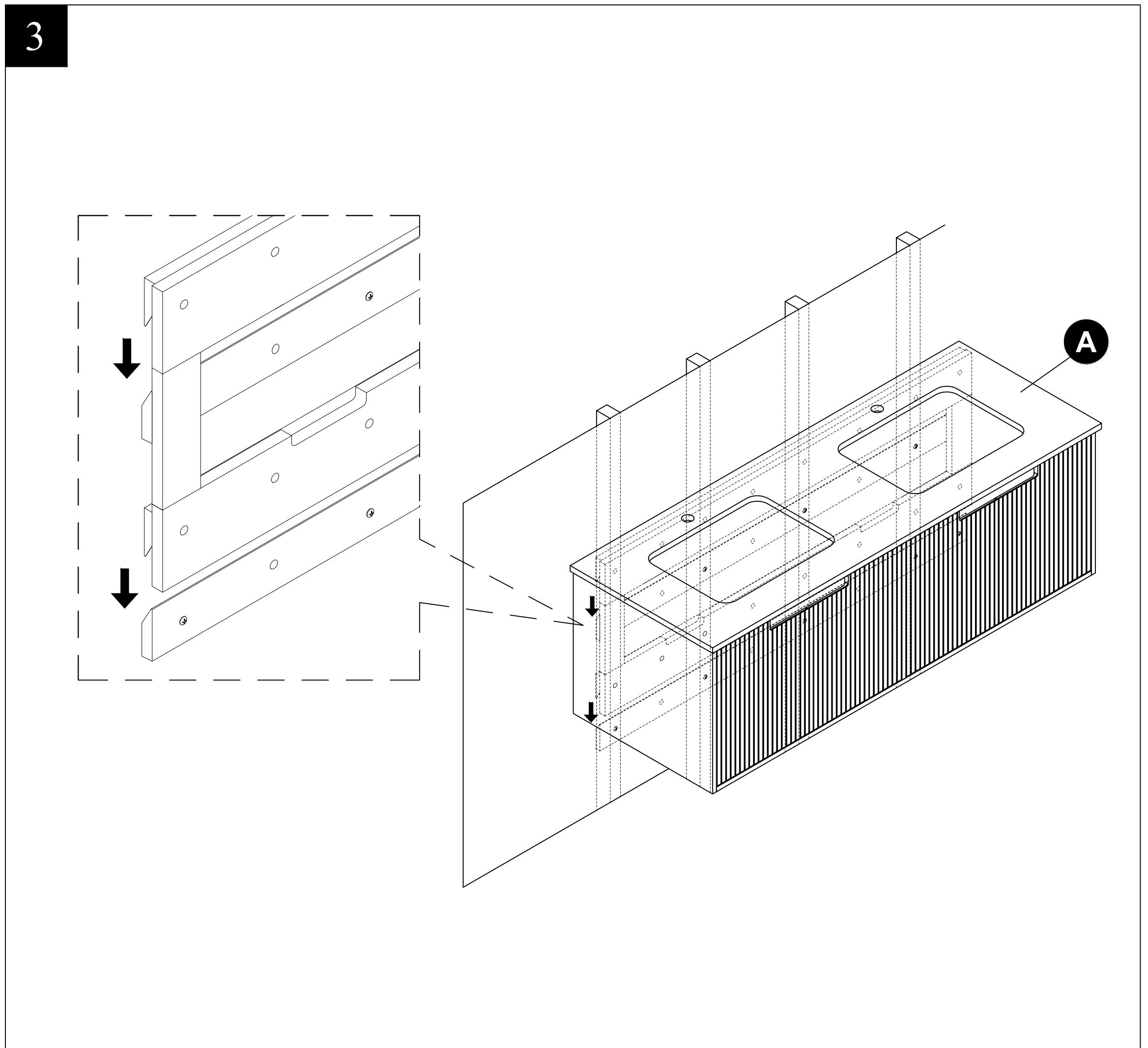
**AA** Ø5x60 mm      Screw      x8



# ASSEMBLY INSTRUCTIONS

## 3. Hanging the vanity

- With help from another person, carefully hang the vanity (A) onto the wall hanging cleats.



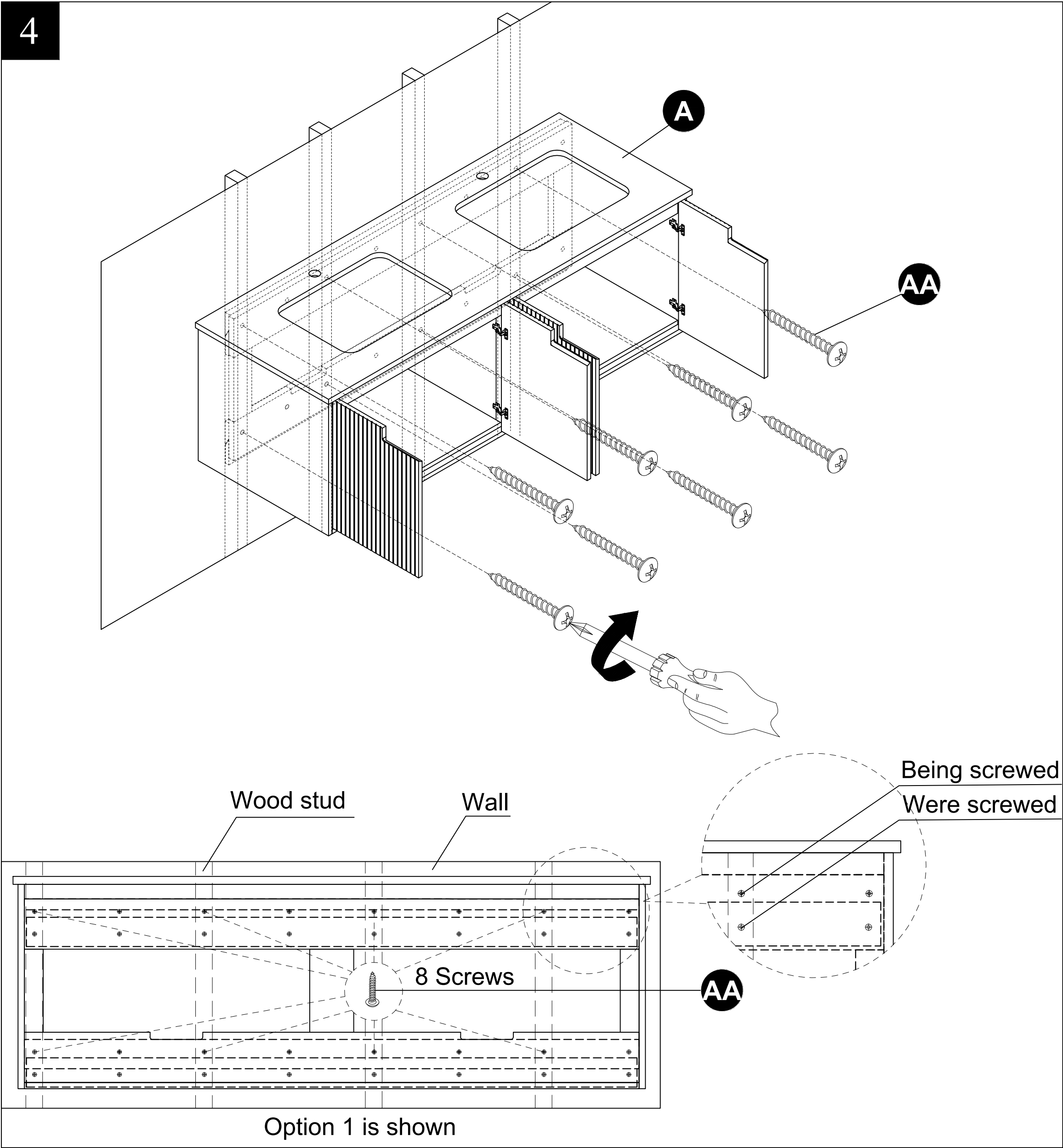
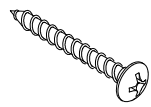
# ASSEMBLY INSTRUCTIONS

## 4. Reinforcing the vanity to the wall

- Open the doors.
- Use 8 screws (AA) provided to reinforce the vanity to the wall where the wood studs located.

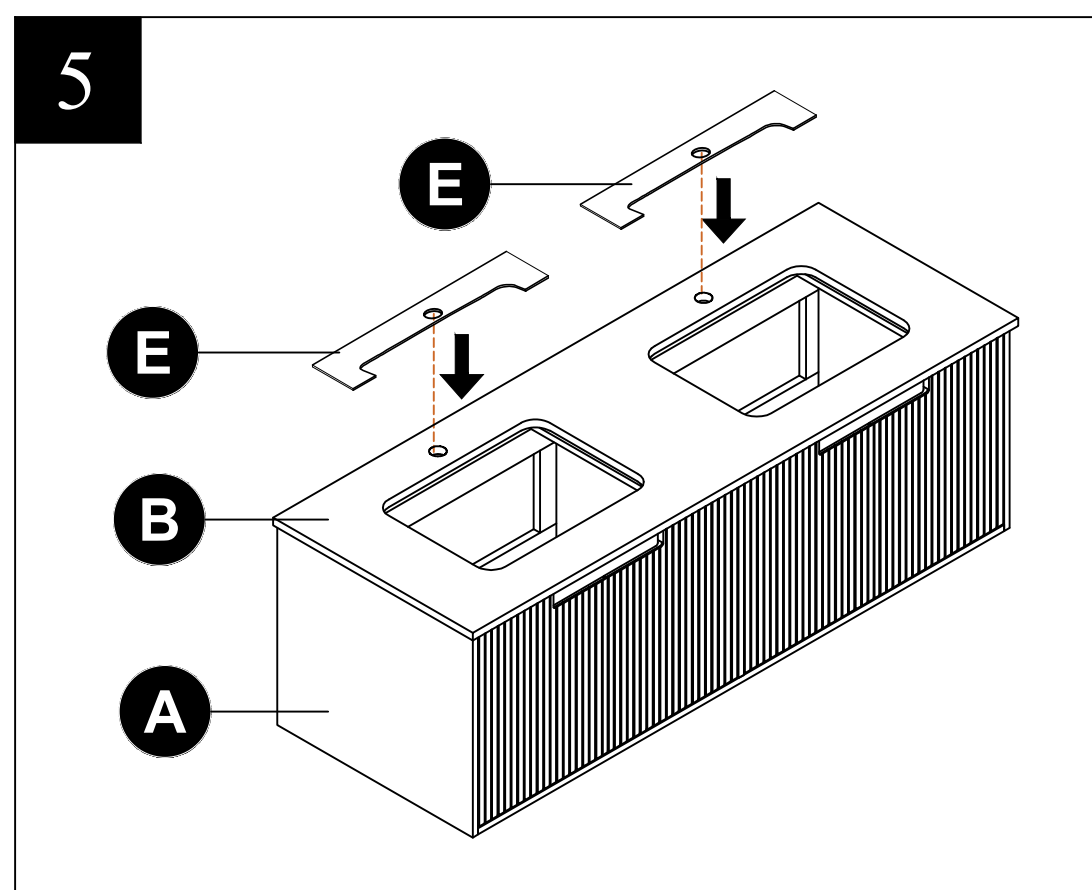
### Hardware Used

**AA** Ø5x60 mm      Screw      x8



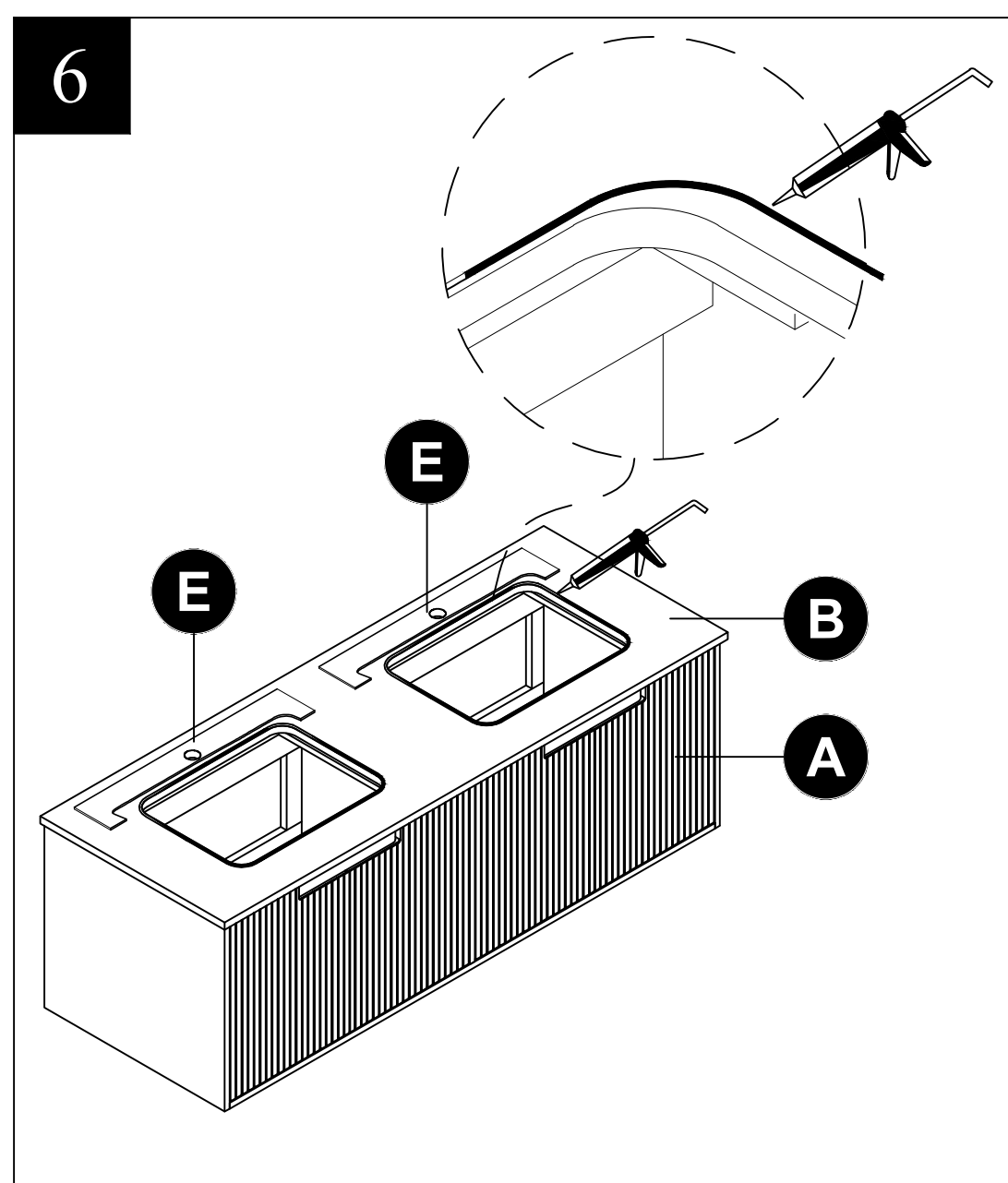
## 5. Installing the sink template

- Place two of the sink templates (E) on the vanity top (B).
- Align hole in sink template (E) with two of the holes in the vanity top (B).
- Make sure the sink template (E) is flush with the back edge of vanity top (B).



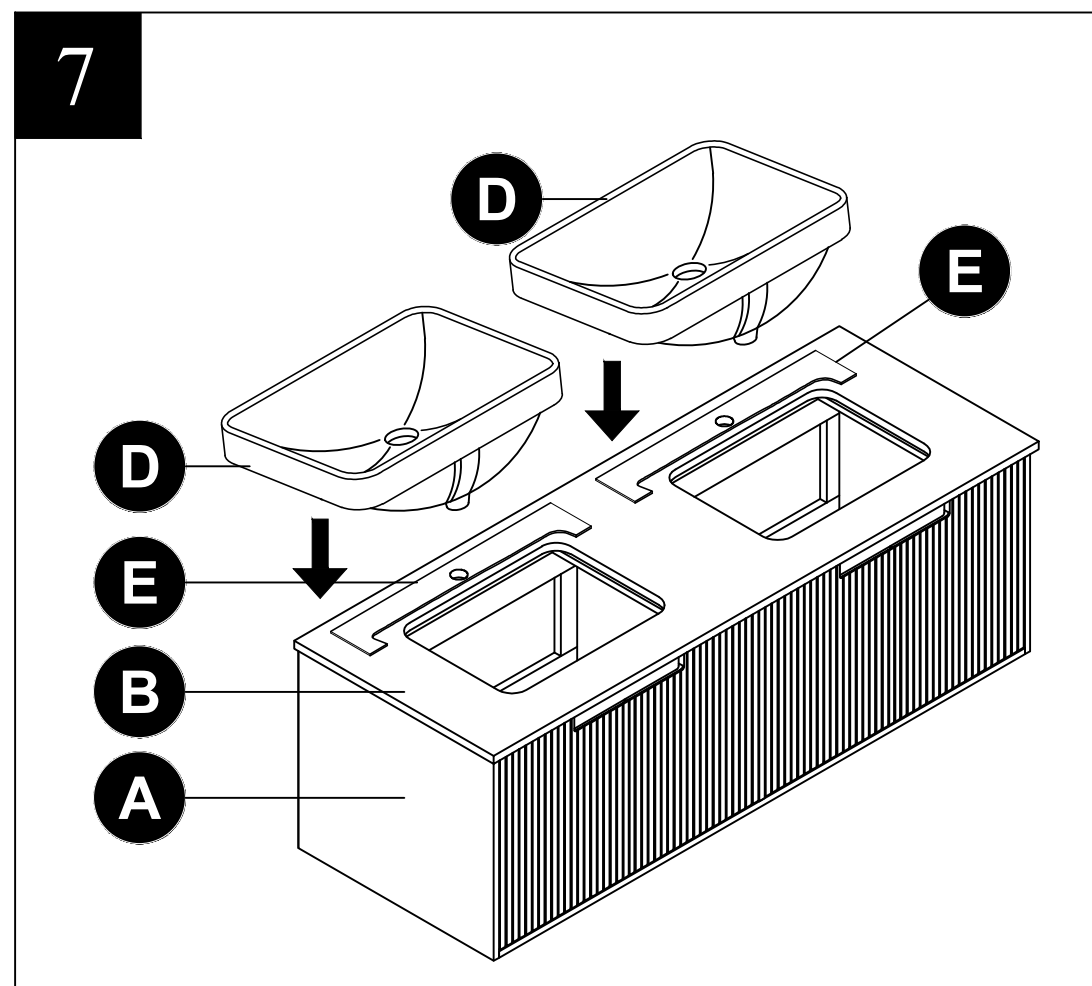
## 6. Applying silicone caulk

- Apply a thin bead of silicone caulk (not included) onto the vanity top (B) close to the edge of the sink cut out as pictured.



## 7. Installing the sink

- Gently lower two sinks (D) onto the vanity top (B), ensuring the sink over-flow holes is positioned at the front of vanity base (A).
- If needed, immediately use water to clean up any excess silicone caulk.

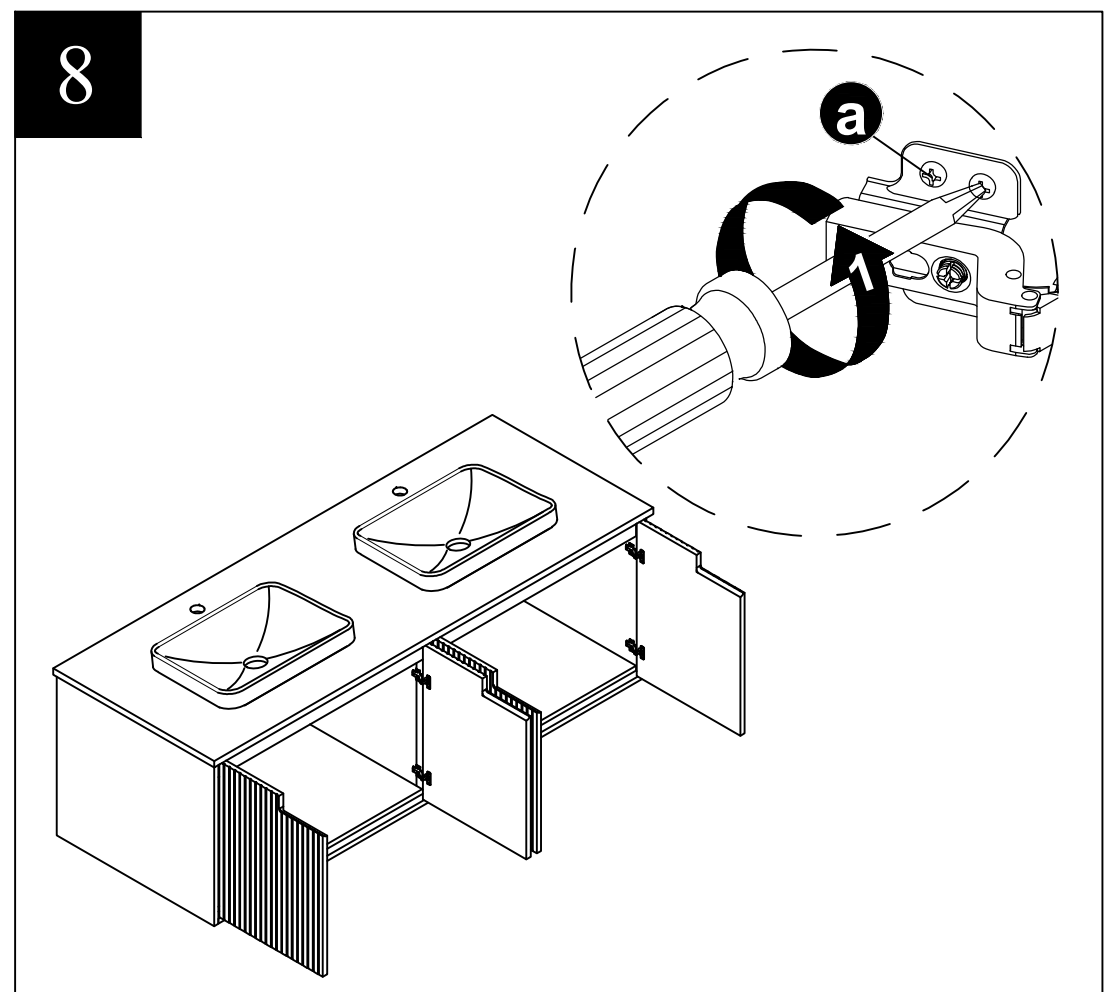




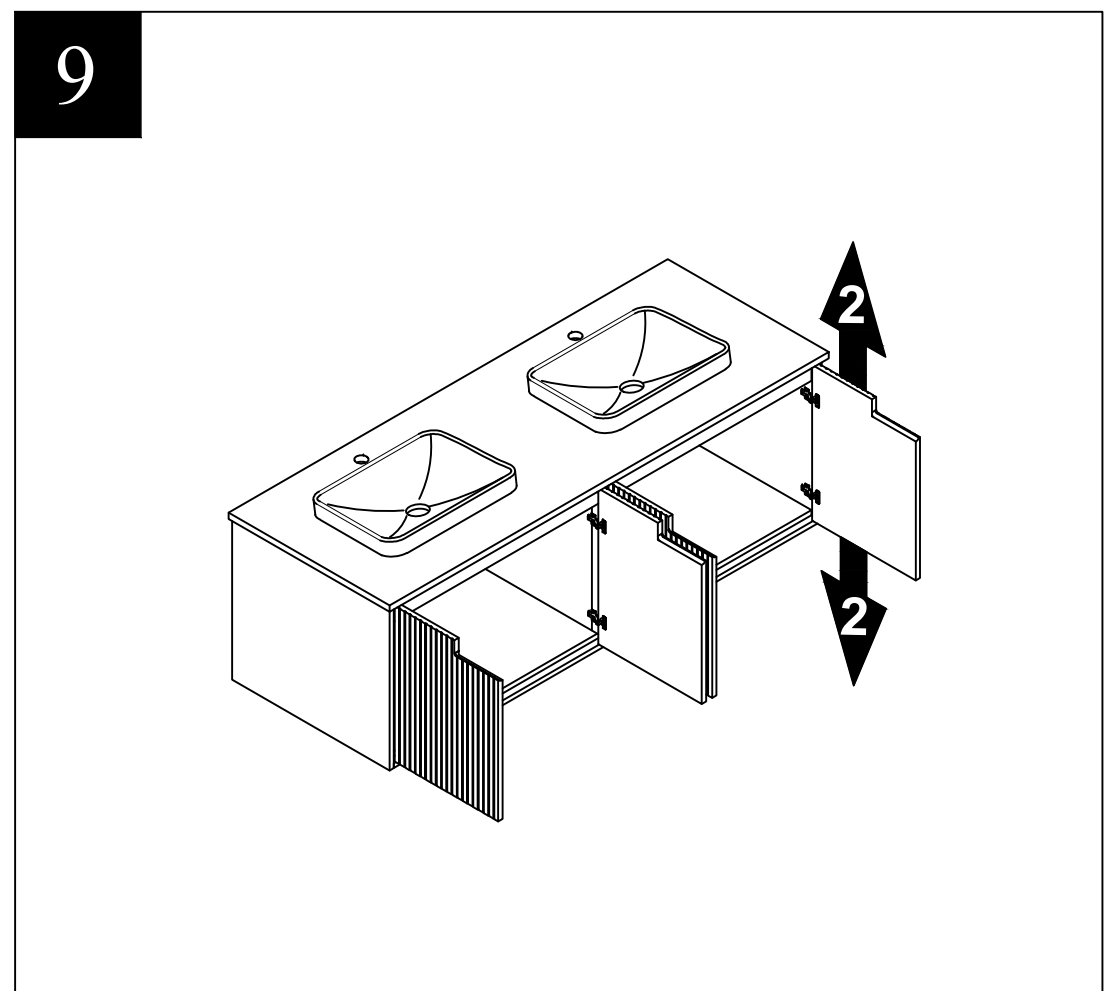
# ASSEMBLY INSTRUCTIONS

## 8. Adjusting the doors up or down (step 8 -> 10) (optional)

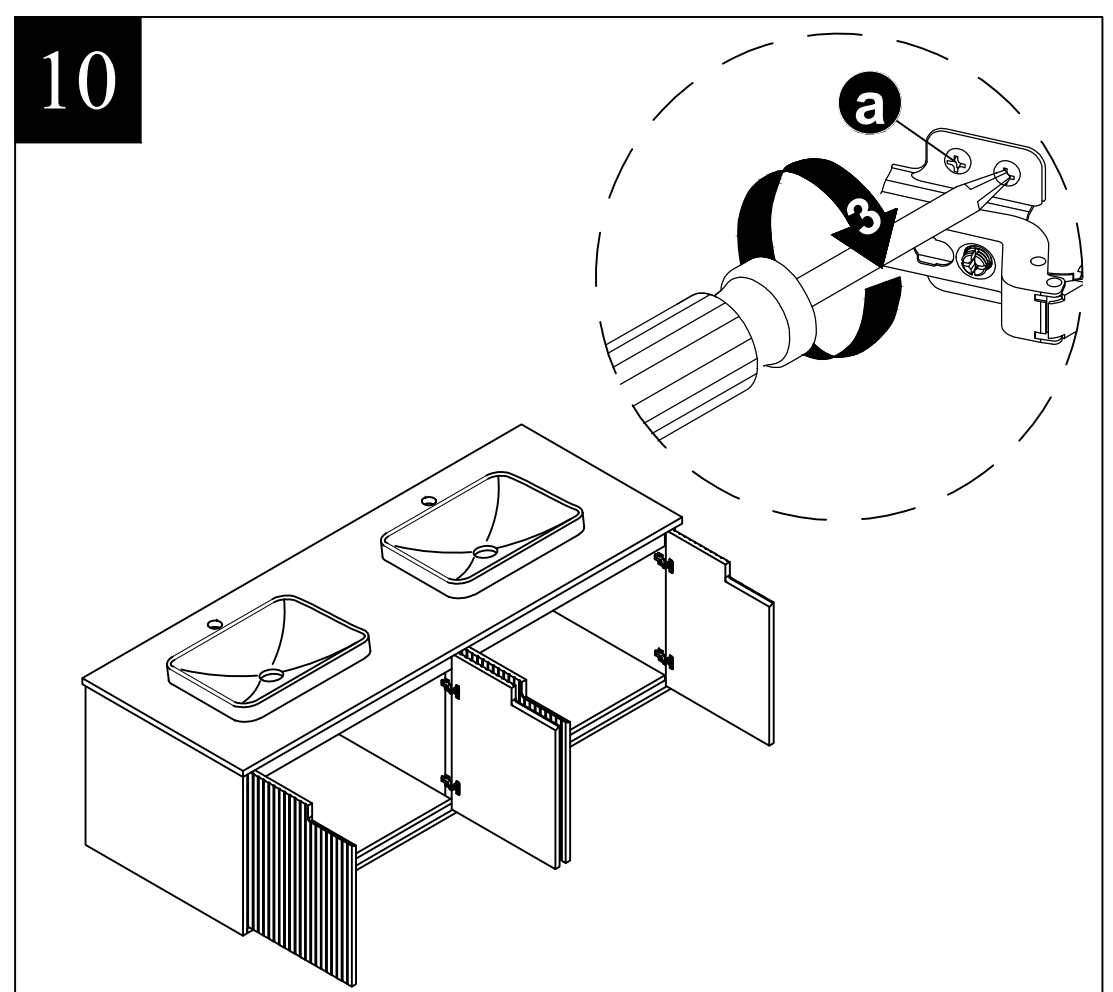
- Loosen screws (a) on both hinges.



## 9. Adjusting door up or down.



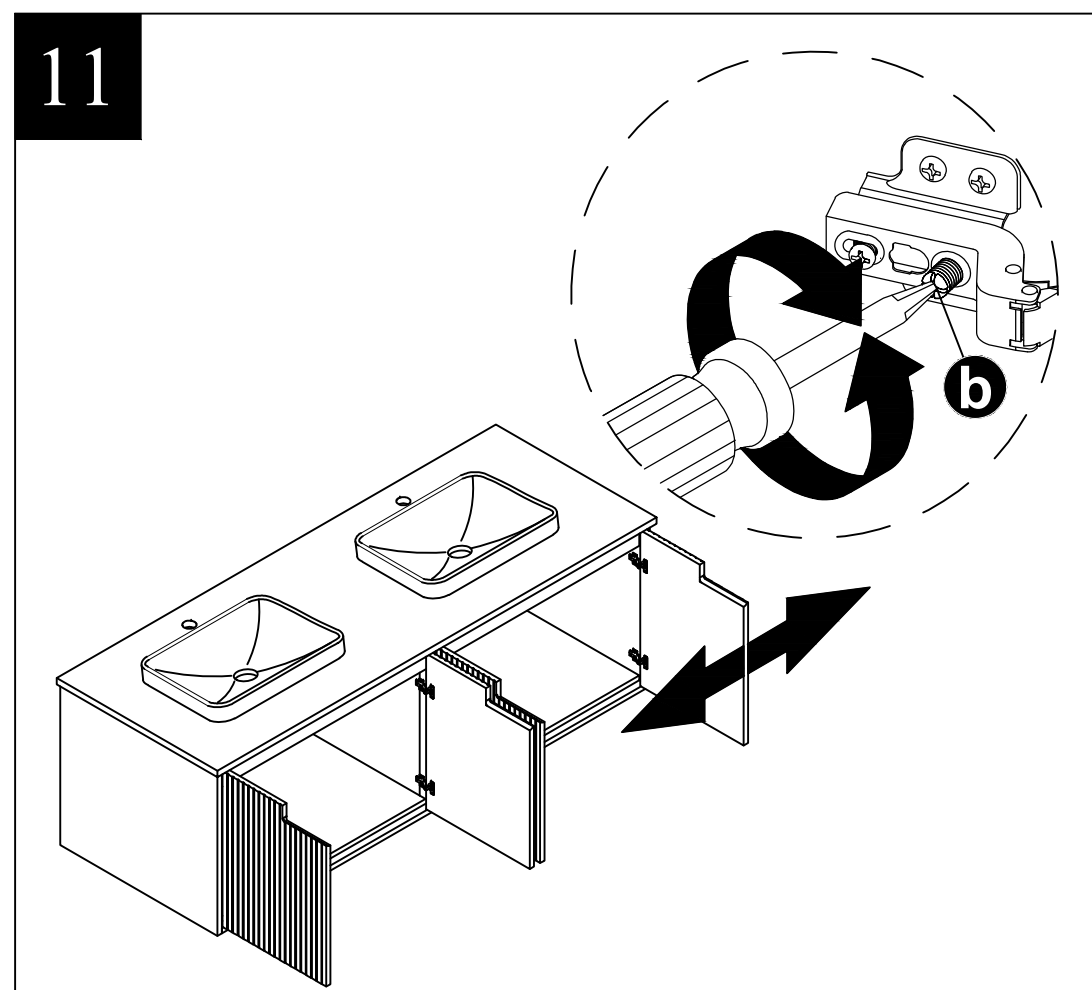
## 10. Retightening screws (a).



# ASSEMBLY INSTRUCTIONS

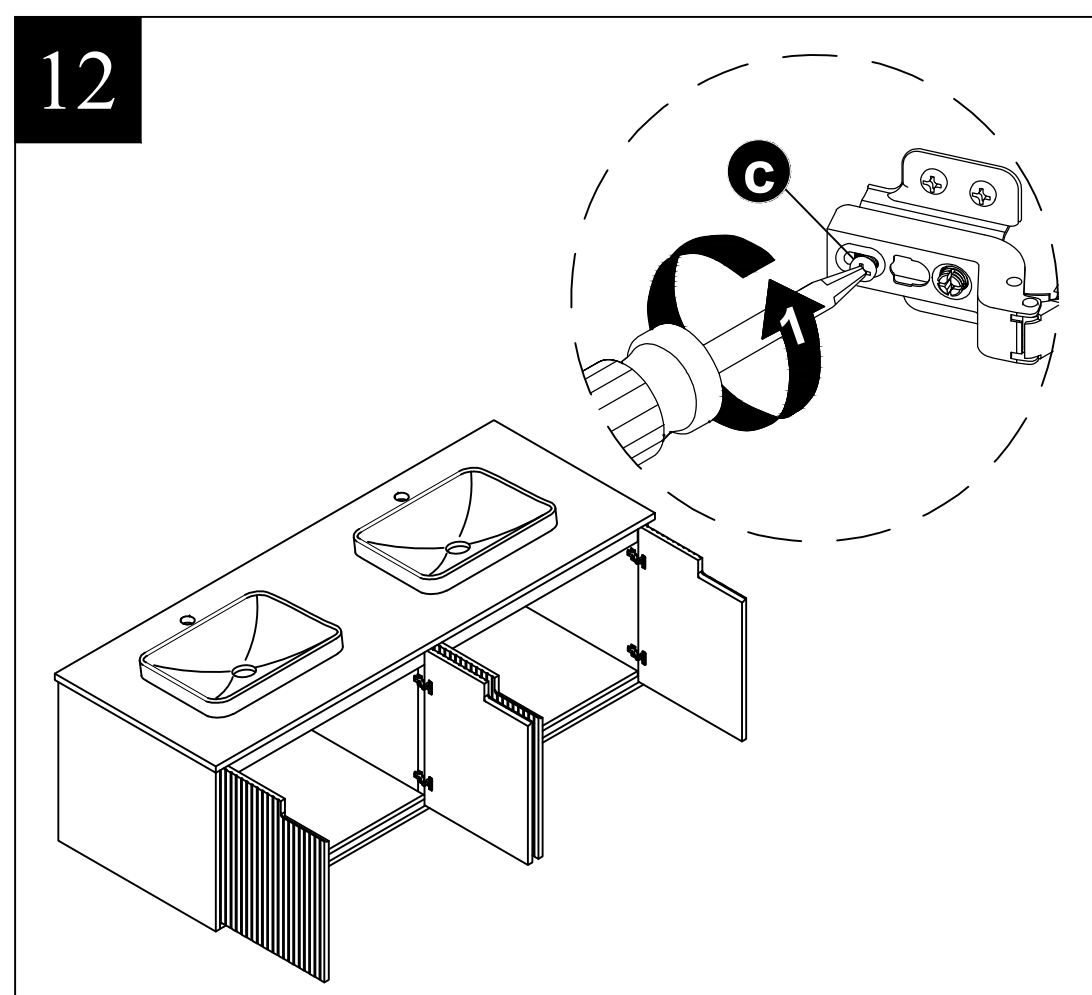
## 11. Adjusting the doors left or right (optional)

- Turn screws (b) on both hinges.

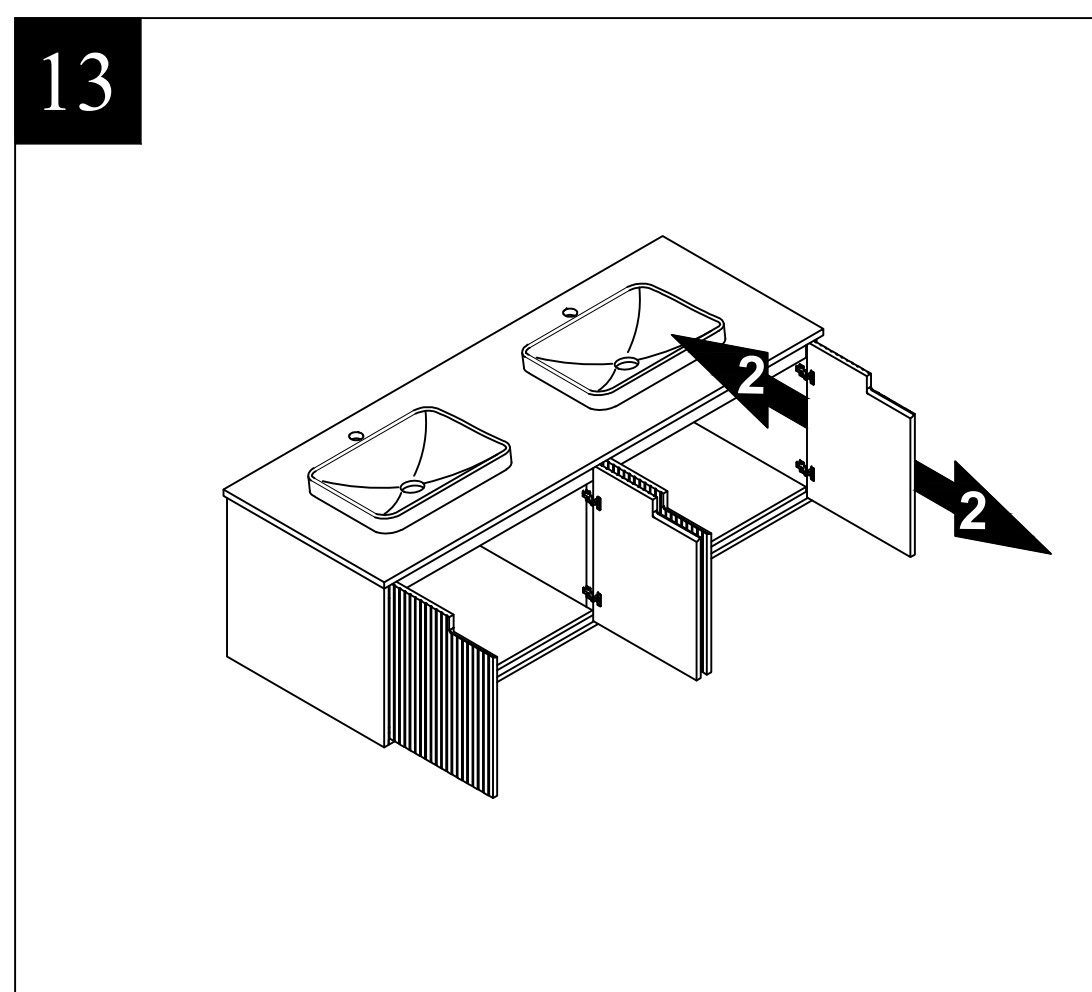


## 12. Adjusting the doors in or out (step 12 -> 14) (optional)

- Loosen screws (c) on both hinges.

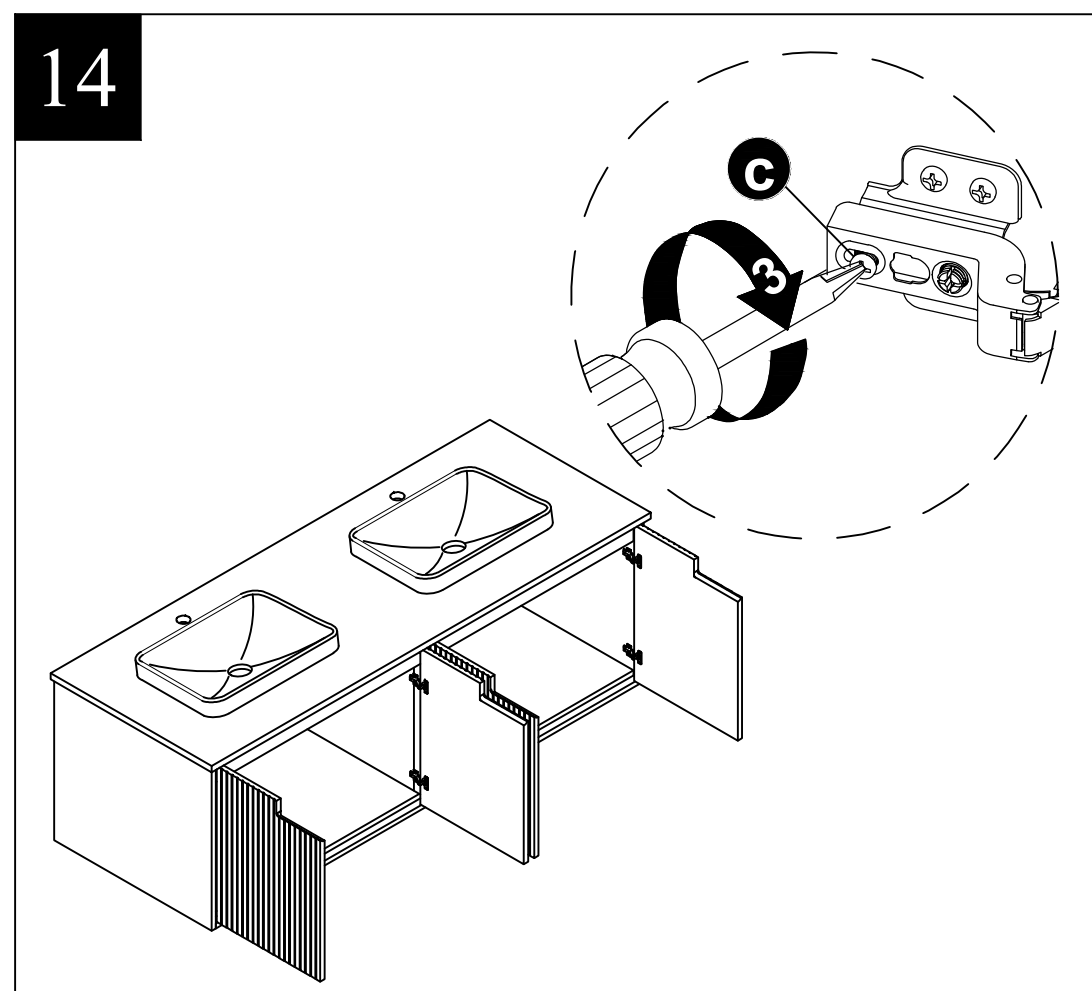


## 13. Adjusting the doors in or out.



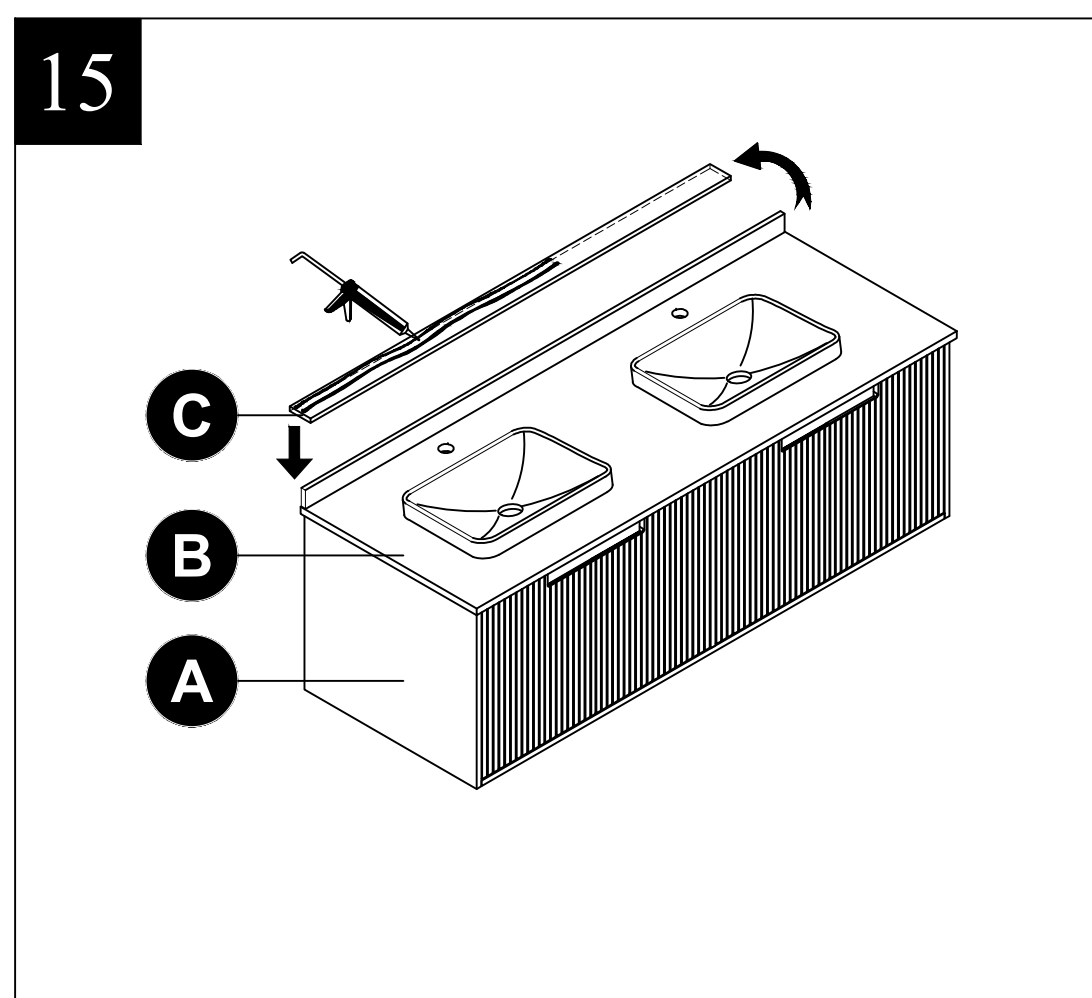
# ASSEMBLY INSTRUCTIONS

## 14. Retightening screws (c).



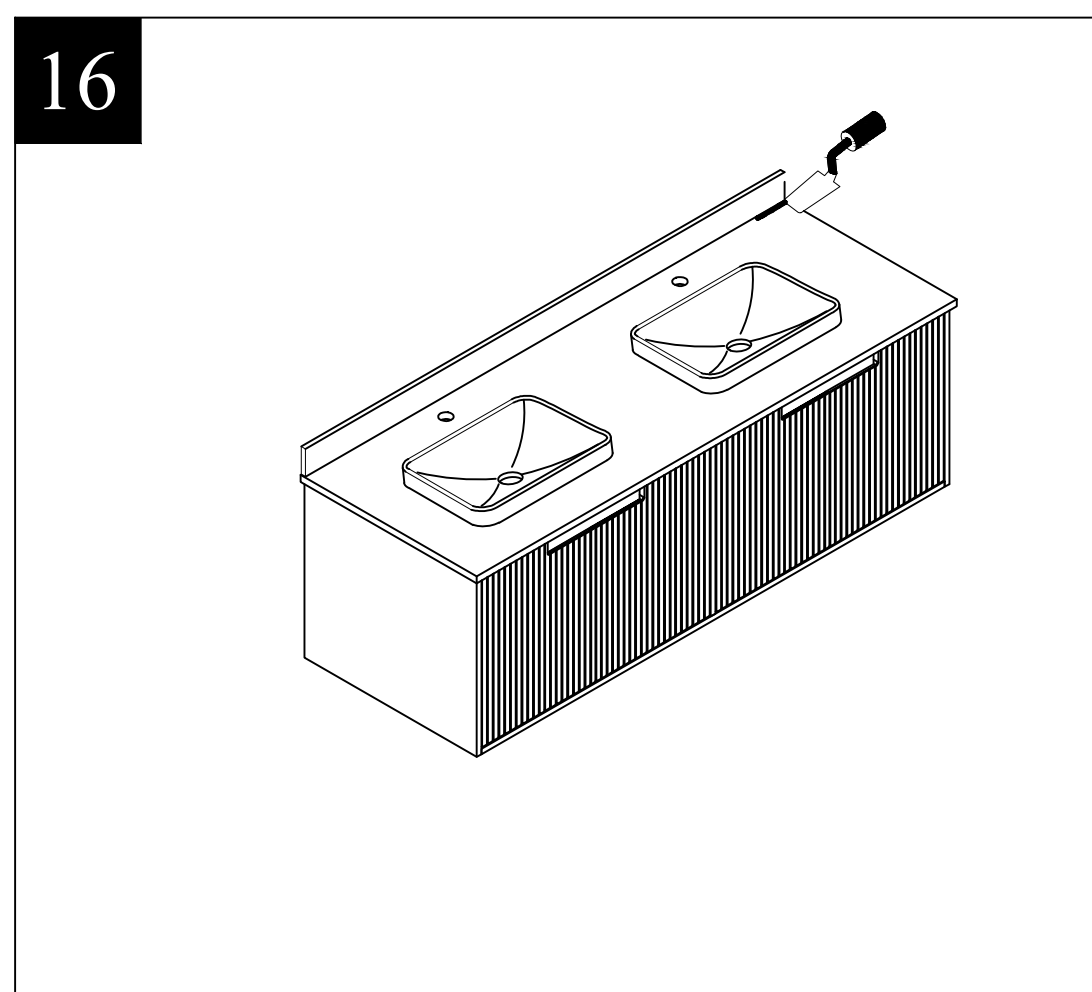
## 15. Applying silicon to the Backsplash (step 15 -> 17)

- Apply silicone to the unpolished back side and bottom of the Backsplash (C). Place the Backsplash (C) on the vanity (A). Be sure to align the Backsplash (C) with the top (B) of the vanity (A).



## 16. Removing silicon to the Backsplash

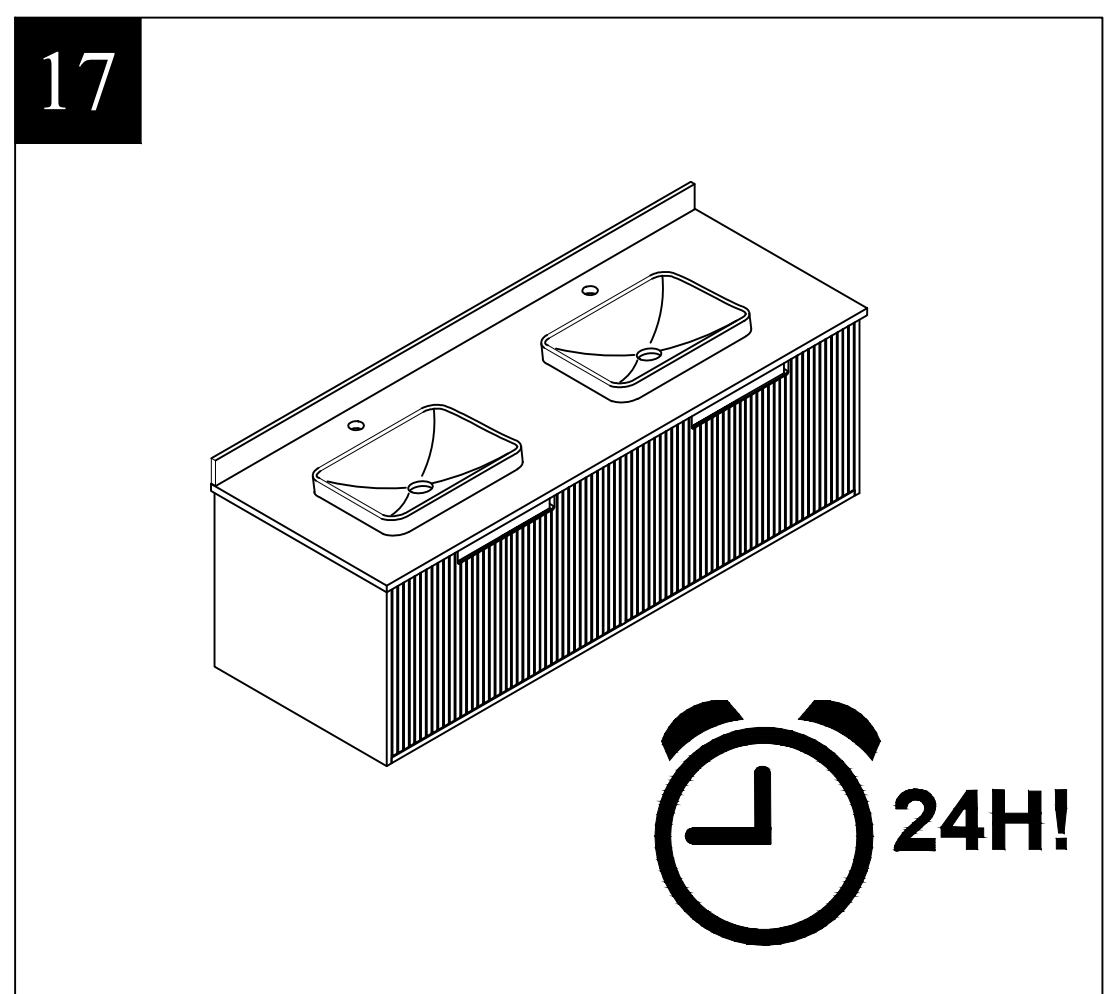
- Gently remove excess glue from the connecting area.



## ASSEMBLY INSTRUCTIONS

### 17. Needing time for silicon to be dried

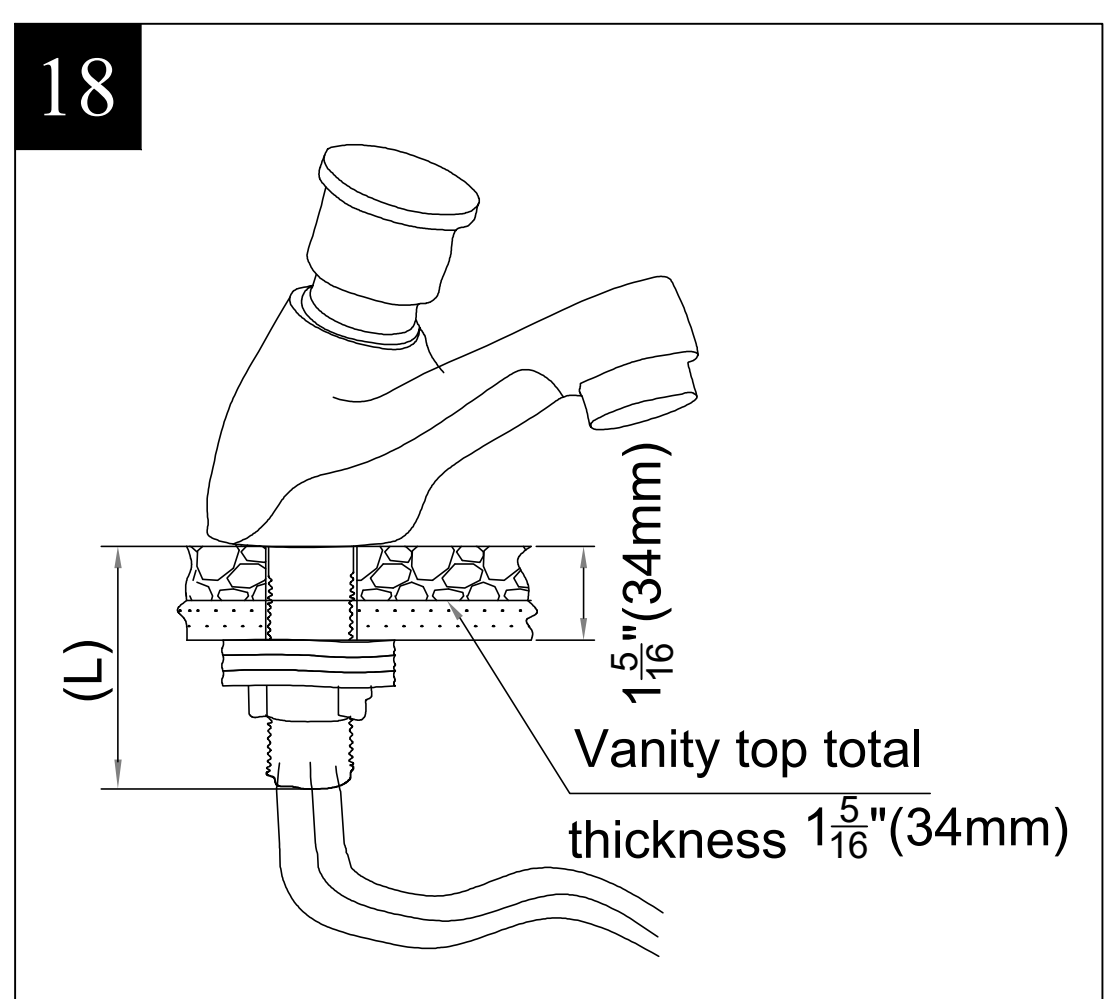
- Let the vanity and backsplash sit for 24 hour before use.



### 18. Installing the faucet (not included in the package)

Note: Make sure the thread of the faucet (L) is long enough to fix to the vanity top and connect the water system.

- Installing the faucet base on your own faucet instruction.

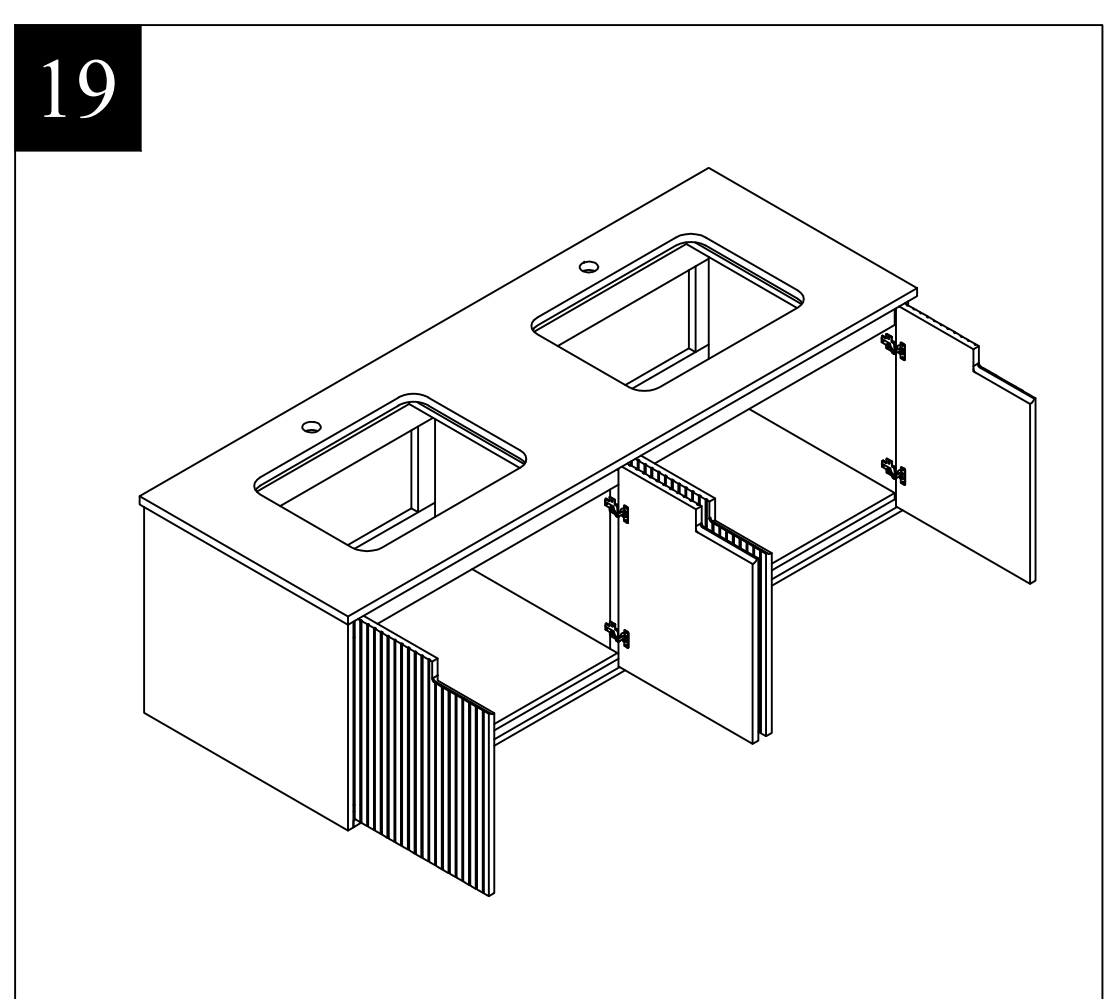


### 19. Removing top - reinstalling/replacing top (step 19 -> 22) (optional)

If you need to remove the top for any purpose, do so in the following manner:

- Open the doors.

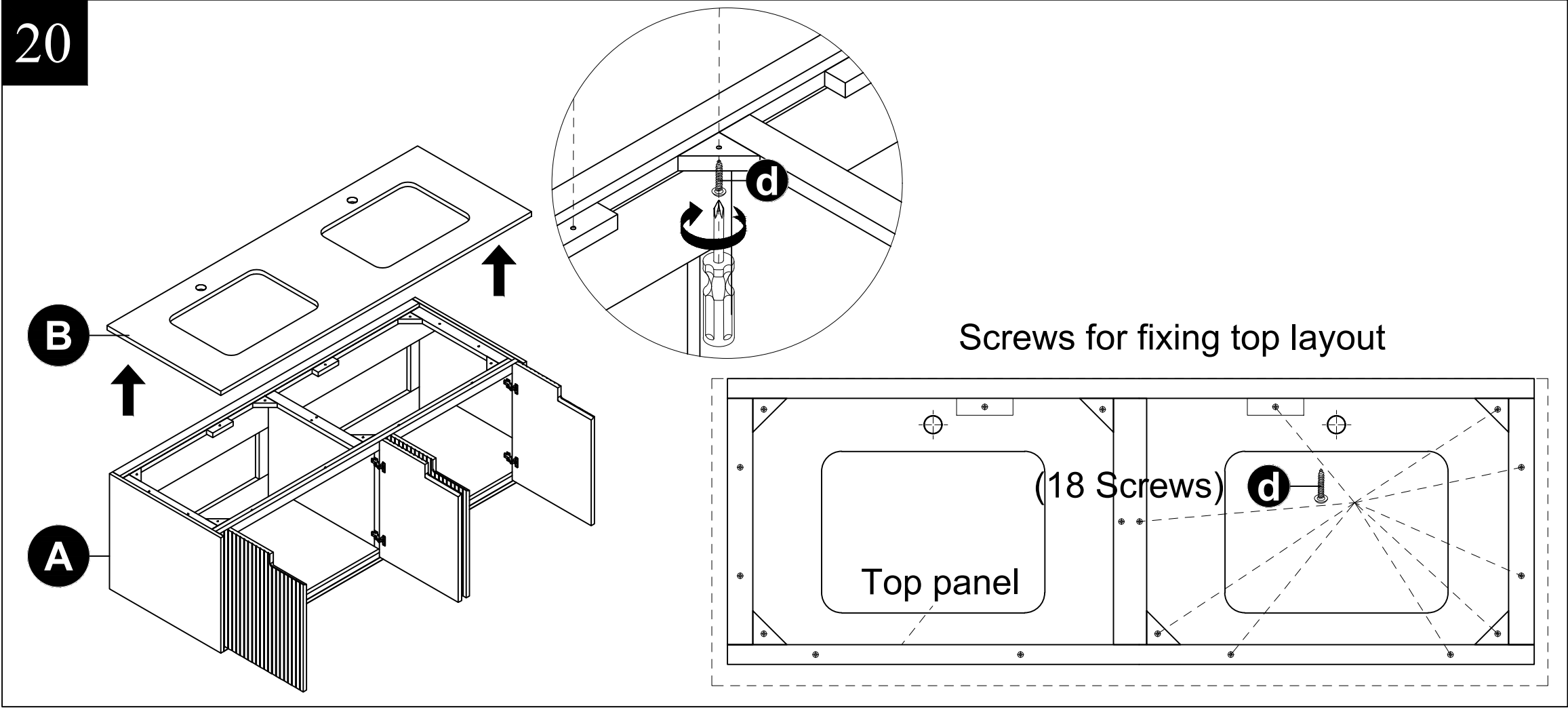
\*Note: When vanity top is preinstalled.



# ASSEMBLY INSTRUCTIONS

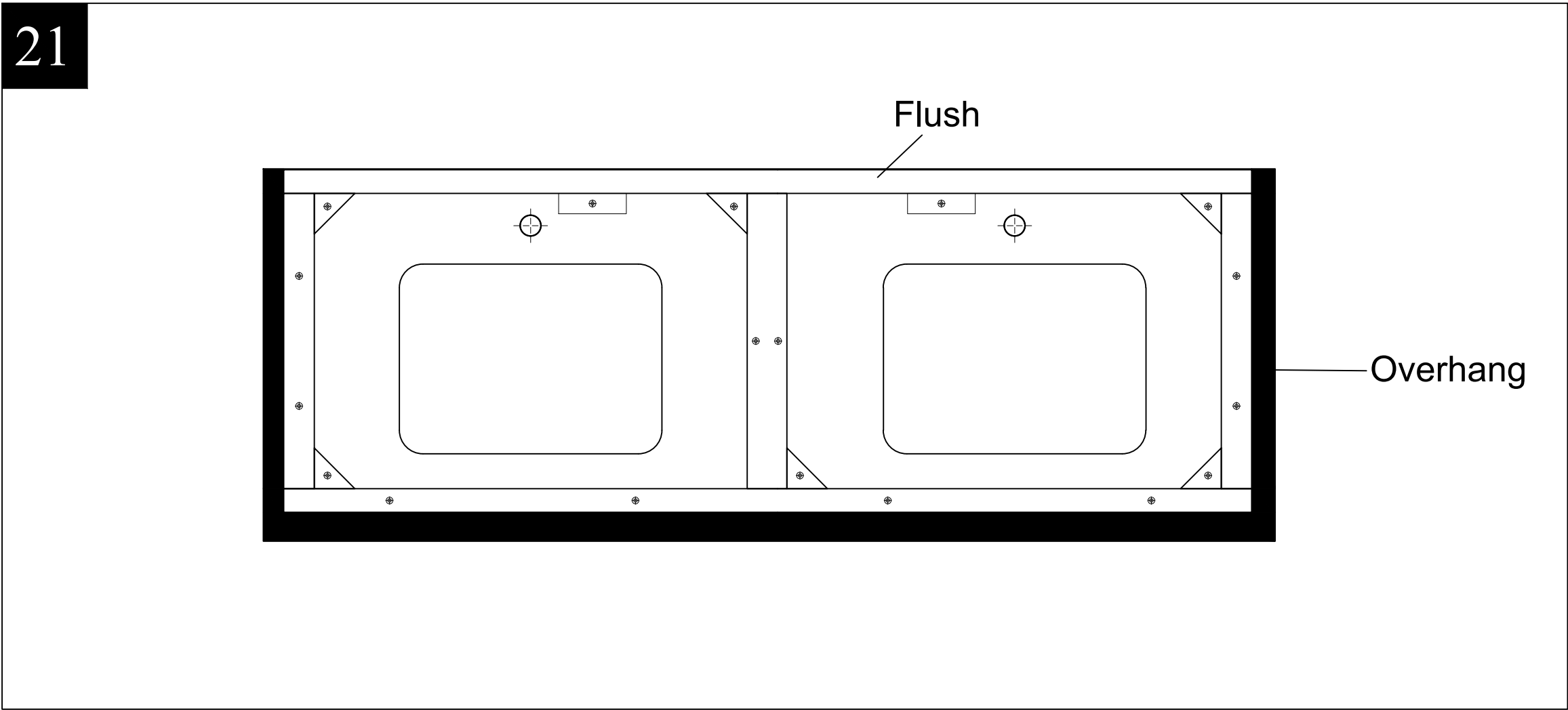
## 20. Removing the top

- Use a screwdriver (not provided) to unscrew these 18 wood screws (d), and place them face up onto a scratch free surface such as a foam sheet that came in the packaging.



## 21. Placing the top on the vanity

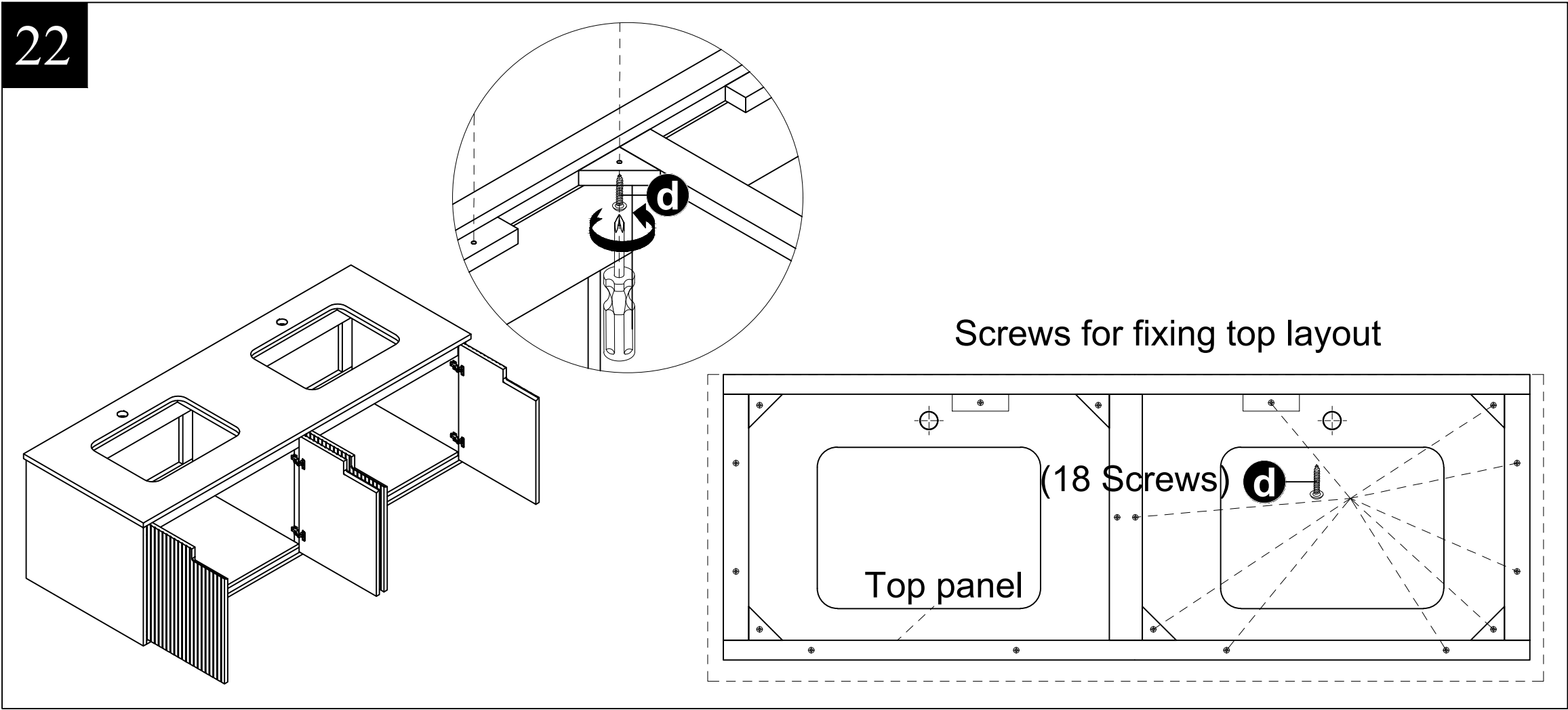
- Place the top on the vanity. Make sure it averages each side and is flush with the back.



# ASSEMBLY INSTRUCTIONS

## 22. Re-installing or replacing the top

- Use a screwdriver to secure (d) these 18 wood screws.



## CARE AND MAINTENANCE

---

- Dust the vanity regularly with a soft, non-lint producing cloth or household dusting product.
- You can clean the vanity with a gentle, non-abrasive household cleaner.
- Make sure to dry the wood immediately with a soft cloth or towel.
- The stone top can be cleaned using standard marble cleaning agents available at your local supplier.

## IMPORTANT

- Shade variations and patterns are an inherent characteristic of stone (e.g. granite, marble, engineered stone). Stone tops will vary from product to product. Use caution placing items such as soap or any fragranced material on the stone surface. Use a soap dish, coaster or similar item to protect the surface if placing any soap or fragranced products on the stone.
- If soap or fragranced products come in contact with the stone top, rinse the surface with water and dry using a soft non-abrasive cloth.
- **WARNING:** Must use cleaning agents safe for stone. check your cleaning agents use restrictions before using on any stone. Damage to the stone may result. Vanity manufacturer not responsible for damage caused by improper cleaning agents or soaps used. Warranty will not cover damage caused by the use of improper soaps or cleaning agents.
- **DO NOT** use products to clean the stone top that contain acetone, lemon, vinegar or other acids as these may cause damage to the stone surface.
- Periodically reseal the stone top using an appropriate stone sealer available from your local home store. Follow the manufacturer's directions on how to apply.

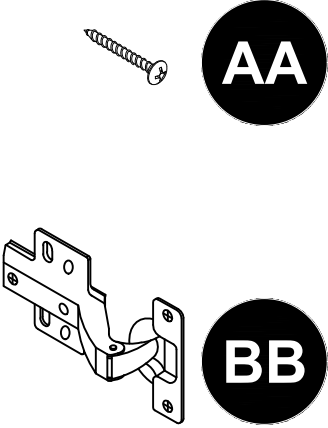
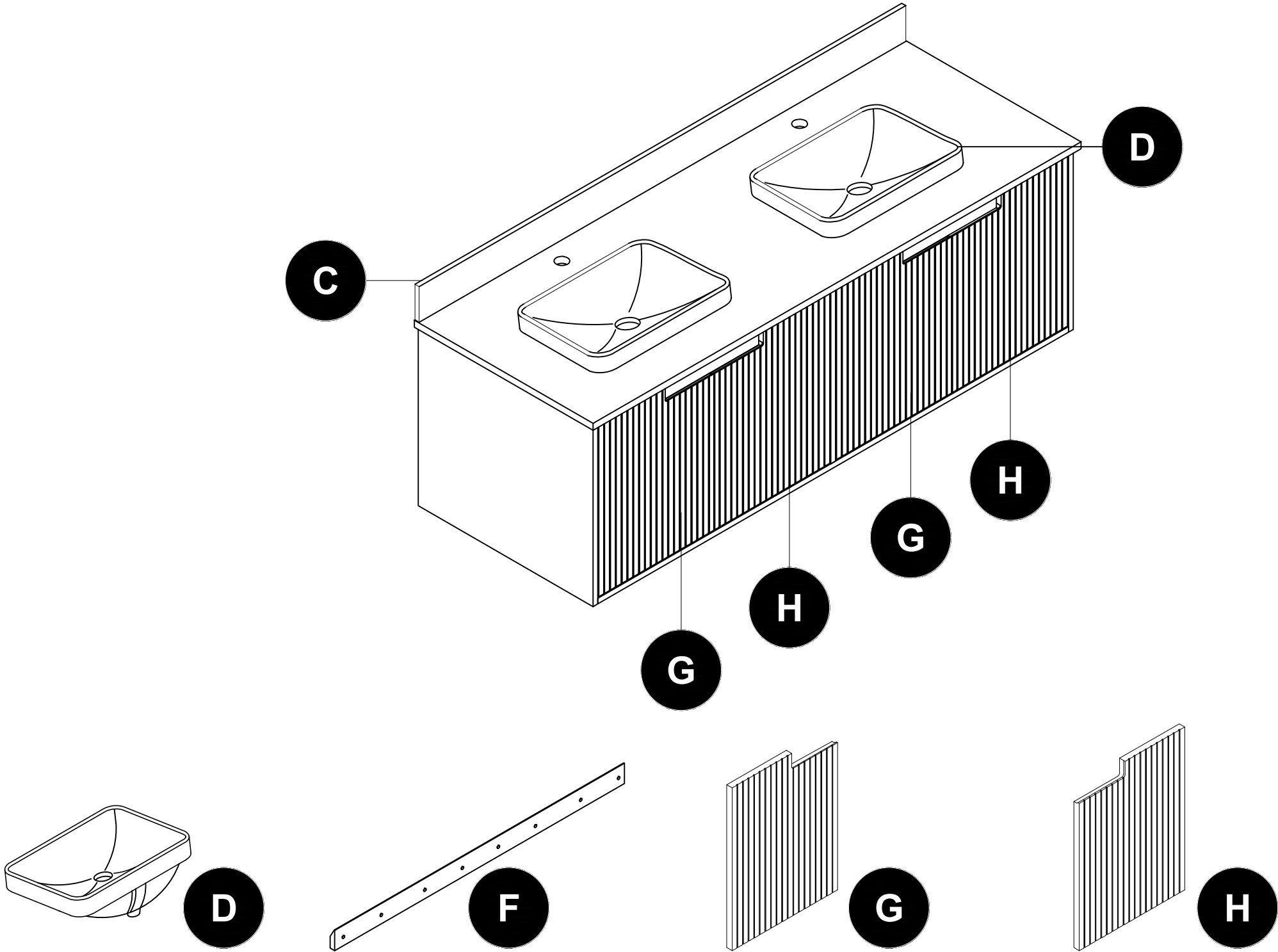
## WARRANTY

---

The manufacturer warrants this item against defects in materials and workmanship for a period of one (1) year from the date of original retail purchase. This warranty applies only to the original purchaser. This warranty does not apply to any damage on the product by accident, misuse, or modified, improper installation or by affixing accessories not produced by the manufacturer. The manufacturer is not accountable whatsoever for product installation during the warranty period. There is no further expressed warranty. The manufacturer shall not be legally responsible for incidental, consequential or special damages arising at or in connection with product use or performance except as may otherwise be accorded by law. The manufacturer disclaims any and all implied warranties.

# REPLACEMENT PARTS LIST

For replacement parts, call our customer service department at 888-251-1026, 8 a.m. - 8 p.m., EST, Monday - Sunday. You may also contact us at [ascs@lowes.com](mailto:ascs@lowes.com).



| PART  | DESCRIPTION            | PART#              |
|-------|------------------------|--------------------|
| C     | Backsplash             | TJ-0328V6022-BL    |
| D     | Sinks                  | TJ-0328V6022-SK    |
| F     | Wall hanging cleats    | TJ-0328V6022-WHC   |
| G (1) | Royal blue left doors  | TJ-0328V6022BLU-LD |
| G (2) | Walnut left doors      | TJ-0328V6022BR-LD  |
| H (1) | Royal blue right doors | TJ-0328V6022BLU-RD |
| H (2) | Walnut right doors     | TJ-0328V6022BR-RD  |
| AA    | Screws                 | TJ-0328V-S         |
| BB    | European hinges        | TJ-0328V-EH        |

NOTE: G (1), H (1) for Item TJ-0328V6022BLU  
G (2), H (2) for Item TJ-0328V6022BR