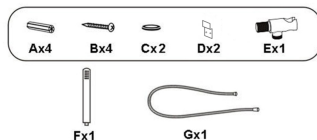
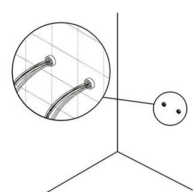
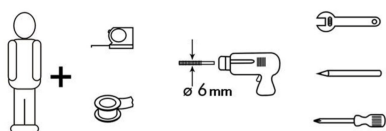


## LIST OF COMPONENTS

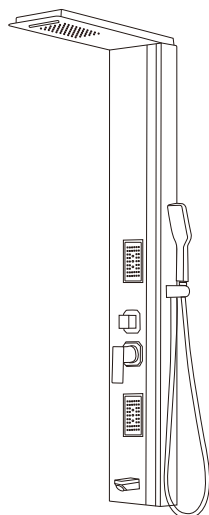


## ELEMENTS FOR INSTALLATION

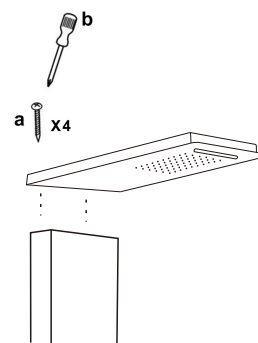


**WARNING!**  
Before testing, please turn on the faucet and leave the water running for about 3 minutes to evacuate the air and dirt trapped in the pipes, in order to prevent these residues causing some damage to the shower panel.

## INSTRUCTION



a. screw and nut  
b. tool

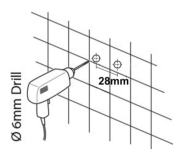


Put the shower head arm into panel body, then tightening the screws

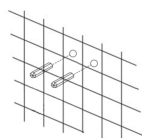
## INSTRUCTIONS

**WARNING!** Before drilling, please make sure there are no pipes or cables in the wall.

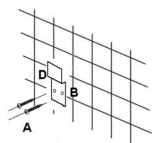
### I. Drill two holes on the wall



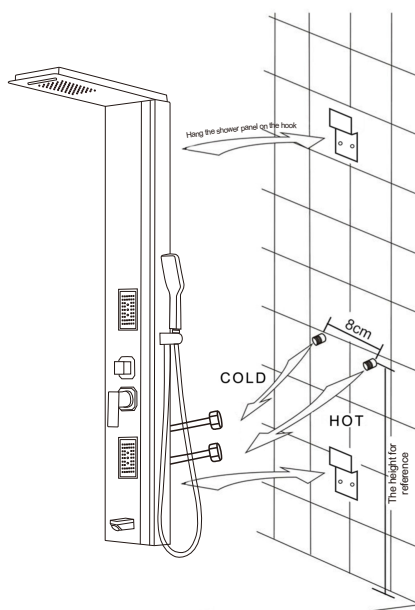
### II. Insert the screws into the holes



### III. Fasten the hooks to the wall with the screws



## MOUNTING BY WALL



- A Top spray
- B Hand shower
- C Massage back spray
- D Function controller

