

# FIRST ALERT®

## SC2/SM2/CO1 Series 120V Smoke, Combination, & Carbon Monoxide Alarms



### Getting Started Guide

#### Everything you need is Online!



Install, operate, and maintain your alarm using easy-to-follow mobile documentation with instructional videos.

Scan the QR code to find out more or enter the following URL: [info.firstalert.com/sc2-sm2-im](http://info.firstalert.com/sc2-sm2-im)

### This Manual Covers The Following Models

Model	Type	Battery Backup
SM2-W01 & SM2-W01A	Smoke	AA Battery
SM2-W10 & SM2-W10A	Smoke	10-Year Sealed
SC2-W01 & SC2-W01A	Smoke/CO	AA Battery
SC2-W10 & SC2-W10A	Smoke/CO	10-Year Sealed
CO1-W01 & CO1-W01A	CO	AA Battery

#### IMPORTANT! PLEASE READ CAREFULLY & SAVE FOR FUTURE REFERENCE

The warnings/limitations in this manual contains important information about your Alarm's operation.

#### MUST BE REPLACED EVERY 10 YEARS!

### Basic Safety Information

#### IMPORTANT:

- Dangers, Warnings, and Cautions alert you to important operating instructions or to potentially hazardous situations. Pay special attention to these items.
- This Smoke/CO Alarm is approved for use in single-family residences. It is NOT designed for marine or RV use.

#### WARNING!

This combination Smoke/Carbon Monoxide (CO) Alarm has two separate alarms. THIS CARBON MONOXIDE ALARMING DEVICE IS DESIGNED TO DETECT CARBON MONOXIDE GAS FROM ANY SOURCE OF COMBUSTION. IT IS NOT DESIGNED TO DETECT SMOKE, FIRE, OR ANY OTHER GASES UNLESS THE PRODUCT HAS BEEN INVESTIGATED AND DETERMINED TO COMPLY WITH THE APPLICABLE REQUIREMENTS. THIS DEVICE ONLY INDICATES THE PRESENCE OF CARBON MONOXIDE GAS AT THE SENSOR. CARBON MONOXIDE GAS MIGHT BE PRESENT IN OTHER AREAS. The Smoke Alarm will only indicate the presence of smoke that reaches the sensor. The Smoke Alarm is not designed to sense gas, smell or flames.

#### DANGER!

**ELECTRICAL SHOCK HAZARD**  
Turn off the power to the area where the Alarm is installed before removing it from the mounting bracket. Failure to turn off the power first may result in serious electrical shock, injury or death.

#### WARNING!

- This unit will not alert hearing impaired residents. It is recommended that you install special units which use devices like flashing strobe lights to alert hearing impaired residents.
- Installation of this unit must conform to the electrical codes in your area. Articles 210 and 300.3 (B) of NFPA 70 (NEC), NFPA 72, NFPA 101; SBC (SBCCI), UBC (IGBO), NBC (BOCA), OTFDC (CABO), and any other local or building codes that may apply. Wiring and installation must be performed by a licensed electrician. Failure to follow these guidelines may result in injury or property damage.
- Never disconnect the power from an AC powered unit to stop an unwanted alarm. Doing so will disable the unit and remove your protection. In the case of a true unwanted alarm open a window or fan the smoke away from the unit. The alarm will reset automatically when it returns to normal operation.
- This unit must be powered by a 24-hour, 120VAC pure sine wave 60Hz circuit. Be sure the circuit cannot be turned off by a switch, dimmer, or ground fault circuit interrupter. Failure to connect this unit to a 24-hour circuit may prevent it from providing constant protection.
- This Alarm must have AC or battery power to operate. If the AC power fails, battery back-up will allow the alarm to sound for at least 4 minutes. If AC power fails and the battery is weak, protection should last for at least 7 days. If AC power fails and the battery is dead or missing, the alarm cannot operate.
- Connect this unit ONLY to other compatible units. See "HOW TO INSTALL THIS SMOKE/CO ALARM" for details. Do not connect it to any other type of alarm or auxiliary device. Connecting anything else to this unit may damage it or prevent it from operating properly.
- This Smoke/CO Alarm has a battery drawer which resists closing unless a battery is installed. This warns you the unit will not operate under DC power without a battery.
- Do not stand too close to the unit when the alarm is sounding. It is loud to wake you in an emergency. Exposure to the horn at close range may harm your hearing.
- Do not paint over the unit. Paint may clog the openings to the sensing chambers and prevent the unit from operating properly.

### 01 Introduction

Thank you for choosing First Alert® for your Smoke & Carbon Monoxide Alarm needs. You have purchased a state-of-the-art Smoke & Smoke/Carbon Monoxide Alarm designed to help provide you with early warning of a smoke and/or carbon monoxide danger. Please take the time to read this manual and make the Smoke & Carbon Monoxide Alarm an integral part of your family's safety plan.

All First Alert® Smoke Alarms conform to regulatory requirements, including UL STD 5531 and are designed to detect particles of combustion. All models conform to and are listed UL 217 (Smoke) and UL 2034 (CO). All smoke detectors use Photoelectric technology. Smoke particles of varying number and size are produced in all fires.

**IMPORTANT:** The replacement date that appears on the device is the date beyond which the device may no longer detect carbon monoxide accurately and should be immediately replaced.

### Placement

Follow NFPA 70, NFPA 72, C22.1-12, and ULC 553 for placement and wiring methods. For full details, visit [nfpa.org](http://nfpa.org) or scan the QR code above.

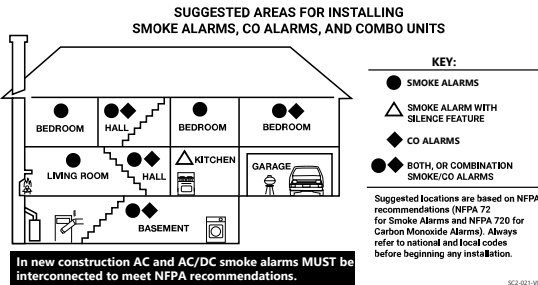
#### WARNING!

Installation of the device should not be used as a substitute for proper installation, use, and maintenance of fuel-burning appliances, including appropriate ventilation and exhaust systems.

### Where To Install This Alarm

Minimum coverage for Smoke Alarms, as recommended by the National Fire Protection Association (NFPA), is one Smoke Alarm on every floor, in every sleeping area, and in every bedroom. When smoke is detected, all alarms will sound the smoke horn pattern. For CO Alarms, the National Fire Protection Association (NFPA) recommends that a CO Alarm should be centrally located outside of each separate sleeping area in the immediate vicinity of the bedrooms. For added protection, install additional CO Alarms in each separate bedroom, and on every level of your home.

#### Recommended Placement:



### In General, Install Combination Smoke and Carbon Monoxide Alarms according to nFPA 72 recommendations:

FOR YOUR INFORMATION, THE NATIONAL FIRE ALARM AND SIGNALING CODE, NFPA 72, READS AS FOLLOWS:

- 29.8.1.1 \*Required Smoke Detection
1. In all sleeping rooms and guest rooms
2. Outside of each separate dwelling unit sleeping area, within 21 ft (6.4 m) of any door to a sleeping room, with the distance measured along a path of travel
3. On every level of a dwelling unit, including basements
4. On every level of a residential board and care occupancy (small facility), including basements and excluding crawl spaces and unfinished attics
5. In living area(s) of a guest suite
6. In the living area(s) of a residential board and care occupancy (small facility)

(Reproduced with permission from NFPA 72® -2020, National Fire Alarm and Signaling Code® Copyright © 2019, National Fire Protection Association. This reprinted material is not the complete and official position of the NFPA on the referenced subject, which is represented only by the standard in its entirety which may be obtained through the NFPA website at [www.nfpa.org](http://www.nfpa.org)) (NFPA 72® and National Fire Alarm and Signaling Code® are registered trademarks of the National Fire Protection Association, Inc., Quincy, MA.)

In addition, adhere to the following:

- In the hall near every sleeping area. If a hall is more than 40 feet (12 meters) long, install a unit at each end.
- At the top of first-to-second floor stairs and at the bottom of the basement stairs.
- For additional coverage, install Alarms in all rooms, halls, and storage areas, where temperatures normally remain between 40° F and 100° F (4.4° C and 37.8° C).
- See "Avoiding Dead Air Spaces" below for more information on proper placement on walls and ceilings.

**NOTE:** For any location, make sure no door or other obstruction could keep carbon monoxide or smoke from reaching the Alarm.

### Installing Smoke/CO Alarms in Mobile Homes

For minimum security install one Smoke/CO Alarm as close to each sleeping area as possible. For more security, put one unit in each room. Many older mobile homes (especially those built before 1978) have little or no insulation. If your mobile home is not well insulated, or if you are unsure of the amount of insulation, it is important to install units on inside walls only.

### Where Not To Install This Alarm

**For Best Performance, It Is Recommended You Avoid Installing Smoke/CO Alarms In These Areas:**

- Shall not be located behind furniture, drapes, or any other object where it might not be seen or heard
- In garages, furnace rooms, crawl spaces and unfinished attics. Avoid extremely dusty, dirty or greasy areas.
- Where combustion particles are produced. Combustion particles form when something burns. Areas to avoid include poorly ventilated kitchens, garages, and furnace rooms. Keep units at least 10 feet (3 meters) from the sources of combustion particles (stove, furnace, water heater, space heater) if possible. The placement recommendations are intended to keep these Alarms at a reasonable distance from a fuel-burning source, and thus reduce "unwanted" Alarms. Ventilate these areas as much as possible.
- Within 5 feet (1.5 meters) of any cooking appliance.
- In extremely humid areas. This Alarm should be at least 10 feet (3 meters) from humid areas.
- In direct sunlight.
- In turbulent air, like near ceiling fans or open windows. Blowing air may prevent smoke from reaching the sensors.
- NOTE:** This Alarm should not be installed within 36 inches of ceiling fans or supply registers.
- In areas where temperature is colder than 40° F (4.4° C) or hotter than 100° F (37.8° C).
- In insect infested areas. Insects can clog the openings to the sensing chamber.
- Less than 12 inches (305 mm) away from fluorescent lights. Electrical "noise" can interfere with the sensor.
- Prolonged exposure to certain chemicals can impact the detector's performance, please install this unit away from exposure to cleaning agents and other household chemicals.
- In "dead air" spaces. "Dead air" spaces may prevent smoke from reaching the Smoke Alarm.

### Avoiding Dead Air Spaces

"Dead air" spaces may prevent smoke from reaching the Smoke Alarm. To avoid dead air spaces, follow the installation recommendations below.

**On ceilings,** install Smoke Alarms as close to the center of the ceiling as possible. If this is not possible, install the Smoke Alarm at least 4 inches (102 mm) from the wall or corner.

**For wall mounting** (if allowed by building codes), the top edge of Smoke Alarms should be placed between 4 inches (102 mm) and 12 inches (305 mm) from the wall/ceiling line, below typical "dead air" spaces.

**On a peaked, gabled, or cathedral ceiling,** install the first Smoke Alarm within 3 feet (0.9 meters) of the peak of the ceiling, measured horizontally. Additional Smoke Alarms may be required depending on the length, angle, etc. of the ceiling's slope. Refer to NFPA 72 for details on requirements for sloped or peaked ceilings.

For additional information, contact your local Authority Having Jurisdiction (AHJ).

### 02 Installation

#### How To Install This Smoke/co Alarm

This Smoke/CO Alarm is designed to be mounted on any standard wiring junction box up to a 4-inch (10 cm) size, on either the ceiling or wall (if allowed by local codes). Read "Where To Install This Alarm" above and "Where Not To Install This Alarm" above" in the Regulatory Guide before you begin installation. **NOTE:** Mount the alarm flush to the electrical box to eliminate air leaks between the ceiling surface and the mounting bracket.

**Tools you will need:** Needle-nose pliers or utility knife • Standard flathead screwdriver • Wire strippers.

#### DANGER!

**ELECTRICAL SHOCK HAZARD**  
Turn off the power to the area where the Alarm is installed before removing it from the mounting bracket. Failure to turn off the power first may result in serious electrical shock, injury or death.

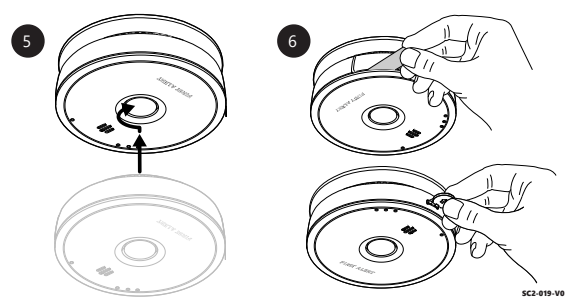
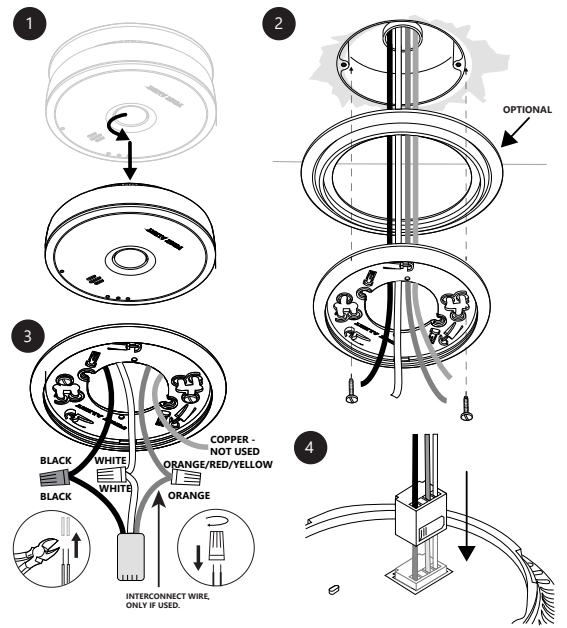
#### Follow These Initial Installation Steps

The basic installation of this Alarm is similar whether you want to install one Alarm, or interconnect more than one Alarm. If you are interconnecting more than one Alarm, you MUST read "Special Requirements for Interconnected Alarms" below" before you begin installation.

**NOTE:** Install in accordance with installation instructions, applicable codes and ordinances and in a manner acceptable to the authority having jurisdiction. Check with your local Fire Department for current requirements in your area.

#### IMPORTANT:

- Never connect the hot or neutral wires in the junction box to the orange interconnect wire. Never cross hot and neutral wires between Alarms.
- Improper wiring of the power connector or the wiring leading to the power connector will cause damage to the Alarm and may lead to a non-functioning Alarm.
- Make sure the Alarm is not receiving excessively noisy power. Examples of noisy power could be major appliances on the same circuit, power from a generator or solar power, light dimmer on the same circuit or mounted near fluorescent lighting. Excessively noisy power may cause damage to your Alarm.



- NOTES:**
- If using the models with replaceable batteries, install them. Battery back-up cannot work until you install the battery in the correct position (Match "+" to "+" and "-" to "-").
  - In step six, activation is a one time use only.

#### STAND-ALONE ALARM ONLY:

- If you are only installing one Alarm, restore power to the junction box.

#### INTERCONNECTED UNITS ONLY:

- If you are interconnecting multiple Alarms, repeat steps 1-6 for each Alarm in the series. When you are finished, restore power to the junction box.

- NOTES:**
- Make sure the Alarm is receiving AC power. Under normal operation, the Green power indicator light will shine continuously.
  - Test each Smoke Alarm. Press and hold the Test/Silence button until the unit alarms. When testing a series of interconnected units you must test each unit individually. Make sure all units alarm when each one is tested.

#### DANGER!

If any unit in the series does not alarm, **TURN OFF POWER** and recheck connections. If it does not alarm when you restore power, replace it immediately.

### Special Requirements For Interconnected Alarms

#### IMPORTANT:

- Failure to meet any of the requirements could damage the units and cause them to malfunction, removing your protection.
- AC and AC/DC Alarms can be interconnected. Under AC power, all units will alarm when one senses smoke or CO. When power is interrupted, only the AC/DC units in the series will continue to send and receive signals. AC only powered Alarms will not operate.

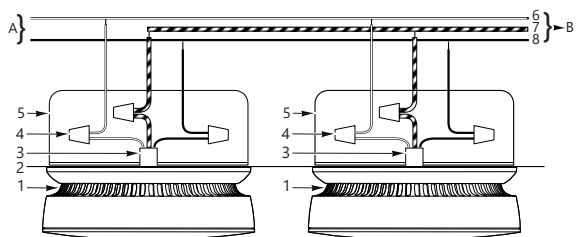
#### Compatible Interconnected Units

Interconnect units within a single family residence only. Otherwise all households will experience unwanted alarms when you test any unit in the series. Interconnected units will only work if they are wired to compatible units and all requirements are met.

Scan the QR Code to view a list of compatible interconnected units

#### Interconnected units must meet ALL of the following requirements:

- A maximum of 18 compatible units may be interconnected (Maximum of 12 Smoke Alarms).
- The same fuse or circuit breaker must power all interconnected units.
- The total length of wire interconnecting the units should be less than 1000 feet (300 meters). This type of wire is commonly available at Hardware and Electrical Supply stores.
- All wiring must conform to all local electrical codes and NFPA 70 (NEC). Refer to NFPA 72, NFPA 101, and/or your local building code for further connection requirements.



- A. Unswitched 120VAC 60 Hz source  
B. To additional units; Maximum = 18 total (Maximum 12 Smoke Alarms)
- |                    |                        |                               |
|--------------------|------------------------|-------------------------------|
| 1. Alarm           | 4. Wire Nut            | 7. Interconnect Wire (Orange) |
| 2. Ceiling or Wall | 5. Junction Box        | 8. Hot Wire (Bik)             |
| 3. Power Connector | 6. Neutral Wire (Whit) |                               |

### Locking Feature (Optional)

The locking feature is designed to discourage unauthorized access to the alarms battery compartment. It is not necessary to activate the lock in single-family households where unauthorized battery or Alarm removal is not a concern.

**Models with Non-Replaceable Batteries:** This alarm is shipped from the factory with the battery drawer locked because it features a 10-year battery backup. Under normal conditions you should not have to replace the battery for the life of the alarm.

**Models with Replaceable Batteries:** If you need to replace the battery follow "Removing The Battery Compartment Lock" below. Re-lock Battery Compartment if desired.

#### Tools you will need:

- Needle-nose pliers or utility knife
- Standard flathead screwdriver



**Removing The Battery Compartment Lock**  
**IMPORTANT:** Once the Alarm is installed, you must disconnect it from the AC power before unlocking the battery compartment.

#### DANGER!

**ELECTRICAL SHOCK HAZARD**  
Turn off the power to the area where the Alarm is installed before removing it from the mounting bracket. Failure to turn off the power first may result in serious electrical shock, injury or death.

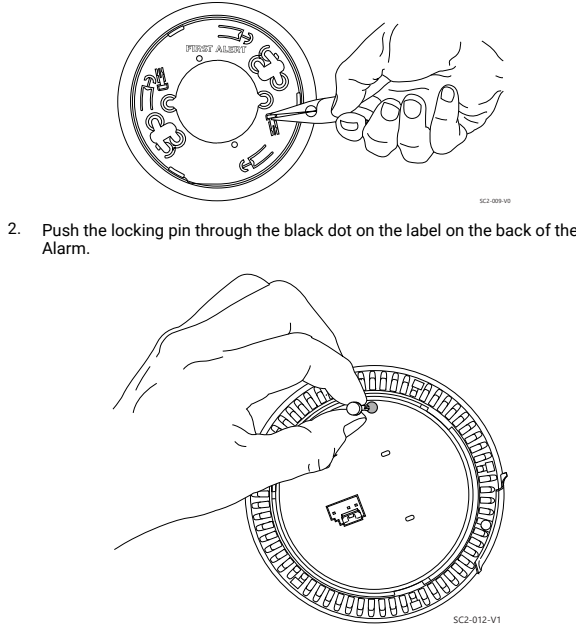
- Remove the Alarm from the mounting bracket.
- Disconnect the power connector by gently prying it away from the back of the Alarm.
- Score the area around the locking pin with a utility knife. The locking pin uses locking pins, molded into the mounting bracket. Using needle nose pliers or a utility knife, remove the pin.
- To re-lock the battery compartment, close the battery door and reinsert the locking pin in the lock.
- Reconnect the power connector to the back of the Alarm, reattach the Alarm to the mounting bracket, and restore the power.

**NOTE:** When replacing the battery, always test the Alarm before re-locking the battery compartment.

### To Lock The Battery Compartment

**NOTE:** Do not lock the battery compartment until you have activated the battery and tested the battery backup.

- Using needle-nose pliers or a utility knife, detach one locking pin from the mounting bracket.



### 03 Operation

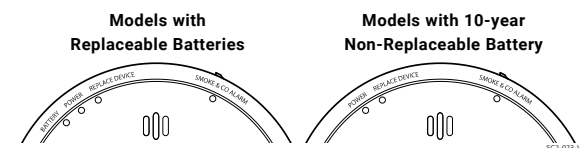
#### How Your Smoke & Smoke/CO Alarm Works

- Test/Silence Button: Press and hold to activate test, or to silence alarm.
- SMOKE & CO LED
- BATTERY\*, POWER, and REPLACE DEVICE LED
- Battery Compartment
- (Behind the cover) Alarm Horn: 85 dB audible alarm for test, alarm, and unit malfunction warning.

\* BATTERY LED only exists on models with replaceable batteries.

**NOTE:** Smoke detectors are not used with detector guards unless the combination has been evaluated by the Listing agency and approved for use.

### What You Will See & Hear With This Alarm



What You Will Hear	What you will See	Mode of Operation
None	Constant Green (AC) Green Flash (DC)	Normal Operation
3 beeps, pause, 3 beeps	Flashes Red	Smoke Alarm Test
4 beeps, pause, 4 beeps	Flashes Red	CO Alarm Test
Soft, descending 6 tone beep	Flashes Yellow every 2 seconds until the true low-battery cycle occurs or the unit is replaced.	Low Battery, Pre-Warning
1 chirp every minute	1 yellow flash in sync with the horn pattern; followed by 1 yellow flash every 6 seconds	Low or Missing Battery
3 chirps every minute	3 yellow flashes in sync with the horn pattern; followed by 3 yellow flashes every 6 seconds	If Alarm is Not Operating Properly (MALFUNCTION SIGNAL)
Soft, descending 6 tone beep	5 yellow flashes every 6 seconds until the true End of Life cycle occurs or the unit is replaced	End of Life, Pre-Warning
5 chirps every minute	5 yellow flashes in sync with the horn pattern; followed by 5 yellow flashes every 6 seconds	Alarm has reached its End of Life
4 beeps, pause, 4 beeps*	Flashes Red in sync with the horn pattern. After Alarm: Flashes Red On for 4 seconds. CO alarm latch is now engaged.	Alarm Levels of CO are Detected
3 beeps, pause, 3 beeps	Flashes Red in sync with the horn pattern. After Alarm: Flashes Red On for 2 seconds/Off for 2 seconds. Smoke alarm latch is now engaged.	Smoke is Detected
None	Flashes Red	Smoke Alarm is Silenced
None	Flashes Red	CO Alarm is Silenced
None	Flashes Yellow	Alarm needs cleaning

\* If unit goes into CO Alarm, the regular 4 beeps brief pause cycle will repeat for 15 minutes. After 15 minutes the pause will increase to one minute.

### If Your Smoke & Smoke/CO Alarm Sounds

#### What To Do First - Identify The Type Of Alarm Signal

Type of Alarm	What You Will See & Hear
Carbon Monoxide (CO)	Horn: 4 beeps, pause, 4 beeps, pause; Alarm LED: Flashes Red
Smoke	Horn: 3 beeps, pause, 3 beeps, pause; Alarm LED: Flashes Red

### If The CO Alarm Sounds (4 Beeps):

#### WARNING!

**ACTUATION OF THIS DEVICE INDICATES THE PRESENCE OF CARBON MONOXIDE (CO) WHICH CAN KILL YOU. IF ALARM SOUNDS 4 BEEPS:**

- IMMEDIATELY MOVE TO FRESH AIR - OUTDOORS OR BY AN OPEN DOOR OR WINDOW. CHECK THAT ALL PERSONS ARE ACCOUNTED FOR. DO NOT RE-ENTER THE PREMISES OR MOVE AWAY FROM THE OPEN DOOR/WINDOW UNTIL THE EMERGENCY SERVICES RESPONDERS HAVE ARRIVED. THE PREMISES HAVE BEEN AIRED OUT, AND YOUR ALARM RETURNS TO ITS NORMAL CONDITION.**
- CALL YOUR EMERGENCY LOCAL SERVICE, FIRE DEPARTMENT OR 911. Write down the number of your local emergency service here\_\_\_\_\_
- Press the Test/Silence button.
- After following steps 1-3, if your CO Alarm reactivates within a 24-hour period, repeat steps 1-3 and call a qualified appliance technician to investigate for sources of CO from fuel-burning equipment and appliances, and inspect for proper operation of this equipment. If problems are identified during this inspection have the equipment serviced immediately. Note any combustion equipment not inspected by the technician, and consult the manufacturers' instructions, or contact the manufacturers directly, for more information about CO safety and this equipment. Make sure that motor vehicles are not, and have not, been operating in any attached garage or near the residence. Write down the number of a qualified appliance technician here:\_\_\_\_\_

### If The Smoke Alarm Sounds (3 Beeps):

**If you hear the alarm horn sound 3 beeps, pause, 3 beeps, pause and the RED SMOKE light is flashing, smoke has been detected. Evacuate everyone from the building.**

### Responding To An Alarm

#### WARNING!

- If the unit Alarms and you are not testing the unit, it is warning you of a potentially dangerous situation that requires your immediate attention. NEVER ignore any Alarm. Ignoring the Alarm may result in injury or death.
- When an interconnected system of AC powered units is in alarm, the alarm indicator light on the unit(s) that initiated the alarm will blink rapidly. It will remain OFF on any remaining units.
- If the unit alarms, get everyone out of the dwelling immediately.
- If the unit alarms and you are certain that the source of smoke is not a fire-cooking smoke or an extremely dusty furnace, for example-open a nearby window or door and fan the smoke away from the unit. Use the Silence Feature to silence the Alarm. This will silence the alarm, and once the smoke clears the unit will reset itself automatically.

### What To Do In Case Of A Fire

- Don't panic; stay calm. Follow your family escape plan.
- Get out of the house as quickly as possible.
- Feel doors with the back of your hand before opening them. If a door is cool, open it slowly. Don't open a hot door. Keep doors and windows closed, unless you must escape through them.
- Cover your nose and mouth with a cloth (preferably damp). Take short, shallow breaths.
- Meet at your planned meeting place outside your home, and do a head count to make sure everybody got out safely.
- Call the Fire Department as soon as possible from outside. Give your address, then your name.
- Never go back inside a burning building for any reason.
- Contact your Fire Department for ideas on making your home safer.

**NOTE:** Alarms have various limitations. See "General Limitations of Smoke/CO Alarms" on the next page for details.

### "Smart Interconnect" Feature

This alarm includes "Smart Interconnect" which enables the alarm to be interconnected with other First Alert & BRK Smoke, Heat, and "Smart Interconnect" CO Alarms. When smoke is detected, all alarms will sound the smoke horn pattern. When CO is detected, "Smart Interconnect" alarms will sound the CO horn pattern. Alarms that do not have the "Smart Interconnect" Feature will remain silent during a CO alarm.

### Interconnected Alarms

Interconnected units can provide earlier warning of fire than stand-alone units, especially if a fire starts in a remote area of the dwelling. If any unit in the series senses smoke, all interconnected units will alarm. To determine which unit initiated an alarm, see table:

<b>During an Alarm:</b> On Initiating Alarms: Red LED(s) flashes (flash) rapidly On All other alarms: Red LED is Off
<b>After an Alarm (Latching):</b> On Initiating Alarms: Red LED(s) on for 2-seconds/Off for 2-seconds On All other alarms: Green LED(s) On, Red LED(s) Off

### Using The Silence Features

#### WARNING!

Never unplug the alarm or remove the batteries to quiet an unwanted Alarm. Removing the batteries disables the Alarm and removes your protection. Instead open a window or fan the smoke away from the unit. The Alarm will reset automatically.

The Silence Feature is intended to temporarily silence the horn while you identify and correct the problem. Do not use the Silence Feature in emergency situations. It will not correct a CO problem or extinguish a fire. The Silence Feature can temporarily quiet an unwanted Alarm for several minutes. You can silence this Alarm by pressing the Test/Silence button on the Alarm cover until it chirps, then release. After the Test/Silence button is released, the Red LED blinks during the silence mode. Activate the Alarm test, reset or silence function by use of a finger or thumb. Use of any other instrument is strictly prohibited.

When the Smoke Alarm is Silenced	When the CO Alarm is Silenced	Soft-tone Pre-Warning
The Smoke Alarm will remain silent for up to 10 minutes. After 10 minutes, the alarm will resume normal operation. If the smoke has not cleared-or continues to increase-the device will go back into alarm.	The CO Alarm will remain silent for up to 5 minutes. After 5 minutes, if CO levels remain potentially dangerous the alarm will start sounding again.	Notifies the end user 5-7 days prior to the actual low-battery warning.

### Silencing The Low Battery Warning

This Silence Feature can temporarily quiet the low battery warning "chirp" for up to 8 hours if AC power is present. Press the Test/Silence button on the Alarm cover until you hear the acknowledgement "chirp".

Once the low battery warning "chirp" silence feature is activated, the unit continues to flash the green light once a minute for 8 hours. After 8 hours, the low battery "chirp" will resume. The Alarm will continue to operate as long as AC power is supplied. However, replace the batteries as soon as possible, to maintain protection in event of a power outage.

#### To silence Alarms in an interconnected series:

To silence an interconnected series of Alarms, you must press the Test/Silence button on the initiating alarm (The unit with the flashing red light; the red light will be off on all other Alarms.). If you press the Test/Silence on any other Alarm, it will only silence that unit, not the whole interconnected series.

### Silencing The End Of Life Signal

This alarm is equipped with a 10-year end of life and starts when the pull tab is removed from the battery compartment.

This Silence Feature can temporarily quiet the End of Life warning "chirp" for up to 2 days. You can silence the End of Life warning "chirp" by pressing the Test/Silence button. The horn will chirp, acknowledging that the End of Life Silence Feature has been activated.

After approximately 2 days, the End of Life "chirp" will resume.

### Latching Features

Alarm Latch is activated after an Alarm is exposed to alarm levels of smoke or carbon monoxide. This feature will only work with AC power. After smoke or CO levels drop below alarm levels, the "Alarm LED" will begin to flash once every few seconds. It will continue to flash or "latch" until you clear it by testing the alarm.

This feature helps emergency responders, investigators, or service technicians identify which unit(s) in your home were exposed to alarm levels of smoke or carbon monoxide. This can help investigators pinpoint the source of smoke or CO.

**Interconnected Alarms.** Latching Alarm Indicator shows which Alarm(s) in the

To test this alarm press and release the Test/Silence button. The alarm will chirp. To exit test mode repeat these steps.

During testing, you will see and hear the following sequence:

- The **Horn** will sound 3 beeps, pause, 3 beeps. The **Alarm LED** flashes Red in sync with the horn pattern.
- Next the **Horn** will sound 4 beeps, pause, 4 beeps. The **Alarm LED** flashes Red in sync with the horn pattern.

**If the unit does not alarm, make sure the batteries are correctly installed, and test again. If the unit still does not alarm, replace it immediately.**

### Regular Maintenance

This unit has been designed to be as maintenance-free as possible, but there are a few simple things you must do to keep it working properly:

- Test it at least once a week.
- Clean the Alarm at least once a month; gently vacuum the outside of the Alarm using your household vacuum's soft brush attachment.
  - Never use water, cleaners or solvents since they may damage the unit.
  - If the Alarm becomes contaminated by excessive dirt, dust and/or grime, and cannot be cleaned to avoid unwanted alarms, replace the unit immediately.
    - NOTE:** To prevent false or nuisance alarms, the accommodating spaces are to be well ventilated when household cleaning supplies or similar contaminants are used.

### When To Change The Battery Backup (replaceable Battery Models Only)

When the battery back-up becomes weak, the Alarm will "chirp" about once a minute (the low battery warning). This warning should last 7 days, but you should replace the battery immediately to continue your protection. The Low Battery Latch feature will be engaged. LED Flashes 1 chirp per minute; 1 yellow flash in sync with the horn pattern, followed by 1 yellow flash every 6 seconds. (Low Battery Latch is engaged.)

### Choosing A Replacement Battery

Your Alarm requires two "AA" batteries: Kendall LR6, Energizer E91, or Duracell MN1500. These batteries are available at many local retail stores.

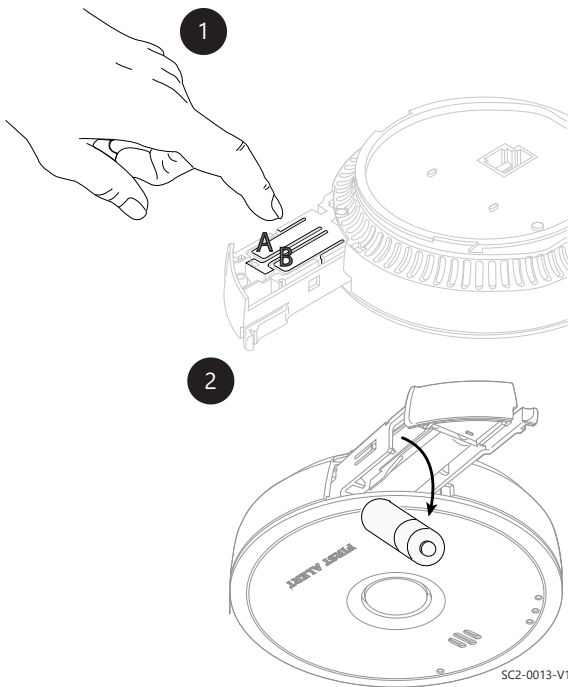
**! WARNING!**

- Always use the exact batteries specified by this Manual. DO NOT use rechargeable batteries. Install batteries correctly with regard to polarity (+ and -).
- Please dispose of or recycle used batteries properly, following any local regulations. Consult your local waste management authority or recycling organization to find an electronics recycling facility in your area. DO NOT DISPOSE OF BATTERIES IN FIRE. BATTERIES MAY EXPLODE OR LEAK.
- Keep battery out of reach of children. In the event a battery is swallowed, immediately contact your poison control center, your physician, or the National Battery Ingestion hotline at 202-625-3333 as serious injury may occur.

**NOTE:** Actual battery service life depends on the Smoke/CO Alarm and the environment in which it is installed. Constant exposure to high or low humidity can reduce battery life. All the batteries specified above are acceptable replacement batteries for this unit. Regardless of the manufacturer's suggested battery life, you MUST replace the battery immediately once the unit starts "chirping" (the "low battery warning").

### To replace the batteries (without removing Alarm from the ceiling or wall):

- Open the battery compartment by sliding the switch to the left.
- Press tabs A and B as shown in the diagram and remove each battery.
- Insert the new batteries, making sure they snap completely into the battery compartment. Match the terminals on the ends of the batteries with the terminals on the unit.
- Close the battery compartment; you will hear a click ensuring it is closed all the way, and then test the unit by pressing the Test/Silence button.



### Troubleshooting Guide

IF THE ALARM...	PROBLEM...	YOU SHOULD...
Soft, descending 6 tone beep, Yellow blinking light	Pre-warning alert for low battery.	End of Life, Pre-Warning, Install two new AA batteries*.
1 chirp per minute; 1 yellow flash in sync with the horn pattern; followed by 1 yellow flash every 6 seconds. (Low Battery Latch is engaged).	Low battery warning.	Install two new AA batteries*.
Horn sounds 3 "chirps" per minute; 3 yellow flashes in sync with the horn pattern; followed by 3 yellow flashes every 6 seconds	<b>MALFUNCTION SIGNAL.</b> Device is not working properly, and needs to be replaced.	If unit is under warranty, contact Consumer Support to process a warranty replacement.
<b>CARBON MONOXIDE ALARM ONLY</b>		
CO Alarm goes back into Alarm 5 minutes after you silence it.	CO levels indicate a potentially dangerous situation.	IF YOU ARE FEELING SYMPTOMS OF CO POISONING, EVACUATE your home and call 911 or the Fire Department. Refer to "If The CO Alarm Sounds" for details.
CO Alarm sounds frequently even though no high levels of CO are revealed in an investigation.	The CO Alarm may be improperly located. Refer to "Where to Install This Alarm" for details.	Relocate your Alarm. If frequently even though no high levels of CO are revealed in an investigation, have home rechecked for potential CO problems. You may be experiencing an intermittent CO problem.
<b>SMOKE ALARM ONLY</b>		

IF THE ALARM...	PROBLEM...	YOU SHOULD...
Smoke Alarm sounds when no smoke is visible.	Unwanted Alarm may be caused by non-emergency source like cooking smoke.	Silence Alarm using Test/Silence button; clean the Alarm's cover with a soft, clean cloth. If frequent unwanted Alarms continue, relocate your Alarm. Alarm may be too close to a kitchen, cooking appliance, or steamy bathroom.
* For a list of acceptable replacement batteries, see "Regular Maintenance" above.*		
If you have questions that cannot be answered by reading this manual, call the Consumer Support Team at 1-800-323-9005.		

### 05 Regulatory

### Agency Placement Recommendations

**Standards:** Underwriters Laboratories Inc. Single and Multiple Station Smoke Alarms 217.

### NFPA 72 CHAPTER 29

"FOR YOUR INFORMATION, THE NATIONAL FIRE ALARM AND SIGNALING CODE, NFPA 72, READS AS FOLLOWS:"

29.5.1.1\* Required Detection. 29.5.1.1\* Where required by other governing laws, codes, or standards for a specific type of occupancy, approved single and multiple-station Smoke Alarms shall be installed as follows:

- \*In all sleeping rooms and guest rooms
- \*Outside of each separate dwelling unit sleeping area, within 21 ft (6.4 m) of any door to a sleeping room, with the distance measured along a path of travel
- On every level of a dwelling unit, including basements
- On every level of a residential board and care occupancy (small facility), including basements and excluding crawl spaces and unfinished attics
- \*In living area(s) of a guest suite
- In the living area(s) of a residential board and care occupancy (small facility)

(Reprinted with permission from NFPA 72®, National Fire Alarm and Signaling Code Copyright © 2012 National Fire Protection Association, Quincy, MA 02269. This reprinted material is not the complete and official position of the National Fire Protection Association, on the referenced subject which is represented only by the standard in its entirety).

(National Fire Alarm and Signaling Code® and NFPA 72® are registered trademarks of the National Fire Protection Association, Inc., Quincy, MA 02269).

### California State Fire Marshal (CSFM)

Early warning detection is best achieved by the installation of fire detection equipment in all rooms and areas of the household as follows: A Smoke Alarm installed in each separate sleeping area (in the vicinity, but outside bedrooms), and Heat or Smoke Alarms in the living rooms, dining rooms, bedrooms, kitchens, hallways, finished attics, furnace rooms, closets, utility and storage rooms, basements, and attached garages.

### What You Need To Know About CO

**! WARNING!**

**CARBON MONOXIDE (CO) IS A COLORLESS, ODORLESS, POISONOUS GAS. YOU CAN'T TASTE, SEE, OR SMELL CO, BUT IT CAN KILL IN JUST MINUTES. THIS ALARM WILL SOUND IN A 4-BEEP PATTERN IF LIFE THREATENING LEVELS OF CO ARE DETECTED. IF THE ALARM SOUNDS:**

- 1) Immediately evacuate all occupants from the space and go outdoors to fresh air.
- 2) Call emergency responders (911 or fire department) for help; notify the building or vehicle owner, as necessary.

### What Is CO?

CO is an invisible, odorless, tasteless gas produced when fossil fuels do not burn completely, or are exposed to heat (usually fire). Electrical appliances typically do not produce CO.

Common appliances are often sources of CO. If they are not properly maintained, are improperly ventilated, or malfunction, CO levels can rise quickly.

### Symptoms Of CO Poisoning

THE FOLLOWING SYMPTOMS MIGHT BE RELATED TO CARBON MONOXIDE POISONING AND SHOULD BE DISCUSSED WITH ALL MEMBERS OF THE HOUSEHOLD:

**MILD EXPOSURE:** HEADACHES, FATIGUE, DROWSINESS, SHORTNESS OF BREATH, "FLU"-LIKE SYMPTOMS (WITHOUT FEVER), AND IMPAIRED MOTOR FUNCTIONS(LIKE DIFFICULTY WALKING OR PROBLEMS WITH BALANCE);

**MEDIUM EXPOSURE:** DIZZINESS, NAUSEA AND VOMITING, CHEST PAIN, POOR VISION, DIFFICULTY THINKING;

**EXTREME EXPOSURE:** LOSS OF CONSCIOUSNESS, CONVULSIONS, COMA, AND DEATH.

WHEN FLU-LIKE SYMPTOMS WITH FEVER ARE EXPERIENCED, ENSURE THAT THE POSSIBILITY OF POISONING IS NOT AUTOMATICALLY RULED OUT. MANY CASES OF REPORTED CARBON MONOXIDE POISONING INDICATE THAT WHILE VICTIMS ARE AWARE THEY ARE NOT WELL, THEY BECOME SO DYSORIENTED THEY ARE UNABLE TO SAVE THEMSELVES BY EITHER EXITING THE BUILDING OR CALLING FOR ASSISTANCE.

**! WARNING!**

This CO Alarm measures exposure to CO over time. It alarms if CO levels are extremely high in a short period of time, or if CO levels reach a certain minimum over a long period of time. The CO Alarm generally sounds an alarm before the onset of symptoms in average, healthy adults. Why is this important? Because you need to be warned of a potential CO problem while you can still react in time. If you experience even mild symptoms of CO poisoning, consult your doctor immediately or call 911 to get help!

### Finding The Source Of CO After An Alarm

Carbon monoxide is an odorless, invisible gas, which often makes it difficult to locate the source of CO after an alarm. These are a few of the factors that can make it difficult to locate sources of CO:

- House well ventilated before the investigator arrives.
- Problem caused by "backdrafting."
- Transient CO problem caused by special circumstances.

Because CO may dissipate by the time an investigator arrives, it may be difficult to locate the source of CO. **Resideo shall not be obligated to pay for any carbon monoxide investigation or service call.**

### Potential Sources Of CO In The Home

**Fuel-burning appliances** like: portable heater, gas or wood burning fireplace, gas kitchen range or cooktop, gas clothes dryer.

**Damaged or insufficient venting:** corroded or disconnected water heater vent pipe, leaking chimney pipe or flue, or cracked heat exchanger, blocked or clogged chimney opening.

**Improper use of appliance/device:** operating a barbecue grill or vehicle in an enclosed area (like a garage or screened porch).

**Transient CO Problems:** "transient" or on-again-off-again CO problems can be caused by outdoor conditions and other special circumstances.

The following conditions can result in transient CO situations:

- Excessive spillage or reverse venting of fuel appliances caused by outdoor conditions such as:
  - Wind direction and/or velocity, including high, gusty winds.
  - Heavy air in the vent pipes (cold/humid air with extended periods between cycles).
- Negative pressure differential resulting from the use of exhaust fans.
- Several appliances running at the same time competing for limited fresh air.
- Vent pipe connections vibrating loose from clothes dryers, furnaces, or water heaters.
- Obstructions in or unconventional vent pipe designs which can amplify the above situations.

- Extended operation of unvented fuel burning devices (range, oven, fireplace).
- Temperature inversions, which can trap exhaust close to the ground.
- Car idling in an open or closed attached garage, or near a home.

These conditions are dangerous because they can trap exhaust in your home. Since these conditions can come and go, they are also hard to recreate during a CO investigation.

### How Can I Protect My Family From CO Poisoning?

A CO Alarm is an excellent means of protection. It monitors the air and sounds a loud alarm before Carbon Monoxide levels become threatening for average, healthy adults.

A CO Alarm is not a substitute for proper maintenance of home appliances.

To help prevent CO problems and reduce the risk of CO poisoning:

- Clean chimneys and flues yearly. Keep them free of debris, leaves, and nests for proper air flow. Also, have a professional check for rust and corrosion, cracks, or separations.
- Test and maintain all fuel-burning equipment annually. Many local gas or oil companies and HVAC companies offer appliance inspections for a nominal fee.
- Check the house or garage on the other side of shared wall.
- Keep windows and doors open slightly. If you suspect that CO is escaping into your home, open a window or a door. Opening windows and doors can significantly decrease CO levels.

In addition, familiarize yourself with all enclosed materials. Read the manual(s) in its entirety, and make sure you understand what to do if your CO Alarm sounds.

### Regulatory Information For CO Alarms

#### What Levels Of CO Cause An Alarm?

Underwriters Laboratories Inc. Standard UL2034 requires residential CO Alarms to sound when exposed to levels of CO and exposure times as described below. The alarm is measured in parts per million (ppm) of CO over time (in minutes).

UL2034 Required Alarm Points\*:

- If the Alarm is exposed to 400 ppm of CO, IT MUST ALARM BETWEEN 4 and 15 MINUTES.
- If the Alarm is exposed to 150 ppm of CO, IT MUST ALARM BETWEEN 10 and 50 MINUTES.
- If the Alarm is exposed to 70 ppm if CO, IT MUST ALARM BETWEEN 60 and 240 MINUTES.

\* Approximately 10% COHb exposure at levels of 10% to 95% Relative Humidity (RH).

The unit is designed not to Alarm when exposed to a constant level of 30 ppm for 30 days.

**! WARNING!**

CO Alarms are designed to Alarm before there is an immediate life threat. Since you cannot see or smell CO, never assume it's not present.

- An exposure to 100 ppm of CO for 20 minutes may not affect average, healthy adults, but after 4 hours the same level may cause headaches.
- An exposure to 400 ppm of CO may cause headaches in average, healthy adults after 35 minutes, but can cause death after 2 hours.

**Standards:** Underwriters Laboratories Inc. Single and Multiple Station Carbon Monoxide Alarms UL2034.

According to Underwriters Laboratories Inc. UL2034, Section 1-1. 2: "Carbon monoxide Alarms covered by these requirements are intended to respond to the presence of carbon monoxide from sources such as, but not limited to, exhaust from internal-combustion engines, abnormal operation of fuel-fired appliances, and fireplaces. CO Alarms are intended to Alarm at carbon monoxide levels below those that could cause a loss of ability to react to the dangers of carbon monoxide exposure." This CO Alarm monitors the air at the Alarm, and is designed to Alarm before CO levels become life threatening. This allows you precious time to leave the house and correct the problem. This is only possible if Alarms are located, installed, and maintained as described in this manual.

**Gas Detection at Typical Temperature and Humidity Ranges:** The CO Alarm is not formulated to detect CO levels below 30 ppm typically. UL tested for false Alarm resistance to Methane (500 ppm), Butane (300 ppm), Heptane (500 ppm), Ethyl Acetate (200 ppm), Isopropyl Alcohol (200 ppm) and Carbon Dioxide (5000 ppm). Values measure gas and vapor concentrations in parts per million.

### Special Compliance Considerations

This Smoke Alarm is suitable for use in apartments, condominiums, townhouses, hospitals, day care facilities, health care facilities, boarding houses, group homes and dormitories provided a primary fire detection system already exists to meet fire detection requirements in common areas like lobbies, hallways, or porches. Using this Smoke Alarm in common areas may not provide sufficient warning to all residents or meet local fire protection ordinances/regulations.

This Smoke Alarm alone is not a suitable substitute for complete fire detection systems in places housing many people—like apartment buildings, condominiums, hotels, motels, dormitories, hospitals, health care facilities, nursing homes, day care facilities, or group homes of any kind. It is not a suitable substitute for complete fire detection systems in warehouses, industrial facilities, commercial buildings, and special-purpose non-residential buildings which require special fire detection and Alarm systems. Depending on the building codes in your area, this Smoke Alarm may be used to provide additional protection in these facilities.

In new construction, most building codes require the use of AC or AC/DC powered Smoke Alarms only. In existing construction, AC, AC/DC, or DC powered Smoke Alarms can be used as specified by local building codes. THIS EQUIPMENT SHOULD BE INSTALLED IN ACCORDANCE WITH THE NATIONAL FIRE PROTECTION ASSOCIATION'S STANDARD 72 (National Fire Protection Association, Batterymarch Park, Quincy, MA 02269). Refer to NFPA 701 (Life Safety Code), local building codes, or consult your Fire Department for detailed fire protection requirements in buildings not defined as "households".

### FCC Compliance

This equipment has been tested and found to comply with the limits for a Class B digital device, pursuant to Part 15 of the FCC rules. These limits are designed to provide reasonable protection against harmful interference in a residential installation. This equipment generates, uses and can radiate radio frequency energy and, if not installed and used in accordance with the instructions, may cause harmful interference to radio communications.

However, there is no guarantee that the interference will not occur in a particular installation. If this equipment does cause harmful interference to radio or television reception, which can be determined by turning the equipment off and on, the user is encouraged to try to correct the interference by one or more of the following measures:

- Reorient or relocate the receiving antenna.
- Increase the separation between the equipment and receiver.
- Connect the equipment into an outlet on a circuit different from that of the receiver.
- Consult the dealer or an experienced radio or TV technician for help.

**! WARNING!**

Changes or modifications to the product, not expressly approved by First Alert, could void the user's authority to operate the equipment.

Responsible Party / Issuer of Supplier's Declaration of Conformity: Resideo Technologies, Inc., 16100 N 71st Street, Scottsdale, AZ 85254, Ph: 480-573-5340

This Class B digital apparatus complies with Canadian ICES-003.

### General Limitations Of Smoke/CO Alarms

**! WARNING!**

THIS PRODUCT IS INTENDED FOR USE IN ORDINARY INDOOR RESIDENTIAL AREAS. IT IS NOT DESIGNED TO MEASURE COMPLIANCE WITH COMMERCIAL AND INDUSTRIAL STANDARDS. IT IS NOT DESIGNED TO MEASURE CO LEVELS IN COMPLIANCE WITH OCCUPATIONAL SAFETY AND HEALTH ADMINISTRATION (OSHA) COMMERCIAL OR INDUSTRIAL STANDARDS. THIS DEVICE IS DESIGNED TO PROTECT INDIVIDUALS FROM THE ACUTE EFFECTS OF CARBON MONOXIDE EXPOSURE. IT WILL NOT FULLY SAFEGUARD INDIVIDUALS WITH SPECIFIC MEDICAL CONDITIONS. IF IN DOUBT CONSULT A MEDICAL PRACTITIONER.

**Smoke/CO Alarms may not waken all individuals.** Practice the escape plan at least twice a year, making sure that everyone is involved – from kids to grandparents. Allow children to master fire escape planning and practice before holding a fire drill at night when they are sleeping. If children or others do not readily waken to the sound of the Smoke/CO Alarm, or if there are infants or family members with mobility limitations, make sure that someone is assigned to assist them in fire drill and in the event of an emergency. It is recommended that you hold a fire drill while family members are sleeping in order to determine their response to the sound of the Smoke/CO Alarm while sleeping and to determine whether they may need assistance in the event of an emergency.

**Smoke/CO Alarms cannot work without power.** Battery operated units cannot work if the batteries are missing, disconnected or dead, if the wrong type of batteries are used, or if the batteries are not installed correctly. AC units cannot work if the AC power is cut off for any reason (open fuse or circuit breaker, failure along a power line or at a power station, electrical fire that burns the electrical wires, etc.). If you are concerned about the limitations of battery or AC power, install both types of units.

**This Smoke/CO Alarm will not sense smoke or CO that does not reach the sensors.** It will only sense smoke or CO at the sensor. **Smoke or CO may be present in other areas.** Doors or other obstructions may affect the rate at which CO or smoke reaches the sensors. If bedroom doors are usually closed at night, we recommend you install an Alarm device (Combination CO and Smoke Alarm, or separate CO Alarms and Smoke Alarms) in each bedroom and in the hallway between them.

**This Smoke/CO Alarm may not sense smoke or CO on another level of the home.** Recommended minimum protection is one Alarm device in every sleeping area, every bedroom, and on every level of your home. Some experts recommend battery powered smoke alarm be used in conjunction with interconnected AC powered Smoke Alarms. For details, see "ABOUT SMOKE ALARMS" online for details.

**Smoke/CO Alarms may not be heard.** The Alarm horn loudness meets or exceeds current UL standards of 85 dB at 10 feet (3 meters). However, if the Smoke/CO Alarm is installed outside the bedroom, it may not wake up a sound sleeper or one who has recently used drugs or has been drinking alcoholic beverages. This is especially true if the door is closed or only partly open. Noise from traffic, stereo, radio, television, air conditioner, or other appliances may also prevent alert persons from hearing the Alarm horn. This Smoke/CO Alarm is not intended for people who are hearing impaired.

**NOTE:** Individuals with medical problems may consider using warning devices which provide audible and visual signals for carbon monoxide concentrations under 30 ppm.

**! DANGER!**

**The Alarm may not have time to Alarm before the fire itself causes damage, injury, or death, since smoke from some fires may not reach the unit immediately. Examples of this include persons smoking in bed, children playing with matches, when a person's clothing catches fire while cooking, fires caused by violent explosions resulting from escaping gas, or incendiary fires where the fire grows so rapidly that an occupant's egress is blocked even with properly located Smoke Alarms.**

**This Smoke/CO Alarm is not a substitute for life insurance.** Though this Smoke/CO Alarm warns against increasing CO levels or the presence of smoke, First Alert does not warrant or imply in any way that they will protect lives. Homeowners and renters must still insure their lives.

**This Smoke/CO Alarm has a limited life.** Although this Smoke/CO Alarm and all of its parts have passed many stringent tests and are designed to be as reliable as possible, any of these parts could fail at any time. Therefore, you must test this device weekly. The unit should be replaced immediately if it is not operating properly.

**This Smoke/CO Alarm is not foolproof.** Like all other electronic devices, this Smoke/CO Alarm has limitations. It can only detect smoke or CO that reaches the sensors. It may not give early warning of the source of smoke or CO is in a remote part of the home, away from the Alarm device.

### Evacuation Planning

Establish and regularly practice a plan of escape in the event of fire. The following steps are recommended by the National Fire Protection Association:

- Position your detector or your interior and/or exterior sounders so that they can be heard by all occupants.
- Determine two means of escape from each room. One path of escape should lead to the door that permits normal exit from the building. The other may be a window, should your path be impassable. Station an escape ladder at such windows if there is a long drop to the ground.
- Sketch a floor plan of the building. Show windows, doors, stairs and rooftops that can be used to escape. Indicate escape routes for each room. Keep these routes free from obstruction and post copies of the escape routes in every room.
- Assure that all bedroom doors are shut while you are asleep. This will prevent deadly smoke from entering while you sleep.
- Try the door. If the door is hot, check your alternate escape route. If the door is cool, open it cautiously. Be prepared to slam the door if smoke or heat rushes in.
- When smoke is present, crawl on the ground. Do not walk upright, since smoke rises and may overcome you. Clearer air is near the floor.
- Escape quickly, don't panic. Establish a common meeting place outdoors, away from your house, where everyone can meet and then take steps to contact the authorities and account for those missing. Choose someone to assure that nobody returns to the house - many die going back.

### Specifications

#### ELECTRICAL SPECIFICATIONS

**AC Power** 120VAC @ 60Hz, 0.7A

**Battery (replaceable)** Two (2) - AA Batteries

**Battery Manufacturer** Kendall LR6, Energizer E91, or Duracell MN1500

#### Battery (non-replaceable)

**Sensitivity** UL/ULC limits 2.4%/ft. obs ± 25%

**Audible Signal** 3 Pulse Temporal (Smoke) & 4 Pulse (CO)

**Audible Alarm** 85 dB minimum at 10 feet (3 meters)

#### PHYSICAL SPECIFICATIONS

**Dimensions** 5 in. (127mm) Diameter x 1.77 in (45mm) Depth

**Trim Ring** 5.6 in. (142.2mm) Diameter

**Weight (including batteries)**

Model	Without Trim Ring	With Trim Ring (18.6g)
SC2-W10 / SC2-W10A	208g	226.6g
SC2-W01 / SC2-W01A	254.7g	273.3g
SM2-W10 / SM2-W10A	197.2g	215.8g
SM2-W01 / SM2-W01A	243.6g	262.2g

**Operating Temperature** 40° - 100° F (4.4° - 38° C)

**Storage Temperature Range** 14 - 158° F (-10 - 70° C)

**Operating Humidity Range** 20-95% RH (Agency Compliance – 93% max.) non-condensing

#### APPROVAL LISTINGS

FCC/IC, Conforms to: UL 217 & UL 2034, Canada: CSA6-19

Any attempt to reverse-engineer this device by decoding proprietary protocols, de-compiling firmware, or any similar actions is strictly prohibited.

The product should not be disposed of with other household waste. Check for the nearest authorized collection centers or authorized recyclers. The correct disposal of end-of-life equipment will help prevent potential negative consequences for the environment and human health.

### 06 Limited Warranty

For warranty information, please go to: <https://resideo.info/US-Warranty-FA-Safety>



To receive a printed version of the warranty, call Resideo Customer Service at 1-800-323-9005 and a copy will be mailed to you free of charge.

#### For your records, please record:

Date Purchased: \_\_\_\_\_ / \_\_\_\_\_ / \_\_\_\_\_

Where Purchased: \_\_\_\_\_

Date Installed (Month/Year): \_\_\_\_\_ / \_\_\_\_\_

Replace alarm 10 years after installation. Please write the date in the space provided: \_\_\_\_\_ Month/Year

The alarm will also provide an audible End-of-Life Signal approximately 10 years after installation to remind you to replace the unit.

Printed in Mexico  
900-00658-001-00 K1  
07/26



Intertek

3055574

Certified to

CAN/ULC STD S531 & UL STD 2034

CSA STD 6.19-17



Intertek

3055574

Conforms to UL STD 217

& UL STD 2034

CSA STD 6.19-17

© 2026 Resideo Technologies, Inc. All rights reserved. These products are manufactured by Resideo Technologies, Inc. and its affiliates - Scottsdale, AZ 85254 - Canada - www.firstalert.ca / US - www.firstalert.com.