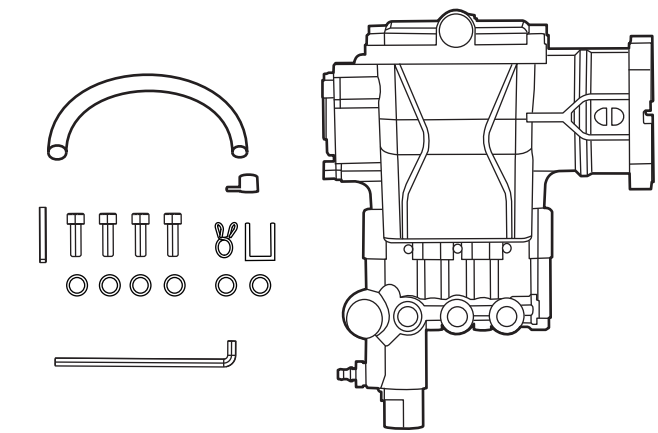
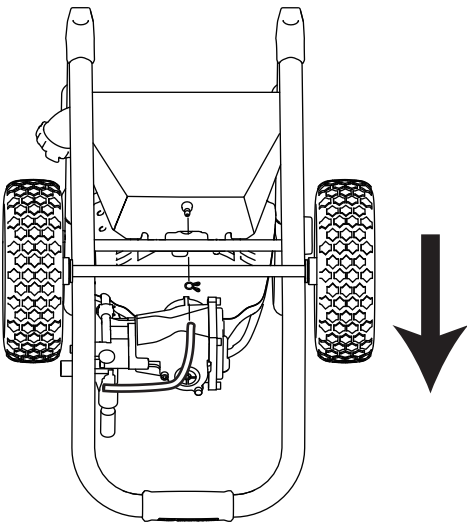


TRIPLEX PUMP

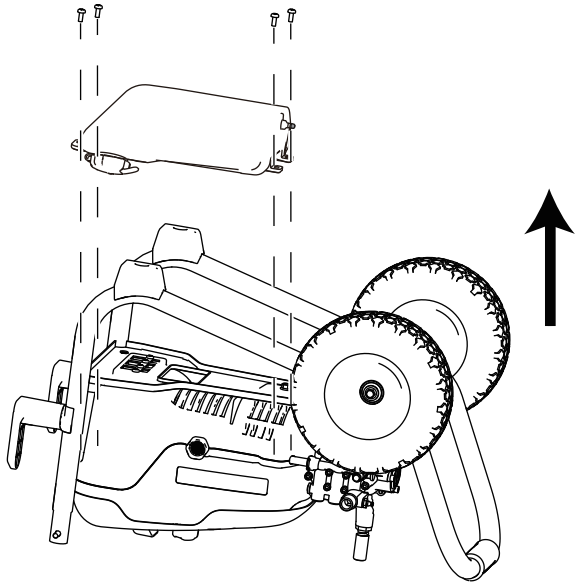


Depending on the model purchased, packaging will contain different accessories and parts. Refer to the package for more details.

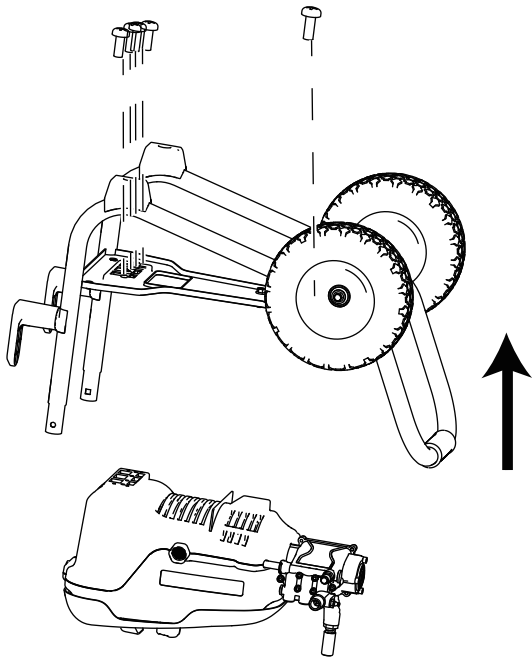
DISASSEMBLE  
Remove the suction hose connector



1  
Remove the detergent tank  
Remove (4) M6 screws

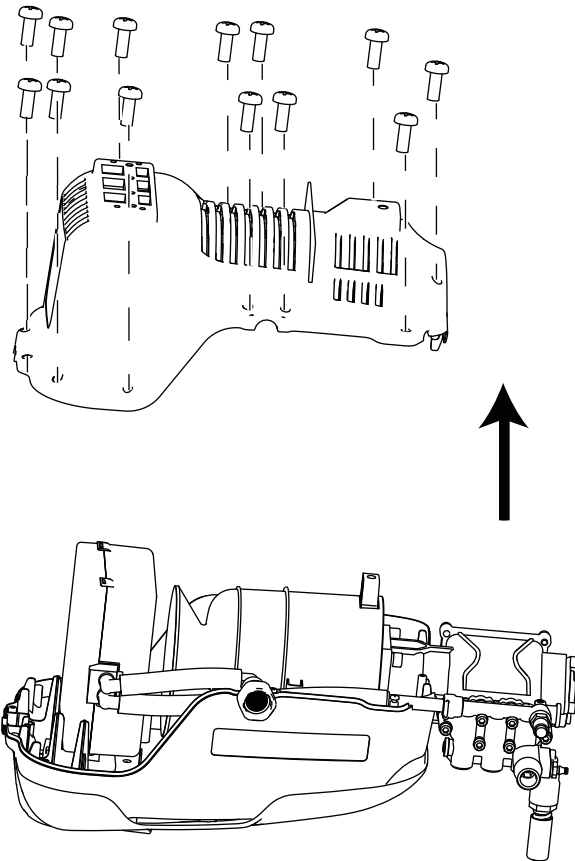


2  
Remove the lower bracket  
Remove (1) M8 screws and (4) ST5.5 screws

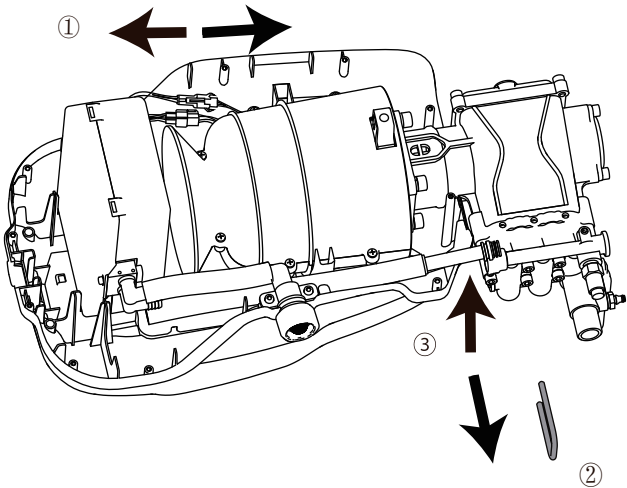


Scan the QR code to watch the operate video

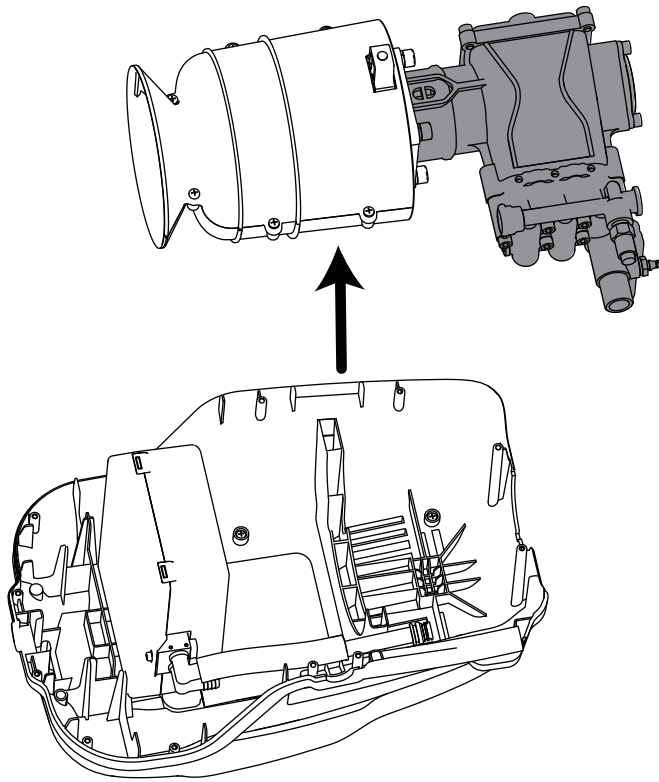
Remove the lower cover  
Remove (13) ST4.2 screws



4  
Disconnect the cable  
Remove the pin and unplug the hose  
Disconnect black 2-pin NTC cable and white motor cable  
Remove U-shaped pin and unplug water inlet hose



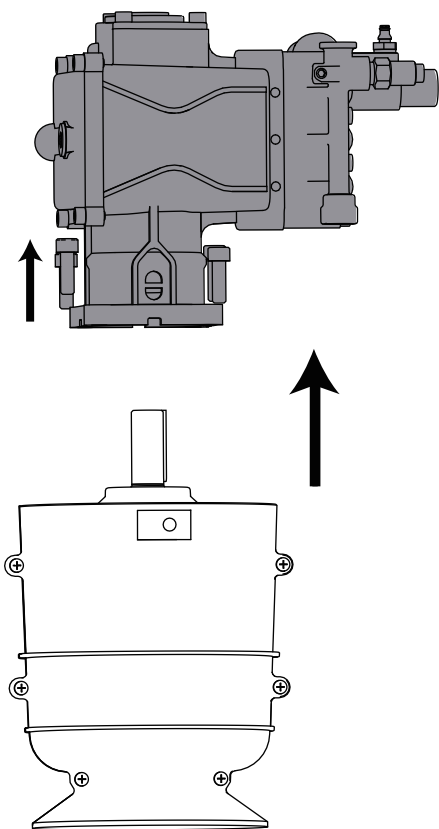
5  
Take out the pump



7

### Lift the triplex pump

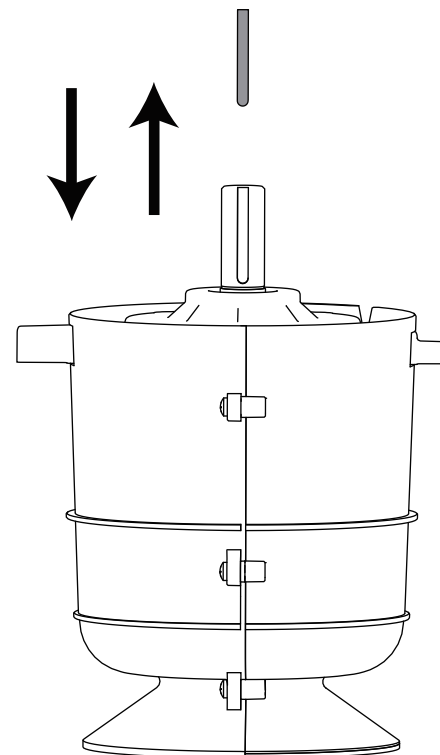
Remove (4) M8 screws  
NOTE: Pry out the pump with a flathead screwdriver if necessary.



8

### Change the feather key

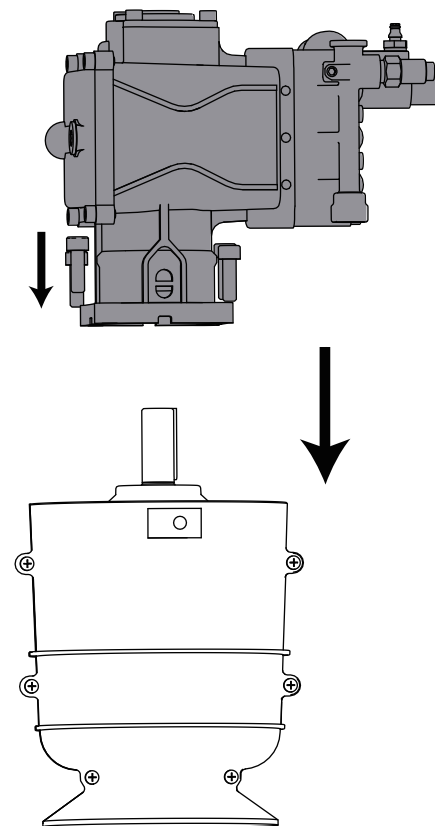
Insert new feather key



## INSTALLATION

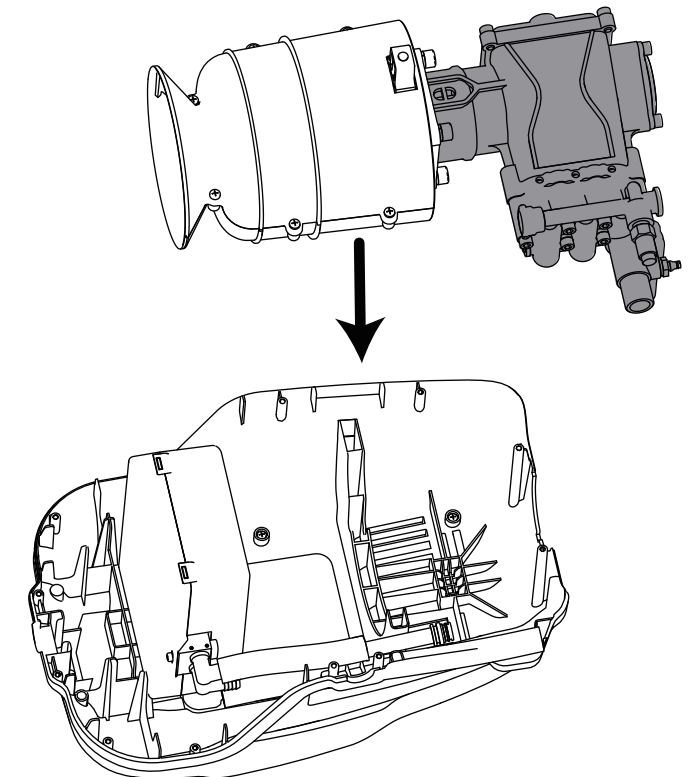
### Install the triplex pump

Secure pump with (4) new M8 screws



9

### Place the pump into the casing



10

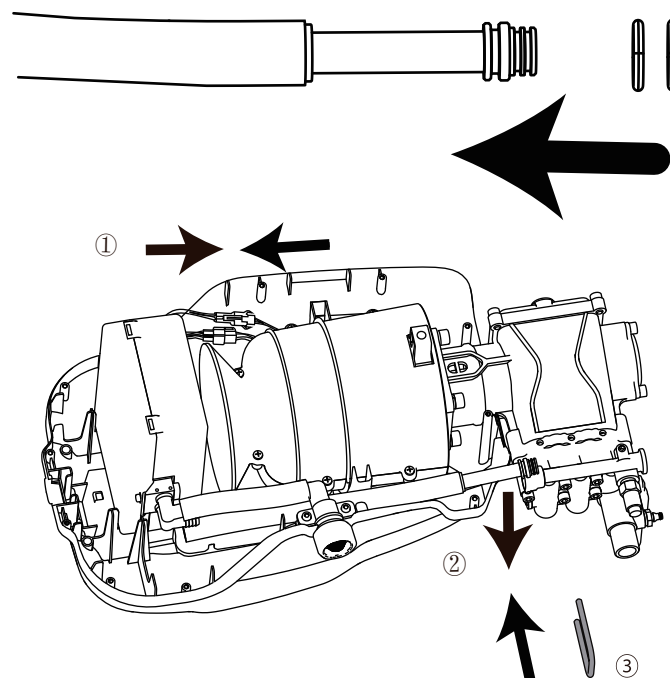
11

### Reconnect the cable

### Replace the O-rings and plug the hose

### Replace the pin

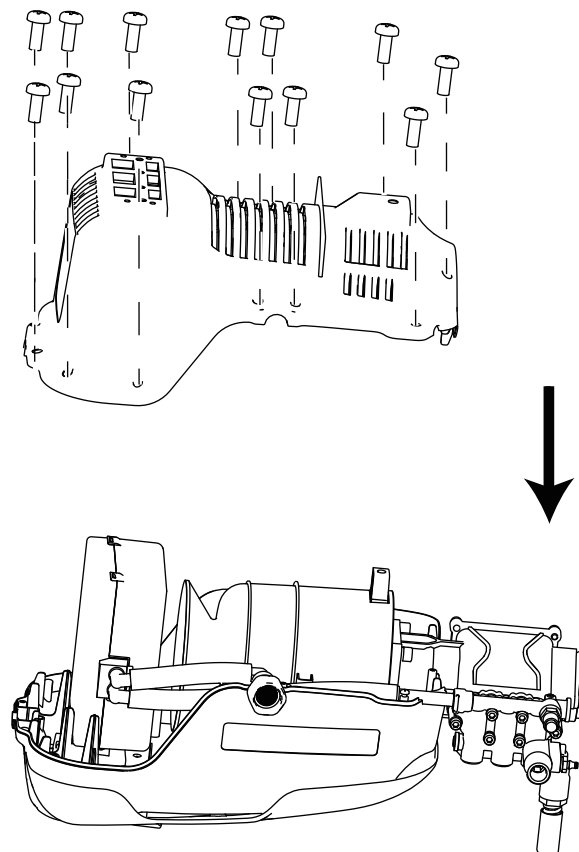
Reconnect black 2-pin NTC cable and white motor cable  
Plug water inlet hose and replace new U-shaped pin



12

### Install the lower cover

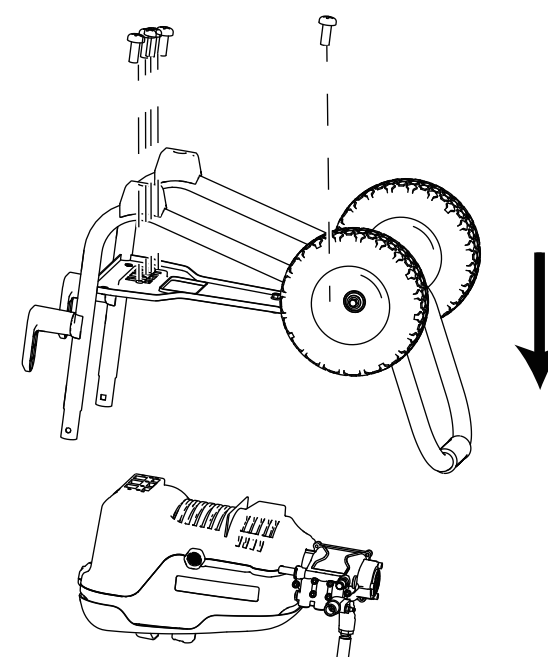
Secure lower cover with (13) ST4.2 screws



13

### Install the lower bracket

Secure lower bracket with (1) M8 screws and (4) ST5.5 screws



14

### Install the detergent tank

Secure detergent tank with (4) M6 screws

