



# KINGSMAN HARDWARE

## Instructions for Farmhouse Apron Sink Installation

### **Before Installation:**

Read installation and maintenance instructions prior to installation. Inspect your sink for any noticeable damage before installation. Examine all local applicable plumbing and building codes.

Instructions are based on application to composite material or solid surface countertop installation only; other countertop applications such as stone, marble, granite or butcher-block should be left to experienced countertop fabricator for custom installation.

Kingsman Farmhouse series sinks are hand-crafted and it is suggested to use experienced installers for the sink installation. For custom cutting of countertop and installation of sink, on-site installation is recommended. Acceptable variances are approximately 1/2 inch. Alignment to cut-out and precise application and trimming of any adhesive sealant are important to the ideal fit and finished look of the sink. Please be cautious in this regard.

Kingsman Farmhouse series sinks require custom order cabinets. Consult your cabinet dealer.

Kingsman does not accept any liability for damage to countertop, sink fixture, faucets or personal injury during the installation process. Warranty is void if installation instructions are not followed.

### **Required Tools and Materials:**

- |                             |                       |                    |
|-----------------------------|-----------------------|--------------------|
| ▪ Measuring Tape            | ▪ Denatured Alcohol   | ▪ Wood Brackets    |
| ▪ Pencil (Avoid ink)        | ▪ Ear Plugs/ Earmuffs | ▪ Carpenter Square |
| ▪ Silicone Adhesive Sealant | ▪ Safety Glasses      | ▪ Contractor Shims |
| ▪ Rags                      | ▪ Hacksaw/Jigsaw      |                    |

## Step by Step Installation:

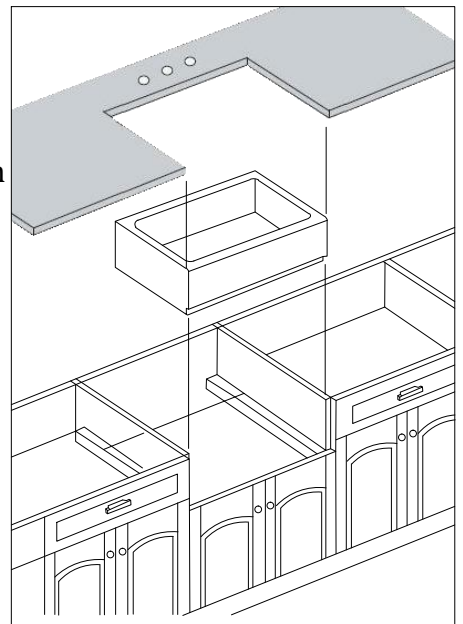
### 1. Preparing the sink base cabinet

Farmhouse sinks require custom order sink base cabinets with a front cutout to accommodate a 10 inch deep sink. First, build structural supports on the inside frame of the sink base cabinet. The structural supports must bear the weight of sink and any attachments such as garbage disposals. When the sink is placed onto the cabinet support, make sure the top of sink is even against the bottom of countertop. Please allow room for water supply line and drains or garbage disposal, as necessary.

### 2. Creating the template and cutout

Depending on the installation option, make proper cutout of the countertop. Kingsman recommends a 1/4 inch reveal on 3 sides when installing **undermount style**. For a **flush mount** or **above counter style** installation, cut countertop along with outside of sink profile. Front end of the Kingsman Farmhouse sinks are designed to be installed

3/4 inch extended out beyond the front end of countertop. Cut countertop accordingly and note that no template will be provided due to the custom nature of each application and installation. The actual sink is used as the template guide for each installation. After centering the sink and leaving room for faucets & backsplashes, use a pencil to outline the sinks as your guide for the cutout, allowing for any reveal before the actual cutting.



### 3. Setting the sink

Set the sink on top of the cabinet or into the cabinet front cutout. Apply sealant if necessary as a gasket between the sink and cabinet.

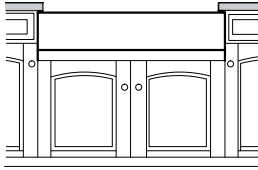
### 4. Installing the countertop

Carefully clean bottom of countertop and top flange of the sink with denatured alcohol. Apply bead of silicone adhesive (not supplied) around the top edge of sink. Place countertop onto the sink. Remove excess sealant from the lip of any surfaces with a cleaner recommended by manufacture of adhesive sealant.

## Installation Options:

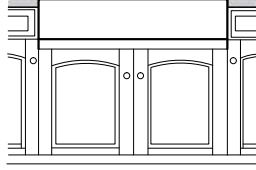
Kingsman Farmhouse series sinks offer 3 installation options depending on the design.

Undermount Installation



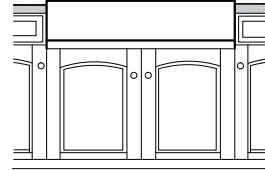
**Figure 1**

Flush mount Installation



**Figure 2**

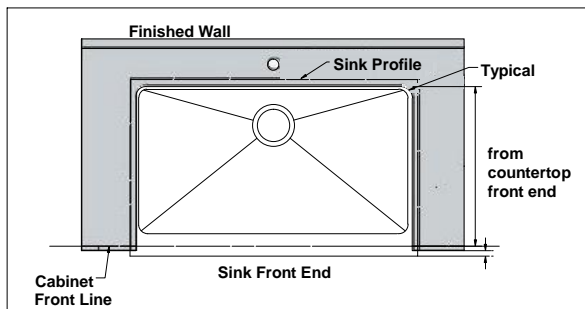
Above counter Installation



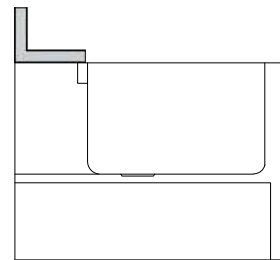
**Figure 3**

Note: All installation types need to allow room for faucet installation. Leave sufficient space behind sink for any faucet and backsplash, as well as full range of motion for faucet spouts and handles.

Regular undermount installation with 1/4 inch reveal recommended.



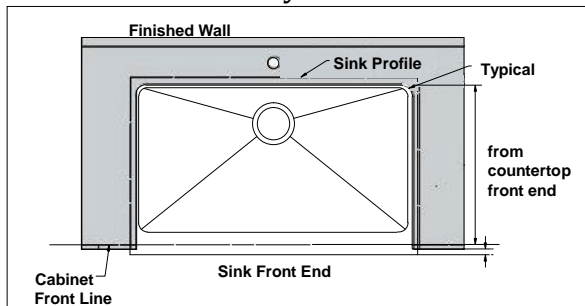
**Figure 4**



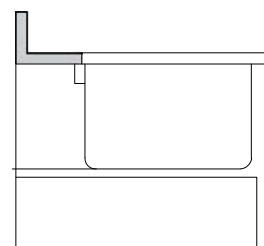
**Figure 5**

Regular flush mount & above counter installation

Above counter installation may reveal sink sides to be raised above the countertop.



**Figure 6**



**Figure 7**

Contact your retailer if any product is damaged or missing prior to installation. Never install a damaged sink as it can void your warranty.

# Recommended Care & Maintenance

## Do

- Clean frequently by thoroughly rinsing with a mild soap and warm water then wipe dry.
- Wipe gently with a soft cloth in the direction of grain lines routinely for preventative cleaning.
- Keep sink free of any standing water as this can cause a buildup of mineral deposit, which can affect the appearance of sink.
- Any stains should be removed by scrubbing in the direction of the grain with a mild abrasive such as Comet.
- Always rinse sink after using any cleaning agent and wipe dry.
- Clean any mineral deposits built up over time with a mild solution of vinegar and water followed by a thorough flush with water.
- NOT RECOMMENDED FOR MIRROR FINISH.
- Extract any scratches with a Scotch-brite pad and cleaning agent rubbing in the direction of the grain.

## Don't

- Leave water spots, steel cookware or utensils in sink for lengthy periods; iron particles often develop rust spots on surface.
- Use a steel wool or scoring pad as it damages the sink surface and causes discoloration.
- Let household cleaning agents or bleach sit in your sink for a long period of time as this may ruin the finish of your sink
- Leave rubber mats, sponges, or cleaning pads in sink for a long period of time as this may ruin the finish of your sink.
- Use the inside of the sink as cutting surface.
- Use any cleaning products containing sulfuric acid or hydrochloric acid as this will attack the sink. Silver cleaners can also contain acids that will damage sink surface.

# FARMHOUSE APRON KITCHEN SINK LIMITED LIFETIME WARRANTY

**EFFECTIVE May 1, 2018**

Kingsman offers the following limited warranty on each of its Kitchen Sink products\* (the "Product"). This warranty extends only to original owner or end-user for personal household use. For commercial uses, additional limitations apply.

Kingsman warrants the Product to be free from defects in workmanship and materials under normal use and service for the period commencing from the initial date of purchase by the owner or end-user, contractor, or builder, from Kingsman or an authorized Kingsman dealer, through the lifetime of the original owner or end-user.

Subject to the Warranty Service provision below, any product reported to the authorized dealer or to Kingsman as being defective within the warranty period will be repaired or replaced (with a product of equal value) at the option of Kingsman. This warranty extends to original owner or end-user and is not transferable to a subsequent owner.

Neither the distributor, authorized Kingsman dealer, nor any other person has been authorized to make any affirmation, representation, or warranty other than those contained in this warranty. Any affirmation, representation, or warranty other than those contained in this warranty shall not be enforceable against Kingsman or any other person.

Kingsman reserves the right to modify this warranty at any time, it being understood that such modifications will not alter the warranty conditions applicable at the time of sale of the products in question.

## Limitations

This warranty shall not apply to instances of incorrect operating procedures, breakages, or damages caused by fault through improper installation, carelessness, abuse, misuse, misapplication, improper maintenance, or alteration of the Product, as well as chemical or natural corrosion, accident, fire, flood, an act of God, or any other casualty. Avoid abrasive cleaners, steel wools, and harsh chemicals as they will scratch, damage, and / or dull the product and / or finish and void this warranty. The owner/end-user of the Product covered by the present warranty is entirely responsible for its proper installation and any applicable plumbing or electrical wiring. Kingsman neither installs nor supervises the installation nor hires a contractor for this purpose; consequently, Kingsman cannot be held responsible for any default, breakage, or damages caused thereby or resulting thereof, either directly or indirectly.

The owner/end-user must provide access to the components of the Product as described in the installation guide so that Kingsman can execute the warranty specified herein. If such access is not available, all expenses to provide said access will be the responsibility of the owner/end-user.

This warranty does not apply to Products that have not been installed or operated in accordance with instructions supplied by Kingsman and all applicable rules, regulations, and legislation pertaining to such installations.

This warranty does not apply unless the Kingsman Product is installed by fully insured licensed contractors. Kingsman strongly recommends that such licensed contractors have experience in the installation of bathroom and kitchen products. Installation of certain products, including, without limitation, glass products (i.e., shower doors and glass sinks) by an inexperienced person may result in glass breakage and, consequently, cause personal injury or death.

Kingsman is not liable for personal injuries or deaths to any persons or for any direct, special, incidental, or consequential damage, loss of time, loss of profits, inconvenience, incidental expenses, labor or material charges, or any other costs resulting from the use of the product or equipment or pertaining to the application of the present warranty, or resulting from the removal or replacement of any product or element or part covered by this warranty.

In any case, Kingsman cannot be held liable for any amount over and above the purchase price paid for the Product by the owner/end-user, contractor, or builder.

## Commercial Limitations

In addition to the above conditions and limitations, the warranty period for products installed for commercial applications or used in commercial ventures is one (1) year from the initial date of purchase by the owner/end-user, contractor, or builder from an authorized dealer. Kingsman is not responsible for loss of use or profit under any circumstances. If the product is used as a display, the warranty period begins when the product is placed on display. This warranty gives the owner/end-user specific legal rights. The owner/end-user may also have other rights which can vary from one state or province to another.

## Warranty Service

In order to obtain service provided under this warranty during regular business hours, contact the dealer or distributor who sold the unit, or contact Kingsman directly. Kingsman will provide the warranty service described above when the following conditions have been met: the failure is of the nature or type covered by the warranty; the user has informed an authorized Kingsman Agent or Kingsman's warranty service department representative of the nature of the problem during the warranty period; conclusive evidence (e.g., proof of purchase or installation) is provided to the foregoing by the user proving that the failure occurred or was discovered within the warranty period; an authorized independent service person or company representative has been permitted to inspect the product during regular business hours within a reasonable time after the problem was reported by the user. ARIEL's warranty obligation shall be discharged upon tender of replacement or repair. The customer's refusal to accept the tender terminates ARIEL's warranty obligations.

\*Certain models are pending approval. Certification may be ended by Kingsman or certification agencies without notice.