



PARSON
39" x 39" x 77"
Zero Threshold Shower

Drain	Model #
R	LM3698BFR064
L	LM3698BFL064

Features

- Barrier free, easy entry threshold.
- Patented, pre-leveled base with **ArmorCore** reinforcement, and textured finish floor.
- Includes collapsible dam with end caps, stainless steel curtain rod, weighted shower curtain, chrome plated brass drain, 2 stainless steel grab bars, and HDPE fold-up seat.
- Simple, easy 1 piece installation
- Full wood reinforced walls for extra strength that enables bars to be located to fit your individual needs.
- Premium, durable applied acrylic/fiberglass construction
- Attractive and easy to clean
- Meets or exceeds UPC, IPC, ANSI Z124.1, NAHB, & SBC
- Made in the USA with a lifetime limited warranty



Components Included (Field Installed)

★ Stainless Steel Curtain Rod



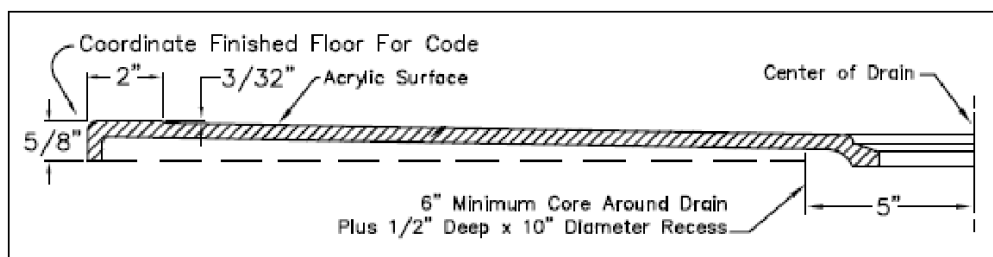
★ Stainless Steel Grab Bars



★ Chrome Plated Brass Drain



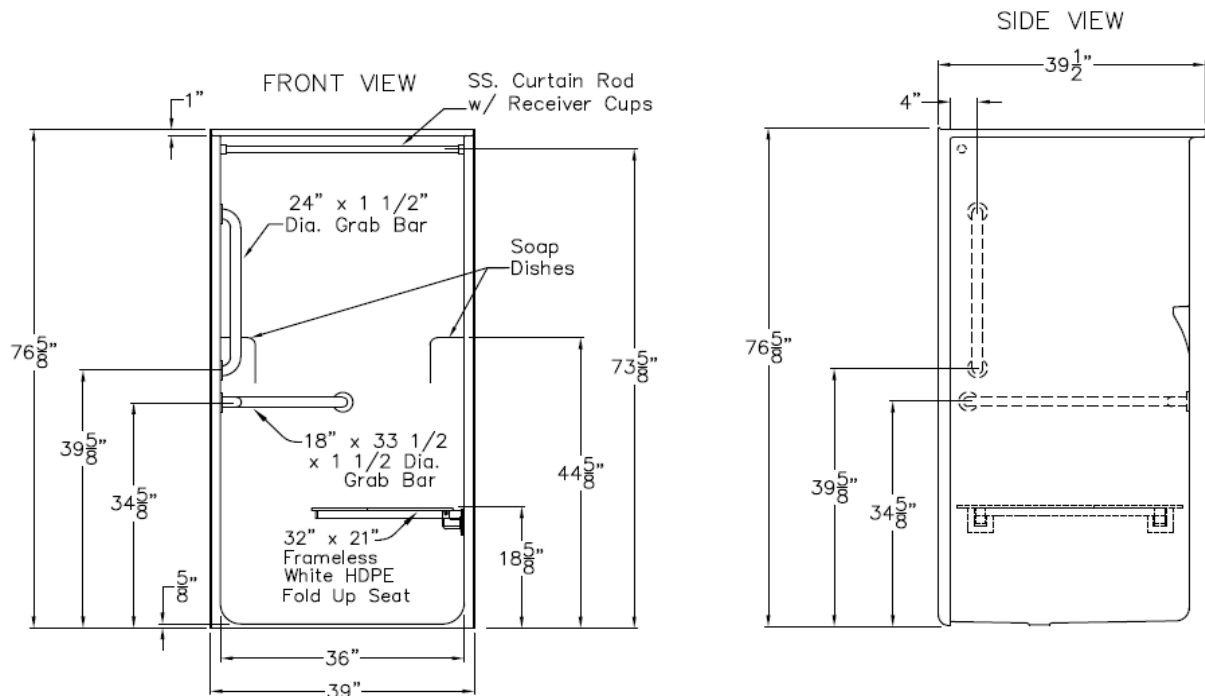
THRESHOLD



HANDED BY THE VALVE

Model LM3698BFL

SUBMITTAL DATA



Transfer Shower Stall

The shower enclosure shall be Laurel Mountain Model LM 3698 BF. Finished surface shall be of a sanitary-grade applied acrylic.

The unit shall have outside dimensions of 39" x 39 1/2" x 76 5/8".

The unit shall meet IAPMO Z124-2011, CSA B45.5-11, ANSI A117.1, ADA, and Home Innovation Research Lab.

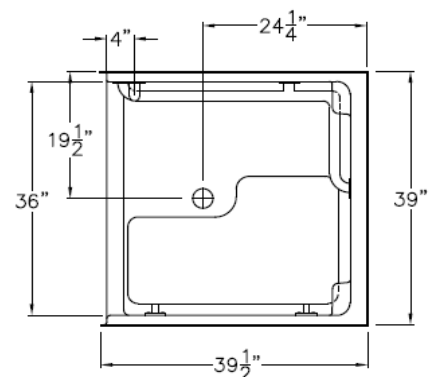
HANDED BY THE VALVE WALL. RIGHT SHOWN, LEFT AVAILABLE.

The enclosure shall be equipped with the following accessories:

- 1) One 18" x 33 1/2" x 1 1/2" diameter, stainless steel horizontal L-grab bar, 2) One 24" x 1 1/2" diameter vertical grab bar both with 1 1/2" statute clearance, mounted with stainless steel bolts, and secured from the rear with 3" x 3" x 11 gauge metal mounting plates,
- 3) Molded soap dishes, 4) 32" x 21" frameless white HDPE fold up seat, 5) One inch diameter, 18 gauge stainless steel curtain rod with receiver cups, 6) Tri-Cell backing, 7) 5/8" threshold.

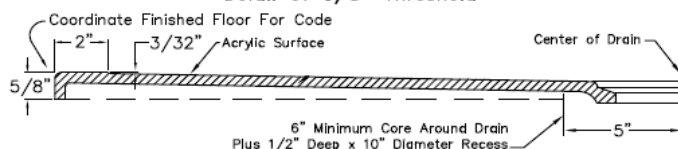
NOTE: THIS UNIT WILL NOT ACCEPT A DOOR!

TOP VIEW



DUE TO THE NATURE OF THE MATERIALS
DIMENSIONS MAY VARY $\pm 1/2"$

Detail of 5/8" Threshold



Laurel Mountain

Toll Free: (800) 930-0050 www.laurelmountainbath.com

LAUREL MOUNTAIN

Drawing#: LM 3698 BF .625

Date: 11/11/21

Parson