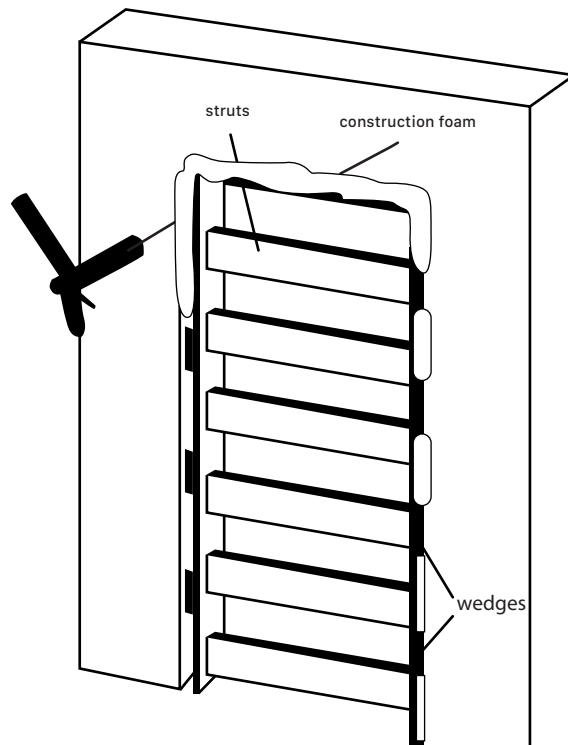
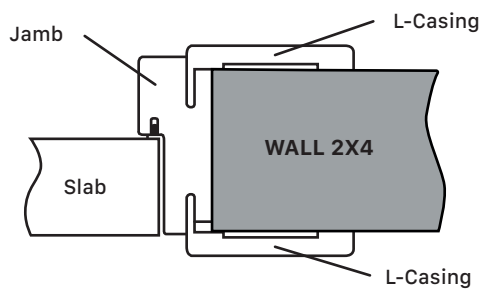


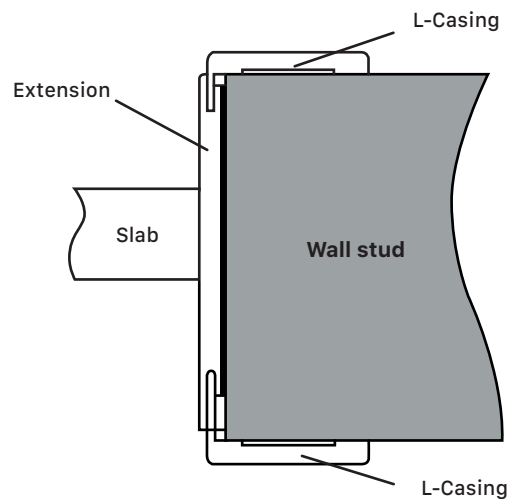
1) Fix the door frame into the rough opening



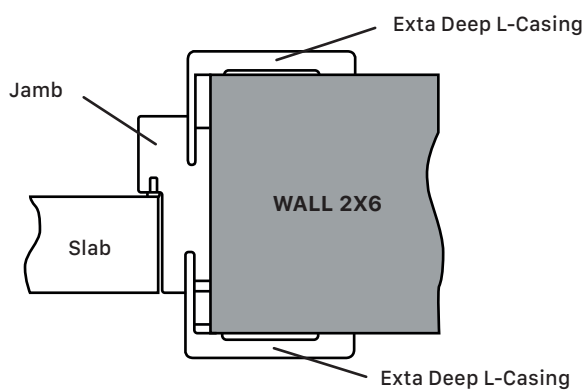
1) Discount Hardware Direct LLC Standard 2X4 wall stud installation manual



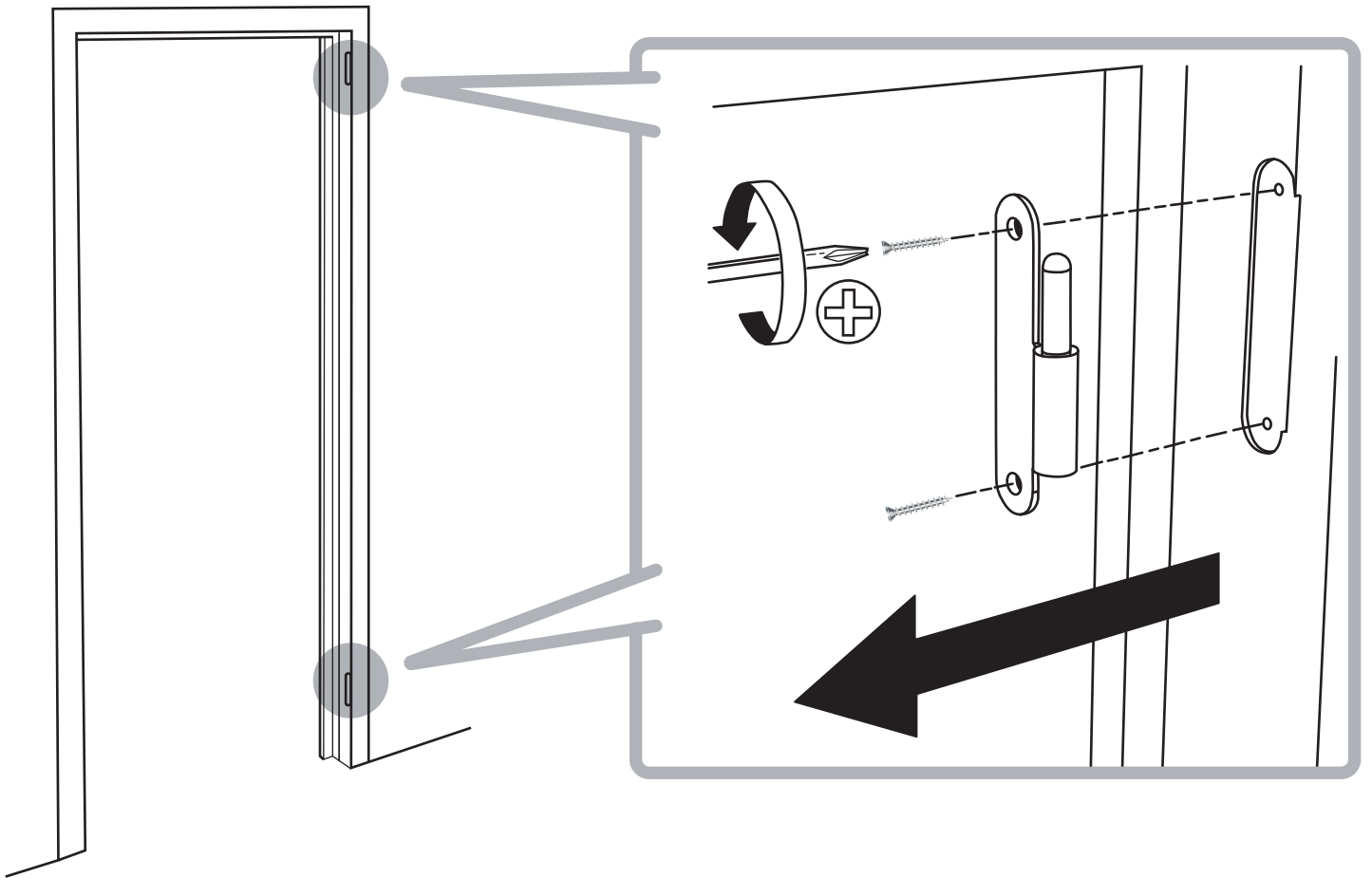
3) Discount Hardware Direct LLC Standard pocket, by-fold and bypass installation manual



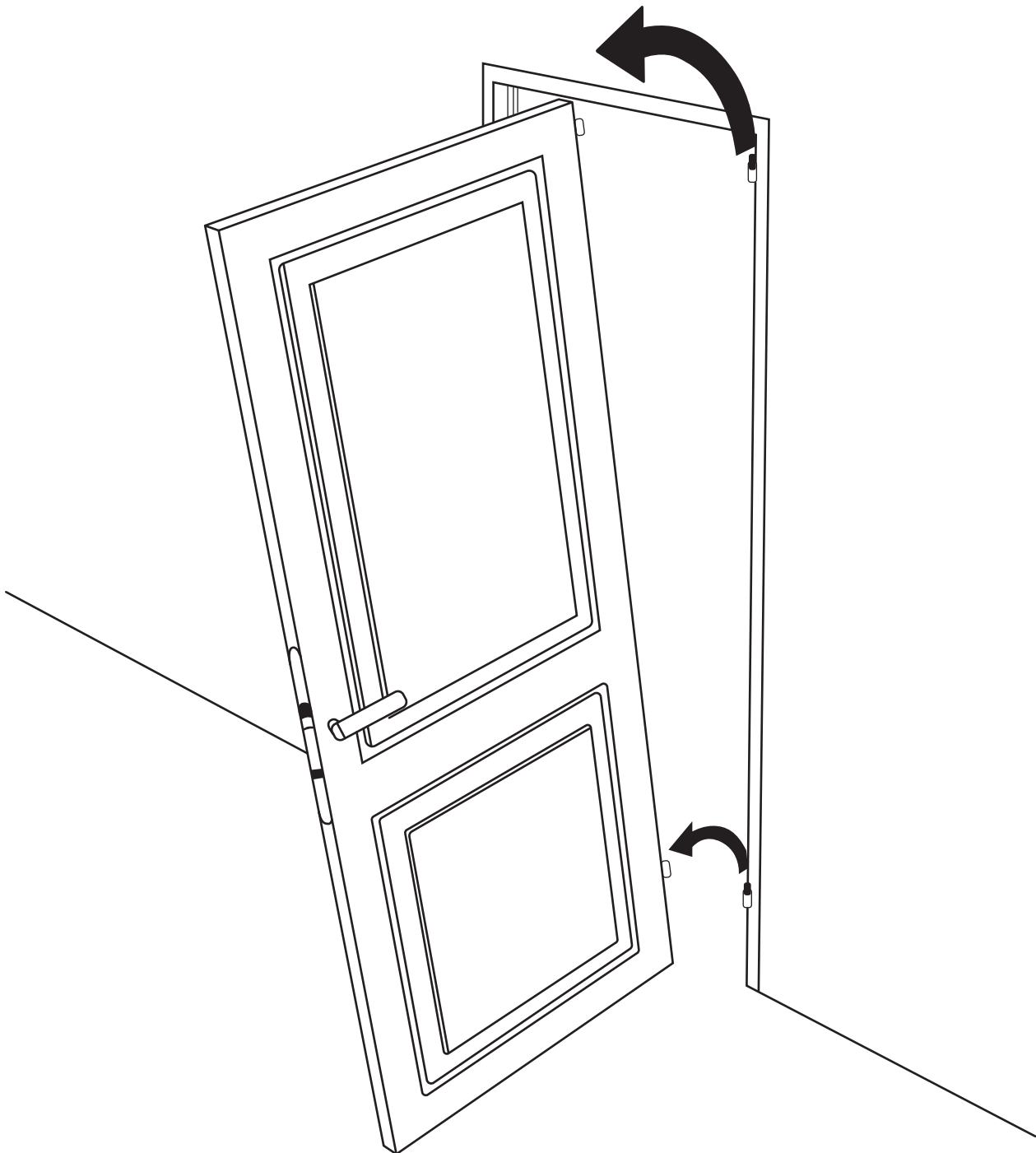
2) Discount Hardware Direct LLC Standard 2X6 wall stud installation manual



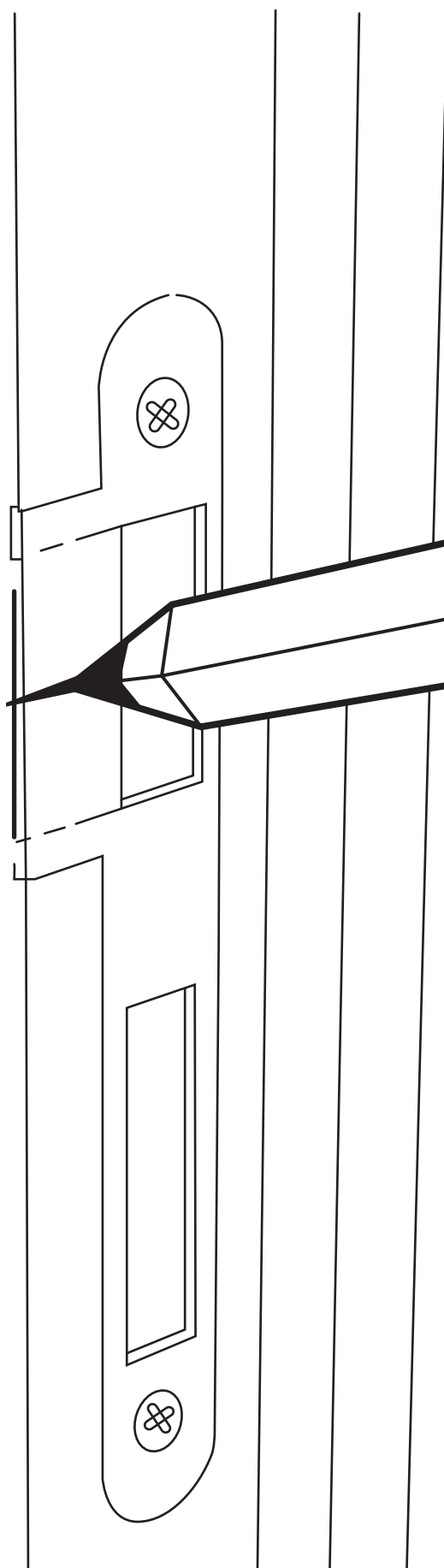
2) Fix the hinges into the jambs



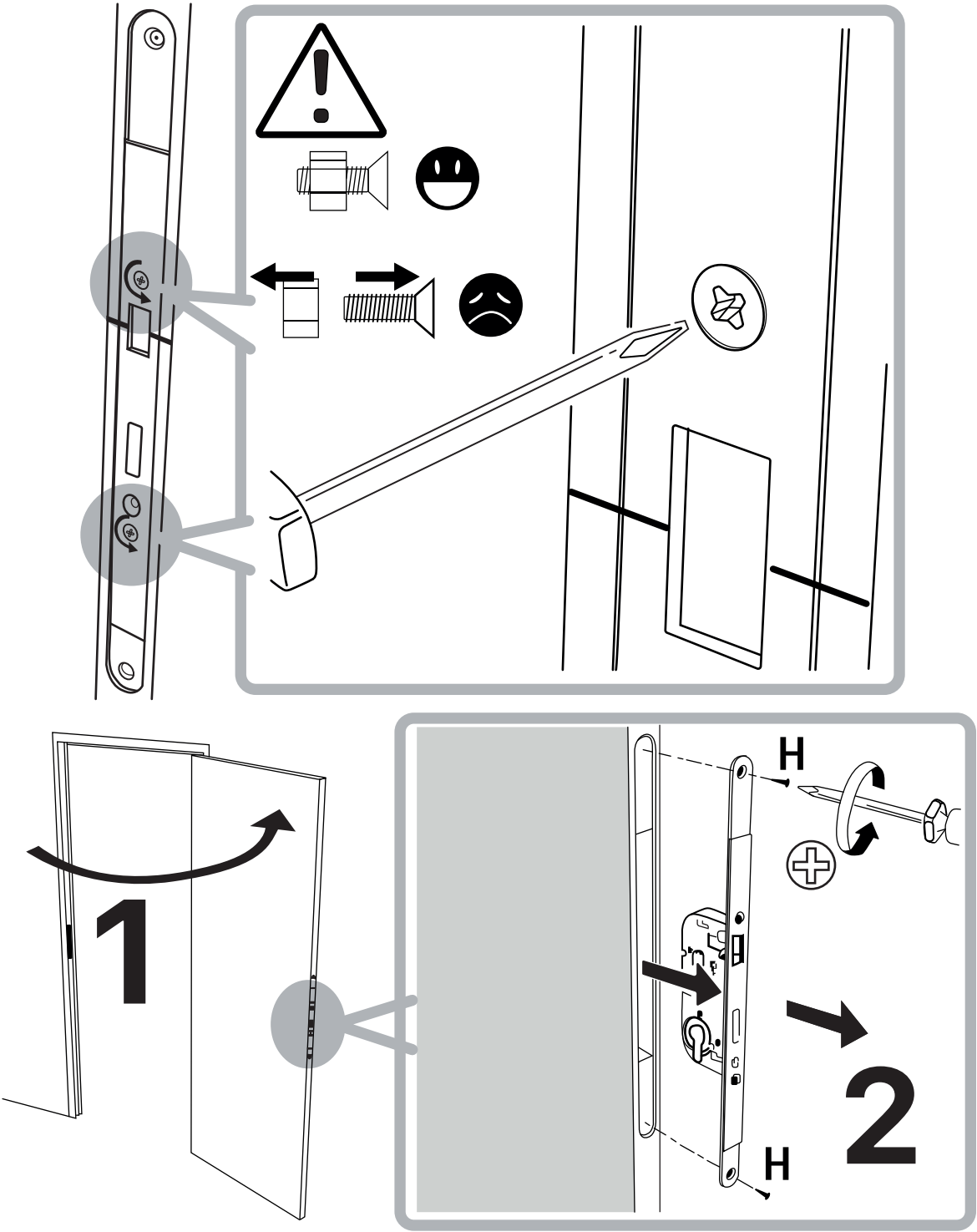
3) Please, hang the door, after hardening for construction foam. Please note: different construction foams have different hardening levels. Read carefully the construction foam usage instructions!



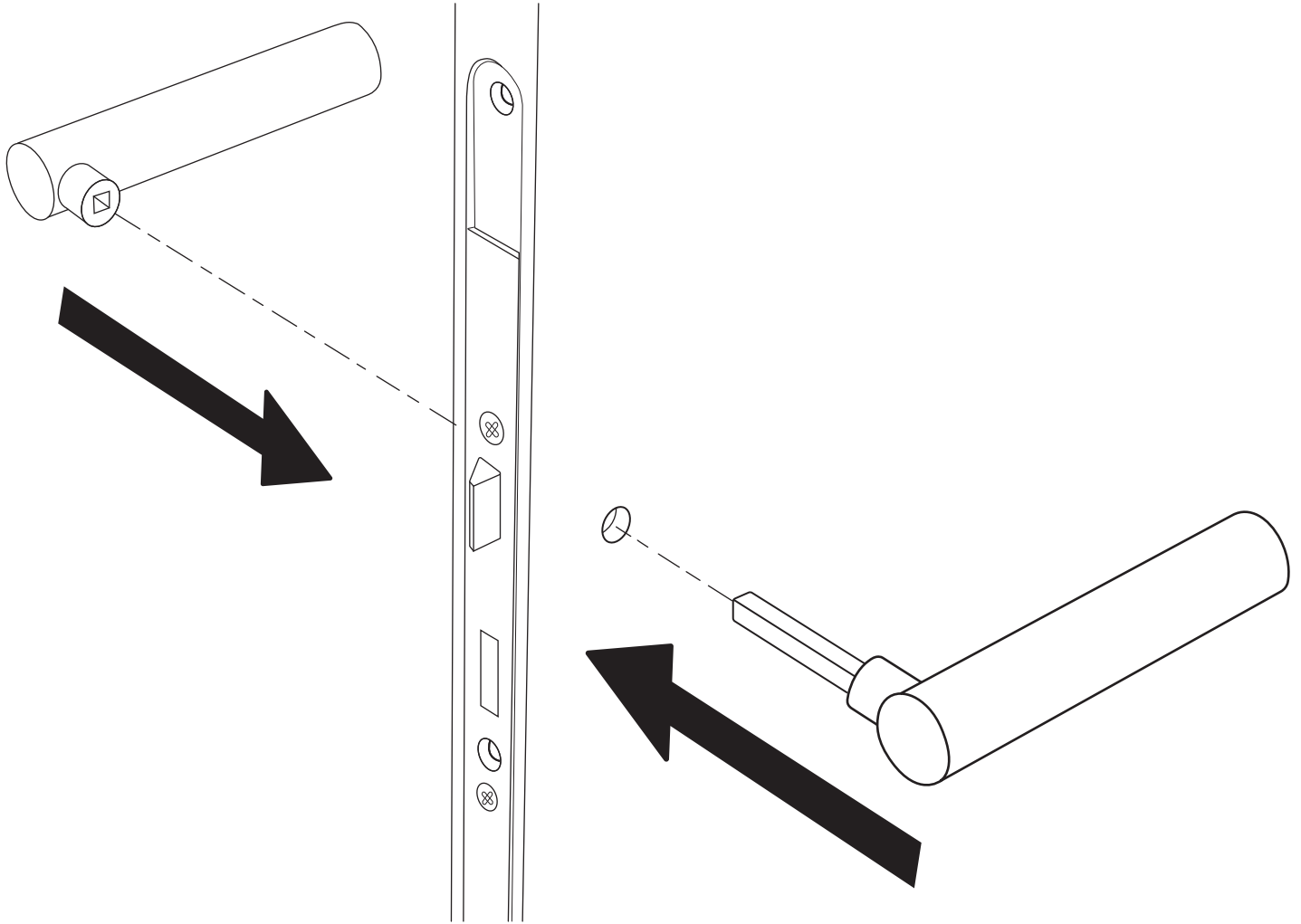
4) Fix the strike plate into the jamb



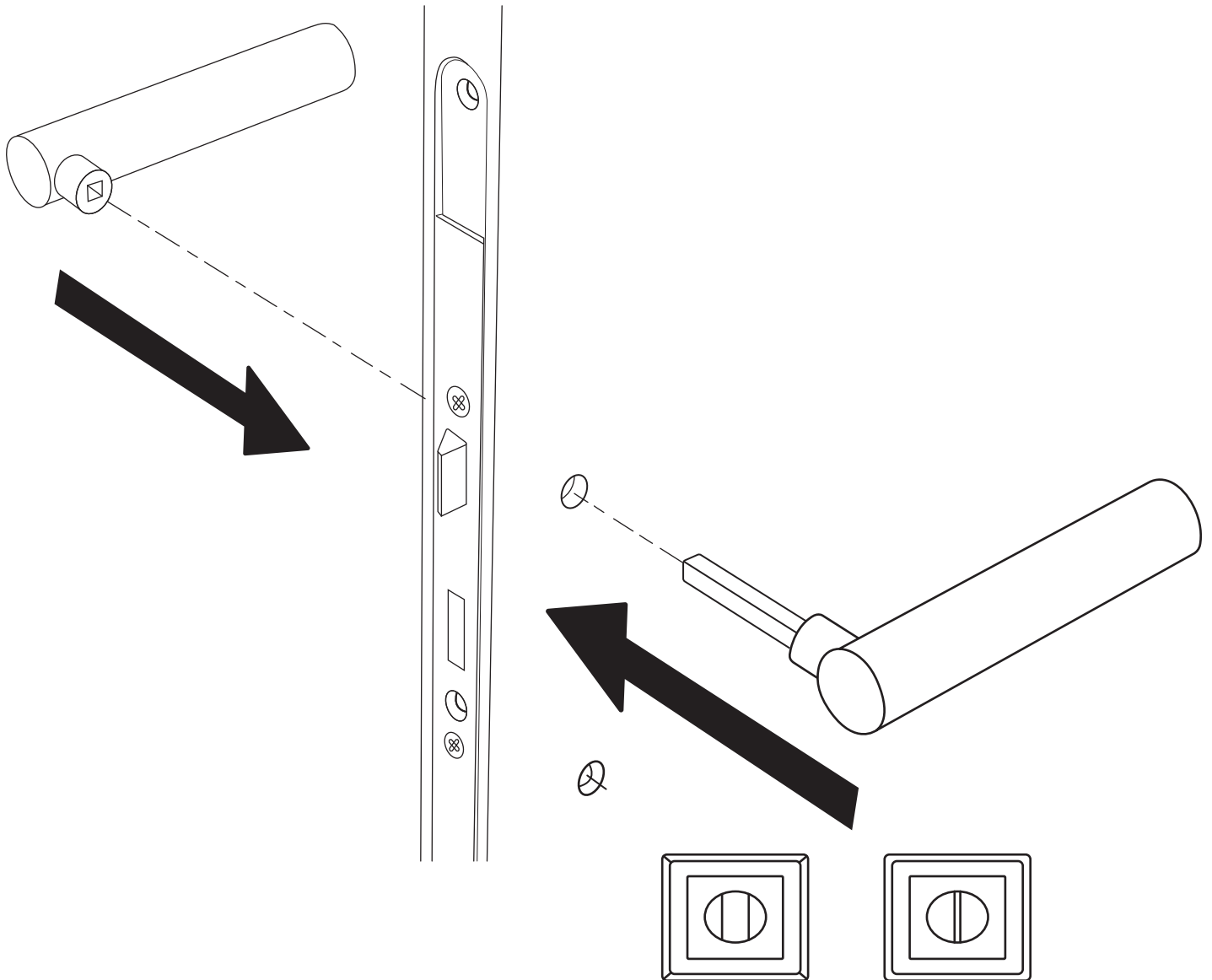
5) Fix the door lock into the door slab



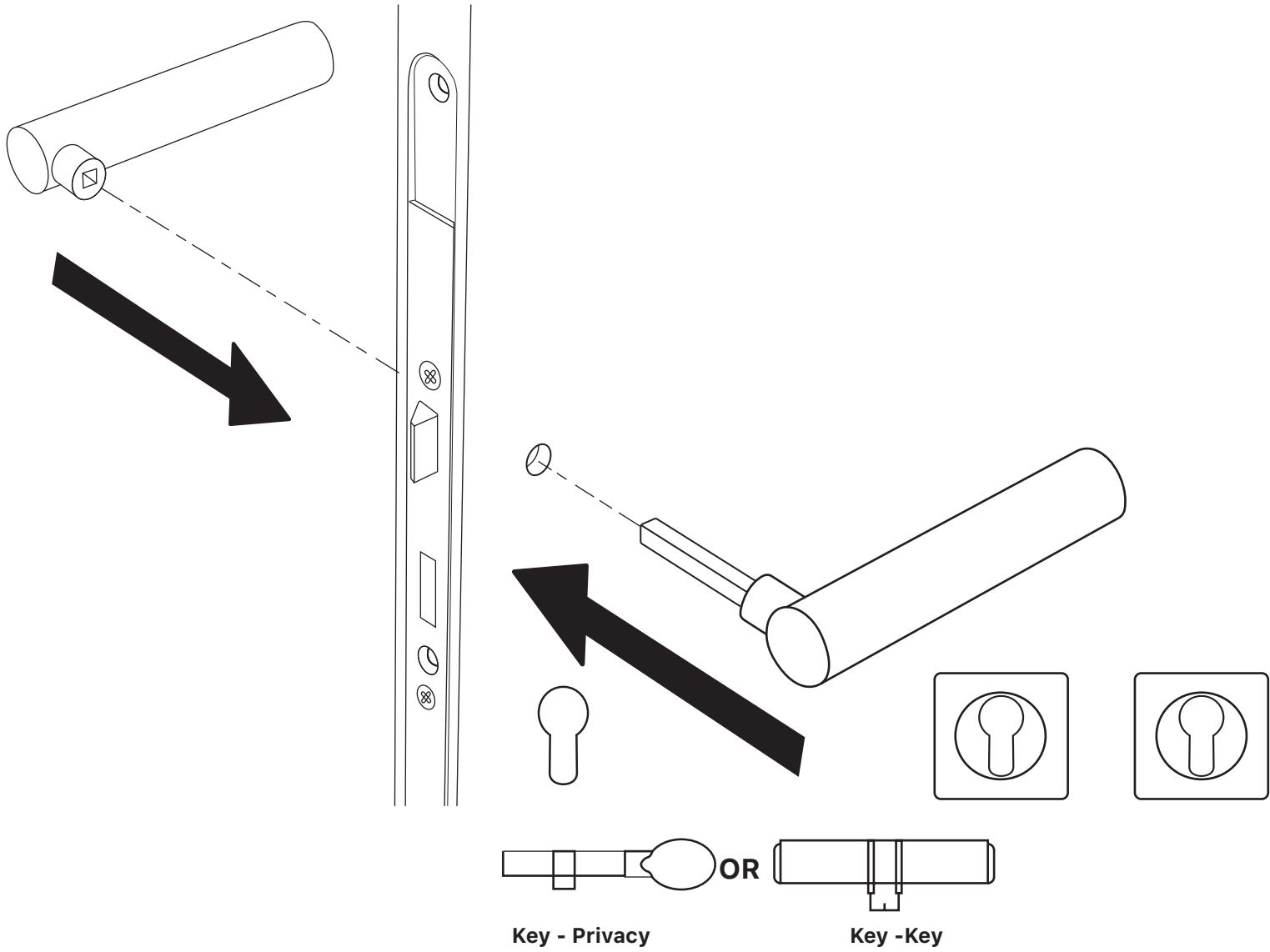
6) Fix the door handle if you have Passage Lock Functionality



7) Fix the handle and cover plates if you have Privacy Lock Functionality



8) Fix the handle, then keyed mechanism and keyed cylinders into the pre-drillings



**Congratulations! Your door has already been installed for a long
time period!
Enjoy the usage of Discount Hardware Direct LLC doors!**

