



**DUAL FLUSH VALVE
INSTALLATION INSTRUCTIONS**

Smarter Flush® Dual Flush Valve Tip Sheet

Water Level

#1

In order to assure proper functioning of the dual flush system the water level in the tank must be above the flush valve body and 1" below the top of the overflow pipe.

Black Donut Gasket

#2

Do not throw away your old tank to bowl donut gasket. It may be the best fit for your toilet. You can chose either your existing gasket or the new supplied gasket for the best fit between your tank and bowl.

Short Flush Adjustment

#3

Adjust the blue float on the side of the dual flush unit all the way to the top. This will use the least amount of water for the half flush. If this is not enough water to clear the bowl then start adjusting down one click at a time until you are satisfied.

Full Flush Adjustment

#4

Adjust the red float on the side of the dual flush unit all the way to the top. This will use the least amount of water for the full flush. If this is not enough water to clear the bowl then start adjusting down one click at a time until you are satisfied.

Handle Connection

#5

When connecting the handle to the switch box with the yellow cable make sure that you do not kink the yellow cable. It needs to be a sweeping curve back to the handle.

Call customer service at 248-434-8609 with any questions.

Smarter Flush® Dual Flush Valve

INSTALLATION INSTRUCTIONS

VERY IMPORTANT:

Read the instructions before your installation.

UNCONDITIONAL 30 DAY PERSONAL SATISFACTION GUARANTEE

If for any reason your Smarter Flush® is not satisfactory, return it to us (PREPAID) within 30 days of purchase, along with a copy of your receipt, and we will refund the purchase price to you.

Our refund guarantee does not cover the cost of any of the shipping and handling charges that may have been incurred.

Smarter Flush® is not responsible for damage caused by failure to follow the Installation Instructions that came with the kit.

This Kit has been designed for most standard two piece toilets with a 2" gravity discharge. This Kit is not designed for one-piece toilets, low profile toilets, or vacuum assist toilets. Before installation check to see if the toilet tank has been manufactured with a 2" discharge hole!

Empty the water from the tank and lift up the flapper. Check the hole under the flapper to ensure that it is the same diameter as the bottom hole on the new flush valve. It is approximately 2" inside diameter. If the hole under the flapper is larger than 2" the Dual Flush Valve cannot be used to upgrade the toilet. If you already purchased the Dual Flush Valve, please return it for a full refund. Your Dual Flush Valve has been designed as a replacement part for many of the most popular brands of flush valves. However, it may be necessary to reuse certain parts which were specifically designed for your particular toilet. During disassembly, set aside all parts from your original toilet tank and do not discard. When and if necessary, use the original part(s) to complete the installation.

Smarter Flush® Certifications:



INSTALLATION INSTRUCTIONS

1. Remove the lid from the tank and set aside. Mark the existing water level on the inside of the toilet tank with a pencil.
2. Turn off the Water Inlet Shut-Off Valve that supplies water to the toilet tank. (See Illustration A).

CAUTION: If your Water Inlet Shut-Off Valve has not been turned on or off recently, check and be sure that the Valve has not become frozen or that the seal has not become dried out. A frozen or dried out Valve may leak if disturbed. The Water Inlet Shut-Off Valve should turn freely and be leak free.

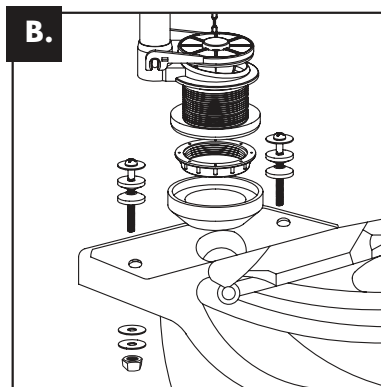
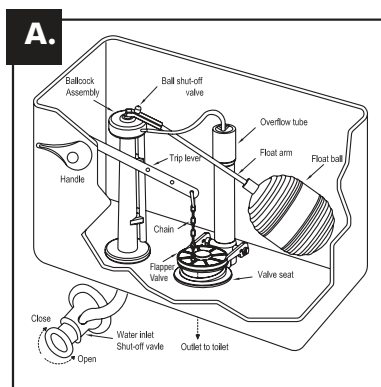
DO NOT USE FORCE TO TURN THE VALVE.

Forcing the Valve to turn could break the Valve and cause serious water damage. If the Valve does not turn freely, or if the Valve leaks, seek expert help. Replacement of the Valve may be necessary.

3. Drain the tank by flushing the toilet and emptying the remaining water from the tank using a towel or sponge.
4. Disconnect the tank water supply hose from fill valve located on the underside of the tank.
5. Disconnect the flapper chain. Remove the flush handle by unscrewing the nut inside the tank which fastens the handle to the tank.
6. Remove the nuts on the underside of the tank from the bolts which fasten the tank to the bowl (See Illustration B).
7. Lift tank off the base then set on a secure surface.
8. Remove the large rubber donut, plastic nut, and washer from the flush valve located on the underside of the tank.
9. Remove the flush valve body from the inside of the tank.
10. Ensure the area around the tank and the bowl openings is clean and free from residue.
11. Remove the bolts from the tank and save them for reinstallation later.

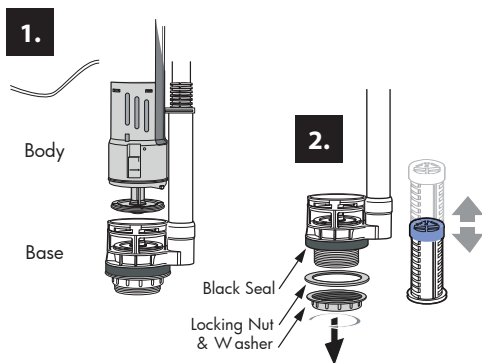
Observe disassembly sequence. This will facilitate re-assembly.

Your original donut gasket may be the best fit so do not discard.

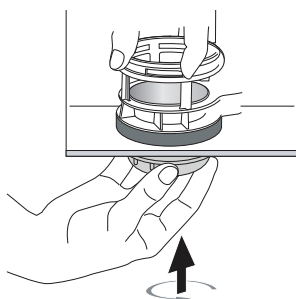


INSTALLATION INSTRUCTIONS

1. Remove locking nut and black plastic washer from Flush Valve Base (See Illustrations 1 and 2). Do not remove the black seal. Hold the lower portion of the Flush Valve Base firmly and rotate the Flush Valve Body clockwise to separate the body from the base.
2. Unlock the Locking Ring by firmly pushing it down (See Illustration 2).

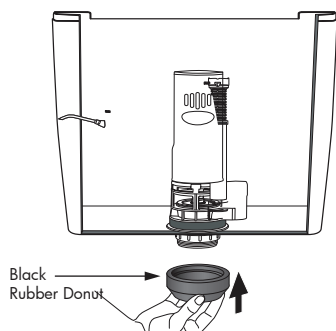


3.



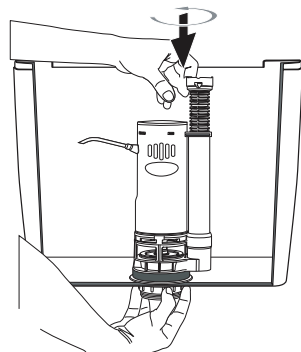
3. Insert Flush Valve Base with the black seal into the tank's discharge hole (See Illustration 3). Fasten the Flush Valve Base to the underside of the tank with the white locking nut and black washer. Do not overtighten.

5.



5. Position the Black Rubber Donut over the locking nut. Gently insert the tank in place (See Illustration 5).

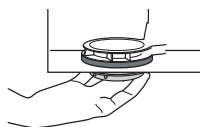
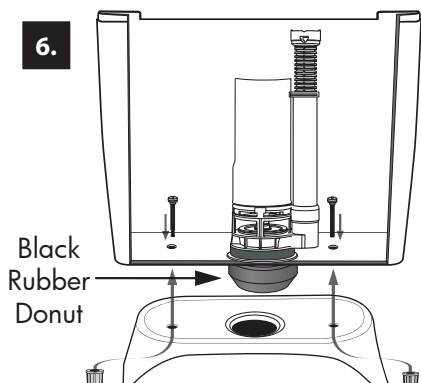
4.



4. Position the Flush Valve Body on the Flush Valve Base and lock it in place by rotating it to the left or right (See Illustration 4). Note that the flush valve can be rotated 360 degrees to the most favorable position.

INSTALLATION INSTRUCTIONS

6. Align the tank and bowl bolt holes (See Illustration 6). Reinstall your bolt assemblies that you removed earlier. Do not overtighten but make sure the tank will not rock.

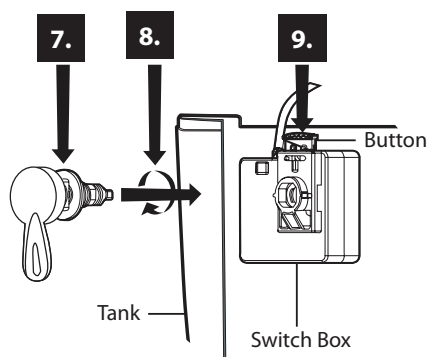


CAUTION: Do not over tighten. Over tightening may cause the bowl or tank to crack. (Suggest firm hand tightening). Toilet tanks may vary slightly from the instructions above.

Flush Handle Instructions

PART 3

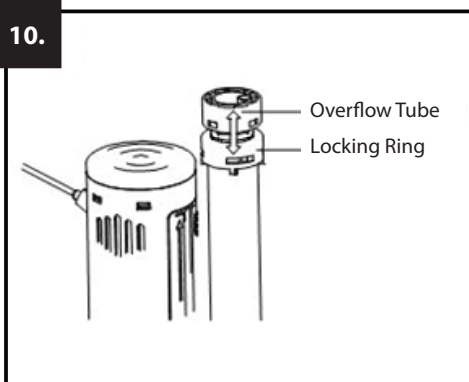
INSTALLATION INSTRUCTIONS



7. Unscrew the white flanged nut counterclockwise then set aside (See Illustration 7). Ensure the black seal is seated on the spindle.
8. Insert the Flush Handle into the tank and position according to toilet tank type and personal preference (See Illustration 8). Screw the flanged nut onto the spindle then tighten.
9. Push down the Switch Box button and hold (See Illustration 9). Insert the end of the spindle into the Switch Box. Make sure the Flush Handle can be turned approximately 90 degrees in either direction. It may be necessary to remove the black seal depending on the model of the tank. **MAKE SURE THE YELLOW CABLE DOES NOT HAVE A KINK. IT NEEDS TO BE A FREE SWEEPING CURVE.**

INSTALLATION INSTRUCTIONS

10.

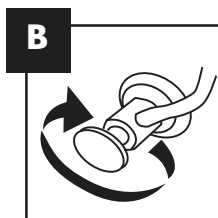
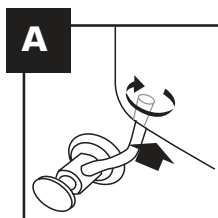


10. Raise or lower the Overflow Tube so that the top is about 1" above the marked water level (See Illustration 10). In order to adjust the Overflow Tube turn the top of the Tube to the right, set the water level position, once set, turn to the left to lock position in.

NOTE: The Overflow Tube may not appear to raise. Continue to manipulate the Overflow Tube until it twists and rises freely.

11. Connect the water supply hose to the underside of the tank then open the Water inlet Shut-Off Valve (See Illustration 11 A and B).

11.

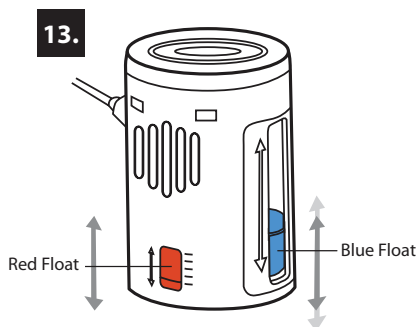


12. Adjust your fill valve so that the water level is between 1" below the top of the Overflow Tube and just over the top of the newly installed flush valve body.

INSTALLATION INSTRUCTIONS

13. Adjust the half flush volume by moving the Blue Float to the top and perform a half flush while observing the adequacy of water flow (See Illustration 13). If not enough water is available for a good flush, lower the Blue Float one click, flushing each time, until enough water is flushed to clear the bowl. This can be best observed by throwing a piece of toilet tissue in the bowl each time you flush. When the correct setting is reached, the bowl clears properly.

Adjust the Full Flush volume by raising the Red Float to the top (see Illustration 13) and perform a full flush as stated in the previous step. Raising the Red Float releases less water to flush and the flush time is shorter. Replace the toilet lid.



Note: Take time to experiment with the settings and obtain optimum water savings!

WARRANTY

This product Warranty extends to the original consumer/purchaser of the product. We guarantee it to be free from defect in the materials used, and the workmanship for a normal installation, reasonable use and common service for a PERIOD OF FIVE YEARS from the date of purchase as shown on the consumer/purchaser's receipt.

The Warranty obligation is limited to the repair or replacement of the product (at our option) within the Warranty period. To obtain service under this Warranty, the product must be returned to the address in the Contact section of the company website www.smarterflush.com, accompanied by a copy of the purchaser's receipt. The Warranty does not apply to any costs associated with a) shipping and handling, b) any costs associated with installation, removal, reinstallation or c) labor or expenses other than mentioned above.

UNCONDITIONAL 30 DAY GUARANTEE.

This Warranty is in lieu of all other expressed warranties, obligations, or liabilities. IN NO EVENT SHALL THE MANUFACTURER, DISTRIBUTOR, OR INSTALLER BE LIABLE FOR ANY SPECIAL, INCIDENTAL OR CONSEQUENTIAL DAMAGES FOR BREACH OF THIS OR ANY OTHER WARRANTY, EXPRESSED OR IMPLIED.

Some states do not allow the **exclusion or limitation of incidental or consequential damages, so this exclusion or limitation may not apply to you.** This Warranty gives you specific legal rights, and you may also have other rights which may vary from state to state.