

# HOW TO Cut & Join PVC Schedule 40



iStock™  
Credit: benedek

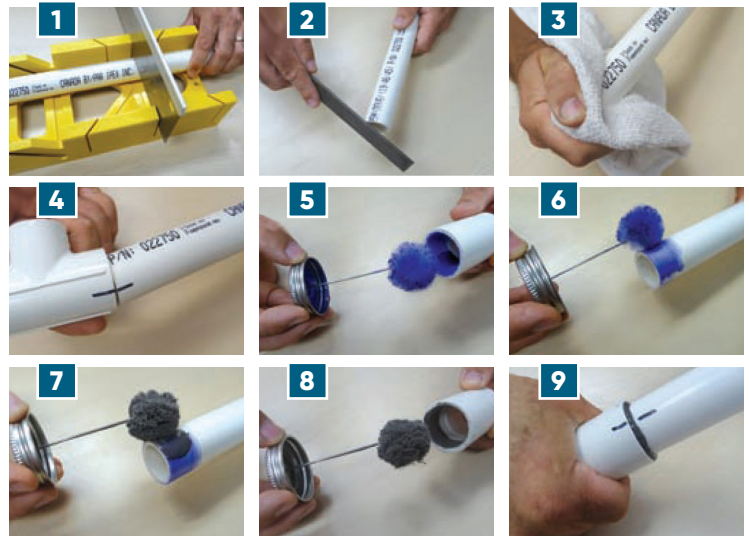
## Solvent Weld Connections

- 1** Cut pipe square (miter box & saw, pipe cutter, handsaw, etc.).
- 2** Deburr pipe & bevel outside edge (file, knife, etc.).
- 3** Clean pipe & fitting with a clean cloth.
- 4** Test fit & mark orientation of fitting on pipe.
- 5** Work PVC primer into fitting socket.
- 6** Work primer onto end of pipe 1/2" beyond depth of fitting socket & apply second layer of primer to fitting socket.
- 7** Apply a full even layer of PVC cement onto the pipe end (do not brush out into a thin layer).
- 8** Apply a layer of cement into the fitting socket & apply a second full even layer of cement to the pipe end.
- 9** Immediately assemble socket onto pipe with 1/2 turn, ensuring proper alignment. Hold assembly together for 30 seconds to prevent & with excess cement from the joint.

## Threaded Connections

- 1** Wrap clockwise 2-3 turns of white PTFE thread sealing tape onto male threads following tape manufacturers' instructions.
- 2** Assemble fitting finger-tight, then tighten with a wrench. **DO NOT OVERTIGHTEN AND DAMAGE THE FITTING**

## SOLVENT WELD CONNECTIONS



## THREADED CONNECTIONS

