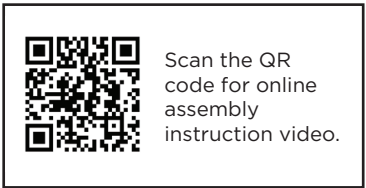


BILT. INTELLIGENT INSTRUCTIONS



Available on most iOS and Android devices

DOWNLOAD THE **FREE** APP



Threespine® is a patented technology invented by Vålinge Innovation AB. The Threespine® word mark and logo are registered trademarks for click furniture technology owned by Vålinge Innovation AB and any use of such marks is under license.

ITEM # 5683036, 5683037, 5683041,
5683032, 5683028, 5683022

Two Door Wall Cabinet (30"/36"H)

MODEL # LWSCLICK-29, LWSCLICK-31
LWSCLICK-32, LWSCLICK-38
LWSCLICK-40, LWSCLICK-41

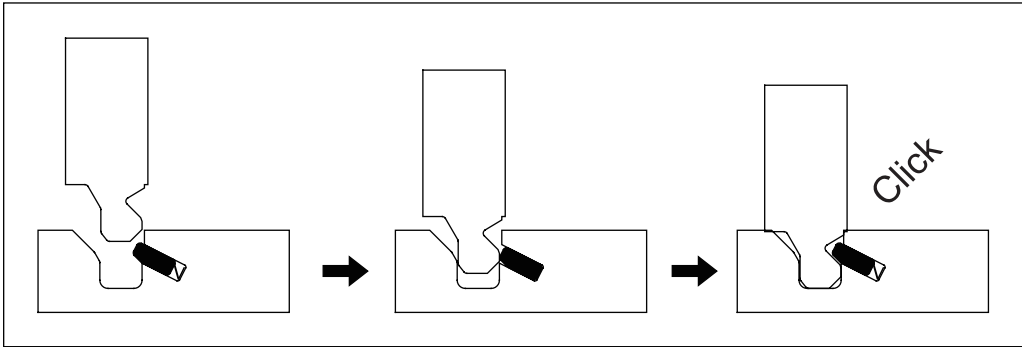
ATTACH YOUR RECEIPT HERE

Serial Number _____ Purchase Date _____



Please call for replacement parts or assistance: 1-866-942-5362
Pacific Standard Time: 8:30 am – 4:30 pm PST Monday to Friday
Or visit our web site: www.whalenfurniture.com

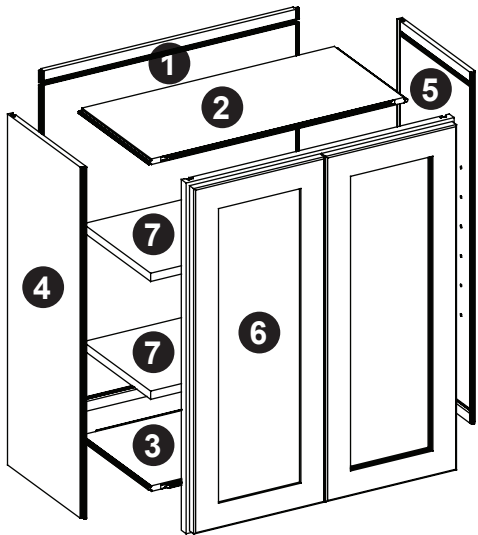
HOW CLICK-IT WORKS



Key Feature of Click-IT Powered by Threespine

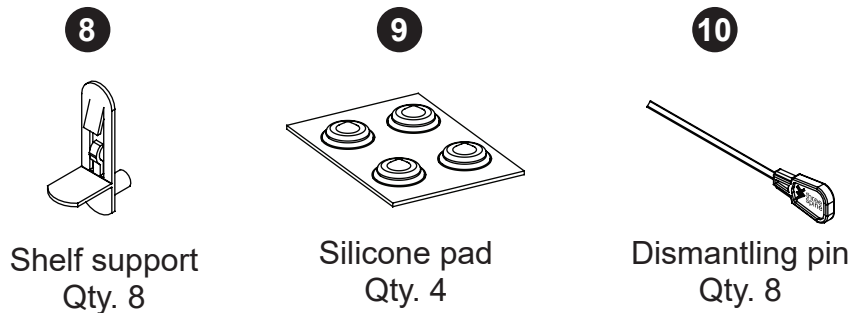
- Patented flexible insert
- Groove on the opposite panel
- Tool-Less Click-IT in place
- Achieve full joint connection

PACKAGE CONTENTS



PART	DESCRIPTION	QUANTITY
1	Back panel	1
2	Top panel	1
3	Bottom panel	1
4	Left side panel	1
5	Right side panel	1
6	Door frame	1
7	Adjustable shelf	2

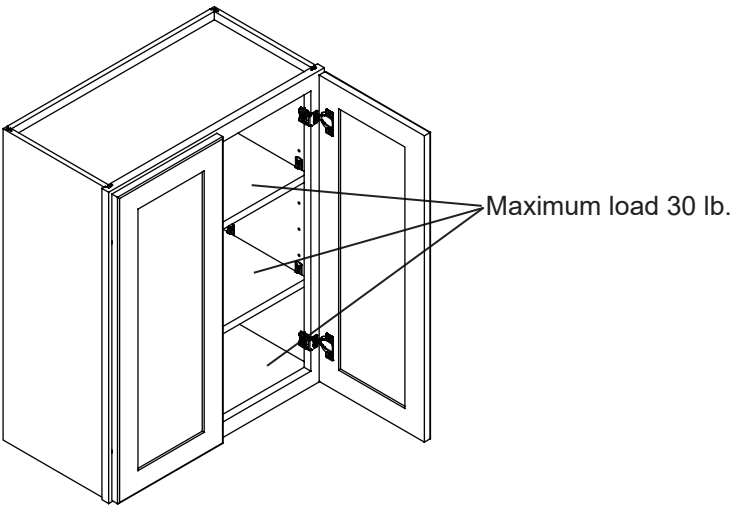
HARDWARE CONTENTS



! SAFETY INFORMATION

Please read and understand this entire manual before attempting to assemble, operate or install the product.

- Do not allow children to climb or play in or around this product.
- Use this unit for its intended purpose only. Do not use shelves as step ladder.
- To avoid damage, assemble the product on a sturdy, level and protective surface.
- Do not push furniture, especially on carpeted floor. Have someone help you lift the item and place it in its new location. Remove any shelves before moving.



! WARNING

UNIT IS INTENDED FOR USE ONLY WITH MAXIMUM WEIGHTS INDICATED. OVERLOADING STORAGE UNIT WITH PRODUCTS HEAVIER THAN MAXIMUM WEIGHT MAY RESULT IN INJURY. DISTRIBUTE ANY WEIGHT IN UNITS EVENLY.

PREPARATION

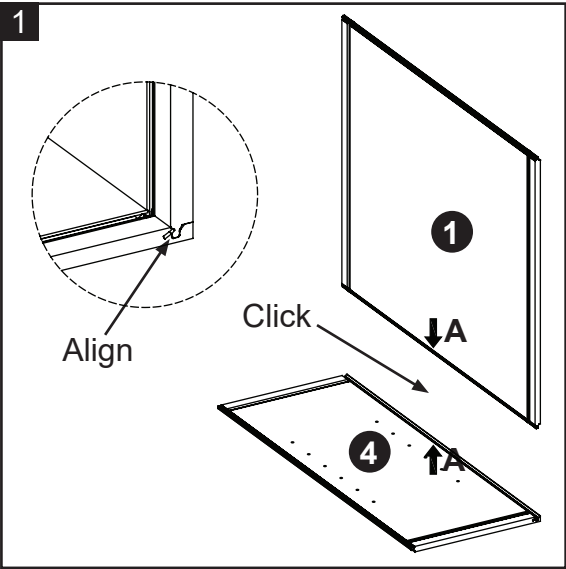
Please read the instruction sheets completely before assembly. Examine all packaging material before discarding carton. Remove any remaining staples from the carton before discarding. Remove all parts from carton and separate into groups as indicated on part list. Please ensure all parts are included prior to assembly.

No tools required to assemble.

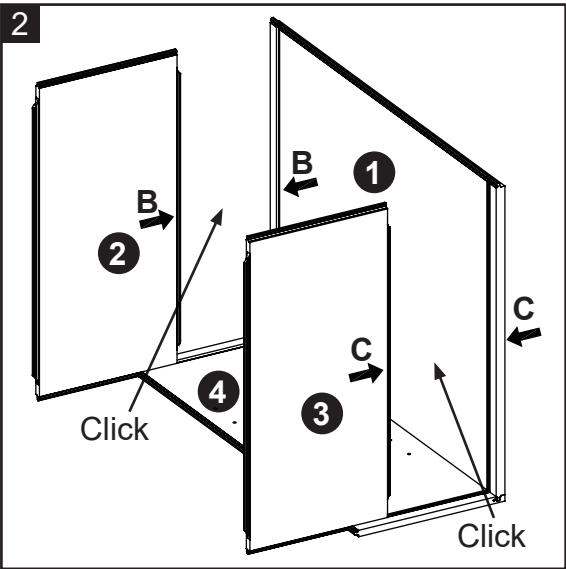
ASSEMBLY INSTRUCTIONS

- 1a. Find back panel (1) and left side panel (4).
1b. Match up “A” label on back panel (1) with “A” label on left side panel (4) and click together. Make sure the connection is flush across the entire joint and there are no gaps between the two panels.

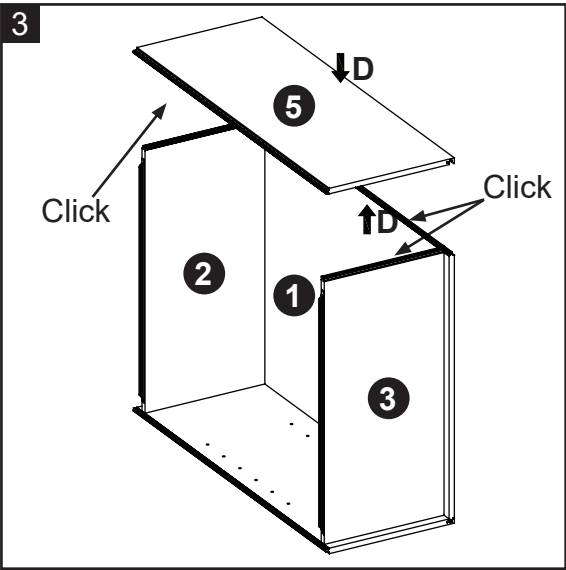
* Assembly Tip – Make sure edges are aligned before clicking together.
** Assembly Tip – To attach side panels you may find it easier to flip the cabinet on its side(s). Be careful not to damage or scratch the finished sides.



- 2a. Find top panel (2) and bottom panel (3).
2b. Match up “B” label on top panel (2) with “B” label on back panel (1) and click together. Make sure there are no gaps between the three panels.
2c. Match up “C” label on bottom panel (3) with “C” label on back panel (1) and click together. Make sure there are no gaps between the three panels.

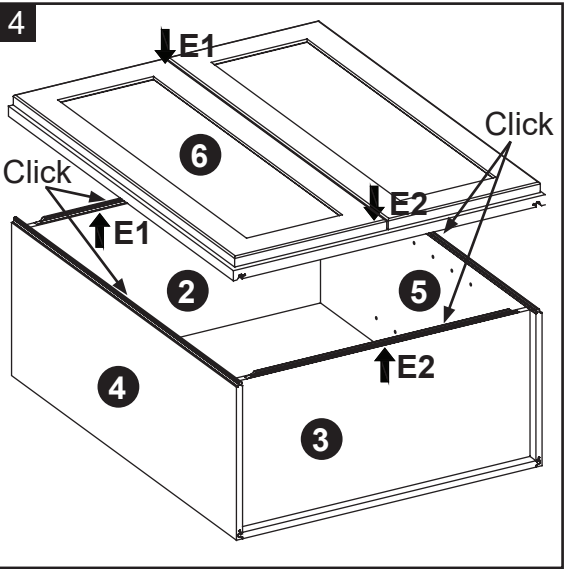


- 3a. Find right side panel (5).
3b. Match up “D” label on right side panel (5) with “D” label on back panel (1) and click together. Make sure there are no gaps on all three connection sides.

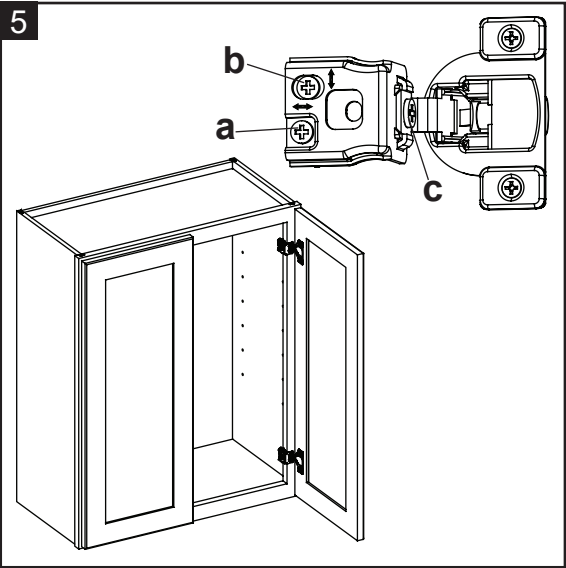


ASSEMBLY INSTRUCTIONS

- 4a. Find door frame with door attached (6).
4b. Match up “E1” label on door frame (6) with “E1” label on top panel (2), and “E2” label on door frame (6) with “E2” label on bottom panel (3) and click together. Make sure there are no gaps on all four connection sides.



5. In & Out Adjustment: Turn screw (a) clockwise or counterclockwise.
Up & Down Adjustment: Turn screw (b) clockwise or counterclockwise.
Left & Right Adjustment: Turn screw (c) clockwise or counterclockwise.

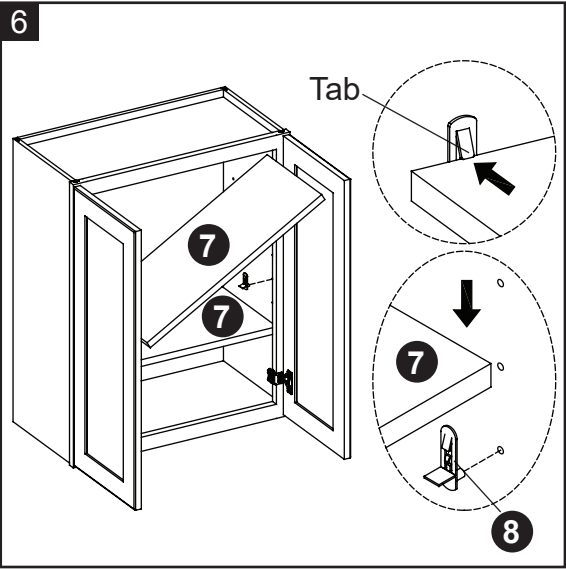
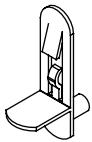


6. Insert shelf supports (8) into the desired holes inside each side compartment. Make sure you place the four shelf supports at the same level to level the shelf, then put in the adjustable shelf (7).

To remove the shelves, push the tabs on the shelf supports and lift the shelf.

Hardware Used

- 8 Shelf support x 8



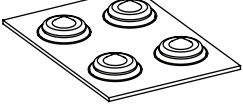
ASSEMBLY INSTRUCTIONS

7. Peel and stick two silicone pads (9) onto the inside corners of each door.

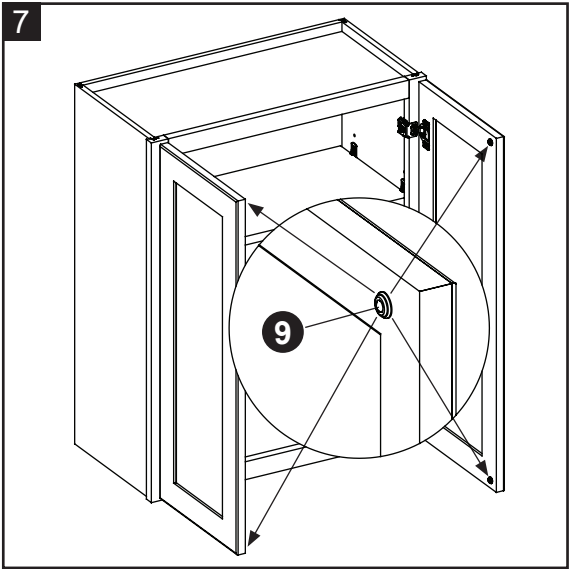
Hardware Used

9

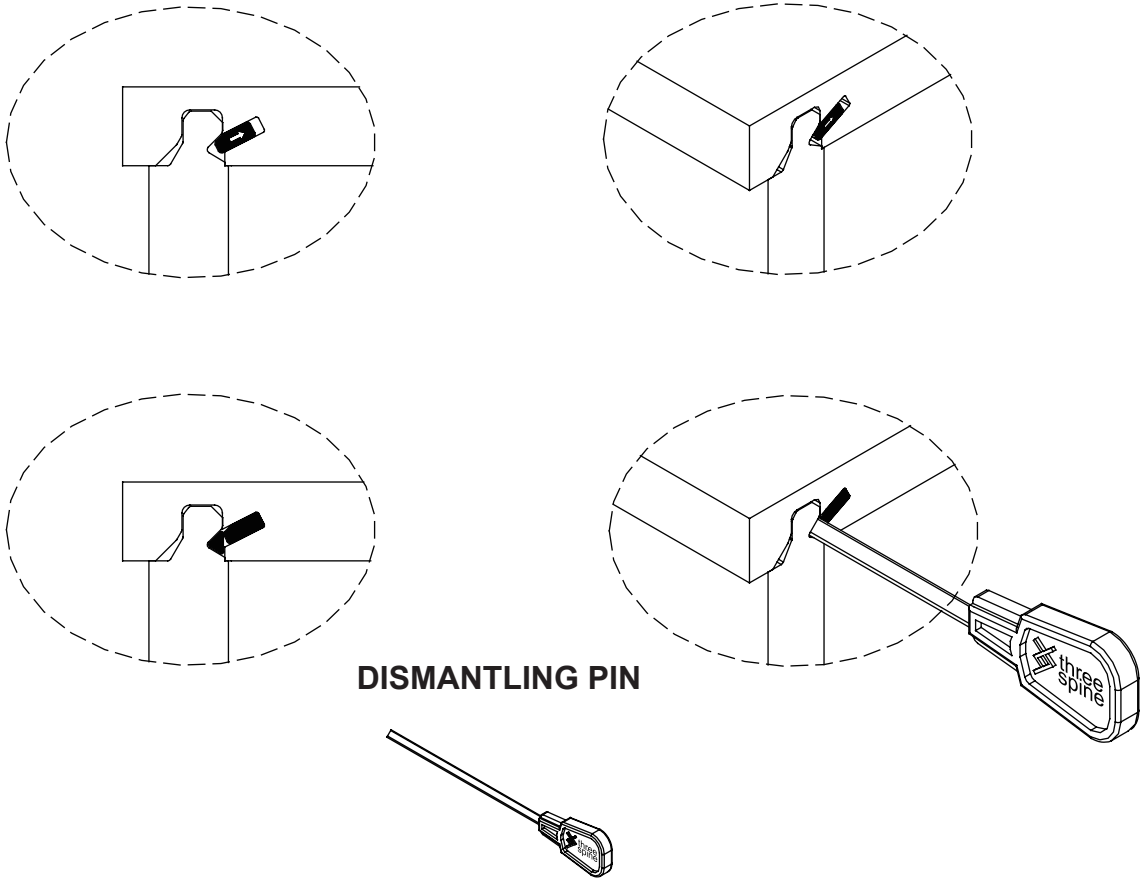
Silicone pad



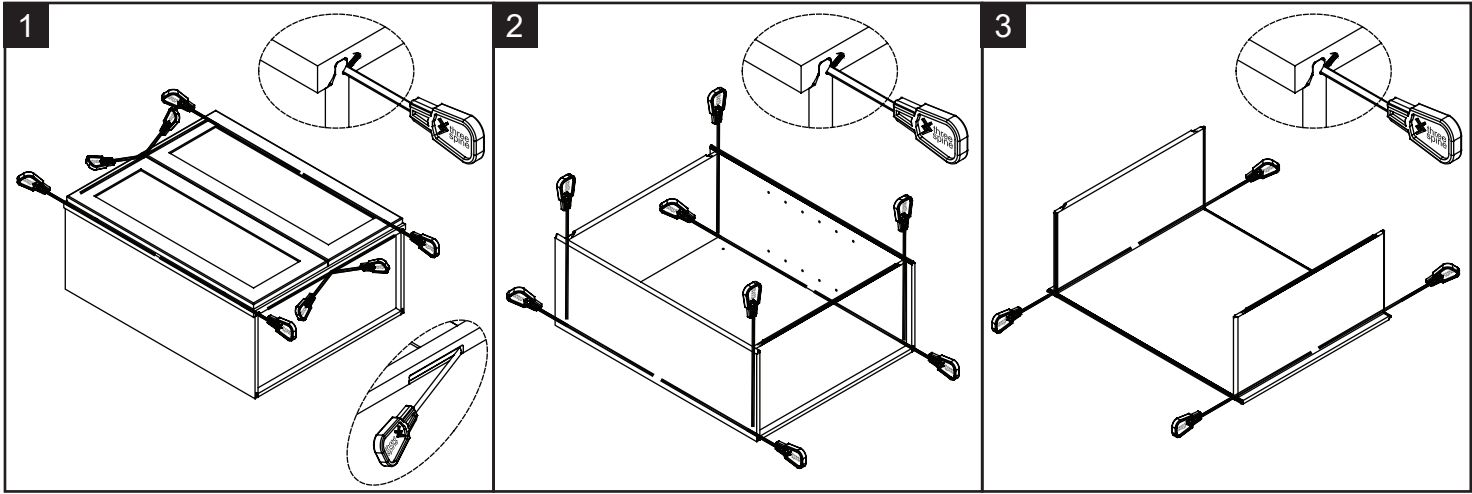
x 4



DISASSEMBLING



- 1. Insert the dismantling pin into the triangle hole.
- 2. The dismantling pin needs to be fully inserted.
- 3. You will need more than 1 for some panels.
- 4. It is important that dismantling pins in the sides meet each other so that you are sure the frame is fully unlocked.



CARE AND MAINTENANCE

- To clean and care for your furniture:
- Use a soft, clean cloth that will not scratch the surface when dusting.
 - Use of furniture polishes is not necessary. Should you choose to use polishes, test first in an inconspicuous area.
 - Using solvents of any kind on your furniture may damage the finish.
 - Never use water to clean your furniture as it may cause damage to the finish.
 - Liquid spills should be removed immediately. Using a soft clean cloth, blot the spill gently. Avoid rubbing.
 - Stains or marks from crayons or ink markers will be difficult to remove.
 - In the event that your furniture is stained or otherwise damaged during use, we recommend that you call a professional to repair your furniture.

CARING FOR WOOD FURNITURE

- It is best to keep your furniture in a climate-controlled environment. Extreme temperature and humidity changes can cause fading, warping, shrinking and splitting of wood. It is advised to keep furniture away from direct sunlight as sun may damage the finish.
- Proper care and cleaning at home will extend the life of your purchase. Following these important and helpful tips will enhance your furniture as it ages.

ONE-YEAR LIMITED WARRANTY

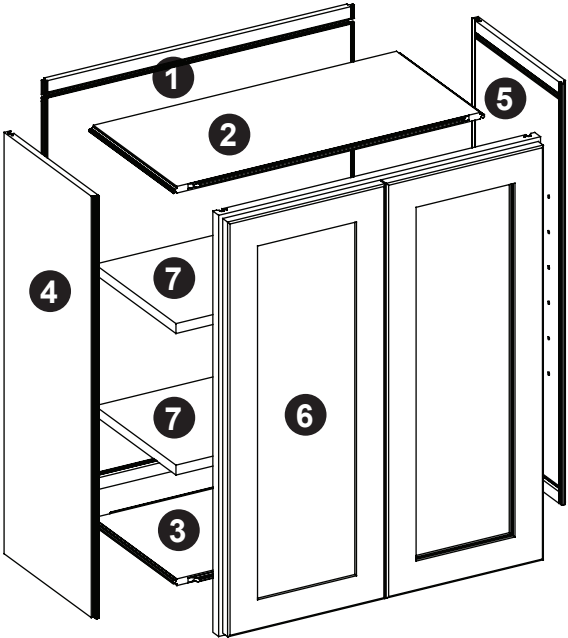
This product is warranted to the original purchaser. If there is a failure in this unit due to defects in materials or workmanship, the manufacturer will repair or replace this item at our discretion without charge. Warranty is void if product has been assembled incorrectly, misused, abused by overloading, altered in any way or damaged due to accident. This warranty is not transferable and does not cover chipping, flaking, scratches, rust, dents, or other damages to the surfaces of this product. Responsibility of the manufacturer is limited to repair or replacement of this product. The manufacturer is not responsible for consequential, incidental, or other damages or losses resulting from product failure.

This warranty is in lieu of all other expressed warranties. Some states do not allow the exclusion or limitation of incidental or consequential damages, so the above limitation may not apply to you. This warranty gives you specific legal rights and you may have other rights which vary from state to state.

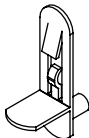
REPLACEMENT PARTS LIST

For replacement parts, call our customer service department at 1-866-942-5362, 8:30 am – 4:30 pm, PST, Monday to Friday.

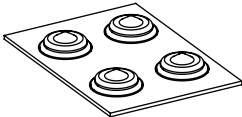
PART	DESCRIPTION	PART#
1	Back panel	00LWSCLICK-29/31/32/38/40/41-01
2	Top panel	00LWSCLICK-29/31/32/38/40/41-02
3	Bottom panel	00LWSCLICK-29/31/32/38/40/41-03
4	Left side panel	00LWSCLICK-29/31/32/38/40/41-04
5	Right side panel	00LWSCLICK-29/31/32/38/40/41-05
6	Door frame	00LWSCLICK-29/31/32/38/40/41-06
7	Adjustable shelf	00LWSCLICK-29/31/32/38/40/41-07
8	Shelf support	00LWSCLICK-SS
9	Silicone pad	00LWSCLICK-SP
10	Dismantling pin	00LWSCLICK-DP



8



9



10

