

# RELIABILT WAXLESS RING KIT™

10 Years Guarantee

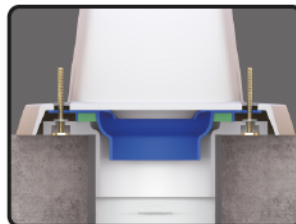
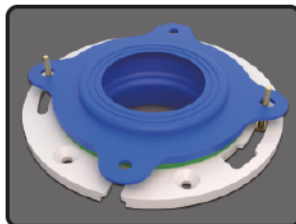
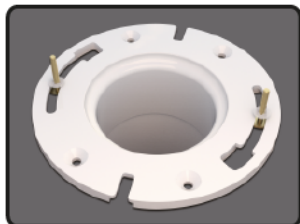
Reliabt Waxless Ring Kit is an innovative new product. It guarantees a tight seal, whether your flange is above the floor, even with the floor or below the floor.

The patented seal design combines a specially designed rubber gasket with an elastic ring, without the mess of a wax ring. The wax free seal accommodates both 1/4" and 5/16" toilet bolts and allows the toilet to be repositioned as needed. It will maintain a tight seal when common toilet and floor movement occurs.

## Installation Steps:

1. Remove toilet and clean the toilet flange and toilet bottom horn removing any wax, residue or dust;
2. Remove and discard the old bolts.
3. Place the T bolt heads in the flange slots, slide to secure. Slide the plastic washers down to the toilet flange to hold T bolts upright.
4. Select your flange condition A, B, or C below and follow the corresponding installation steps

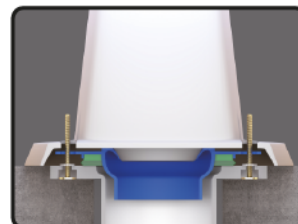
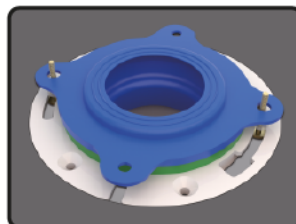
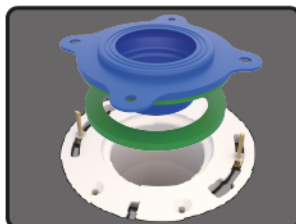
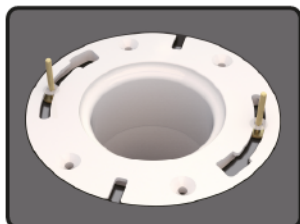
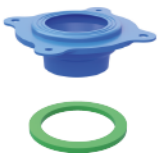
A



### A. Flange is above floor, only use the Blue Seal ①

Place Blue Seal① over toilet flange by sliding 1/4" or 5/16" bolt holes in Blue Seal over bolts.

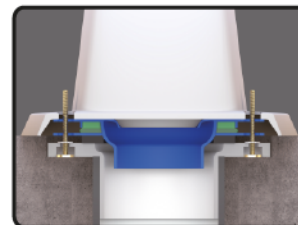
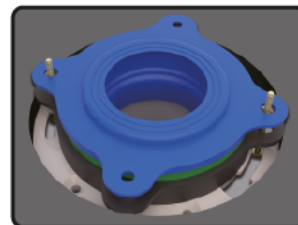
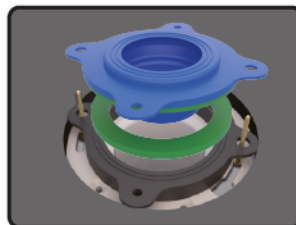
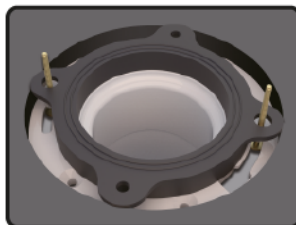
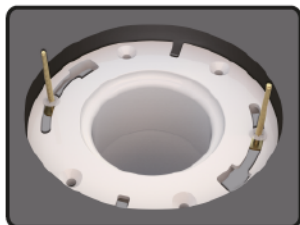
B



### B. Flange is even with or up to 1/4" below floor, use the Green Elastic Spacer ②, and Blue Seal ①.

Place Blue Seal① over Green Elastic Spacer②, then over toilet flange by sliding 1/4" or 5/16" bolt holes in Blue Seal over bolts.

C



### C. When flange is more than 1/4" below floor, use the Black EVA spacer ③ together with Green Elastic Spacer ② and Blue Seal ①

First, place Black EVA spacer③ over the toilet flange by sliding 1/4" or 5/16" bolt holes in Black EVA spacer over bolts. Ensure the soft foam is facing down, against the toilet flange.

Next, place Blue Seal① over Green Elastic Spacer②, then over the installed Black EVA spacer③ by sliding 1/4" or 5/16" bolt holes in Blue Seal over bolts.

4. Position toilet over seal, guiding bolts through toilet base holes. The toilet can be re-set if necessary, unlike a traditional wax ring.
5. Place the bolt cover base(not included) then the metal washer on the bolts and then tighten the nuts. DO NOT OVERTIGHTEN as you may crack the toilet base. Ensure the toilet is flush to the floor and is not rocking. If the toilet is rocking, then redo steps A or B choosing a different install sequence of the Waxless Ring Kit. Install the toilet bolt covers (Not Included).
6. Install water supply hose, flush toilet and inspect for leaks.



① Blue Seal



② Green Elastic Spacer



③ Black EVA Spacer

Patent Pending (US16/904,719)

For more installation details please watch this video:

