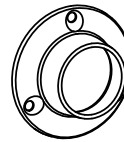


A



B



Fasteners:(Included)Use For Board

AA O/H Screw #7x3/4\"/> 6PCS

Fasteners:(Sale separately)Use For Brick wall

BB O/H Screw #7x1\"/> 6pcs

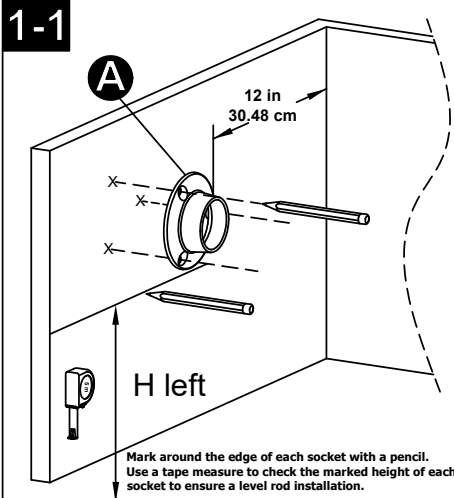
CC Anchor, M6x30mm 6pcs

Fasteners:(Sale separately)Use For Drywall

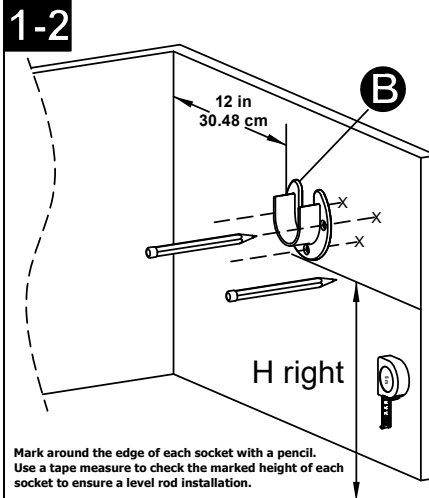
DD O/H Screw #7x1-1/2\"/> 6pcs

EE Anchor, M3 6pcs

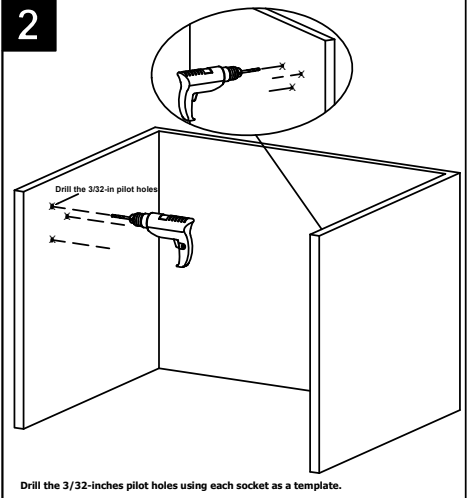
1-1



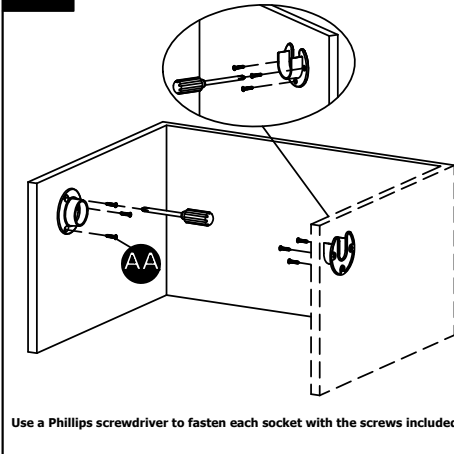
1-2



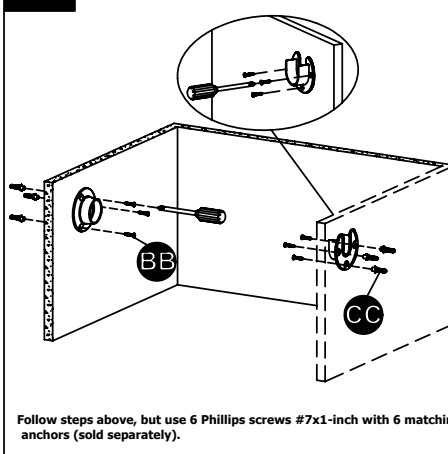
2



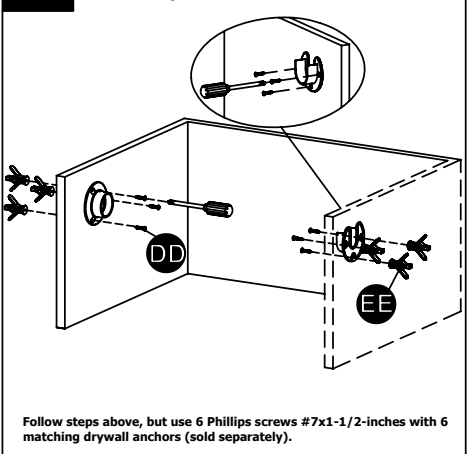
3-1 For Board



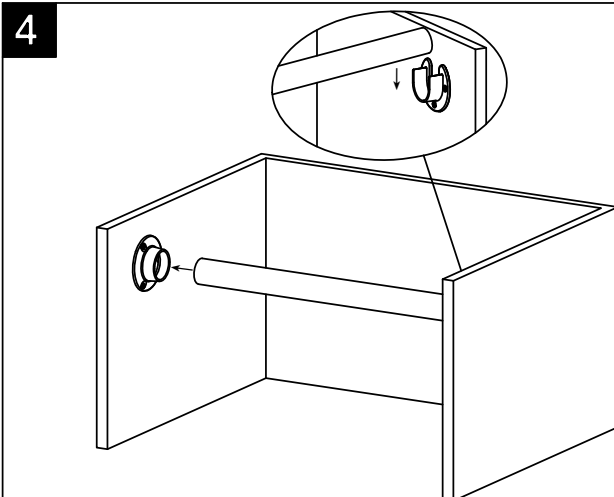
3-2 For Brick or Concrete Wall



3-3 For Drywall



4



5

