



HARBOR BREEZE and logo design are trademarks or registered trademarks of LF, LLC. All rights reserved.

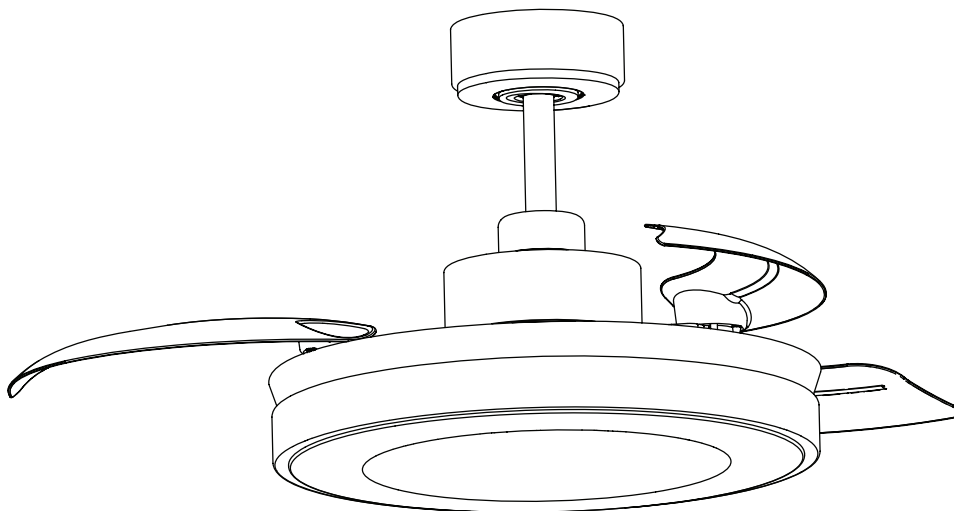
ITEM #5249289/5336648

MODEL #42868/42869

# PRESTWICK RETRACTABLE FAN

**Español p. 16**

**ATTACH YOUR RECEIPT HERE**



**Intertek**

Purchase Date \_\_\_\_\_

Thank you for purchasing this HARBOR BREEZE product.  
Questions, problems, or missing parts?  
Before returning, contact us at:  
**888-251-1003**, 8 a.m. - 8 p.m., EST, Monday - Sunday or at **ascs@lowes.com**.

**TABLE OF CONTENTS**

---

Package Contents. . . . . 3

Preparation . . . . . 3

Safety Information. . . . . 4

Assembly Instructions. . . . . 6

Operating Instructions. . . . . 11

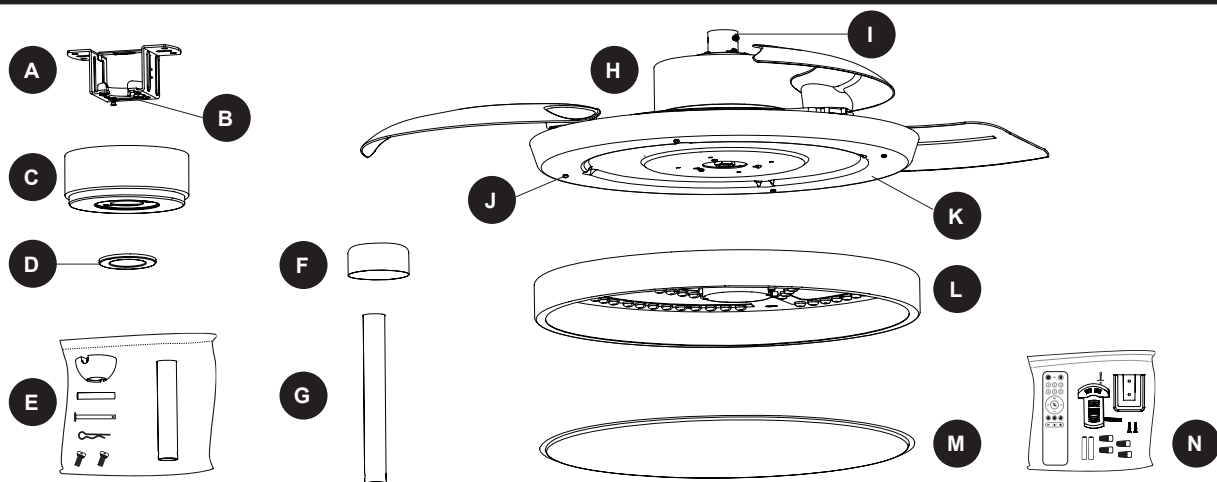
Care and Maintenance. . . . . 12

Troubleshooting. . . . . 12

Limited Lifetime Warranty. . . . . 14

Replacement Parts List. . . . . 15

## PACKAGE CONTENTS

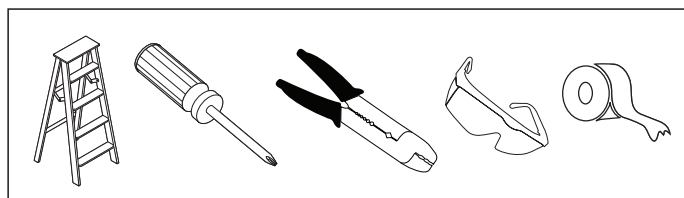


PART	DESCRIPTION	QUANTITY
A	Mounting Bracket	1
B	Canopy Screw (preassembled to Mounting Bracket [A])	2
C	Canopy	1
D	Canopy Cover	1
E	Downrod Pack	1
F	Yoke Cover	1
G	12-Inch Downrod Tube (optional)	1
H	Motor Assembly	1
I	Set Screw (preassembled to Motor Assembly [H])	2
J	Fitter Plate Screw (preassembled to Fitter Plate [K])	4
K	Fitter Plate (preassembled to Motor Assembly [H])	1
L	Light Kit	1
M	Lens	1
N	Remote Pack	1

## PREPARATION

**Estimated Assembly Time:** 30 minutes

Tools Required for Assembly (not included): Step ladder, Phillips screwdriver, Wire stripper/cutter, safety glasses, and electrical tape.



## SAFETY INFORMATION

---

Please read and understand this entire manual before attempting to assemble, operate or install the product. Failure to do so could lead to electrical shock, fire or other injuries that could be hazardous or even fatal.

- Before you begin installing the fixture, disconnect the power by removing fuses or turning off the circuit breakers.
- Make sure that all electrical connections comply with local codes, ordinances, the National Electrical Code, and ANSI/NFPA 70-199. Hire a qualified electrician or consult a do-it-yourself wiring handbook if you are unfamiliar with installing electrical wiring.
- The net weight of the fixture is 20.95 lbs.

### LISTED FOR DAMP LOCATION



#### **DANGER:**

- DO NOT connect this fixture to an electrical system that does not provide a means for equipment grounding. Never use a fixture in a two-wire system that is not grounded. Installing a fixture into an electrical system not having a proper grounding means could cause metal parts of the fixture to carry electrical currents if any of the fixture wires, wire connections or splices were to become broken, cut or loose during the mounting or normal operation of the fixture. Under this condition, anyone coming in contact with the fixture would be subject to electrical shock, which could cause serious injury or death.
- DO NOT connect the bare or green insulation fixture ground wire to the black (hot) current-carrying wire or the white neutral house wire. Connection of the bare or green fixture ground wire to the black or white house wires may cause metal parts of the fixture to carry electrical currents. Under this condition anyone coming in contact with the fixture will receive electrical shock, which could cause serious injury or death.
- DO NOT damage or cut the wire insulation (covering) during installation of the fixture. DO NOT permit wires to contact any surface having a sharp edge. To do so may damage or cut the wire insulation, which could cause serious injury or death from electrical shock.



#### **WARNING:**

- All electrical connections must be in agreement with local codes and ordinances, the National Electric Code (NEC) and ANSI/NFPA 70-1999. Contact your municipal building department to learn about your local codes, permits and/or inspections. Risk of fire - most dwellings built before 1985 have supply wire rated for 140°F. Consult a qualified electrician before installation.
- To avoid personal injury, the use of gloves may be necessary while handling fixture parts with sharp edges.
- DO NOT suspend any fixture by the house wires. A fixture must always be mounted directly to a an outlet box. Wire connectors will not support the weight of a fixture. Suspending a fixture by the house wires and wire connectors will result in the fixture falling, with the possibility of personal injury and the danger of electrical shock or fire.
- To reduce the risk of fire, electrical shock, or personal injury, each wire connector used with this fixture should accept only one 18-gauge wire from the fixture and one 18-gauge wire from the outlet box. If there are three or more wires to connect or any of the wires is larger than 18 gauges, consult an electrician for the proper size wire connectors to use.

#### **CAUTION:**

- To reduce the risk of personal injury, do not bend the blades or blade arms during assembly or after installation. Do not insert any objects in the path of the blades.

## **SAFETY INFORMATION**

---

### **CAUTION:**

- This device complies with part 15 of FCC Rules. Operation is subject to the following two conditions: 1) This device may cause harmful interference, and 2) this device must accept any interference received, including interference that may cause undesired operation.
- This equipment has been tested and found to comply with the limits for a Class B digital device, pursuant to Part 15 of the FCC Rules. These limits are designed to provide reasonable protection against harmful interference in a residential installation. This equipment generates, uses and can radiate radio frequency energy and, if not installed and used in accordance with the instructions, may cause harmful interference to radio communications. However, there is no guarantee that interference will not occur in a particular installation. If this equipment does cause harmful interference to radio or television reception, which can be determined by turning the equipment off and on, the user is encouraged to try to correct the interference by one or more of the following measures:
  - Reorient or relocate the receiving antenna.
  - Increase the separation between the equipment and receiver.
  - Connect the equipment into and outlet on a circuit different from that to which the receiver is connected.
  - Consult the dealer or an experienced radio/TV technician for help.

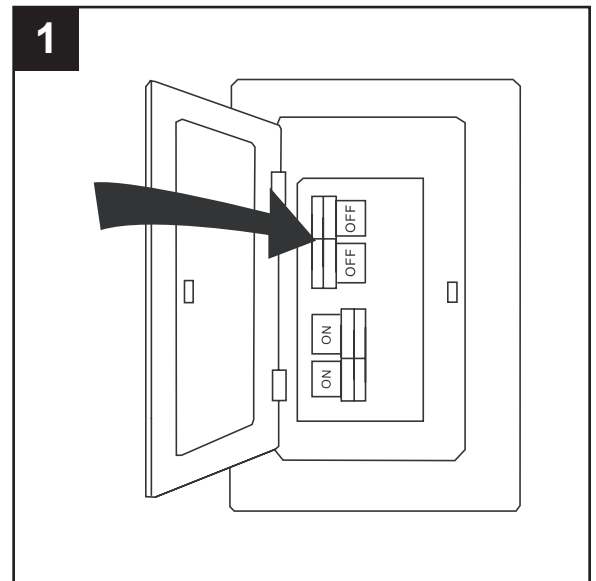
Please note changes or modifications not expressly approved by the party responsible for compliance could void the user's authority to operate the equipment.

HKC-US, 3350 Players Club Parkway, Suite 225, Memphis, TN 38125, 888-251-1003

## ASSEMBLY INSTRUCTIONS

1. Turn off the circuit breakers and the wall switch to the supply line leads.

**⚠ DANGER:** Failure to disconnect the power supply prior to installation may result in serious injury or death.



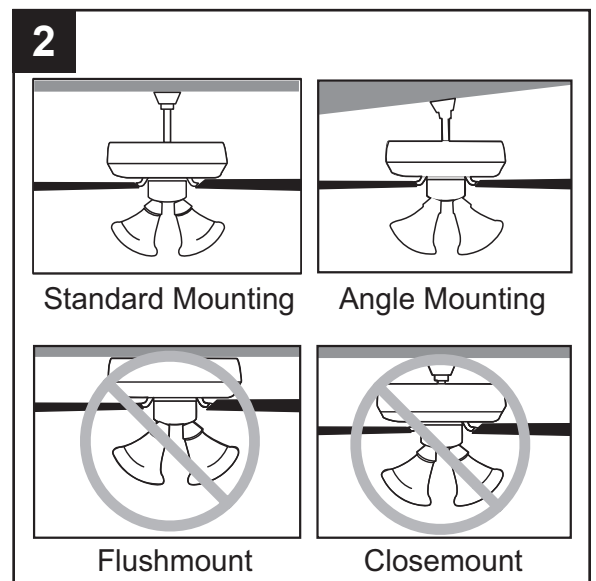
2. Determine the mounting method to use.

**Standard Mounting** is best suited for ceilings 8 ft. or higher. For taller ceilings you may want to use a longer downrod (not included).

**Angle Mounting** is best suited for angled or vaulted ceilings. **Important:** If using the angle mount, check to ensure the ceiling angle is not steeper than 10°.

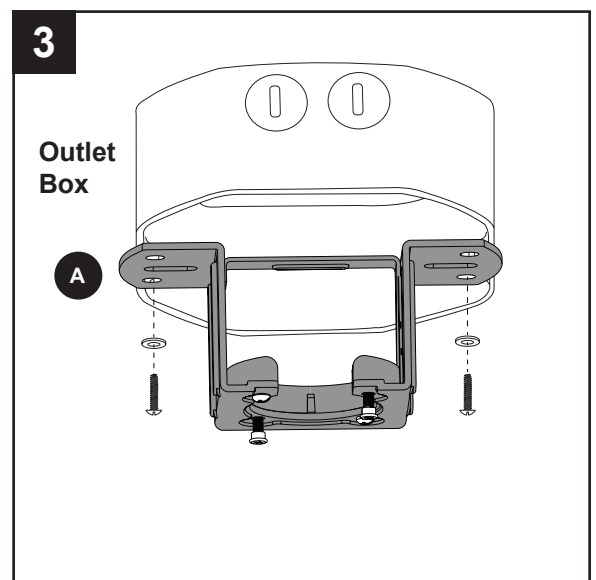
**Flushmount installation** is not available for this item.

**Closemount installation** is not available for this item.



3. Install the mounting bracket (A) to the outlet box (not included) using the screws and washers provided with the outlet box.

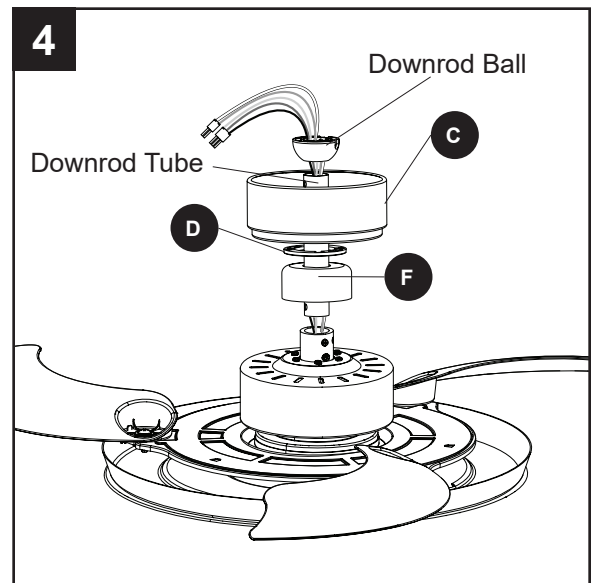
**WARNING:** To reduce the risk of fire, electric shock, or personal injury, mount to the outlet box marked “acceptable for fan support” and use the mounting screws and washers provided with the outlet box.



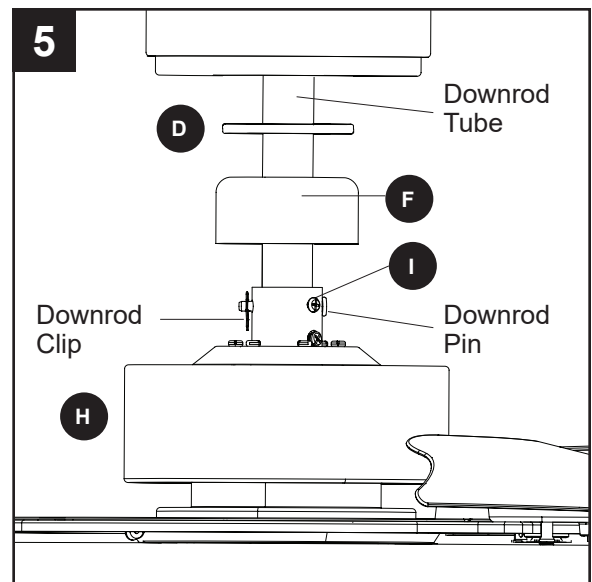
## ASSEMBLY INSTRUCTIONS

4. Note: If your ceiling is 9 feet or higher, you may want to use the 12-inch downrod tube (G) instead of the 6-inch downrod tube from downrod pack (E) in the instructions that follow.

Insert the downrod tube of your choice through the downrod ball from downrod pack (E), canopy (C), canopy cover (D) and yoke cover (F). Feed the wires from the fan through the downrod tube.



5. Loosen but do not remove the two set screws (I) in the yoke of the motor assembly (H). Slide the downrod tube into the yoke of the motor assembly (H), align the holes, then install the downrod pin and downrod clip from downrod pack (E). Retighten the two set screws (I) to secure the downrod. Then slide the yoke cover (F) down until it rests on top of the motor assembly (H).

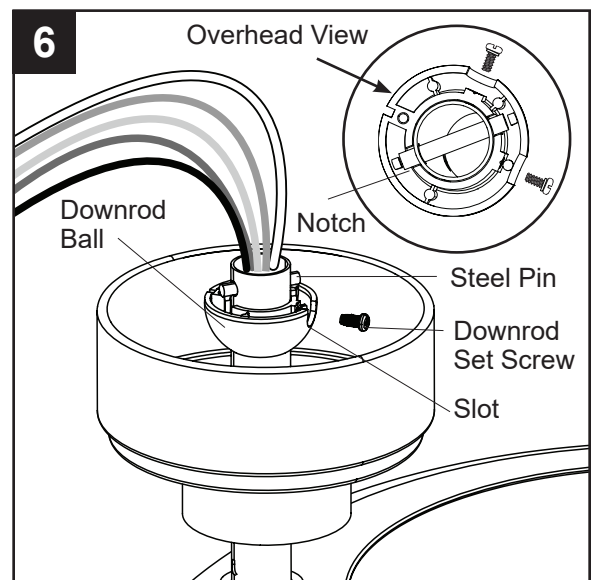


6. Note: Parts mentioned in this step are found in downrod pack (E).

Lower the downrod ball over downrod tube. Then insert steel pin through the two holes in downrod tube. Align the steel pin with the two notches in the downrod ball. Then lift downrod ball all the way up until it is level with the top of downrod tube.

Insert and tighten the two downrod set screws into the two small holes near the top of downrod tube.

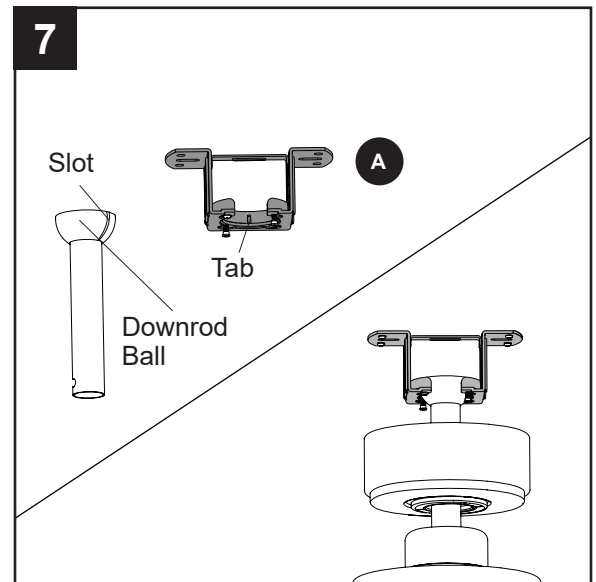
**Note:** Two slots in downrod ball allow access for the downrod set screws.



## ASSEMBLY INSTRUCTIONS

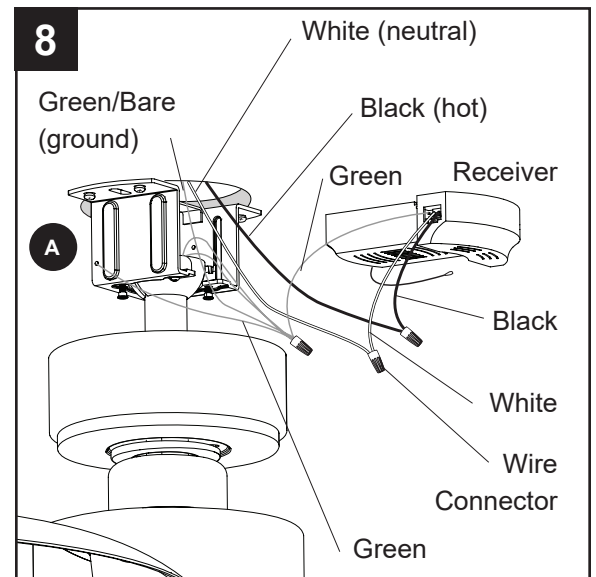
7. Insert downrod ball from downrod pack (E) into the opening of the mounting bracket (A). Rotate the downrod ball until the tab in the mounting bracket (A) is seated in the slot in the downrod ball.

**WARNING:** The fan and/or downrod ball should not rotate in the mounting bracket (A), if installed correctly. Failure to align the slot in the downrod ball with the tab on the mounting bracket (A) may result in fan falling causing serious injury or death.

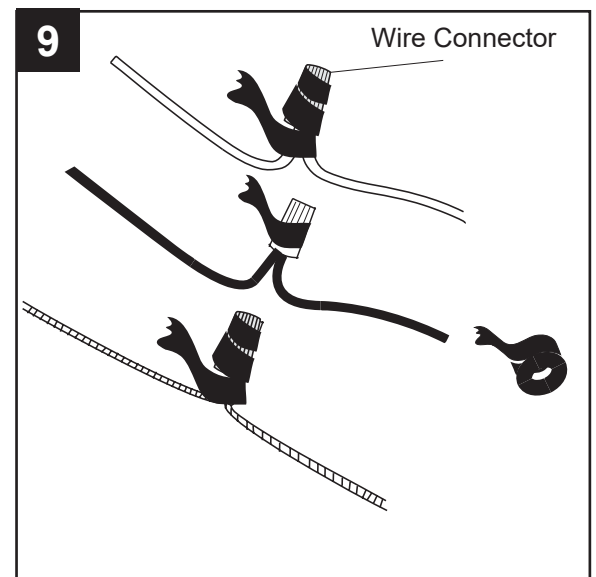


8. Secure all wiring connections together with wire connectors from remote pack (N) according to the diagram and these steps:
- Connect the green wires from the downrod, receiver, and mounting bracket (A) to the bare/green (ground) supply wire.
  - Connect the black wire from the receiver to the Black (hot/power) supply wire.
  - Connect the White from the receiver to the White (neutral) supply wire.

**Note:** If supply wires are different colors than referred to above, a professional electrician should determine the proper wiring.



9. Wrap electrical tape (not included) around each individual wire connector down to the wire.

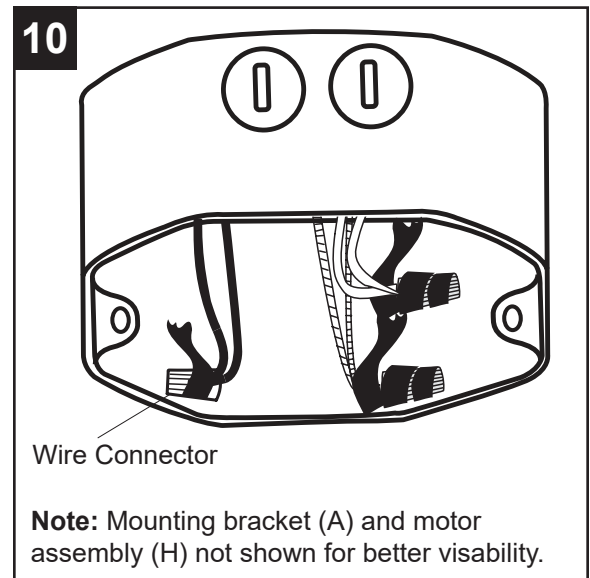




## ASSEMBLY INSTRUCTIONS

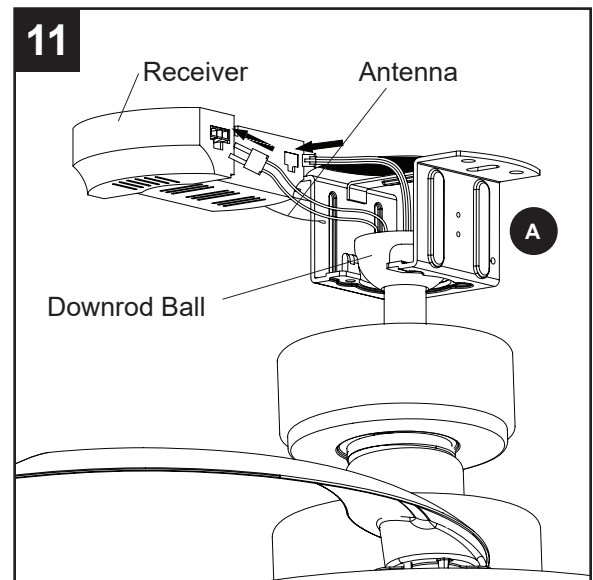
10. Turn the spliced/taped wires upward and gently push the wires and wire connectors into the outlet box.

**WARNING:** Ensure no bare wire strands are visible after making connections. Place the ground and neutral supply wire connections on opposite sides of outlet box from the hot wire connection.



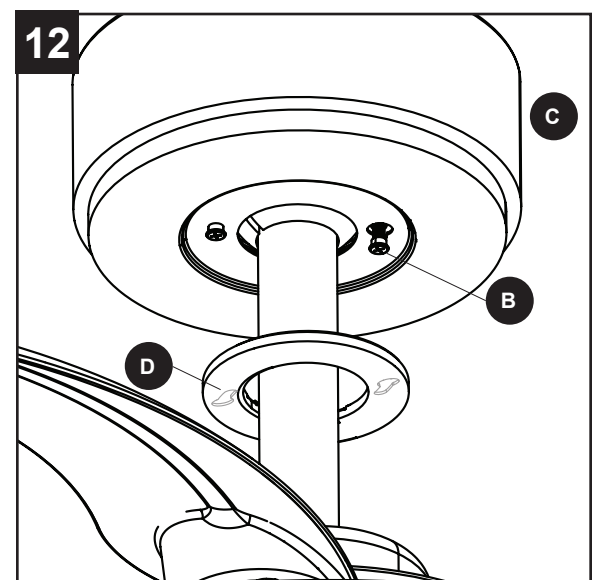
11. Connect the pin connectors on the wires from motor assembly (H) to the connector ports in the receiver from remote pack (N). Then, insert the receiver, antenna first, into the mounting bracket (A) with the flat side facing the ceiling.

**Note:** The receiver will rest directly on top of the downrod ball from downrod pack (E).



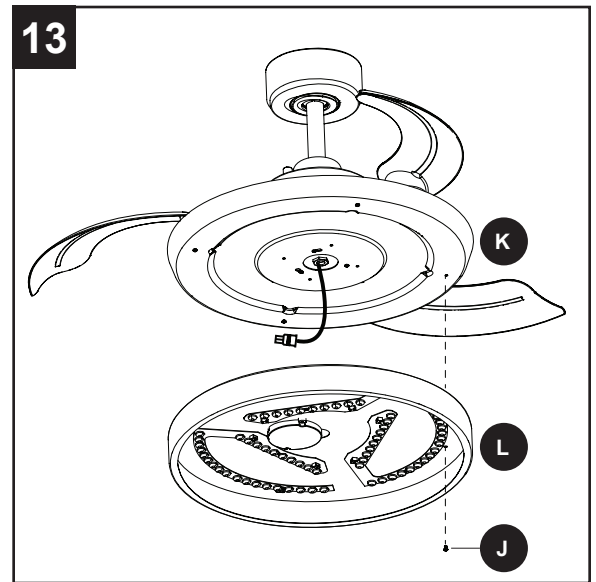
12. Remove one of the canopy screws (B) from the bottom of the mounting bracket (A). Slide the key slot in the canopy (C) over the head of the canopy screw (B) preassembled to the mounting bracket (A). Twist the canopy (C) clockwise to lock. Replace the canopy screw (B) in the round hole in the bottom of the canopy (B) and tighten both screws.

Slide the key slots in the canopy cover (D) over the heads of the canopy screws (B) preassembled to the mounting bracket (A). Twist the canopy cover (D) clockwise to lock.

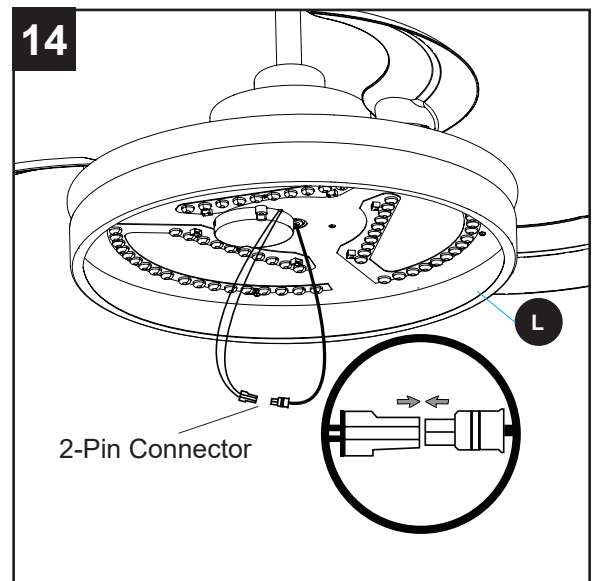


## ASSEMBLY INSTRUCTIONS

13. Remove one of the four fitter plate screws (J) preassembled to the fitter plate (K) and loosen the other three but do not remove. Feed the 2-pin connector through the center hole in the light kit (L). Align the keyhole slots in the light kit (L) with the loosened fitter plate screws (J) in the fitter plate (K). Turn light kit (L) clockwise and replace the previously removed fitter plate screw (J). Tighten all screws.



14. Connect the 2-pin connector from the fitter plate (K) to the 2-pin connector from the light kit (L).

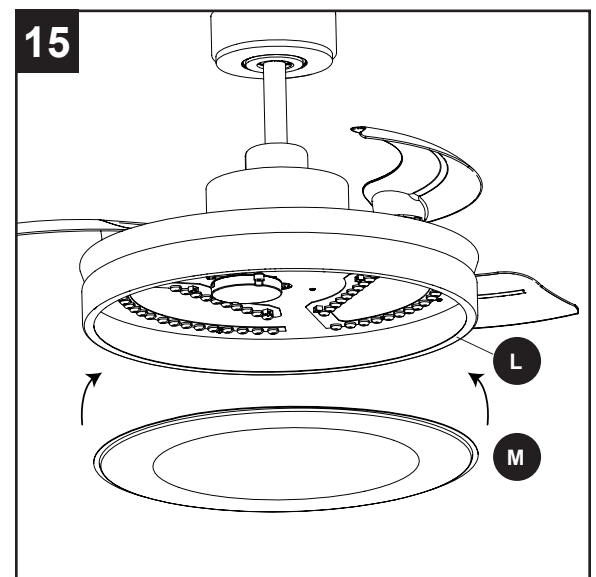


15. Bend the lens (M) just enough to fit it into the bottom edge of light kit (L).

**Note:** Do not bend so much that it forms a crease in the lens (M).

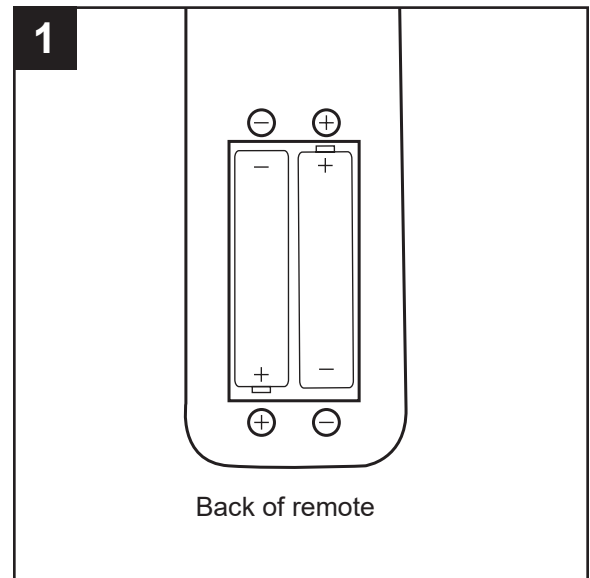
Turn on the circuit breakers and the wall switch to the fan supply line leads.

Assembly is complete.



## OPERATING INSTRUCTIONS

1. Remove the battery cover from the back of the remote found in remote pack (I). Insert the batteries from remote pack (I) into the remote; ensure polarity of battery matches the polarity indicated in the battery compartment -- positive (+) to positive (+) and negative (-) to negative (-). Replace the back cover and press the fan on/off button on the remote to ensure the LED indicator illuminates and the remote turns on the fan.



2. To operate the fan using the remote from remote pack (I), press and release the following buttons:

A - Fan On/Off

B - Fan Speed - (1 Low - 6 High)

C - Reverse Switch - Changes direction of blade rotation. Counterclockwise direction creates downward airflow for cooling effect. Clockwise direction pulls warm air from ceiling for warming effect.

D - 30 Minute Timer - Turns off fan after 30 minutes.

E - Light Color Warm

F - Dimmer - Press (-) to dim lights or (+) to brighten lights.

G - Light On/Off

H - LED Indicator

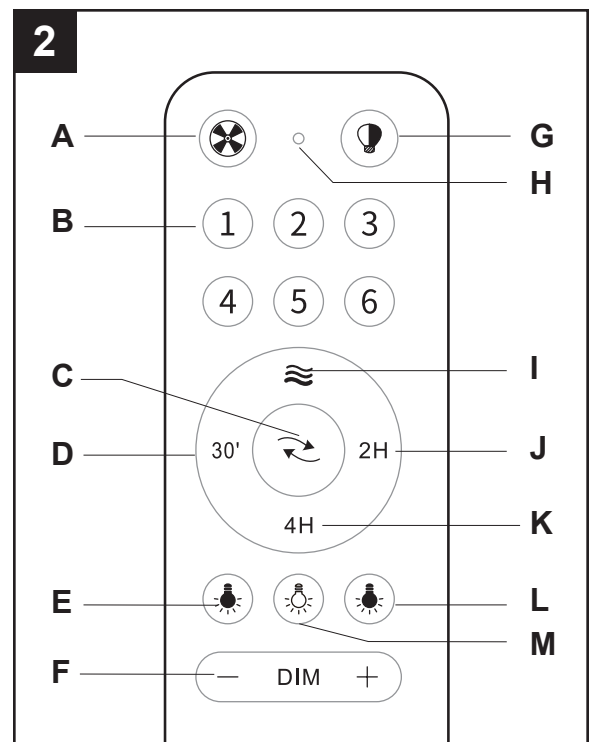
I - Variable Breeze - Simulates a breeze in nature.

J - 2-Hour Timer - Turns off fan after 2 hours.

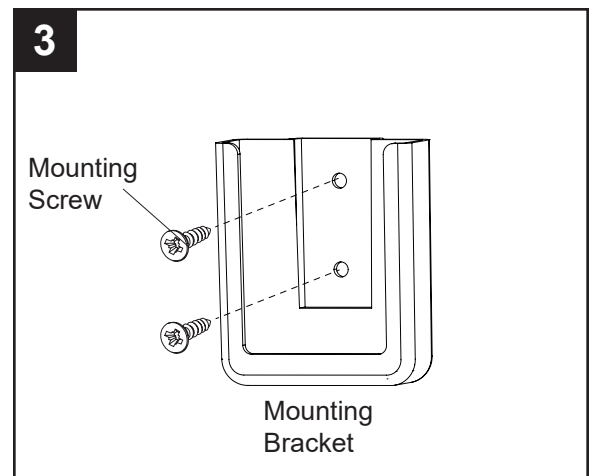
K - 4-Hour Timer - Turns off fan after 4 hours.

L - Light Color Cool

M - Light Color Daylight



3. If desired, the mounting bracket in remote pack (N) can be installed to a wall using the provided mounting screws. The remote from remote pack (N) can be stored in the mounting bracket for easy access.



## CARE AND MAINTENANCE

At least twice each year, tighten all screws on the fan. Clean the motor housing with only a soft brush or lint-free cloth to avoid scratching the finish. Clean the blades with a lint-free cloth.

Total fixture wattage is 36 watts; do not attempt to replace LED.

**Battery Replacement:** Use 1.5v (AAA) alkaline batteries. Exhausted batteries should be removed from remote. Non-rechargeable batteries should not be recharged. Do not dispose of batteries in fire, as they may explode or leak. Do not mix old and new batteries or battery types -- alkaline, standard (carbon or zinc) or rechargeable (Nickel Cadmium) batteries.

**Important:** Shut off the main power supply before you begin any maintenance tasks. Do not use water or a damp cloth to clean the ceiling fan.

## TROUBLESHOOTING

PROBLEM	POSSIBLE CAUSE	CORRECTIVE ACTION
The fan does not move.	<ol style="list-style-type: none"><li>1. The power is off or the fuse is blown.</li><li>2. There is a faulty wire connection.</li><li>3. The plugs are not connected properly.</li></ol>	<ol style="list-style-type: none"><li>1. Turn the power on or check the fuse.</li><li>2. Turn the power off. Loosen the canopy and check all connections.</li><li>3. Check that the connectors from the light kit and fan are connected properly.</li></ol>
There is excessive wobbling.	<ol style="list-style-type: none"><li>1. The fan mounting is not secure.</li></ol>	<ol style="list-style-type: none"><li>1. Lower the canopy and ensure the mounting bracket is securely fastened to the outlet box.</li></ol>
The fan operates correctly, but the lights are not working.	<ol style="list-style-type: none"><li>1. The light kit wire plugs are not connected properly.</li><li>2. There is a faulty wire connection.</li></ol>	<ol style="list-style-type: none"><li>1. Ensure that the male and female plugs in the light kit fitter are connected properly.</li><li>2. Turn the power off and check all connections at the ceiling outlet box.</li></ol>

## TROUBLESHOOTING

PROBLEM	POSSIBLE CAUSE	CORRECTIVE ACTION
The fan is noisy.	<ol style="list-style-type: none"> <li>1. The blades are loose.</li> <li>2. There is a cracked blade.</li> <li>3. A wall control is not compatible with the fan.</li> <li>4. The outlet box is not secure.</li> <li>5. The mounting bracket is not secure.</li> </ol>	<ol style="list-style-type: none"> <li>1. Check and tighten all screws that hold the fan blades to the blade arms and the motor.</li> <li>2. Replace the cracked blade.</li> <li>3. Do not connect fan to wall control.</li> <li>4. Ensure the ceiling outlet box is secured to the building structure.</li> <li>5. Ensure the mounting bracket is secured to the outlet box and that the screws are tight.</li> </ol>
Remote control does not work.	<ol style="list-style-type: none"> <li>1. Power surge may have cleared memory and remote needs to be re-synced to the receiver.</li> <li>2. Battery in remote control needs to be replaced.</li> <li>3. Interference from another remote.</li> </ol>	<ol style="list-style-type: none"> <li>1. Turn off the power at the breaker box for at least 10 seconds and then turn the power back on. Within 30 seconds, press and hold the "⊗" button on the remote for 5 seconds. The remote will beep, signaling a successful synchronization.</li> <li>2. Insert new 1.5v (AAA) alkaline batteries in battery compartment of the remote control (see page 11).</li> <li>3. If there are several fans in proximity, turn power off to other fans and re-sync the remote (see Corrective Action 1 above).</li> </ol>

## LIMITED LIFETIME WARRANTY

---

Set forth below, the manufacturer warrants the fan motor for this ceiling fan to be free from defects in workmanship and material for the life of the product. Also, subject to the limitations below, the manufacturer warrants all ceiling fan parts ("ceiling fan parts" excludes the motor and parts made in whole or in part with glass) to be free from defects in workmanship and material for a period of one year after the date of purchase by the original purchaser at retail.

All claims must be made by the original purchaser from an authorized dealer, whether such purchaser purchased the product through a store or contractor. Ceiling fan part defects must be reported within the first year from the date of purchase. Parts made in whole or in part with glass and the finishes of metal and other surfaces are not warranted.

Purchasers are responsible for all costs of removing and reinstalling the product. Any damage to any part caused by ordinary wear and tear, accident, misuse, or improper installation, is not covered by this warranty. The manufacturer assumes no responsibility whatsoever for fan installation. Any service performed by a non-licensed electrician will render the warranty invalid.

The manufacturer's sole responsibility shall be to repair or replace the motor, parts, or product within the terms stated above. The manufacturer shall not be liable for any loss or damage of any kind, including any incidental or consequential damages resulting directly or indirectly, from any breach of warranty, express or implied, or any other failure of this product. Some states do not allow the exclusion or limitation of incidental or consequential damages so this limitation may not apply to you.

If the original purchaser ceases to own the fan, this warranty is voided.

Should the purchaser encounter a problem with your fan related to defects in workmanship or materials within the warranty period associated with the defective part, the manufacturer agrees to replace the defective part without charge, or at its option, to replace the ceiling fan with a comparable or superior model.

The manufacturer's warranties are limited to the written warranties set out in this ceiling fan limited lifetime warranty. All other express and implied warranties, including, without limitation, the implied warranty of fitness for a particular purpose and the implied warranty of merchantability is disclaimed. Some states do not allow the disclaimer of implied warranties, so this disclaimer may not apply to you.

## REPLACEMENT PARTS LIST

For replacement parts, call the customer service department at **888-251-1003**, 8 a.m. - 8 p.m., EST, Monday - Sunday. You could also contact us at **ascs@lowes.com**.

PART	DESCRIPTION	5249289 PART#	5336648 PART#	COVERED UNDER WARRANTY
A	Mounting Bracket	4L000016960	4L000016960	YES - 1 year
C	Canopy	4L000016970	4L000017030	YES - 1 year
D	Canopy Cover	4L000016980	4L000017040	YES - 1 year
E	Downrod Pack	4L000016990	4L000017050	YES - 1 year
F	Yoke Cover	4L000017000	4L000017060	YES - 1 year
L	Light Kit	4L000017010	4L000017070	YES - 1 year
N	Remote Pack	4L000017020	4L000017020	YES - 1 year

