

### FEATURES

- Concealed supply connection for seamless installation
- DYNAMAX TORNADO FLUSH® utilizes 360° cleaning power to reach every part of the bowl
- High-efficiency dual flush 1.28 & 0.8 GPF (4.8 & 3.0 LPF)
- CEFIONTECT® ceramic glaze minimizes waste from sticking to porous ceramic surfaces
- Design of the bowl reduces water flow resistance resulting in a quieter flushing sound
- Universal Height
- 10" Rough-in
- Chrome plated trip lever
- Elongated front bowl and WASHLET+ S500e and tank set
- EWATER+® auto-cleans wand and bowl
- On-demand remote function cleans wand with EWATER+
- PREMIST of bowl before each use
- Remote control operated
- Auto Flush available as upgrade
- Semi-concealed trapway

### MODELS & COMPONENTS

- **MW7463046CEMFGA.10 (#01)**  
With CEFIONTECT ceramic glaze, WASHLET+ S500e with contemporary design and Auto Flush
  - **CT746CUFGT40.10**  
Elongated bowl with CEFIONTECT
  - **ST746EMA**  
Tank and cover only
  - **SW3046AT40**  
WASHLET+ S500e
  - **THU765**  
Auto Flush Kit
- **MW7463046CEMFG.10 (#01)**  
Same as MW7463046CEMFGA.10 without Auto Flush
  - **CT746CUFGT40.10**  
Elongated bowl with CEFIONTECT
  - **ST746EMA**  
Tank and cover only
  - **SW3046AT40**  
WASHLET+ S500e

#### Optional Components

- **THU773#01-A**  
Trip Lever - Cotton
- **THU773#PN-A**  
Trip Lever - Polished Nickel
- **THU773#BN-A**  
Trip Lever - Brushed Nickel

### COLORS/FINISHES

- #01 Cotton



**DYNAMAX  
TORNADO FLUSH**



**EWATER+**



**CEFIONTECT**



**Auto Flush**



**Universal Height**

### PRODUCT SPECIFICATION

The two-piece high-efficiency DYNAMAX TORNADO FLUSH toilet shall be dual flush 1.28 GPF/0.8 GPF. Toilet shall be 10" rough-in. Toilet shall have CEFIONTECT ceramic glaze and be at Universal Height. Toilet shall have elongated front bowl and Polished Chrome trip lever. Toilet shall be TOTO Model MW7463046CEMFG\_\_\_\_\_.

See SW3046AT40 Specification Sheet for details on included WASHLET.

### CODES/STANDARDS

- Meets and exceeds ASME A112.19.2/CSA B45.1, ASME A112.19.14
- Certifications: IAPMO(cUPC®), EPA WaterSense, State of Massachusetts, and others
- Code Compliance: UPC, IPC, NSPC, NPC Canada, and others
- Legislative Compliance: California Green Building Code, City of Los Angeles Water Efficiency Ordinance, and others
- ADA compliant (when installed with trip lever located on the approach side)
- Complies with CA Prop 65 warning requirements



# MW7463046CEMFG(A).10

Drake® WASHLET®+ S500e  
Close Coupled Toilet - 1.28 and 0.8 GPF - 10" Rough-in

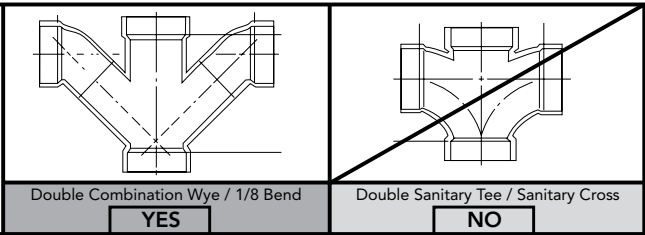
## SPECIFICATIONS

Water Use	1.28 & 0.8 GPF (4.8 & 3.0 LPF)
Flush System	DYNAMAX TORNADO FLUSH®
Min. Water Pressure	8 psi (Flowing)
Water Surface	5-5/8" x 4-1/8"
Trap Diameter	2-1/2"
Rough-in	10"
Trap Seal	2-1/8"
Warranty	One Year Limited Warranty
Material	Vitreous China
Shipping Weight	CT746CUFGT40.10 64 lbs.
	ST746EMA 35 lbs.
Shipping Dimensions	CT746CUFGT40.10 18-3/4" L x 10-1/2" W x 18-1/8"H
	ST746EMA 18-3/4" L x 8-3/8" W x 16"H

See SW3046(A)T40 Specification Sheet for details on included WASHLET.

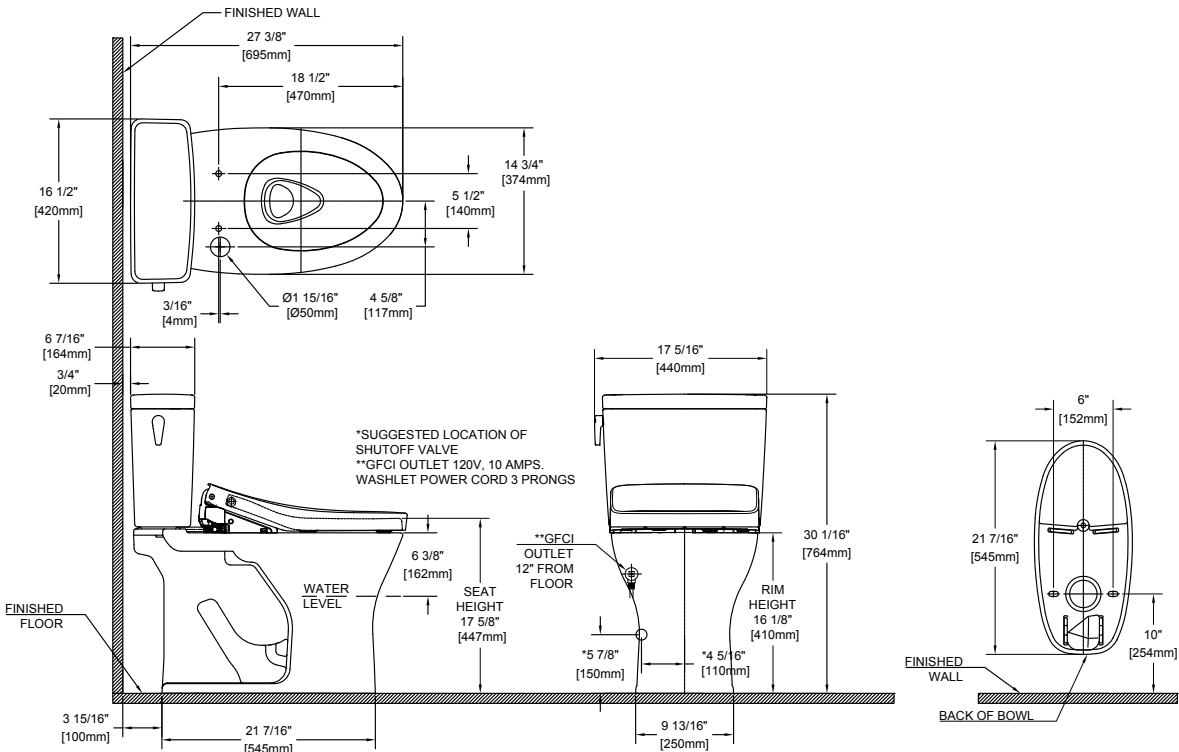
## INSTALLATION NOTES

Back-to-Back Toilet Installations:  
TOTO recommends the use of a nationally listed, double sanitary tee-wye only, in vertical waste stacks, in accordance with the stipulations noted in the majority of nationally recognized plumbing codes.



To maintain adequate wall gap between the back of the tank and wall, mount the floor flange at a nominal 12" rough-in distance.

## DIMENSIONS



**TOTO®**

These dimensions and specifications are subject to change without notice