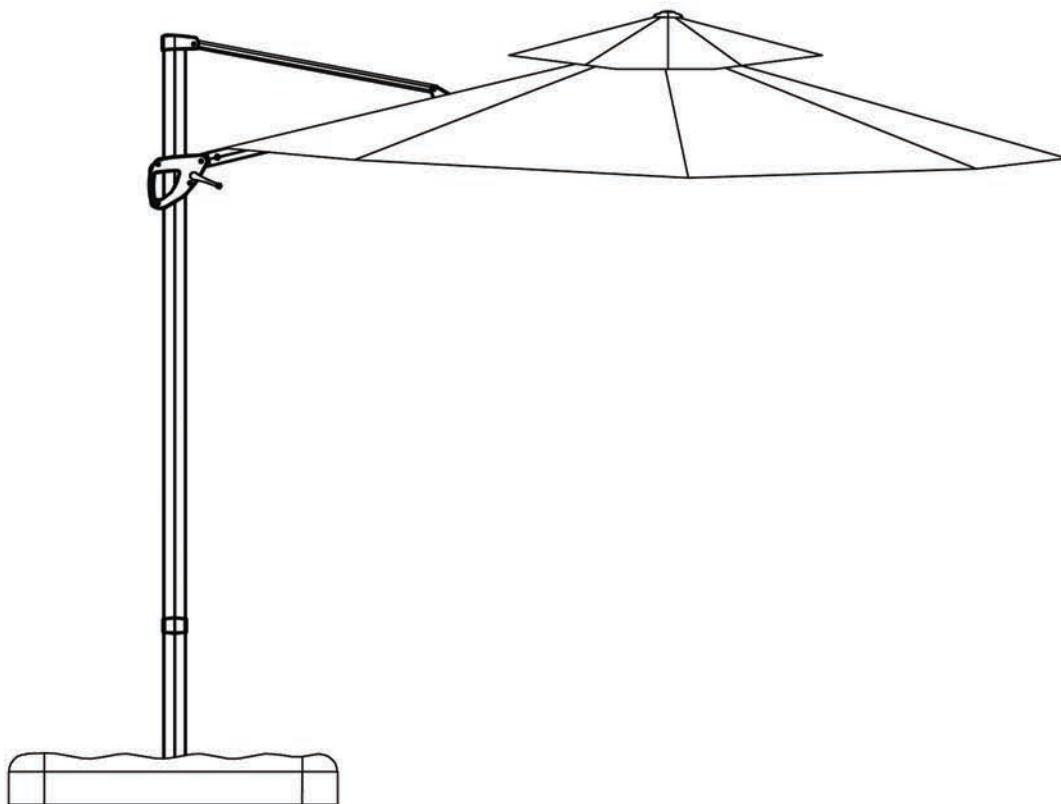




Model # YJAF-819A
YJAF-819B
YJAF-819C

USE AND CARE GUIDE

OFFSET UMBRELLA



Questions, problems, missing parts? Before returning to the store
call Royal Garden Customer Service.

6 a.m. - 9 p.m., EST, 9 a.m. - 5 p.m., PST, Monday - Friday

(866) 988-3300

WWW.ROYALGARDEN.COM

THANK YOU

We appreciate the trust and confidence you have placed in Royal Garden through the purchase of this umbrella. We strive to continually create-quality products designed to enhance your home. Visit us online to see our full line of products available for your home improvement needs.

Thank you for choosing Royal Garden!

Table of Contents

Table of Contents.....	2	Pre-Assembly	3
Safety Information	2	Planning Assembly	3
Product Caution	2	Hardware Included	3
Safety Warnings	2	Umbrella Packaging Contents.....	4
Warranty	2	Umbrella Assembly.....	5
What is Covered	2	Care and Cleaning	12
What is Not Covered	2		

Safety Information

PRODUCT CAUTION

This umbrella was made for the explicit purpose of providing outdoor functions and is not to be used as a toy. This product is intended for normal outdoor use; however, the manufacturer recommends storing and / or covering this umbrella when any formidable /severe weather is approaching. Do not locate this product near flames. Do not use this product as a support. Do not shake, lean or climb on the product. Children under the age of 10 near the product, should be supervised by a competent adult at all times. This product is NOT intended for commercial use and will void the warranty.

SAFETY WARNINGS



WARNING: Please keep children out of the assembly area before assembly.



CAUTION: Always close and secure the product when not in use and in the event of inclement weather.



WARNING: This umbrella unit is heavy, and may require two adults for safe assembly.



CAUTION: Never use the umbrella in high wind conditions. Damage to the umbrella can occur.



WARNING: Never use this product as a support. Don't shake, lean, or climb on the product at any time.



CAUTION: Keep all flame and heat sources away from this product at all times.

Warranty

1 YEAR FRAME AND 5 YEAR FABRIC LIMITED WARRANTY

WHAT IS COVERED

We warrant the frames to be free of manufacturing defects to the original purchaser for 1 year.

WHAT IS NOT COVERED

It remains the customer's responsibility for freight and packaging charges to and from our service center. This warranty does not cover commercial use, hardware, acts of nature, fire, freezing and abusive use. In addition, purchased parts are not covered under this warranty. We reserve the right to make substitutions with similar merchandise, if the model in question is no longer in production.

Contact the Customer Service Team at (866) 988-3300 or visit WWW.ROYALGARDEN.COM

Pre-Assembly

PLANNING ASSEMBLY

Read all instruction before assembly.

To avoid damaging this product, assemble it on a soft, non-abrasive surface such as cardboard.



NOTE: More than one person may be required to assemble this product.

AA



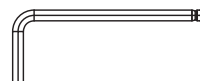
x 2

DD



x 4

GG



x 1

BB



x 1

EE



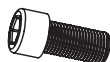
x 8

HH



x 1

CC



x 4

FF

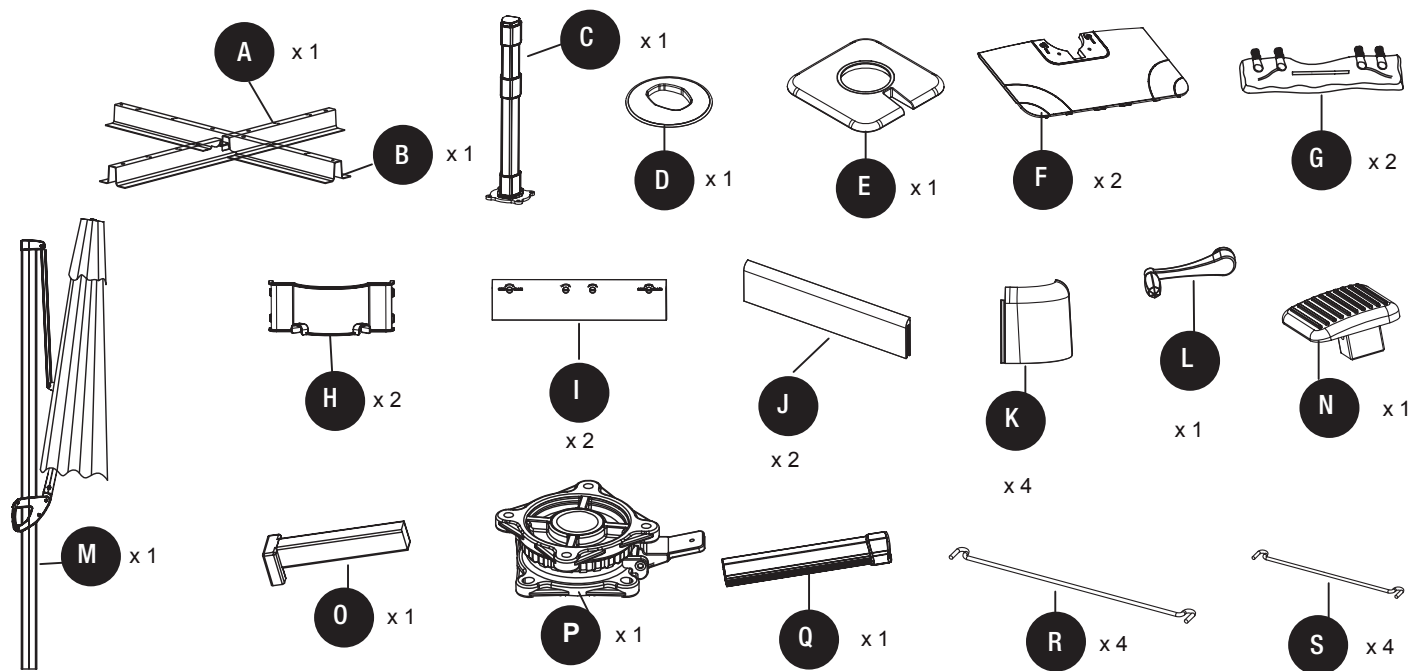


x 1

Part	Description	Quantity
AA	M 6x10 bolt	2
BB	M 6x15 bolt	1
CC	M 10x22 bolt	4
DD	M10x30 bolt	4
EE	M 10 washer	8
FF	S5 Allen Wrench	1
GG	S8 Allen Wrench	1
HH	Wrench	1

Pre-Assembly (continued)

OFFSET UMBRELLA



Part	Description	Quantity
A	Upper Bracket	1
B	Lower Bracket	1
C	Cylinder	1
D	Upper base cover	1
E	KD base cover	1
F	Lower base cover	2
G	Sand bag	2
H	Support tube rim	2
I	Lock panel	2
J	Side panel	2
K	Base Corner	4
L	Crank	1
M	Sunshade	1
N	Pedal	1
O	Support tube	1
P	Turntable	1
Q	Lower Pole	1
R	Long Steel Hook	4
S	Short Steel Hook	4

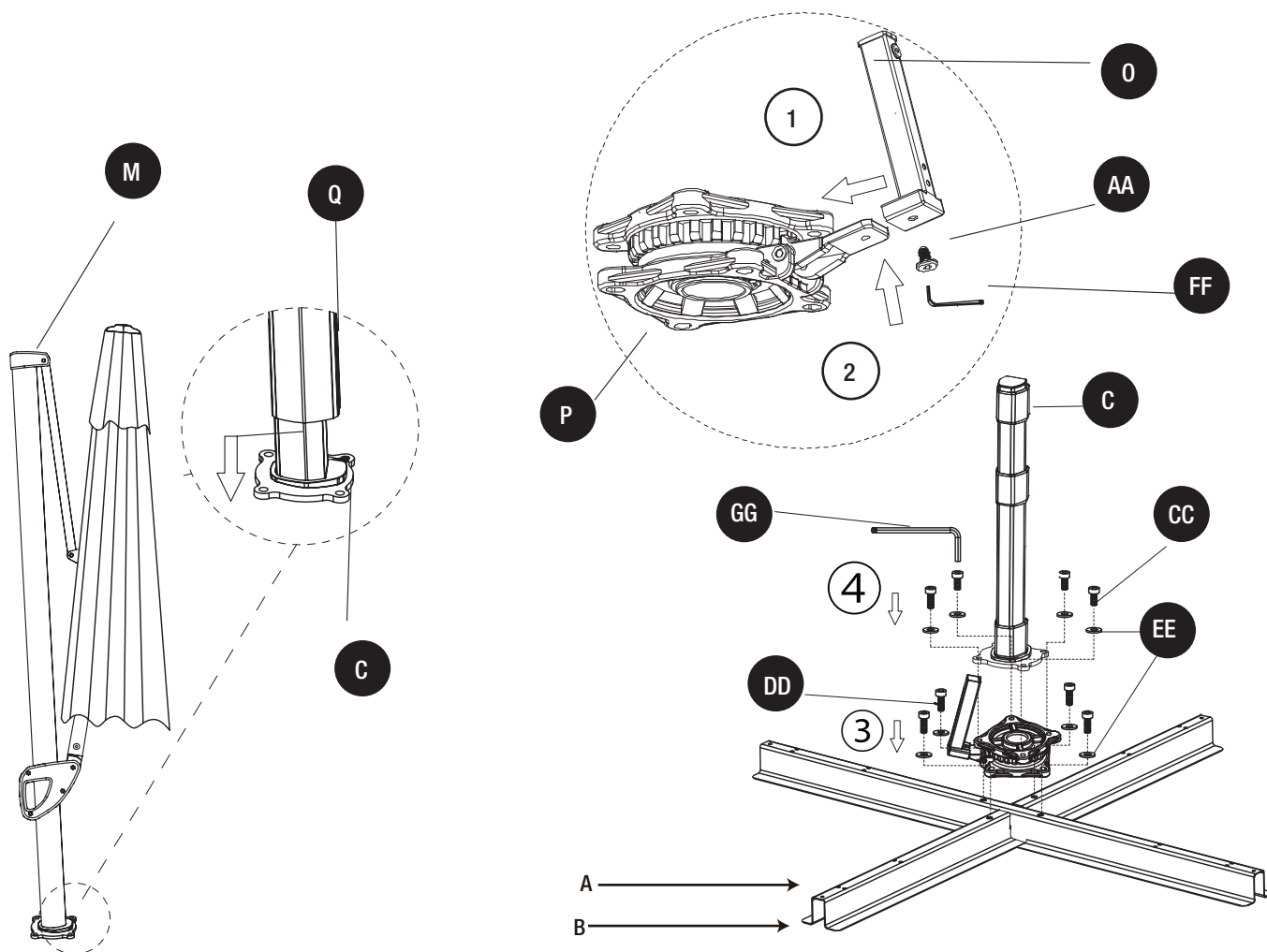
Umbrella Assembly

1 CONNECTING THE CYLINDER TO THE BRACKET

- Pull out lower pole (Q) from cylinder (C).
- Attach support tube (O) onto the turntable (P) using M6x10 combination bolts (AA).
- Attach the upper bracket (A) onto the lower bracket (B).
- Attach turntable (P) and cylinder (C) onto bracket using M10x22 (CC) and M10x30 (DD) combination bolts and M10 washer (EE).



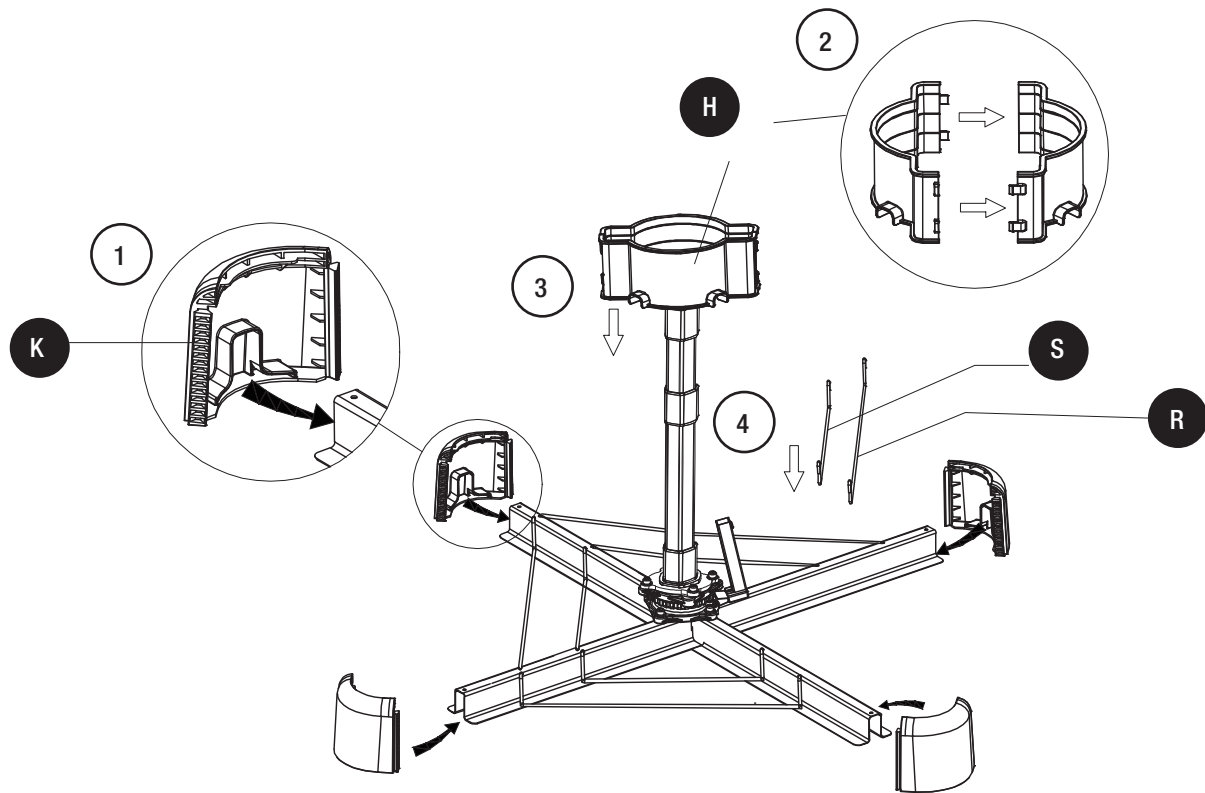
NOTE: This umbrella should be set up in its desired location to avoid moving it after assembly.



Umbrella Assembly (continued)

2 CONNECTING BASE CORNER AND SUPPORT TUBE

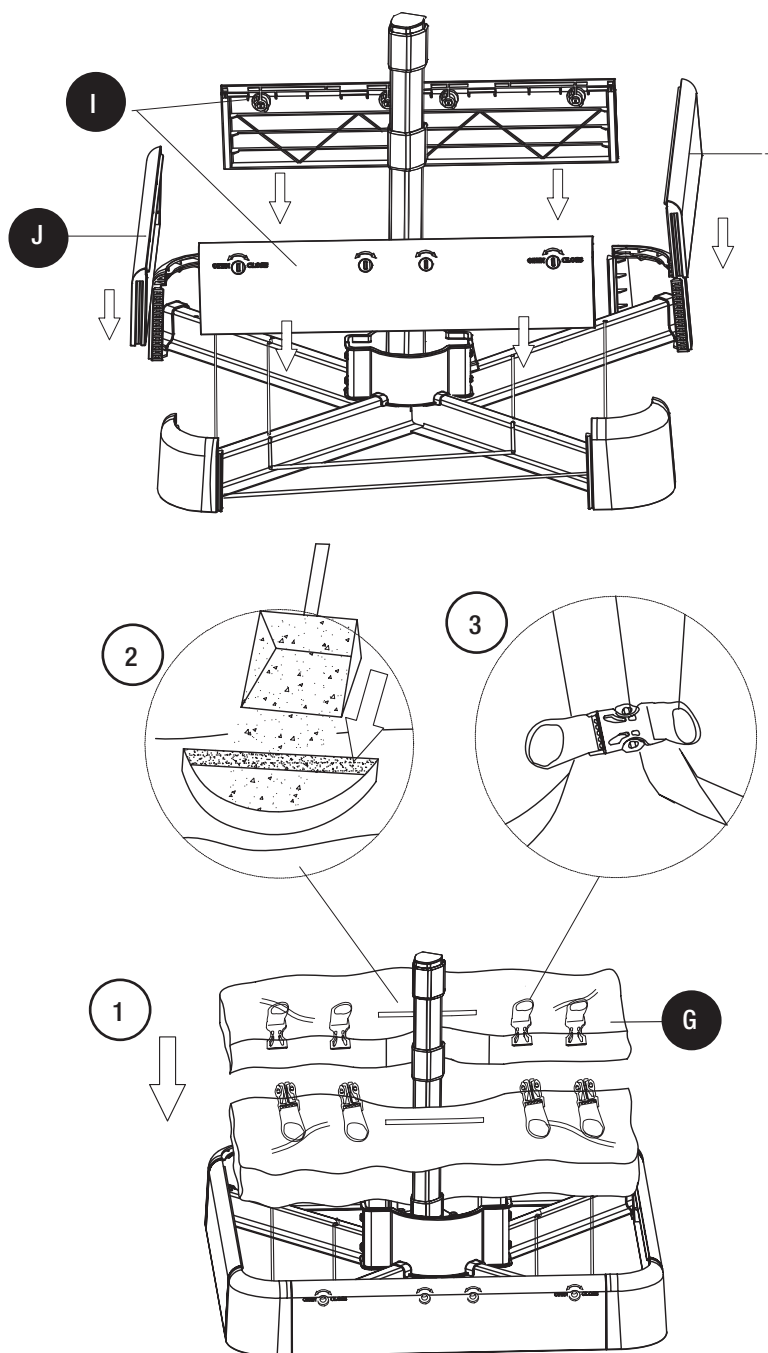
- ❑ Insert the base corner (K) into the four ends of the assembled brackets.
- ❑ Connect the two pieces of the support tube rings (H).
- ❑ Slide the support tube rim (H) down to the lower cylinder.
- ❑ Attach long steel hook (R) and short steel hook (S) onto the assembled brackets.



Umbrella Assembly (continued)

3 CONNECTING THE LOCK PANELS AND SAND BAGS.

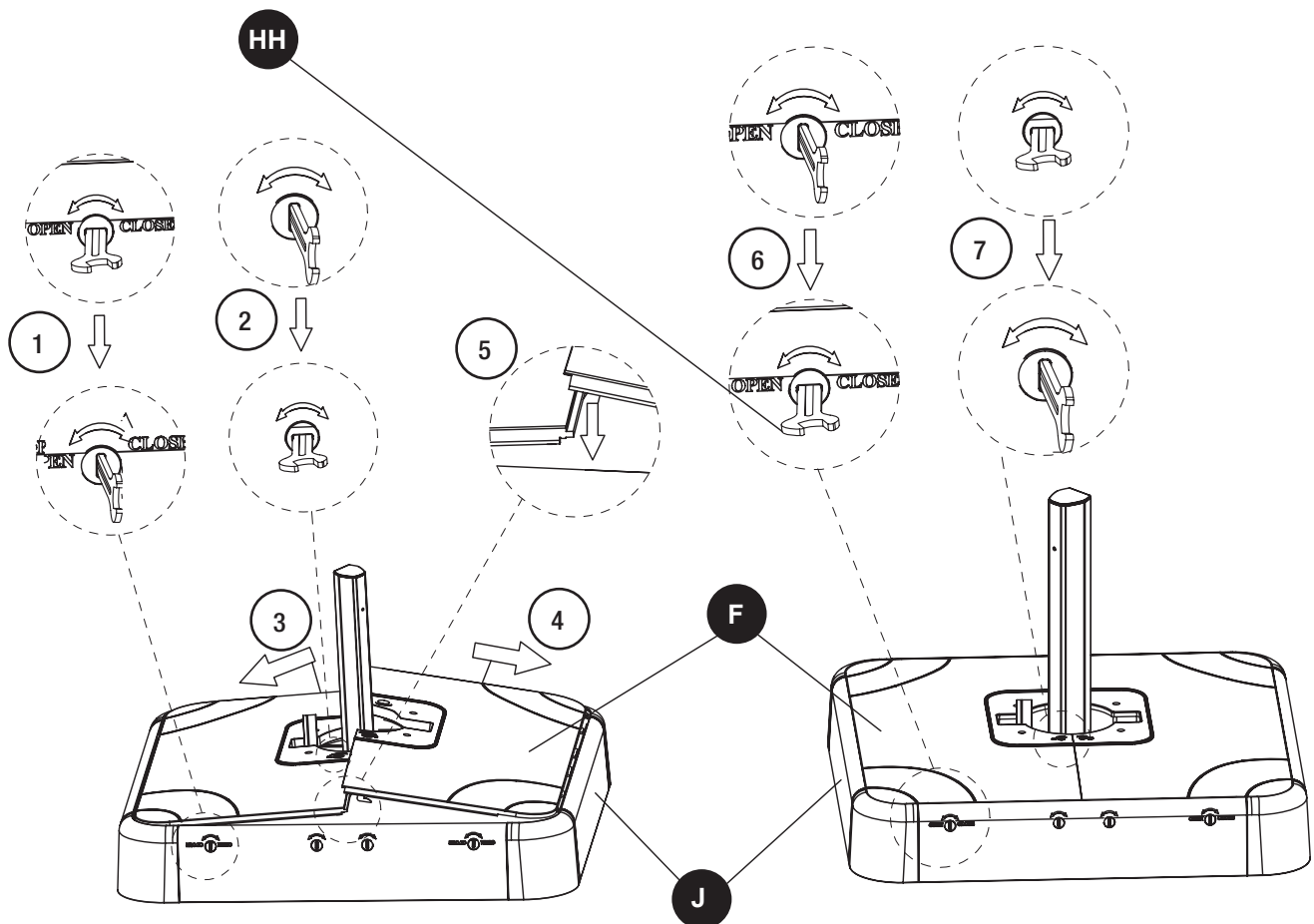
- Slide the perforated lock panels (I) and side panels (J) downward between the base corner (K).
- Place the sand bags (G) in the umbrella base. Pull to open the velcro punch on the sand bag (G) and fill with sand.
- After filling the sand bags (G), close the ouch and ensure the velcro is sealed. Lock the two sections of the sand bags (G) together.



Umbrella Assembly (continued)

4 CONNECTING THE BASE COVER

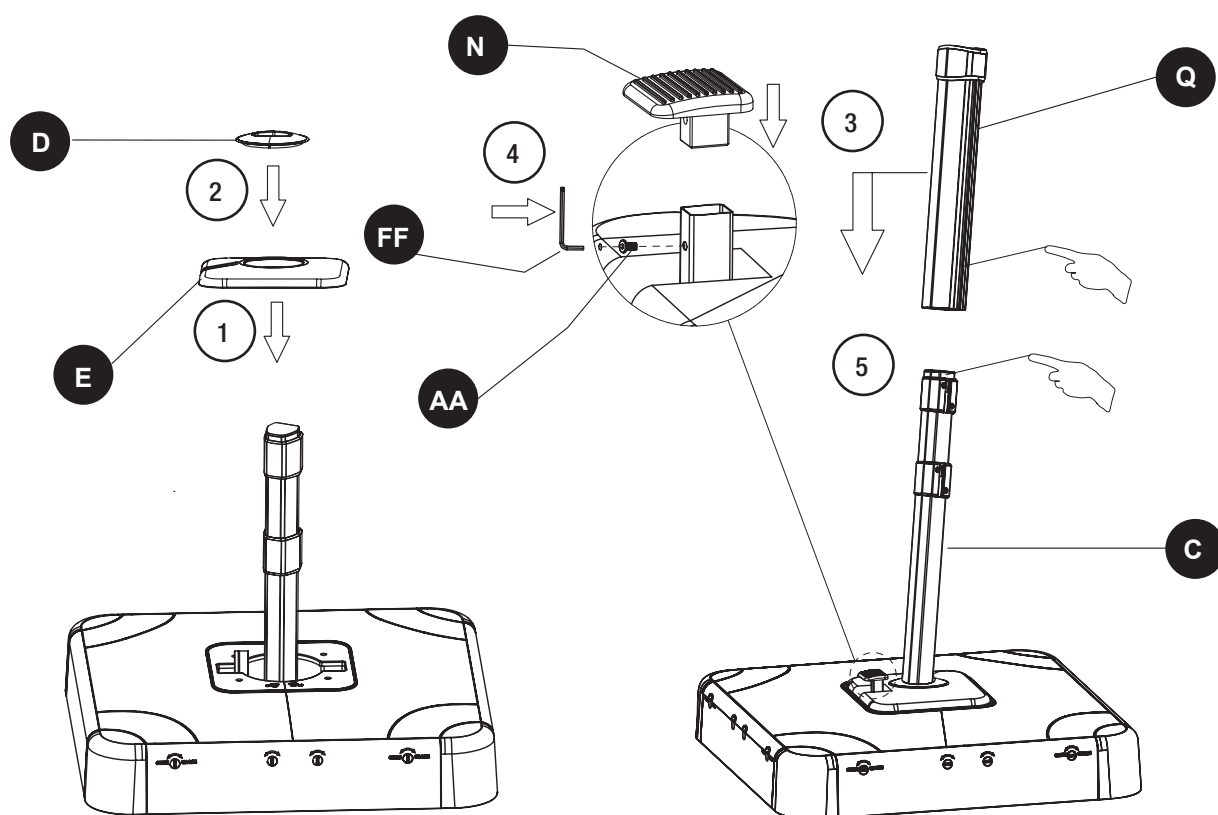
- Ensure the locking mechanism on the lock panel (I) is in the OPEN position by using the wrench (HH) as shown in figure 1.
- Ensure the locking mechanism on the lower base cover (F) is in the OPEN position by using the wrench (HH) as shown in figure 2.
- Attach the lower base cover (F) to the side panels (J).
- Close the lower base cover (F) and ensure they are fully closed. Lock the lower base cover (F) and the lock panel (I) by turning the locking mechanisms to the CLOSE position using the wrench (HH) as shown in figure 6 and figure 7.



Umbrella Assembly (continued)

5 CONNECTING BASE COVER

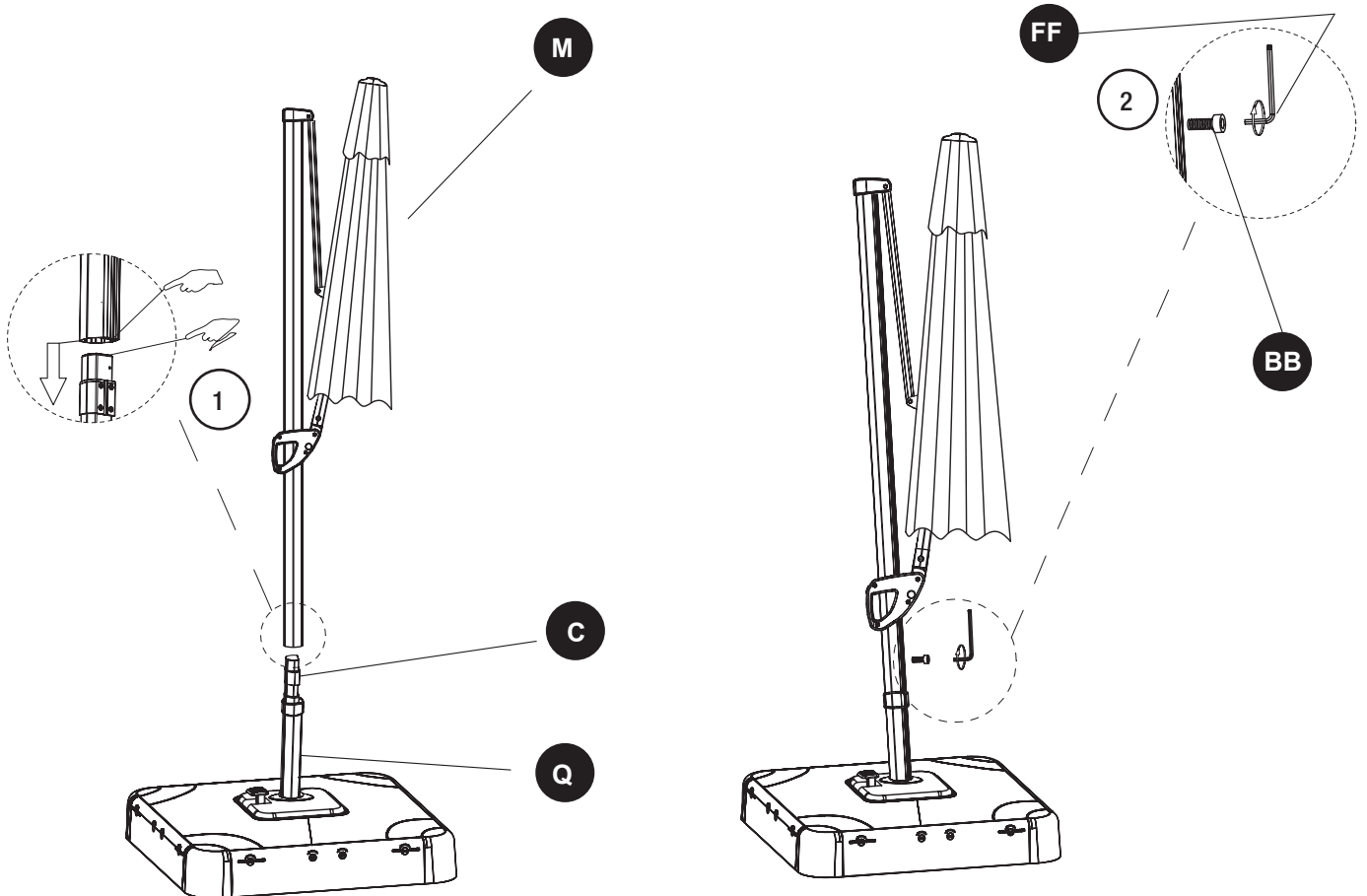
- Attach the KD base cover (E) to the assembled base then attached the upper base cover (D) on the KD base cover (E).
- Lock pedal to the assembled support using M6x10 combination bolts (AA) and S5 Allen Wrench (FF).
- Attach lower pole (Q) to cylinder (C).



Umbrella Assembly (continued)

6 CONNECTING SUNSHADE TO THE THE CYLINDER.

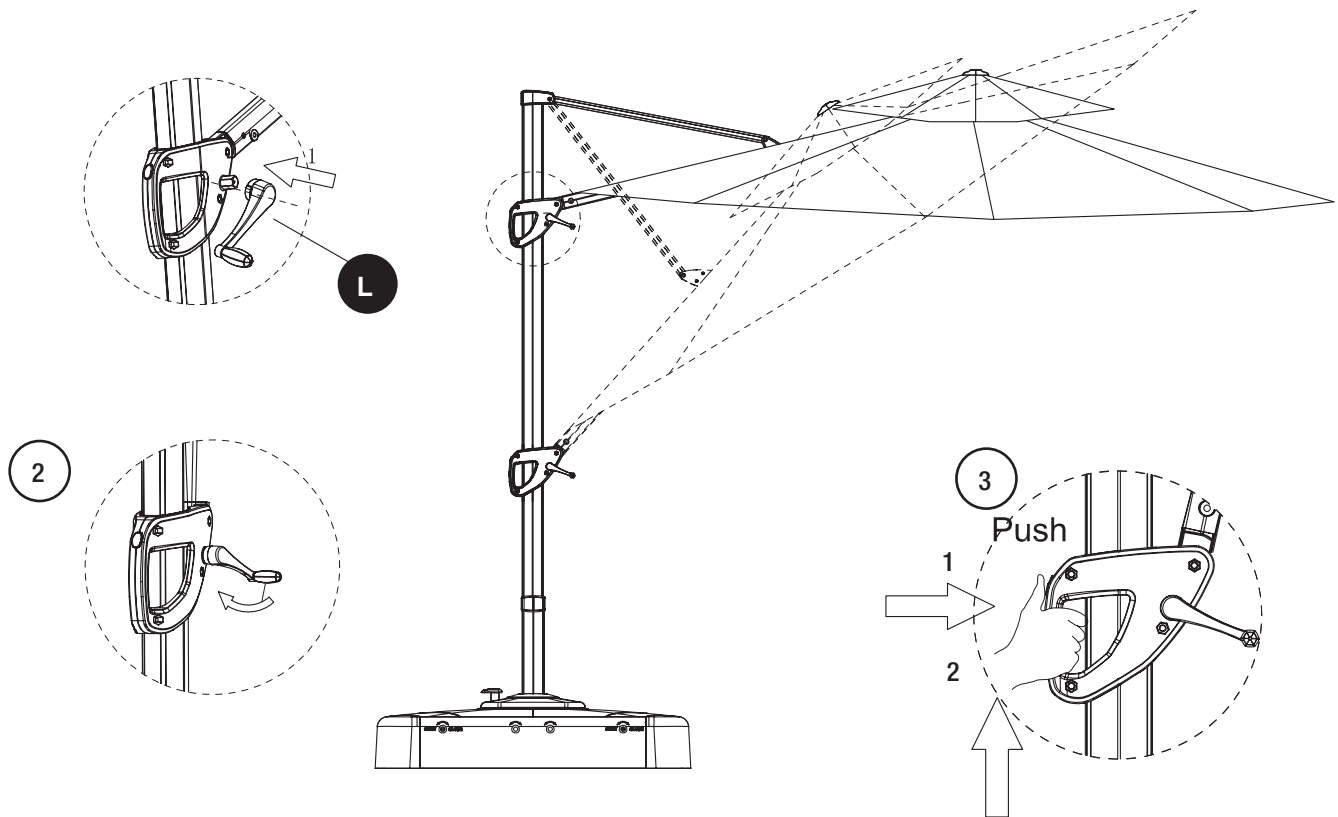
- Insert the sunshade (M) into the cylinder (C) then lock with M6x15 combination bolts (BB).



Umbrella Assembly (continued)

7 CONNECTING THE CRANK

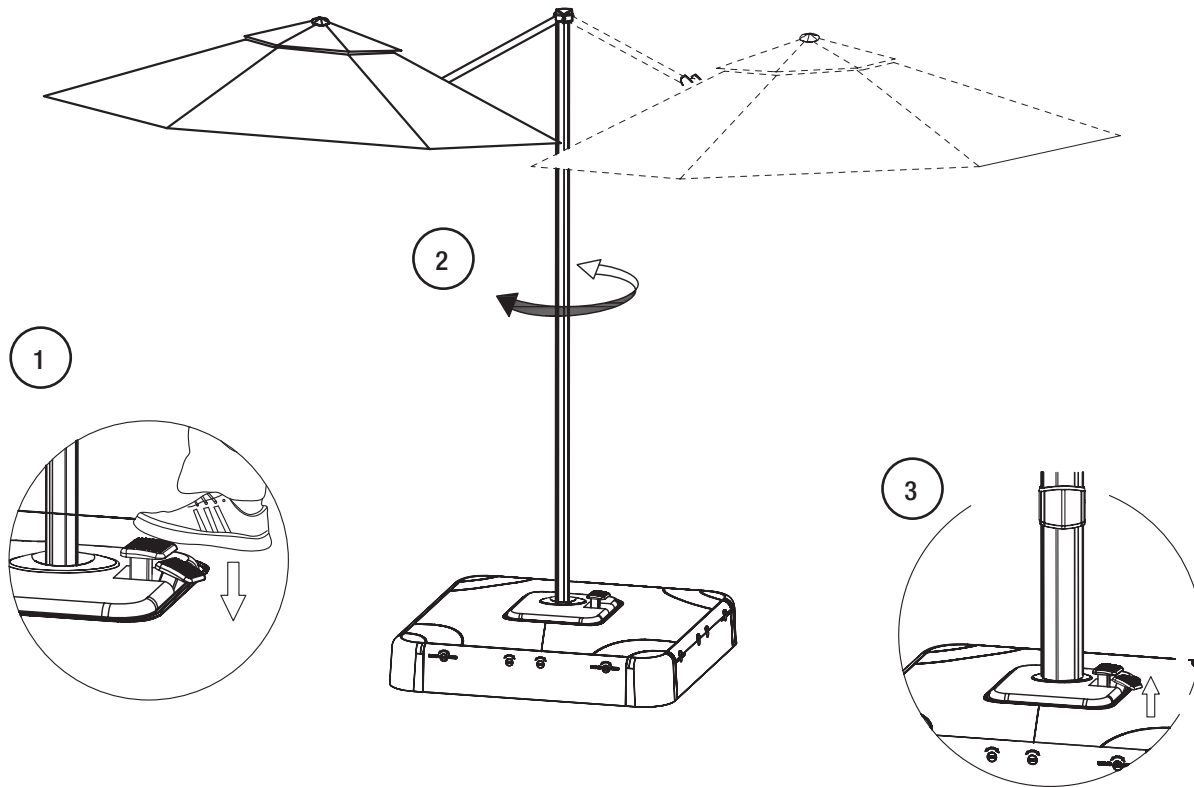
- Attach the crank (L) to the handle.



Umbrella Assembly (continued)

8 CHECKING THE SUNSHADE

- Tread the pedal to rotate the sunshade.



Care and Cleaning

- For best results, clean the frame and fabric with a damp cloth, and dry thoroughly. This will help prevent mildew by removing dirt particles that may accumulate.
- Do not clean with abrasive materials, bleach, or solvents.
- Store the umbrella in a dry, sheltered place when not in use.
- Tie the canopy closed on windy days to prevent damage to the umbrella.
- Keep the umbrella away from fire, extreme heat freezing conditions, and inclement weather such as rain, hail, sleet, snow, or wind.



Questions, problems, missing parts? Before returning to the store
call Royal Garden Customer Service.

6 a.m. - 9 p.m., EST, 9 a.m. - 5 p.m., PST, Monday - Friday

(866) 988-3300

WWW.ROYALGARDEN.COM

Retain this manual for future use.