



Fan Light Controller Instruction Manual

Remote function diagram

When the lamp is power on, long pressing "PAIR CODE" keys within five seconds as picture shows at the same time hearing on sounds and the light flashes means controller code matched successfully.

Light on and light off

The fan forward

The fan speed 1 2 3 4 5 6

Brightness control

Natural wind

Color temperature

Light and fan off

The fan reverse

Remote code matching

Segmented

Night light

Wind director

Timing 2 hours



Note: be sure to cut off the power before installation to avoid electric shock

Parts List



Expansion bolt
Hanging plate screw



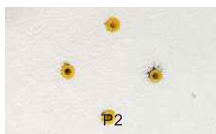
Remote



Hanging plate

Installation steps

1. Cut four holes in the ceiling, and put the yellow screw (expansion bolt) into the hole



2. Fix the hanging plate in the yellow screw with the self tapping screw.



3. Wire Connections: N(brown) and L wire(blue) is respectively connected to the left and right holes at one end of the terminal. Jone E/Gnd to middle. Then connect the wire of light. late have a test. (Turn on the power first to see if the lamp is working properly. If not, please rewire)



4. Align the 4 screw holes and fix the light to the ceiling with screws

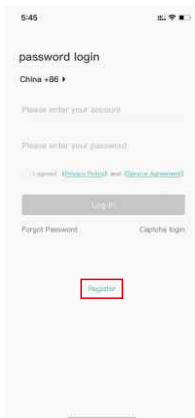


APP control

Note: No need to connect,
only open the app,
open Bluetooth.



APPDOWNLOAD



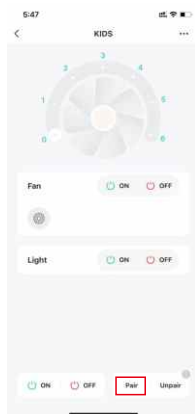
① Register an account,
then log in



② Register an account, then log in



③ Choose a category

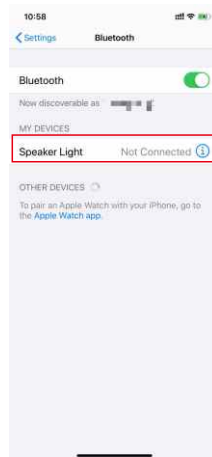


④ When the lamp is power on, pressing
keys within 5 seconds as picture shows
at the same time the light flashes means
controller code matched successfully.

Bluetooth connection

Note: If the fan light you bought does not contain Bluetooth music function, it will be invalid

1. Before using BT speaker, pls power on the product, and the BT speaker will sound "dingdong", which means that the BT speaker is waiting for pairing .
2. Touch the "Settings" icon of the phone, and then touch the "BT" icon to enter the BT settings interface. The phone will automatically search for BT products and find the "Speaker Light". Touch the "Speaker Light" icon to pair when you listen to "ding dong", you can use BT speakers.



3. Normal use BT Speaker
Note: If you need to use the Bluetooth speaker alone, please use the remote control Turn off the lights and fans. Never turn off the wall power switch.