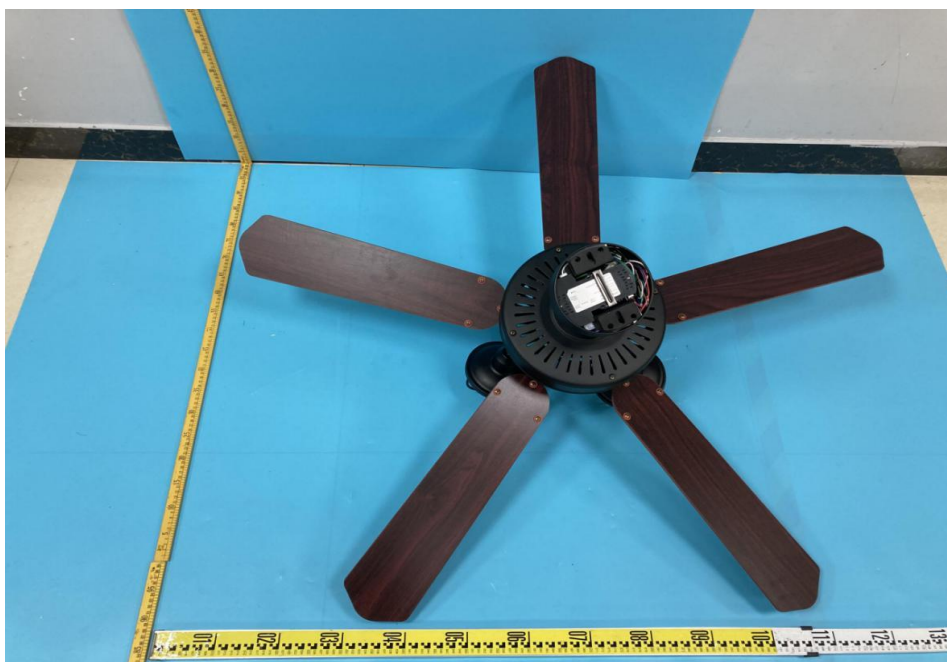


1.0 Reference and Address			
Report Number	211000213HZH-001	Original Issued: 10-Jun-2022	Revised: None
Standard(s)	Electric Fans [UL 507:2017 Ed.10+R:27May2020] Fans and Ventilators>Expires on: 01Jan2024< [CSA C22.2#113:2015 Ed.10+U1] Luminaires [UL 1598:2021 Ed.5+R:18Jun2021] Luminaires [CSA C22.2#250.0:2021 Ed.5+U1]		
Applicant	Foshan Shunde Yushengjia Electrical Co Ltd	Manufacturer 1	<b>Foshan Shunde Yushengjia Electrical Co.,Ltd.</b>
Address	No.3 QianAn Road, Jun-an Community Residents Committee Jun-an Town, Shunde, Foshan, Guangdong	Address	No.3 QianAn Road, Jun-an Community Residents Committee Jun-an Town, Shunde, Foshan, Guangdong
Country	P.R.China	Country	P.R.China
Contact	Mr. Tang or Rose Wang	Contact	Mr. Tang or Rose Wang
Phone	18928670325 or 13794036200	Phone	18928670325 or 13794036200
FAX	NA	FAX	NA
Email	1170180050@qq.com yokai@yushengjia.com	Email	1170180050@qq.com yokai@yushengjia.com

2.0 Product Description	
Product	Ceiling fan
Brand name	NA
Description	These products covered by this report are indoor use ceiling suspended fans intended for permanent installation by mounting to ceiling with direct connection to a standard ceiling outlet box and intended to be field connected with supply leads to a 120 V, 60 Hz supply source.
Models	YJ631, YJ632, YJ892, YJ359, YJ273, YJ872, YJ202, YJ002A, YJ329, YJ358, YJ316, YJ858, YJ619, YJ623, YJ631, YJ632, YJ633, YJ858A, YJ626, YJ627, YJ625, YJ628, YJ629, YJ630, YJ090, YJ091, YJ093, YJ318, YJ320, YJ3819, YJ878, YJ3986, YJ3975, YJ3913, YJ39107, YJ6882, YJ6881, YJ3808, YJ3972, YJ3959, YJ010, YJ016, YJ201, YJ871, YJ308, YJ326, YJ307, YJ319, YJ306, YJ202, YJ002A, YJ663, YJ3993, YJ651, YJ601, YJ286, YJ325, YJ868, YJ339, YJ331, YJ261, YJ605, YJ357, YJ611, YJ608, YJ603, YJ322, YJ337, YJ327, YJ352, YJ350, YJ375, YJ602, YJ616, YJ617, YJ356, YJ606, YJ236, YJ609, YJ315, YJ656, YJ652, YJ622, YJ661, YJ660, YJ657, YJ620, YJ62205, YJ665, YJ669, YJ305, YJ668, YJ667, YJ670, YJ671, YJ672, YJ673, YJ675, YJ676, YJ677, YJ678, YJ679, YJ680, YJ681, YJ682, YJ683, YJ685, YJ686, YJ687, YJ688, YJ689, YJ690, YJ691, YJ692, YJ693, YJ695, YJ696, YJ697, YJ698, YJ699, YJ801, YJ802, YJ803, YJ805, YJ806, YJ807, YJ808, YJ809, YJ810, YJ811, YJ812, YJ813, YJ815, YJ816, YJ817, YJ818, YJ819, YJ820, YJ821, YJ822, YJ823, YJ825, YJ826, YJ827, YJ828, YJ829, YJ830, YJ831, YJ832, YJ833, YJ835, YJ836, YJ837, YJ838, YJ839, YJ850, YJ851, YJ852, YJ853, YJ855, YJ856, YJ857, YJ859, YJ860, YJ861, YJ862, YJ863, YJ865, YJ866, YJ867, YJ869, YJ870, YJ873, YJ875, YJ876, YJ879, YJ880, YJ881, YJ882, YJ883, YJ885, YJ886, YJ887, YJ888, YJ889, YJ890, YJ891, YJ892, YJ893, YJ895, YJ896, YJ897, YJ898, YJ899
Model Similarity	All models have same Motor, Remote Control Receiver Models YJ631, YJ632, YJ892 identical except outlook, blade, lamp. Models YJ359, YJ273, YJ872 identical except outlook, blade. Models YJ202, YJ002A, YJ329, YJ358, YJ632 are identical, except model designation. Models YJ316, YJ858, YJ619, YJ623, YJ631, YJ632, YJ633, YJ858A, YJ626, YJ627, YJ625, YJ628, YJ629, YJ630, YJ872 are identical, except model designation. Models YJ090, YJ091, YJ093, YJ318, YJ320, YJ273 are identical, except model designation. Models YJ3819, YJ878, YJ3986, YJ3975, YJ3913, YJ39107, YJ6882, YJ6881, YJ3808, YJ3972, YJ3959, YJ892 are identical, except model designation. Models YJ010, YJ016, YJ201, YJ631 are identical, except model designation. Models YJ871, YJ308, YJ326, YJ307, YJ319, YJ306, YJ202, YJ002A, YJ663, YJ3993, YJ651, YJ601, YJ286, YJ325, YJ868, YJ339, YJ331, YJ261, YJ605, YJ357, YJ611, YJ608, YJ603, YJ322, YJ337, YJ327, YJ352, YJ350, YJ375, YJ602, YJ616, YJ617, YJ356, YJ606, YJ236, YJ609, YJ315, YJ656, YJ652, YJ622, YJ661, YJ660, YJ657, YJ620, YJ62205, YJ665, YJ669, YJ305, YJ668, YJ667, YJ670, YJ671, YJ672, YJ673, YJ675, YJ676, YJ677, YJ678, YJ679, YJ680, YJ681, YJ682, YJ683, YJ685, YJ686, YJ687, YJ688, YJ689, YJ690, YJ691, YJ692, YJ693, YJ695, YJ696, YJ697, YJ698, YJ699, YJ801, YJ802, YJ803, YJ805, YJ806, YJ807, YJ808, YJ809, YJ810, YJ811, YJ812, YJ813, YJ815, YJ816, YJ817, YJ818, YJ819, YJ820, YJ821, YJ822, YJ823, YJ825, YJ826, YJ827, YJ828, YJ829, YJ830, YJ831, YJ832, YJ833, YJ835, YJ836, YJ837, YJ838, YJ839, YJ850, YJ851, YJ852, YJ853, YJ855, YJ856, YJ857, YJ859, YJ860, YJ861, YJ862, YJ863, YJ865, YJ866, YJ867, YJ869, YJ870, YJ873, YJ875, YJ876, YJ879, YJ880, YJ881, YJ882, YJ883, YJ885, YJ886, YJ887, YJ888, YJ889, YJ890, YJ891, YJ892, YJ893, YJ895, YJ896, YJ897, YJ898, YJ899, YJ359 are identical, except model designation.
Ratings	120VAC, 60Hz, 38W (Motor), 113W (Motor with light) for model YJ631; 120VAC, 60Hz, 38W (Motor), 88W (Motor with light) for model YJ632; 120VAC, 60Hz, 38W (Motor), 138W (Motor with light) for model YJ892; 120VAC, 60Hz, 38W (Motor), 60W (Motor with light) for models YJ359, YJ273, YJ872
Other Ratings	NA

### 3.0 Product Photographs

**Photo 1** - Overall view of Ceiling Fan, model YJ631



**Photo 2** - Overall view of Ceiling Fan, model YJ631



### 3.0 Product Photographs

**Photo 3** - Overall view of Ceiling Fan, model YJ632



**Photo 4** - Overall view of Ceiling Fan, model YJ632



### 3.0 Product Photographs

**Photo 5** - Overall view of Ceiling Fan, model YJ892



**Photo 6** - Overall view of Ceiling Fan, model YJ892



### 3.0 Product Photographs

**Photo 7** - Overall view of Ceiling Fan, model YJ359



**Photo 8** - Overall view of Ceiling Fan, model YJ359



### 3.0 Product Photographs

**Photo 9** - Overall view of Ceiling Fan, model YJ273



**Photo 10** - Overall view of Ceiling Fan, model YJ273



**3.0 Product Photographs**

**Photo 11 - Overall view of Ceiling Fan, model YJ872**



**Photo 12 - Internal view of Ceiling Fan, model YJ872**



**3.0 Product Photographs**

**Photo 13** - Internal view of Remote Control Receiver, all models



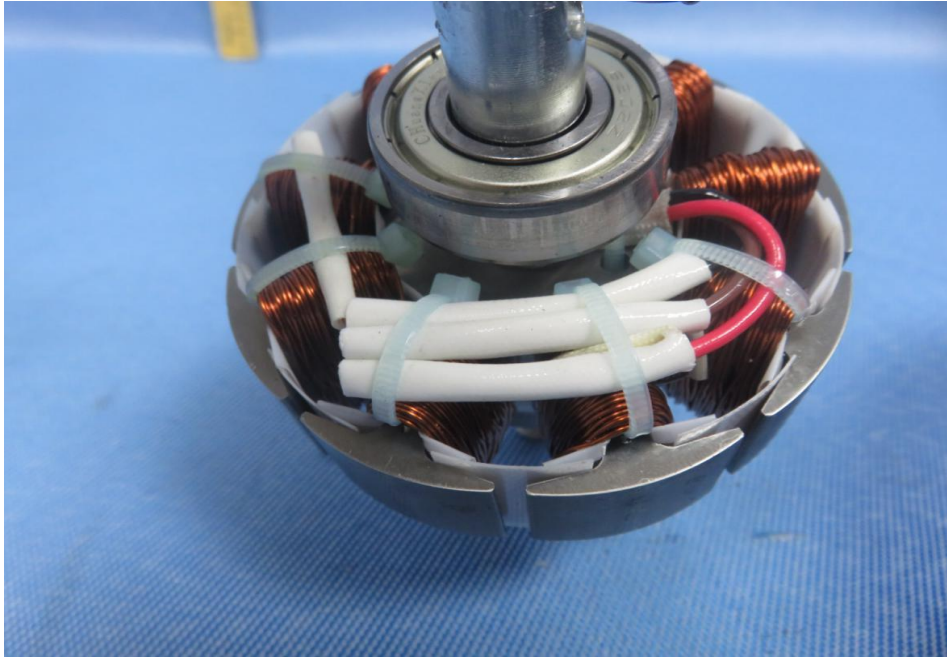
**Photo 14** - View of Motor, all models



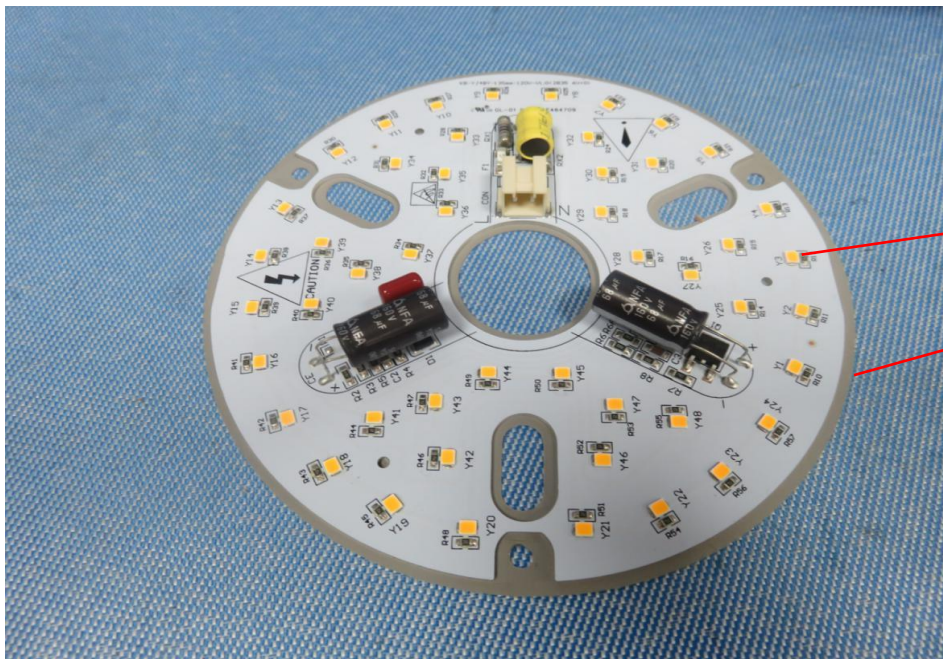
15

**3.0 Product Photographs**

**Photo 15** - Internal view of Motor, all models



**Photo 16** - Internal view of Ceiling Fan, models YJ359, YJ273, YJ872

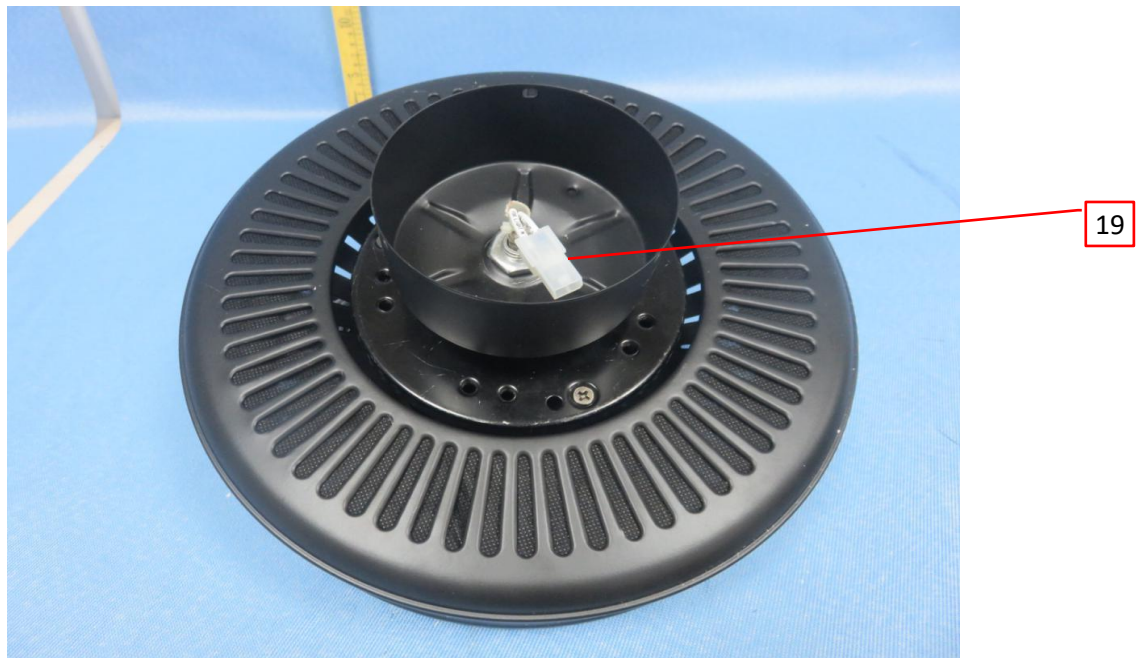


**3.0 Product Photographs**

**Photo 17 - Internal view of Ceiling Fan, model YJ631**

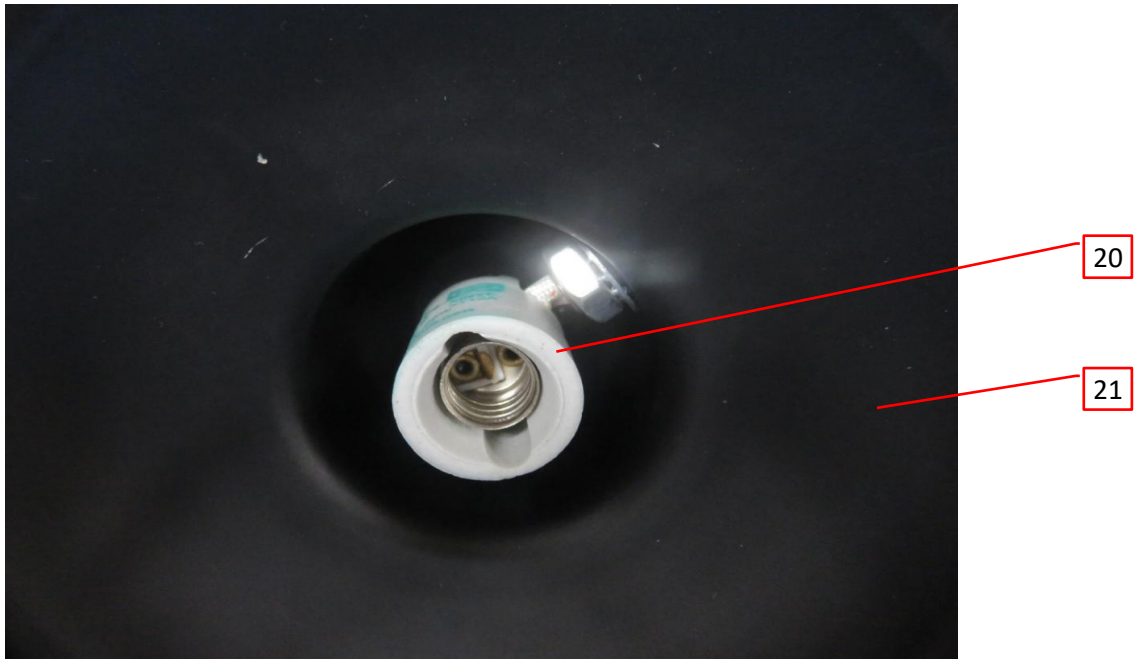


**Photo 18 - Internal view of Ceiling Fan, model YJ631**

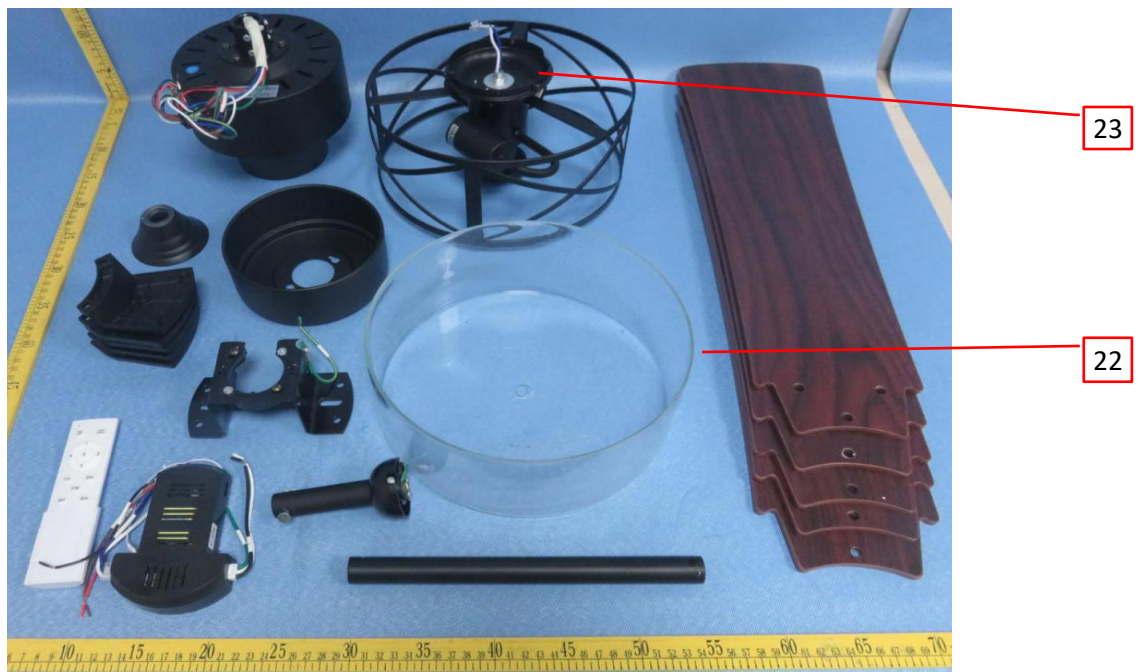


**3.0 Product Photographs**

**Photo 19** - Internal view of Ceiling Fan, model YJ631



**Photo 20** - Internal view of Ceiling Fan, model YJ632





**3.0 Product Photographs**

**Photo 23** - Internal view of Ceiling Fan, model YJ273



**Photo 24** - Internal view of Ceiling Fan, all models



26

### 3.0 Product Photographs

**Photo 25** - Internal view of Remote Control Receiver, all models



**Photo 26** - Internal view of Transformer, model EQ2612



4.0 Critical Components						
Photo #	Item no. <sup>1</sup>	Name	Manufacturer/ trademark <sup>2</sup>	Type / model <sup>2</sup>	Technical data and securement means	Mark(s) of conformity <sup>3</sup>
12	1	Mounting Bracket	Various	A3	Steel, 2.5 mm thick.	NR
12	2	Canopy	Various	A3	Steel, 0.6 mm thick.	NR
12	3	Ball Hanger	Various	Zinc alloy	2.0 mm thick.	NR
12	4	Down Rod	Various	A3	Steel, 2.0 mm thick.	NR
12	5	Adapter Cover	Various	A3	Steel, 0.6 mm thick.	NR
12	6	Coupling Yoke	Various	Aluminium alloy	3.0 mm thick.	NR
12	7	Upper Housing	Various	A3	Steel, 0.8 mm thick.	NR
12	8	Blade	Various	Wood	(For models YJ631, YJ632) 5.5mm thick.	NR
			KINGFA SCI & TECH CO LTD	JH720-GL1010	(For models YJ892), PC, Rated HB, RTI(80,80,80), 2.7mm thick.	cURus
			CHI MEI CORPORATION	PA-757(+)	(For models YJ359), ABS, Rated HB, RTI(85,80,85), 3.6mm thick.	cURus
			Various	Various	(For models YJ273), Wood, 5.5mm thick.	NR
			Various	Various	(For models YJ872), Wood, 8.0mm thick.	NR
12	9	Remote Control Receiver	Idea DC Motor Co.Ltd	AD-0540LT-DM	Rated 120V, 60Hz. Max light load 85W, Max fan load 40W.	See 5.0
12	10	Lamp Mounting Bracket	Various	A3	Steel, 0.8 mm thick.	NR
12	11	Lamp Cover	HUIZHOU WOTE ADVANCED MATERIALS CO LTD	3001	PC, Rated 5VA, RTI(80,80,80), HWI(2), HAI(0), 2.0mm thick minimum. (For models YJ359, YJ273, YJ872)	cURus
12	12	Lamp Shade	HUIZHOU WOTE ADVANCED MATERIALS CO LTD	3001	PC, Rated 94-5VA, RTI(80,80,80), HWI(2), HAI(0), 2.0mm thick minimum. (For models YJ359, YJ273, YJ872)	cURus
12	13	Lead Wire	Various	1015	300V, 105°C minimum, #18AWG.	cURus
12	14	Fiberglass Sleeving	Various	Various	Grade A silicone coated fiberglass sleeving, Rated 600V, 200°C minimum, VW-1.	cURus
14	15	Fan Motor	Foshan Shunde Yushengjia Electrical Co., Ltd	100*20	Rated 24VDC, class A, Secured to upper housing by screws and metal bracket..	See 5.0
16	16	LED Module	Idea DC Motor &LED Co.Ltd	D135	Rated Input: 120V, 60Hz, 0.5A, 22W. (For models YJ359, YJ273, YJ872) Consist of the following parts:	NR
16	16a	LED PCB	FOSHAN GUOLI OPTOELECTRONICS TECHNOLOGY CO LTD	GL-01	Rated 94V-0, 125°C, CTI=2, 1.5mm thick minimum.	cURus
			Various	Various	Single layer metal base, Rated 94V-0, 125°C, CTI=2, 1.5mm thick minimum.	cURus
16	16b	Fuse	Shenzhen JDT Fuse Industrial Co Ltd	JFC2410-xxxxFS-250V	Rated 250V, 1A, size: 6.1mm x 2.6mm x 2.6mm.	UR

4.0 Critical Components						
Photo #	Item no. <sup>1</sup>	Name	Manufacturer/ trademark <sup>2</sup>	Type / model <sup>2</sup>	Technical data and securement means	Mark(s) of conformity <sup>3</sup>
16	16c	LED	Lumileds Holding B.V.	2835W-80-6V	48 pcs provided, rated 6V, 150mA, 1W.	NR
16	16d	Wire Connector	ZHEJIANG LIANHE ELECTRONIC CO LTD	SM	Rated 250V, 5A, 85°C minimum. Suitable for wire size #18-24AWG.	cURus
16	17	Insulation Sheet	Dongguan Kuayue Electris Co Ltd	K-HC	Silicone Rubber (SIR), Rated 94V-0, RTI(150,150,150), 0.5mm thick minimum.	cURus
17	18	Blade Arm	Various	Various	(For model YJ631), Zinc alloy, 1.2mm thick.	NR
			Various	Various	(For model YJ632), Zinc alloy, 2.6 mm thick.	NR
			Various	Various	(For model YJ273), Zinc alloy, 2.0 mm thick.	NR
18	19	Connector	SHENZHEN JUNAD CONNECTOR CO LTD	C4255	Rated 600V, 9A, 85°C minimum. (For models YJ631, YJ632, YJ892)	cURus
19	20	Lampholder	JIANGMEN PENGJIANG YITUO ELECTRICAL APPLIANCE FACTORY CO LTD	TZ-81	E26, Rated 250V, 660W minimum. (For models YJ632, YJ892)	cURus
			ZHONGSHAN CITY HAO YANG ELECTRIC APPLIANCE CO LTD	HY4101	E12, Rated 125V, 75W minimum. (For models YJ631)	cURus
19	21	Lampholder Cup	Various	Various	Steel, A3, 0.8 mm thick. (For models YJ631, YJ632, YJ892)	NR
20	22	Lamp Shade	Various	Various	Glass, 4.0 mm thick. (For model YJ632)	NR
20	23	Lamp Upper Support	Various	Various	Steel, A3, 1.0 mm thick. (For models YJ632)	NR
21	24	Close end Connector	Various	Various	Splicing wire connectors, Rated 300V, 105°C minimum. Suitable for wire size #10-22AWG. (For models YJ632)	cURus
21	25	Lamp Bottom Support	Various	Various	Steel, A3, 1.0 mm thick. (For models YJ632)	NR
24	26	Secondary Support System	Various	Various	Stainless Steel, 1.2 mm O.D.	NR
1	27	Marking label (Not Shown)	Various	Various	Pressure-sensitive printed labels, Rated 80°C. Suitable for Plated Steel surface.	cURus

NOTES:

- 1) Not all item numbers are indicated (called out) in the photos, as their location is obvious.
- 2) "Various" means any type, from any manufacturer that complies with the "Technical data and securement means" and meets the "Mark(s) of conformity" can be used.
- 3) Indicates specific marks to be verified, which assures the agreed level of surveillance for the component. "NR" - indicates Unlisted and only visual examination is necessary. "See 5.0" indicates Unlisted components or assemblies to be evaluated periodically refer to section 5.0 for details.

**5.0 Critical Unlisted CEC Components**

**INSULATED COIL**

Photo #	Item no.	Name	Manufacturer/Trademark	Type / model
12	9	Remote Control Receiver	Idea DC Motor Co.Ltd	AD-0540LT-DM
Electrical Rating:			Rated 120V, 60Hz. Max light load 85W, Max fan load 40W.	Insulation class -
Component Standard used:		UL 1917 & CSA C22.2#156		

**MATERIALS LIST**

Component	Manufacturer	Type/model	Dimensions/thickness/assembly information
Input lead wire	Various	1015	Rated 600V, 105°C, 18AWG, VW-1.
Output wire	Various	1010	AWM, Rated 300V minium, 105°C minimum, 18AWG, VW-1.
		1015	
Enclosure	NINGBO LG YONGXING CHEMICAL CO LTD	FR-500A	Rated 94V-0, RTI(60,60,60), HWI(3), HAI(0), 1.5mm thick minimum.
PCB	ZHONGSHAN CAKEE PCB CO LTD	NST-03	Rated V-0, 130°C, minimum thickness:1.2mm
	Various	Various	Rated V-0, 130°C minimum, minimum thickness:1.2mm
Fuse	DONGGUAN CHEVRON ELECTRONIC TECHNOLOGY CO LTD	SBT	Rated 250V, 10A, size: 6.1mm x 2.6mm x 2.6mm.
Varistor	Dongguan City Dafu Electronics Co Ltd	NDF10D471K	Type 5, Rated 300Vac, 125°C minimum, 10mm in diameter.
	DONG GUAN CITY JIANKUN ELECTRONICS TECHNOLOGY CO LTD	10D471K	Type 5, Rated 300Vac, 125°C minimum, 10mm in diameter.
	Various	Various	Surge Protective Devices, Type 5, Rated 300Vac, 125°C minimum, 10mm in diameter.
Thermistors	HONGZHI ENTERPRISES LTD	8D-11	Rated 240V, I <sub>max</sub> =3A, I <sub>ss</sub> =3A, Class C3.
	SHANTOU HIGH-NEW TECHNOLOGY DEVELOPMNT ZONE SONGTIAN ENTERPRISE CO LTD	8D-11	Rated 240V, I <sub>max</sub> =3A, I <sub>ss</sub> =3A, Class C3.
X2 Capacitor	GUANGDONG JURCC ELECTRONICS CO LTD	MPX	Rated 275V, 110°C. 0.22μF.
		MKP	
	TENTA ELECTRIC INDUSTRIAL CO LTD	MEX	Rated 275V, 100°C. 0.22μF.
	Various	Various	X2, Rated 275V, 100°C min. 0.22μF.

**5.0 Critical Unlisted CEC Components**

Y Capacitor	Dongguan City Dafu Electronics Co Ltd	CT7 Y1	Rated 400V, 125°C. 2200pF.
	DONG GUAN CITY JIANKUN ELECTRONICS TECHNOLOGY CO LTD	JT	Rated 400V, 125°C. 2200pF.
	Various	Various	Y capacitor, Rated 400V, 125°C. 2200pF.
Transformer	ZHONGSHAN BENNIU ELECTRONIC TECHNOLOGY CO., LTD	EQ2612	Input: 120 V, 60 Hz, Output: 24 Vdc, 2 A.
-Bobbin	CHANG CHUN PLASTICS CO LTD	T375J	Rated V-0, RTI(150,150,150), HWI(1), HAI(0), 0.75mm thick minimum.
	Various	Various	
-Magnet Wire	DONG GUAN YIDA INDUSTRIAL CO LTD	xUEW/155, QA-x/155	Polyurethane, Rated 155°C.
	Various	Various	Polyurethane, Rated 155°C minimum.
	WUHU OULY ELECTRONICS CO LTD	TIW-B	Reinforced, Rated 130°C.
-Triple Insulated Wire	Various	Various	Reinforced, Rated min. 130°C.
	JINGJIANG JINGYANG INSULATING PRODUCT CO LTD	JY-133	Rated 130°C minimum. 0.05mm thickness minimum.
-Insulation Tape	Various	Various	Insulation Tape, Rated 130°C minimum. 0.05mm thickness minimum.
	SHENZHEN WOER HEAT-SHRINKABLE MATERIAL CO LTD	RSFR-H	Rated 600V minium, 125°C minimum, VW-1.
Heat shrinkable tubing	Various	Various	
	CHANGJIANG CONNECTORS CO LTD	A3961 C4201	Rated 250V, 5A, 85°C minimum. Suitable for wire size #18-24AWG.

**WINDING(S) RESISTANCE**

Winding Designation	Wire Size (φ mm)	Wire Type	Turns	Volts	Amps	DC resistance (Ω) +/- 10%:
---------------------	------------------	-----------	-------	-------	------	----------------------------

For transformer (T1):

Primary winding N1:	0.45	as above	22	--	--	--
Primary winding N2:	0.15	as above	14	--	--	--
Secondday Winding N3:	0.45	as above	8	--	--	--
Primary winding N4:	0.15	as above	6	--	--	--
Primary winding N5:	0.45	as above	9	--	--	--

5.0 Critical Unlisted CEC Components			
VERIFICATION PROCESS			
Frequency:	Annual	Test Site:	CEC
		Number of samples to test: 1	
Test Name		Test Parameters	
Dielectric Strength	Apply voltage Between		Test Voltage
	Primary to secondary circuits		1240 V AC
		Test Time	
		60 s	

INSULATED COIL				
Photo #	Item no.	Name	Manufacturer/Trademark	Type / model
14	15	Fan Motor	Foshan Shunde Yushengjia Electrical Co., Ltd	100*20
Electrical Rating:		24VDC	Insulation class A	
Component Standard used: UL 1004-1 & UL 1004-2, CSA C22.2#77 & 100				

MATERIALS LIST			
Component	Manufacturer	Type/model	Dimensions/thickness/assembly information
Main Winding	Various	Polyurethane coated copper wire	Rated 130°C minimum. See Winding Resistance for details.
Lead Wire	Various	1010	#18-22AWG, Rated 300V, 105°C minimum, 150mm maximum in length.
Slot Liner	JIANGSU YUXING FILM TECHNOLOGY CO LTD	6020	Rated VTM-2, 105°C, 0.188mm thick minimum.
	DUPONT HONGJI FILMS FOSHAN CO LTD	BP	Rated VTM-2, 105°C, 0.188mm thick minimum.
Cable Tie	Various	Various	Rated 120°C minimum.
Fiber Tube	Various	Various	Grade A silicone rubber coated fiberglass sleeving, Rated 600V, 200°C minimum, VW-1. Sleeve on lead wire connections.

WINDING(S) RESISTANCE						
Winding Designation	Wire Size (Ø mm)	Wire Type	Turns	Volts	Amps	DC resistance (Ω) +/- 10%:
Main Winding	0.55	Polyurethane coated copper wire	85	NA	NA	3.1

VERIFICATION PROCESS			
Frequency:	Annual	Test Site:	CEC
		Number of samples to test: 1	
Test Name		Test Parameters	
Winding resistance		See resistance per element above.	
Dielectric Strength	Apply voltage Between		Test Voltage
	Magnet wire and dead metal parts		1240V
		Test Time	
		60s	

## 6.0 Critical Features

Recognized Component - A component part, which has been previously evaluated by an accredited certification body with restrictions and must be evaluated as part of the basic product considering the restrictions as specified by the Conditions of Acceptability.

Listed Component - A component part, which has been previously Listed or Certified by an accredited Certification Organization with no restrictions and is used in the intended application within its ratings.

Unlisted Component - A part that has not been previously evaluated to the appropriate designated component standard. It may also be a Listed or Recognized component that is being used outside of its evaluated Listing or component recognition.

Critical Features/Components - An essential part, material, subassembly, system, software, or accessory of a product that has a direct bearing on the product's conformance to applicable requirements of the product standard.

Construction Details - For specific construction details, reference should be made to the photographs and descriptions. All dimensions are approximate unless specified as exact or within a tolerance. In addition to the specific construction details described in this Report, the following general requirements also apply.

1. Spacing - In primary circuits, 3.2 mm minimum spacing are maintained through air and over surfaces of insulating material between current-carrying parts of opposite polarity and 6.4 mm minimum between such current-carrying parts and dead-metal parts or low voltage isolated circuits.
2. Mechanical Assembly - Components such as switches, fuseholders, connectors, wiring terminals and display lamps are mounted and prevented from shifting or rotating by the use of lockwashers, starwashers, or other mounting format that prevents turning of the component.
3. Corrosion Protection - All ferrous metal parts are protected against corrosion by painting, plating or the equivalent.
4. Accessibility of Live Parts - All uninsulated live parts in primary circuitry are housed within a non-metallic enclosure constructed with no openings other than those specifically described in Sections 4 and 5.
5. Grounding - All exposed dead-metal parts and all dead-metal parts within the enclosure that are exposed are connected to the grounding lead.
6. Polarized Connection - NA
7. Internal Wiring - Internal wiring is routed away from sharp or moving parts. Internal wiring leads terminating in soldered connections are made mechanically secure prior to soldering. Recognized Component separable (quick disconnect) connectors of the positive detent type, closed loop connectors, or other types specifically described in the text of this report are also acceptable as internal wiring terminals. At points where internal wiring passes through metal walls or partitions, the wiring insulation is protected against abrasion or damage by plastic bushings or grommets.
8. Schematics - Refer to Illustration No. 3 for details.
9. Markings - The product is marked on a labeling system as described in item no. 27 of Section 4.0. The product is marked as follows:  
Applicant's name or brand name,  
model number, date of manufacturing, electrical ratings.
10. Cautionary Markings - Refer to Illustration 1,1a for details.
11. Installation, Operating and Safety Instructions - Instructions for installation and use of this product are provided by the manufacturer. Refer to Illustration No. 2 for details.

## 7.0 Illustrations

### Illustration 1 - Cautionary Markings

**CAUTION:** To Reduce The Risk Of Injury To Persons, Install Fan So That The Blade Is At Least 3.05 Meters (10 Feet) Above The Floor.

**WARNING:** To Reduce The Risk Of Fire, Electric Shock, Or Personal Injury, Mount To Outlet Box Marked "Acceptable for Fan Support of 15.9 kg (35 lbs) or less" And Use Mounting Screws Provided With The Outlet Box. Most Outlet Boxes Commonly Used For The Support of Luminaires Are Not Acceptable For Fan Support And May Need To Be Replaced. Consult A Qualified Electrician If In Doubt.

**ATTENTION:** pour réduire le risque de blessures corporelles, installez le ventilateur de manière à ce que la lame se trouve à au moins 3,05 mètres (10 pieds) au-dessus du sol.

**AVERTISSEMENT:** pour réduire le risque d'incendie, de choc électrique ou de blessure, montez sur la boîte de sortie marquée « Acceptable pour un support de ventilateur de 15,9 kg (35 lb) ou moins » et utilisez les vis de montage fournies avec la boîte de sortie. La plupart des boîtiers de sortie couramment utilisés pour le support des luminaires ne sont pas acceptables pour le support des ventilateurs et peuvent devoir être remplacés. Consultez un électricien qualifié en cas de doute.

DRY LOCATIONS ONLY/POUR EMPLACEMENTS SECS SEULEMENT

CAUTION - RISK OF FIRE/ATTENTION - RISQUE D'INCENDIE

CAUTION - RISK OF SHOCK/ATTENTION - RISQUE DE CHOC

Note: These warning should be attached on the product visible during/after installation, all letters shall be at least 2.4mm high.

### Illustration 1a - Cautionary Markings

CONSULT A QUALIFIED ELECTRICIAN TO ENSURE CORRECT BRANCH CIRCUIT CONDUCTOR  
THIS PRODUCT MUST BE INSTALLED IN ACCORDANCE WITH THE APPLICABLE INSTALLATION CODE  
BY A PERSON FAMILIAR WITH THE CONSTRUCTION AND OPERATION OF THE PRODUCT AND THE  
HAZARDS INVOLVED

*CONSULTER UN ÉLECTRICIEN QUALIFIÉ POUR VOUS ASSURER QUE LES CONDUCTEURS DE LA  
DÉRIVATION SONT ADÉQUATS CE PRODUIT DOIT ÊTRE INSTALLÉ SELON LE CODE D'INSTALLATION  
PERTINENT, PAR UNE PERSONNE QUI CONNAÎT BIEN LE PRODUIT ET SON FONCTIONNEMENT AINSI  
QUE LES RISQUES INHÉRENTS*

Note: These warning should be attached on the smallest unit package or carton, all letters shall be at least 2.4mm high.

## 7.0 Illustrations

### Illustration 2 - Manual

The texts appear this only are warning on manual , other manual instruction(such Product specification and basic features, Main Features, installation, operation instruction and so on) will be sent with this together.

## **SAFETY PRECAUTION:**

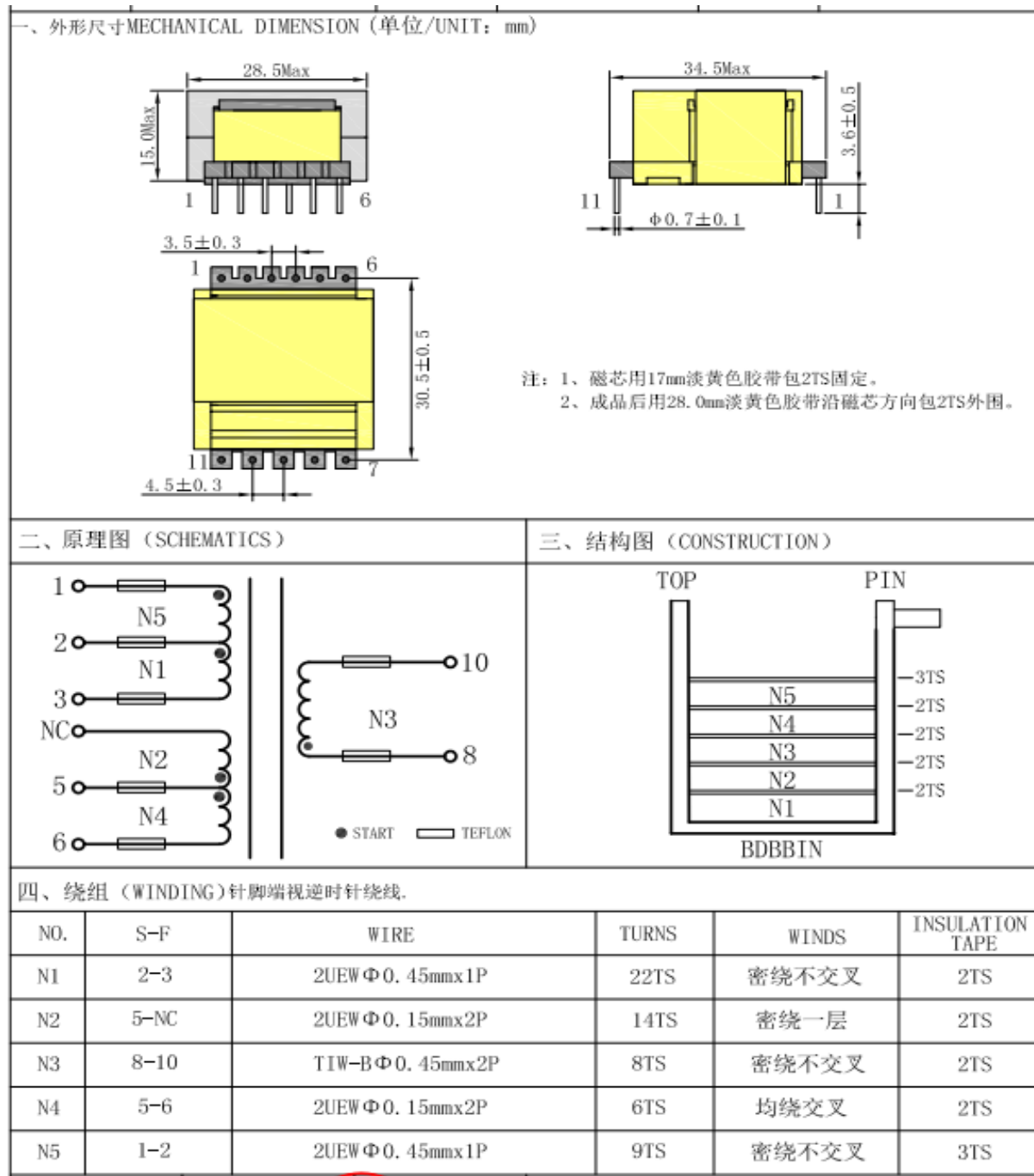
---

### **IMPORTANT : PLEASE READ BEFORE INSTALLATION**

1. The installation work must be carried out by a qualified wiring installer.
2. Turn off the Electrical Main Switch at the circuit breaker fuse box.
3. Using power supply 120V~ / 60Hz.
4. **WARNING: To Reduce The Risk Of Fire, Electric Shock, Or Personal Injury, Mount To Outlet Box Marked "Acceptable for Fan Support of 15.9 kg (35 lbs) or less" And Use Mounting Screws Provided With The Outlet Box. Most Outlet Boxes Commonly Used For The Support of Luminaires Are Not Acceptable For Fan Support And May Need To Be Replaced. Consult A Qualified Electrician If In Doubt.**
5. **CAUTION: To Reduce The Risk Of Injury To Persons, Install Fan So That The Blade Is At Least 3.05 Meters (10 Feet) Above The Floor.**
6. Do not operate the reverse switch when the fan is still in motion mode. Wait till its stop completely before switching to reverse mode.
7. Do not insert any objects in the path of the blades.
8. When all electrical connection are done, store all wires neatly.
9. Make sure all screws and connections are tightly screwed and secured.
10. The supply wires live and neutral must be connected to a double pole switch having a contact of at least 3mm in all poles.
11. **WARNING: To Reduce The Risk Of Personal Injury, Do Not Bend The Blade Brackets When Installing The Brackets, Balancing The Blades, Or Cleaning The Fan. Do Not Insert Foreign Objects In Between Rotating Fan Blades.**
12. **WARNING - To Reduce The Risk Of Electric Shock, This Fan Must Be Installed With An Isolating Wall Control/Switch.**
13. **CAUTION: To Reduce The Risk Of Electric Shock, Disconnect The Electrical Supply Circuit To The Fan Before Installing Light Kit.**

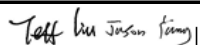
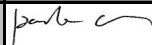

**7.0 Illustrations**

**Illustration 3 - Transformer Drawing**



<b>8.0 Test Summary</b>			
Evaluation Period	2021-10-13 to 2022-05-20		Project No. 211000213HZH
Sample Rec. Date	13-Oct-2021	Condition Prototype	Sample ID. 1210922-25-#
Test Location	Intertek Testing Services Zhejiang Ltd., Hangzhou branch 4th Floor, Building 4#, No. 22, 22nd Street, Qiantang District Hangzhou, China 310018		
Test Procedure	Testing Lab		
Determination of the result includes consideration of measurement uncertainty from the test equipment and methods. The product was tested as indicated below with results in conformance to the relevant test criteria.			
The following tests were performed:			
	UL 507:2017 Ed.10+R:27May2 020/Clause	CSA C22.2#113:201 5 Ed.10+U1/ Clause	UL 746C:2018 Ed.7/Clause
Test Description			
Leakage Current Test	41	6.8	
Continuity of Grounding Circuit Test	42	-	
Starting Current Test	44	6.10	
Input Test	45	6.3	
Temperature Test	46	6.4	
Dielectric Voltage Withstand Test	47	6.5	
Overload	-	6.6	
Locked Rotor Test	50	-	
Humidity Conditioning Test	53	6.30	
Tests of Switches and Controls	59	-	
Static Load Test For Mounting Means	60	6.20	
Component Breakdown Test	65	-	
Installation Test	74	-	
Temperature test	87.1	-	
Abnormal operation test	87.2	-	
Static load test	91.1	-	
Polymeric blades	91.3	-	
Fan blade brackets	91.4	-	
Abnormal temperature	-	6.11	
Impact test (enclosure)	-	6.29	
Resistance to Impact	-	-	22
Mold Stress Relief Distortion	-	-	29
	UL 1004-1:2012 Ed.2+R:05Nov20 20 and UL 1004- 2:2014 Ed.2+R:06Feb20 15 /Clause	CSA C22.2#100:201 4 Ed.7+U1 & CSA C22.2#77:2014 Ed.8+E1	
Test Description			
Dielectric-Voltage Withstand Test	37	--	
Locked-Rotor Temperature Test	3	--	
Endurance Test	4		
Locked-Rotor Temperature Test	--	6.4	
Endurance	--	6.6	
Dielectric Voltage Withstand Test	--	7.4	
	UL 1598:2021 Ed.5+R:18Jun202 1 & CSA C22.2#250.0:202 1 Ed.5+U1/Clause	UL 8750:2015 Ed.2+R:05Jan2 021	CSA C22.2#250.13: 2020 Ed.4+U1
Test Description			
Normal temperature test	15	-	-
Mold stree relief test	17.4	-	-
Loading	17.15	-	-
Lampholder mounting torque test	17.33	-	-
Lampholder pull test	17.34	-	-
Ground-screw assembly strength	17.39	-	-
Polymeric impact	17.41	-	-

<b>8.0 Test Summary</b>			
Dielectric voltage-withstand	18.1	-	-
Bonding circuit impedance	18.2	-	-
Input test	-	8.2	9.2
Temperature test	-	8.3	9.3
Dielectric voltage-withstand test	-	8.6	9.4
Leakage current measurement test	-	8.9	9.7
Environmental tests	-	8.14	9.12
Test Description	UL 60730-1:2016 Ed.5+R:18Oct2021 CSA E60730-1:2015 Ed.5+A1		
Protection against humid conditions	12.2		
Electric strength and insulation resistance	13		
Heating	14		
Environmental stress	16		
Endurance	17		
Resistance to heat, fire and tracking	21		
Abnormal operation	H27		
Test Description	UL 1917:2013 Ed.4+R:04Oct201 7/Clause	(R2018) [CSA C22.2#156:198 7 Ed.1+G1]/ Clause	
Temperature Test	21	6.5	
DC Offset Voltage Test	22	-	
Overload Test	23	6.3	
Endurance Test	24	6.4	
Dielectric Voltage-Withstand Test	25	6.6	
Short circuit Test	26	6.11	
Breakdown of Components Test	27	6.8	
Mould Stress Relief	-	6.7	
Leakage Current	-	6.10	
Impact	-	6.14	

<b>8.1 Signatures</b>			
A representative sample of the product covered by this report has been evaluated and found to comply with the applicable requirements of the standards indicated in Section 1.0.			
Completed by:	Jeff Liu      Jason Yang	Reviewed by:	Cloud Huang      Patrick Chen
Title:	Engineer	Title:	Reviewer
Signature:		Signature:	 

**9.0 Correlation Page For Multiple Listings**

The following products, which are identical to those identified in this report except for model number and Listee name, are authorized to bear the ETL label under provisions of the Intertek Multiple Listing Program.

BASIC LISTEE	Foshan Shunde Yushengjia Electrical Co Ltd
Address	No.3 QianAn Road, Jun-an Community Residents Committee Jun-an Town, Shunde, Foshan, Guangdong
Country	P.R.China
Product	Ceiling fan

MULTIPLE LISTEE 1	None
Address	
Country	
Brand Name	
ASSOCIATED MANUFACTURER	
Address	
Country	
<b>MULTIPLE LISTEE 1 MODELS</b>	
<b>BASIC LISTEE MODELS</b>	

MULTIPLE LISTEE 2	None
Address	
Country	
Brand Name	
ASSOCIATED MANUFACTURER	
Address	
Country	
<b>MULTIPLE LISTEE 2 MODELS</b>	
<b>BASIC LISTEE MODELS</b>	

MULTIPLE LISTEE 3	None
Address	
Country	
Brand Name	
ASSOCIATED MANUFACTURER	
Address	
Country	
<b>MULTIPLE LISTEE 3 MODELS</b>	
<b>BASIC LISTEE MODELS</b>	

## 10.0 General Information

The Applicant and Manufacturer have agreed to produce, test and label ETL Listed products in accordance with the requirements of this Report. The Manufacturer has also agreed to notify Intertek and to request authorization prior to using alternate parts, components or materials.

### COMPONENTS

Components used shall be those itemized in this Intertek report covering the product, including any amendments and/or revisions.

### LISTING MARK

The ETL Listing mark applied to the products shall either be separable in form, such as labels purchased from Intertek, or on a product nameplate or other media only as specifically authorized by Intertek. Use of the mark is subject to the control of Intertek.

The mark must include the following four items:

- 1) applicable country identifiers "US" and/or "C" or "US", "C" and "EU"
- 2) the word "Listed" or "Classified" or "Recognized Component" (whichever is appropriate)
- 3) a control number issued by Intertek
- 4) a product descriptor that identifies the standards used for certification. Example:

**For US standards**, the words, "Conforms to" shall appear with the standard number along with the word, "Standard" or "Std." Example: "Conforms to ANSI/UL Std. XX."

**For Canadian standards**, the words "Certified to CAN/CSA Standard CXX No. XX." shall be used, or abbreviated, "Cert. to CAN/CSA Std. CXX No. XX."

Can be used together when both standards are used.

**If all standards on the ATM have the same standard title**, the shared title or its abbreviation may be used in place of the examples above. Example: "Medical Electrical Equipment" or "MEE"; "Information Technology Equipment" or "ITE"; "Audio/Video Information And Communication Technology Equipment" or "A/V ICTE".

**Note: A facsimile must be submitted to Intertek, Attn: Follow-up Services for approval prior to use.**

The facsimile need not have a control number. A control number will be issued **after signed Certification Agreements** have been received by the Follow-up Services office, approval of the facsimile of your proposed Listing Mark, satisfactory completion of the Listing Report, and scheduling of a factory assessment in your facility.

### MANUFACTURING AND PRODUCTION TESTS

Manufacturing and Production Tests shall be performed as required in this Report.

### FOLLOW-UP SERVICE

Periodic unannounced audits of the manufacturing facility (and any locations authorized to apply the mark) shall be scheduled by Intertek. An audit report shall be issued after each visit. Special attention will be given to the following:

1. Conformance of the manufactured product to the descriptions in this Report.
2. Conformance of the use of the ETL mark with the requirements of this Report and the Certification Agreement.
3. Manufacturing changes.
4. Performance of specified Manufacturing and Production Tests.

In the event that the Intertek representative identifies non-conformance(s) to any provision of this Report, the Applicant shall take one or more of the following actions:

1. Correct the non-conformance.
2. Remove the ETL Mark from non-conforming product.
3. Contact the issuing product safety evaluation center for instructions.

### 10.1 Evaluation of Unlisted Components

Because Unlisted Components are uncontrolled, and they do not fall under a third party follow up program, Intertek may require these components to be tested and/or evaluated at least once annually, more often for certain components, as part of the independent certification process. The Unlisted Components in Section 5.0 require testing and/or evaluation as indicated.

**The Applicant will be notified, in writing, via the applicable contact methods, as defined in Section 1.0, when these components must be selected and sent to Component Evaluation Center (CEC) for re-evaluation.**

**Due to particular testing requirements, some components may be requested to be shipped to specific labs. Thus, specific shipment destination(s) for each sample will be provided in the written notification.**

Managing CEC Location:  
Intertek Testing Services Shanghai Limited  
ETL Component Evaluation Center  
Building No. 86, 1198 Qinzhou Road (North)  
Shanghai 200233, China  
Attn: Ms. Emiliana Zhou

Sample Disposition: Due to the destructive nature of the testing, all samples will be discarded at the conclusion of testing unless, the manufacturer specifically requests the return of the samples. The request for return must accompany the initial component shipment.

**11.0 Manufacturing and Production Tests**

The manufacturer agrees to conduct the following Manufacturing and Production Tests as specified:

**Required Tests**

Dielectric Voltage Withstand Test;  
Grounding Continuity Test

**11.1 Dielectric Voltage Withstand Test**

Method

One hundred percent of production of the products covered by this Report shall be subjected to a routine production line dielectric withstand test.

The test shall be conducted on products, which are fully assembled. Prior to applying the test potential, all switches, contactors, relays, etc., should be closed so that all primary circuits are energized by the test potential. If all primary circuits cannot be tested at one time, then separate applications of the test potential shall be made.

The test voltage specified below shall be applied between primary circuits and accessible dead-metal parts. The test voltage may be gradually increased to the specified value but must be maintained at the specified value for one second or one minute as required.

Test Equipment

The test equipment shall incorporate a transformer with an essentially sinusoidal output, a means to indicate the applied test potential, and an audible and/or visual indicator of dielectric breakdown.

The test equipment shall incorporate a voltmeter in the output circuit to indicate directly the applied test potential if the rated output of the test equipment is less than 500VA.

If the rated output of the test equipment is 500VA or more, the applied test potential may be indicated by either:

- 1 - a voltmeter in the primary circuit;
- 2 - a selector switch marked to indicate the test potential; or
- 3 - a marking in a readily visible location to indicate the test potential for test equipment having a single test potential output.

In cases 2 and 3, the test equipment shall include a lamp or other visual means to indicate that the test potential is present at the test equipment output. All test equipment shall be maintained in current calibration.

**Products Requiring Dielectric Voltage Withstand Test:**

<u>Product</u>	<u>Test Voltage</u>	<u>Test Time</u>
All products covered by this Report.	1000 Vac	60 s
	or	
	1200 Vac	1 s

**11.2 Grounding Continuity Test**

Method

Each product listed below shall be subjected to a test to determine that there is continuity between accessible dead-metal parts of the product and the grounding pin or blade of the attachment plug.

If all accessible dead metal is connected, only a single test need be performed. A visual or audible device (ohmmeter, buzzer, etc.) may be used to indicate grounding continuity.

**Products Requiring Grounding Continuity Test:**

All products covered by this Report.

