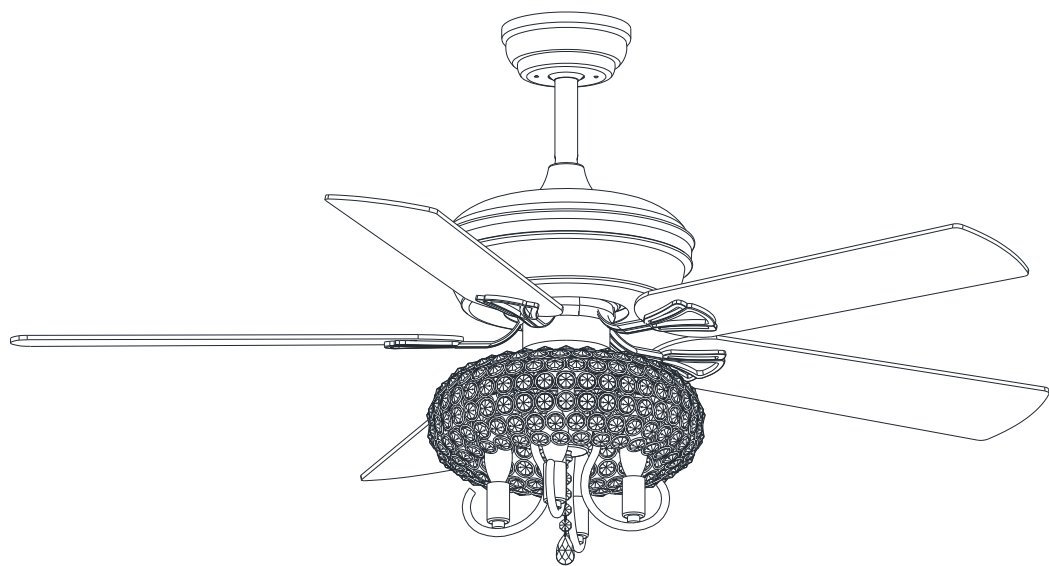


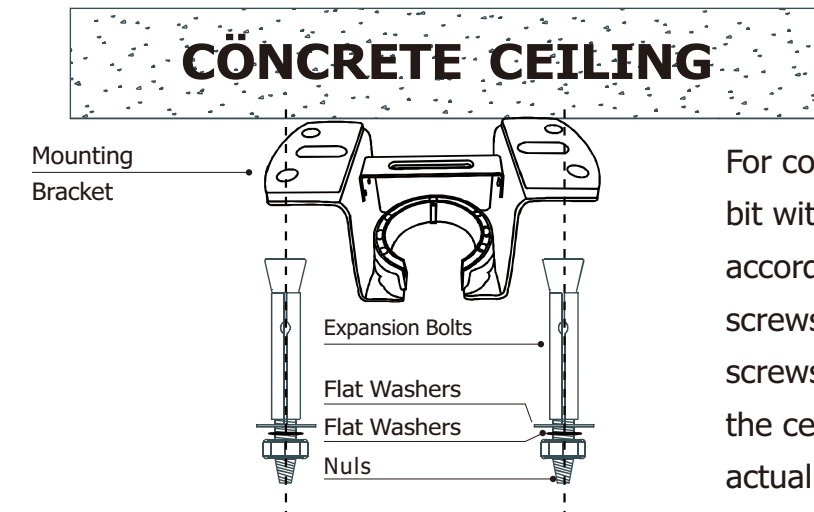
CUCULIDAE

CEILING FAN



52-INCH DEROCATE CEILING FAN USE AND CARE GUIDE

Installation of the hanging bracket

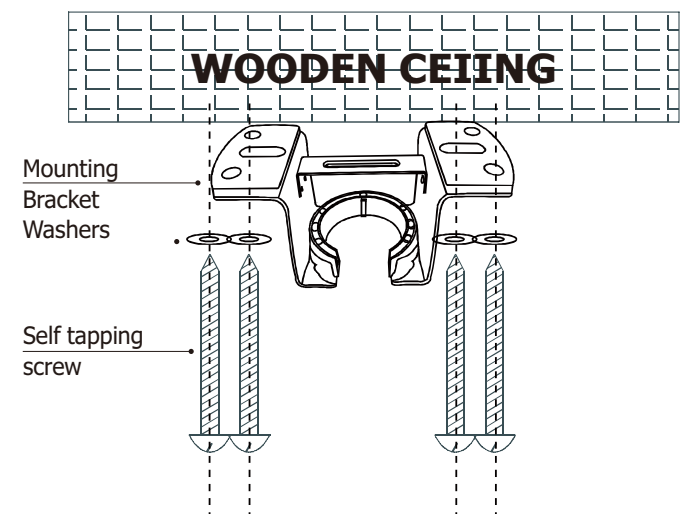


For concrete ceiling, use the percussion bit with diameter 8mm to drill holes according to the length of expansion screws. Then use the attached expansion screws to fix the hanging bracket onto the ceiling (selection is made according to actual requirements of the customers).

STEP 1 A-CONCRETE CEILING

SWITCH OFF THE ELECTRICAL MAINS AT THE CIRCUIT BREAKER FUSE BOX.
1)Use the Mounting Bracket as a guide, mark the spots where the 4 Expansion Bolts will be drilled.
2)Remove the Mounting Bracket , drill 2 holes and insert 2 Expansion Bolts into the concrete ceiling, install the mounting bracket and secure with Flat Washers , Spring Washers and Nuts .

IMPORTANT : SCREWS & NUTS MUST BE TIGHTENED TILL SNUG

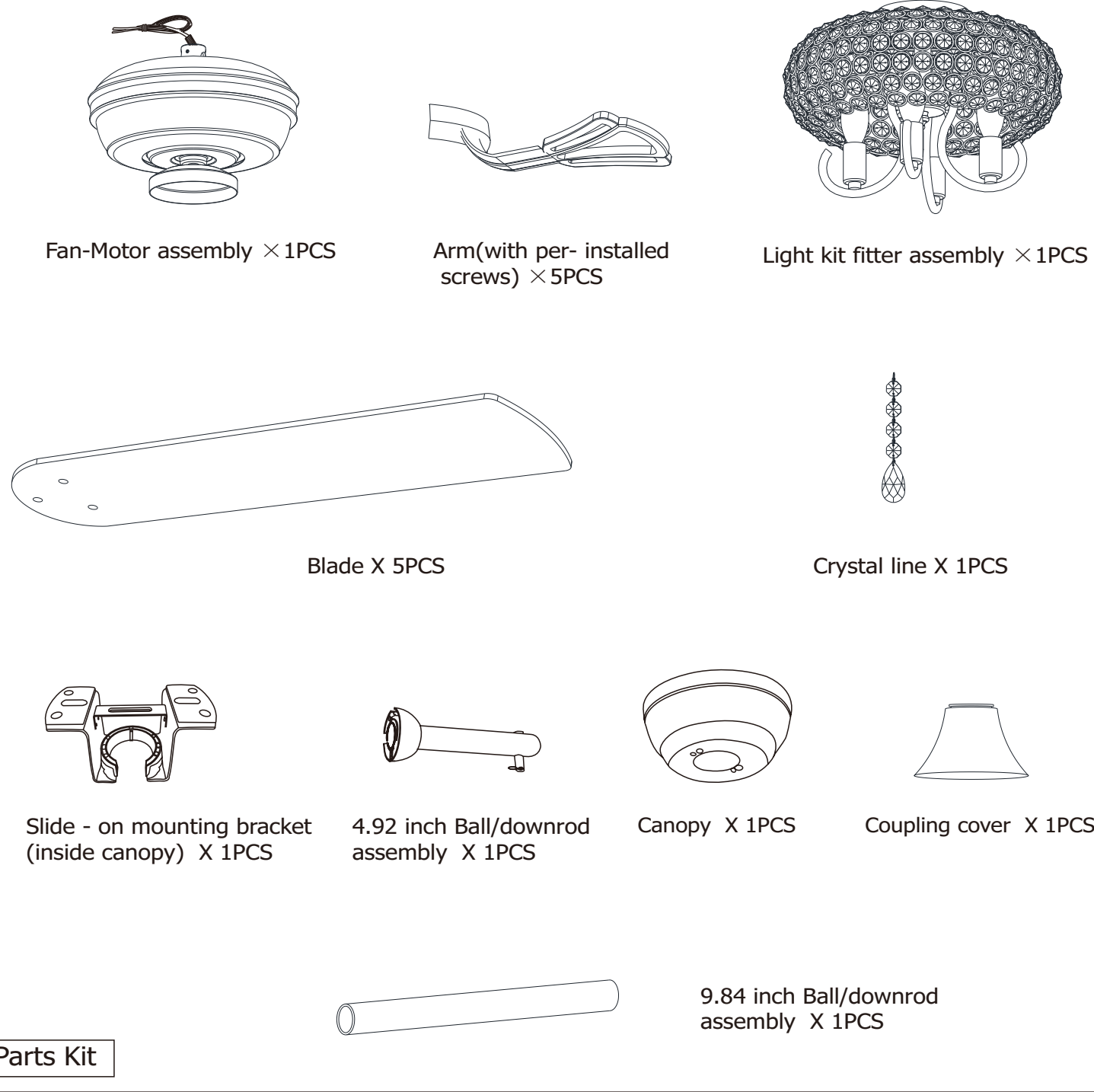


STEP 2 A-WOODEN CEILING

SWITCH OFF THE ELECTRICAL MAINS AT THE CIRCUIT BREAKER FUSE BOX.

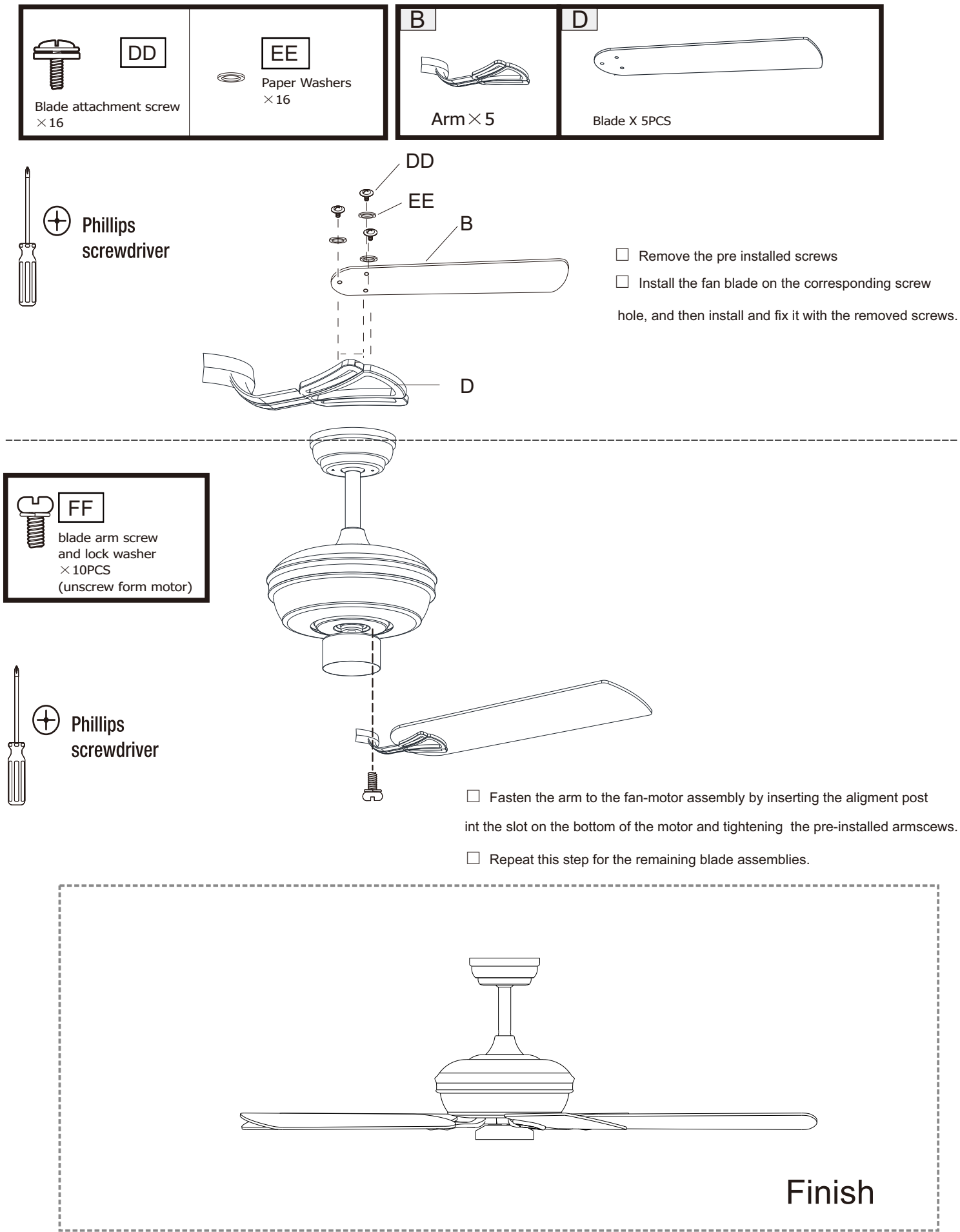
1) Use the Mounting Bracket as a guide, mark the spots where the 4 Self Tapping Screws will be drilled.
2) Remove the Mounting Bracket , drill 4 holes for 3MM diameter, install the mounting bracket onto wooden ceiling with the 4Self Tapping Screws &Washers

Pre-Installation

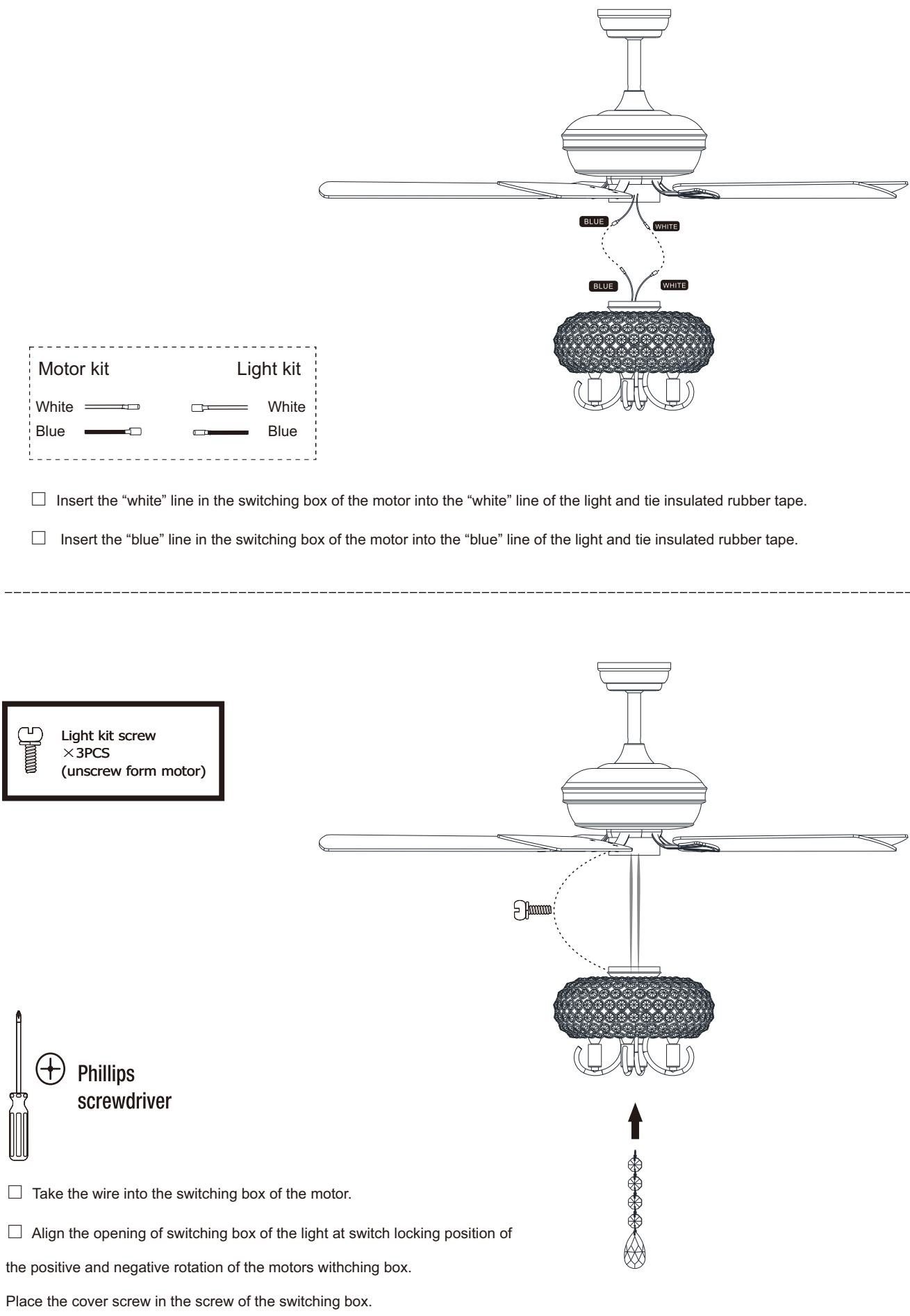


Parts Kit	
NOTE Hardware not shown to actual size.	

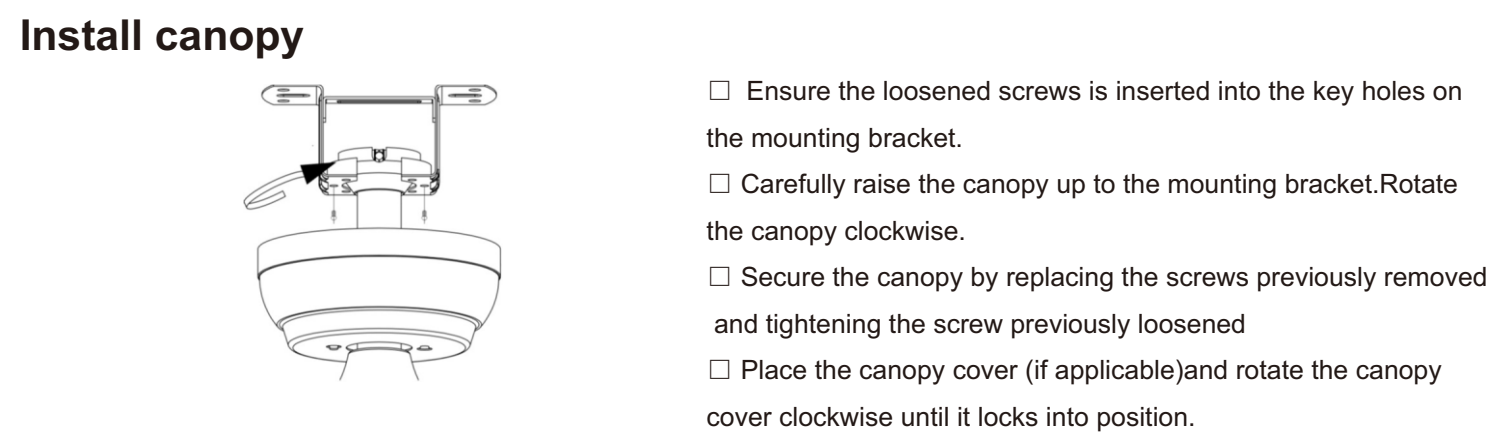
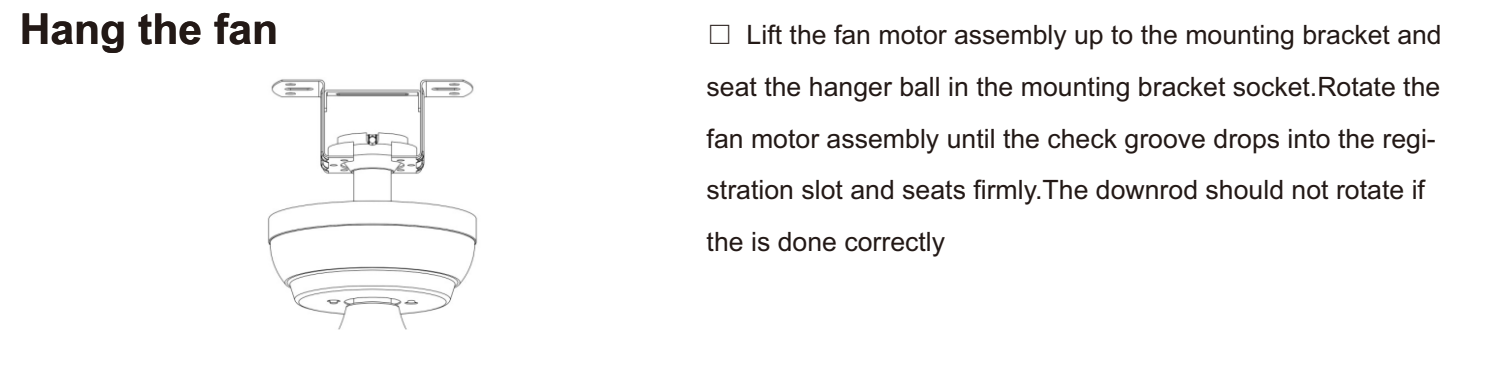
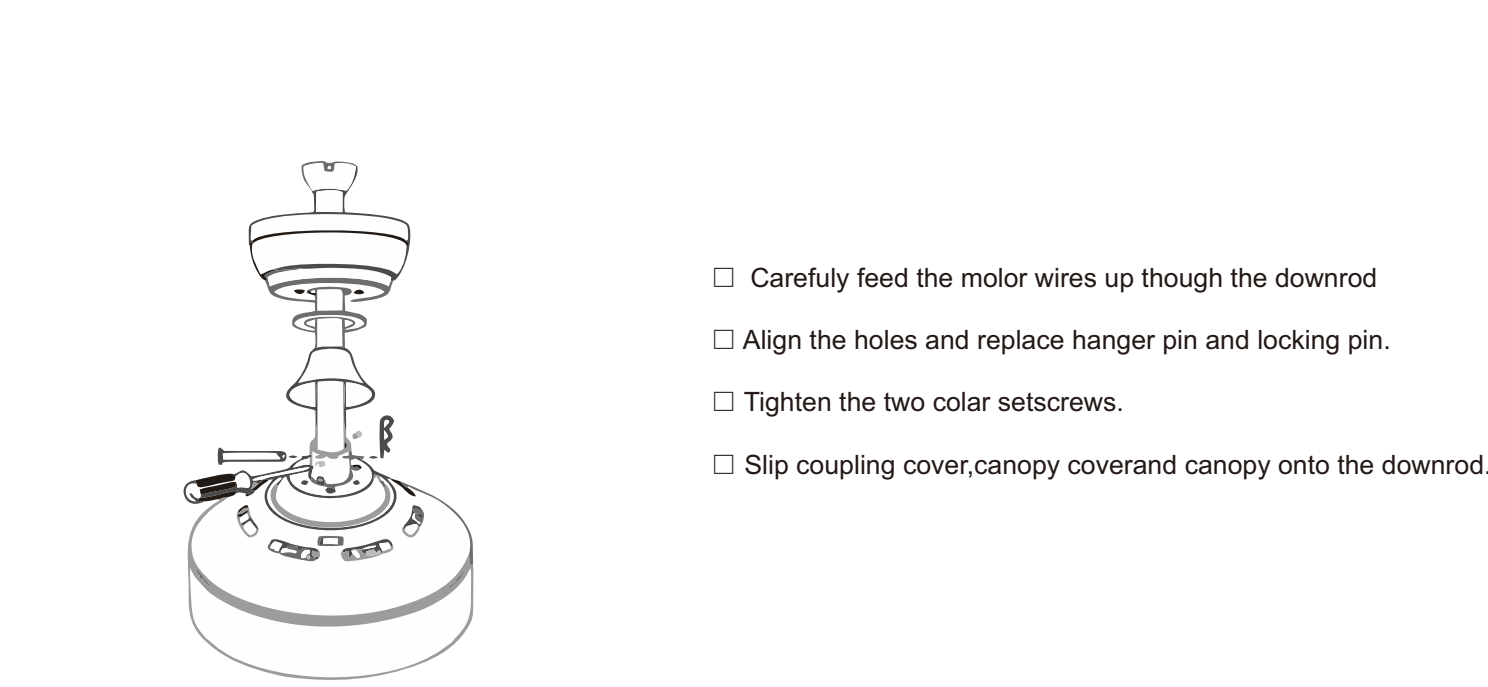
Fastening the blade arms to the motor



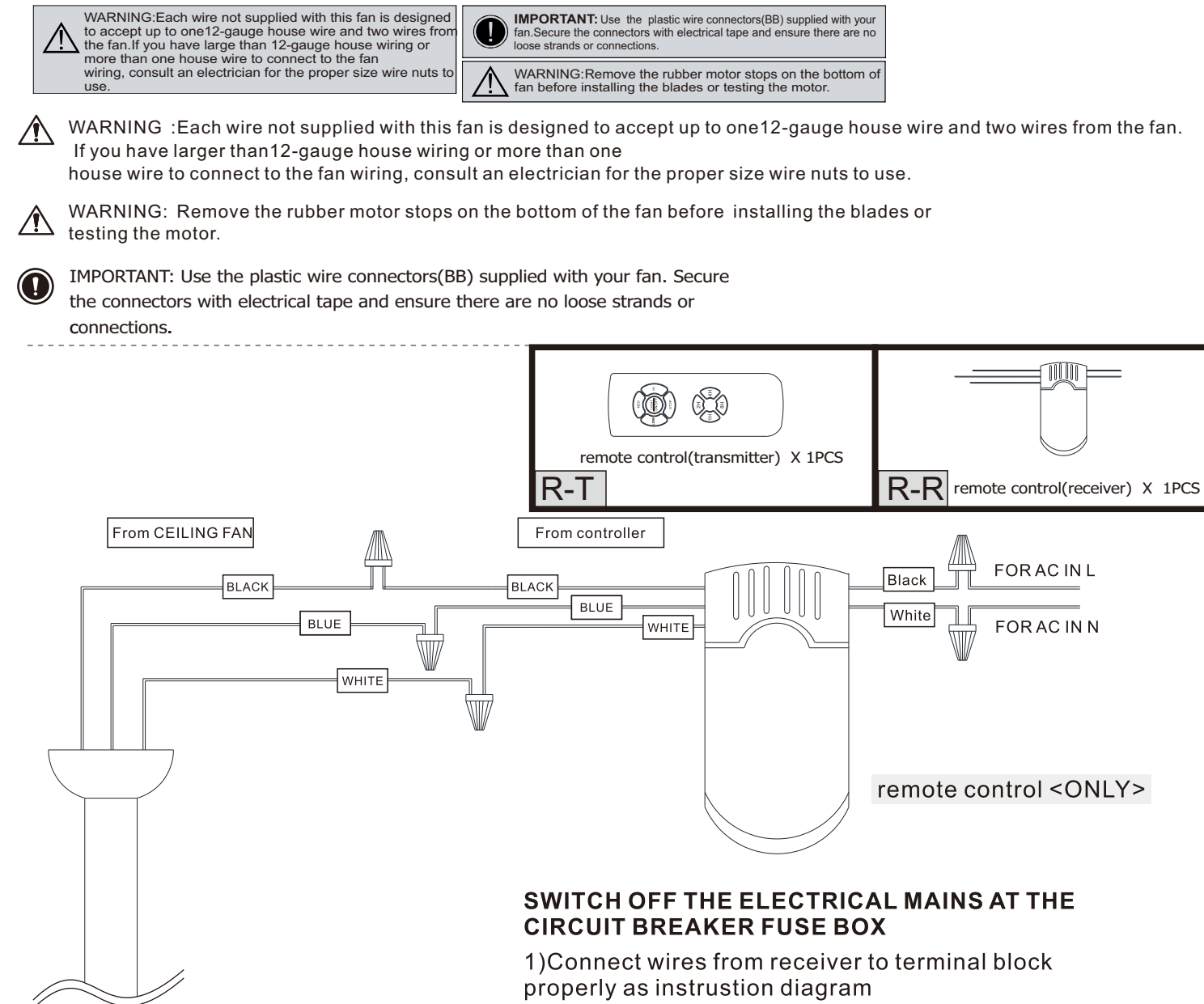
Assembly-Attaching the Lights



Install downrod assembly

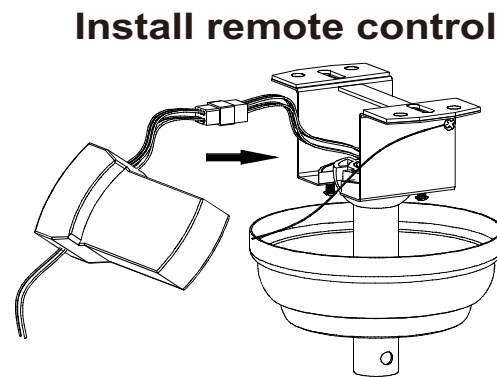


Making the electrical connections



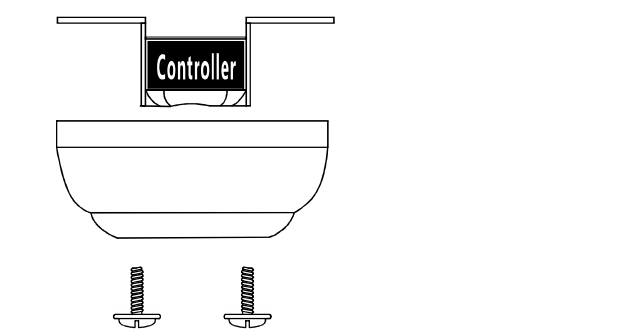
Assembly - Hanging the Fan(continued)

Preparing for mounting



1 Carefully push the canopy to the bottom of the mounting bracket, make two sliding holes aligned to the two prominent screws on the mounting bracket, and then turn clockwise until light.
2 Push the canopy ring to the bottom of the canopy, slide the inner holes aligned to the two prominent screws on the mounting bracket again, and turn the canopy ring clockwise until light.

Preparing for mounting



1 Remove the mounting bracket from the canopy by loosening the two canopy screws located in the L shaped slots.
2 Remove and save the two canopy screws in the round holes. This will enable you to remove the mounting bracket

Use of remote control

