

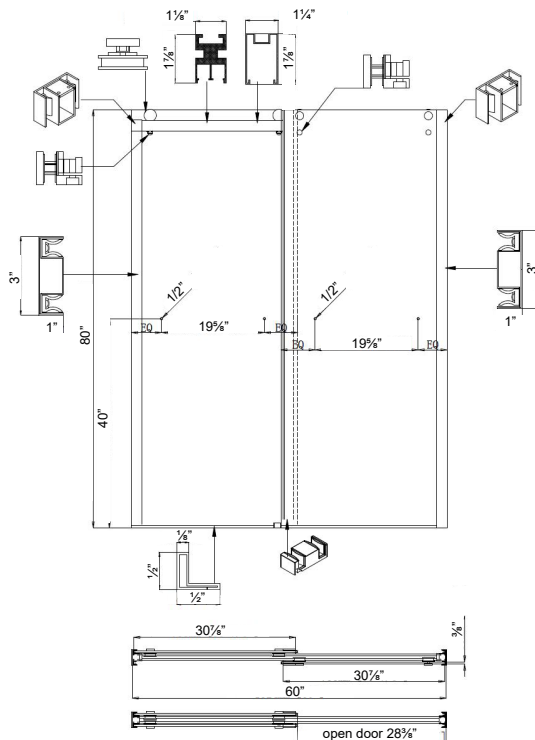
## FEATURES

- An attractive, frameless smooth sliding Bypass door that features a special Nano Protected surface treatment that keeps glass looking clean.
- New TruMotion technology features premium engineered rolling mechanism system for easy gliding and quiet sliding door.
- Unique double 304 stainless steel rollers and frame for easy gliding and quiet sliding.
- Optional side wall profiles give up to 3/8" out-of-plumb adjustment on each side.
- Walk-in opening: 26-3/8" to 28-3/8".
- Clearance height is 75-5/8".
- Can be trimmed up to 2" width adjustment.
- Tempered glass is ANSI Z97.1. certified.
- Glass thickness: 3/8" (10mm) available in Clear and Low Iron.
- Hardware finishes: Polished Chrome, Brushed Stainless, Champagne Bronze, and Matte Black.
- Shower base threshold minimum requirement is 3-3/8" wide.
- Various handle selection of your choice.
- Easy to install.
- Limited Lifetime Warranty for residential and 1 year for commercial.
- **IMPORTANT!** All measurements should be taken only AFTER walls are finished (tile, back walls, etc.); Professional installation recommended.



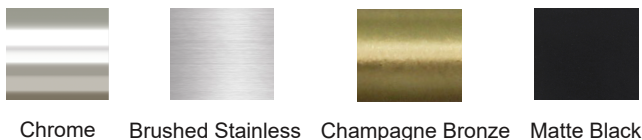
## Specify Model

	Size	Model	Glass	Width	Height	Depth	Weight
<input type="checkbox"/>	60" x 80"	SMBYPT608010C-	Clear (10mm)	60"	80"	3.07"	209
<input type="checkbox"/>	60" x 80"	SMBYPT608010C-	Low Iron (10mm)	60"	80"	3.07"	209



## To Be Specified : Hardware Color

<input type="checkbox"/>	PC Chrome
<input type="checkbox"/>	BS Brushed Stainless
<input type="checkbox"/>	CB Champagne Bronze
<input type="checkbox"/>	BM Matte Black



Chrome Brushed Stainless Champagne Bronze Matte Black

## To Be Specified : Glass

<input type="checkbox"/>	C Clear
<input type="checkbox"/>	L Low Iron



Clear

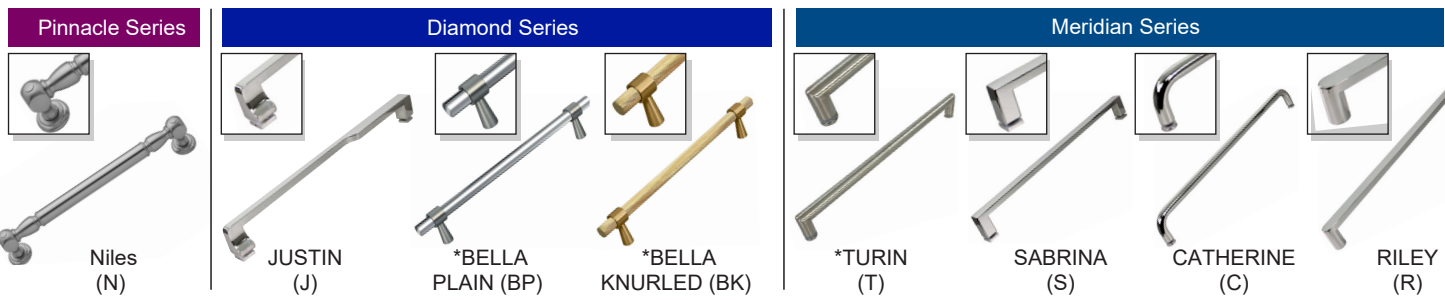
Low Iron

## FEATURES

- Handles are available in 3 distinctive series.
- Handle size is 19.69" (500mm) center hole to center hole.
- Finish: Polished Chrome (PC), Brushed Stainless (BS), Matte Black (MB) and Champagne Bronze (CB).
- Limited Lifetime Warranty for residential use and 1 year when used commercially.

## Pinnacle, Diamond & Meridian Series Shower Door Handles

Our extensive collection of high end handles add a distinctive look to your shower door and bathroom.



\* Matching grab bar available in different sizes.

### 1. Specify Model: Series & Style

Model	Style	Weight
-------	-------	--------

#### PINNACLE SERIES

<input type="checkbox"/>	PH-BPD-	Pinnacle <b>Bypass</b> Handles (Pair)	6 lbs.
<input type="checkbox"/>	PH-BND-D-	Pinnacle <b>Barn Door Double Sided</b>	6 lbs.
<input type="checkbox"/>	PH-BND-K-	Pinnacle <b>Barn Door Handle &amp; Knob</b>	4 lbs.

#### DIAMOND SERIES

<input type="checkbox"/>	DH-BPD-	Diamond <b>Bypass</b> Handles (Pair)	4 lbs.
<input type="checkbox"/>	DH-BND-D-	Diamond <b>Barn Door Double Sided</b>	3 lbs.
<input type="checkbox"/>	DH-BND-K-	Diamond <b>Barn Door Handle &amp; Knob</b>	2 lbs.

#### MERIDIAN SERIES

<input type="checkbox"/>	MH-BPD-	Meridian <b>Bypass</b> Handles (Pair)	4 lbs.
<input type="checkbox"/>	MH-BND-D-	Meridian <b>Barn Door Double Sided</b>	3 lbs.
<input type="checkbox"/>	MH-BND-K-	Meridian <b>Barn Door Handle &amp; Knob</b>	2 lbs.



### 2. To Be Specified: Handle Name

#### PINNACLE SERIES

☐ **N** Niles

#### DIAMOND SERIES

☐ **J** Justin  
☐ **BP** \*Bella Plain  
☐ **BK** \*Bella Knurled

#### MERIDIAN SERIES

☐ **T** Turin  
☐ **S** Sabrina  
☐ **C** Catherine  
☐ **R** Riley

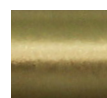
### 3. To Be Specified : Color

☐ **PC** Polished Chrome  
☐ **BS** Brushed Stainless  
☐ **CB** Champagne Bronze  
☐ **MB** Matte Black


Chrome



Brushed Stainless



Champagne Bronze



Matte Black

\* **Bella Plain** handles are only available in Chrome finish.

**Bella Knurled** handles are available in Brushed Nickel, Matte Black and Champagne Bronze.