



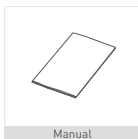
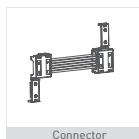
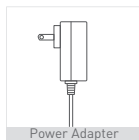
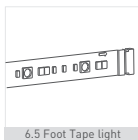
SMART TAPE LIGHT STRIP

QUICK START GUIDE

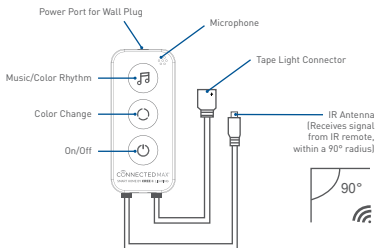


What's in the box

Please consult this checklist for all parts.



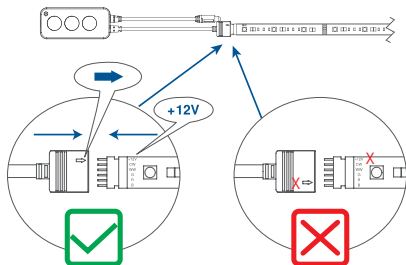
Description



Working voltage:	DC12/24V
Current:	2Ax 3CH
Max load:	12V/36W; 24V/72W
Product size:	L77 x W35 x H17mm
Working environment:	Indoor
Working temperature:	-10°C-40°C (14°F-104°F)
Humidity:	<80%RH

Power Connection

Step 1: Connect Tape Light Strip to Controller

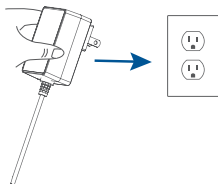


The white arrow on the Controller must align with the "+12V" text printed on the Tape Light Strip

Step 2: Connect Power Adapter to Controller



Step 3: Plug Power Adapter into wall outlet



Attach your Tape Lights



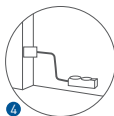
Clean the surface with a wet, damp cloth. Surface must be dry and free of dirt or oils.



Peel off the backing strip from the adhesive.



Place the Tape Light Strip where you want, and gently press down to adhere.

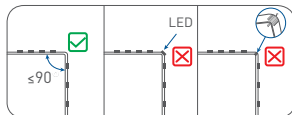


Connect the Tape Light Strip into the Controller and Wall Plug. Use the supplied Adhesive Pad to secure the controller.

5

Do NOT bend Tape Light Strip at LED or connection when going around corners.

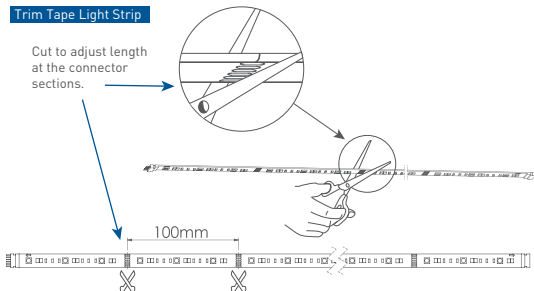
Do NOT bend at more than a 90° angle.



Trim Tape Lights / Connect Two Tape Light Strips

Trim Tape Light Strip

Cut to adjust length at the connector sections.



Connect two Tape Light Strips

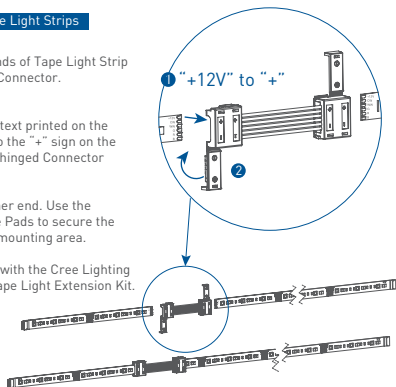
Insert trimmed ends of Tape Light Strip into the supplied Connector.

Important!

Match the "+12V" text printed on the Tape Light Strip to the "+" sign on the Connector. Close hinged Connector securely.

Repeat for the other end. Use the supplied Adhesive Pads to secure the Connector to the mounting area.

Link up to 32 feet with the Cree Lighting Connected Max Tape Light Extension Kit.



Tape Light Strip Control

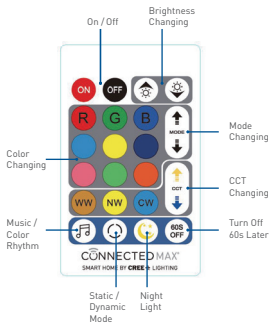
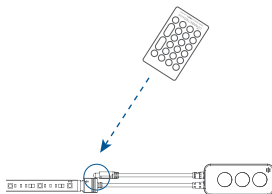
Adjust with Controller

- Click On / Off
- Static / Dynamic mode
- Music / Color Rhythm



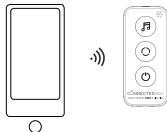
Adjust with IR Remote

Point the IR Remote at the IR Antenna to control.



Adjust with App

See page 7 to pair Smart Tape Light Strip with Cree Connected Max App



Pairing with the App

Download

The Cree Lighting App is available for both iOS and Android. Search **Cree Lighting** in the App store or Google Play to download the app.



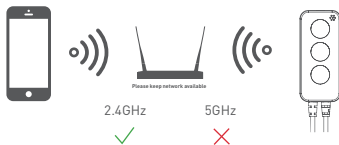
Download App (iOS)



Download App (Android)

Pairing to your network

The Connected Max Smart Tape Light Strip must pair to a 2.4GHz Wi-Fi network. Once paired, you can control on any Wi-Fi or cellular network. For most users, pairing will be quick and simple. But depending on the type of wireless router you have, you may need a little more information to get started. **Refer to our Wireless Router Guide at creelighting.com/connectedmax for more information.**



NOTE: If you need to re-select the Wi-Fi network, please press and hold the "Power" button on the Controller for 5 seconds, the device will restart, and the Tape Light Strip will slowly flash.

Pairing with the App

How to pair your Tape Light Strip

Download the Cree Lighting app and register your account. Open the Cree Lighting App, click "Sign Up", read the "User Agreement Privacy Policy" and click "Agree."



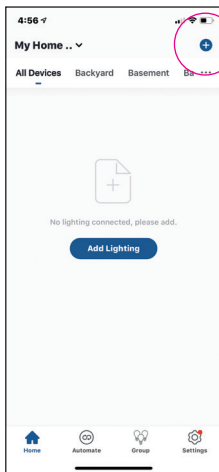
Plug the Cree Lighting Connected Max Smart Tape Light Strip you want to pair into a wall outlet and press the power button. The Tape Light Strip should start slowly flashing to indicate pairing mode. If the Tape Light Strip is not slowly flashing, it may need to be reset.

Reset a Tape Light Strip by holding down the Power button on the Controller for 5 seconds.

Pairing with the App

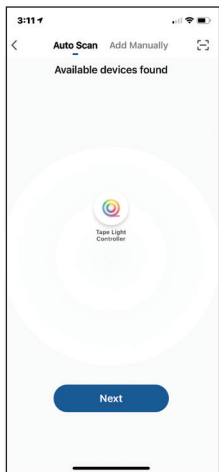
1

In the Cree lighting app, tap the "+" sign in the upper right-hand corner of the Home screen.



2

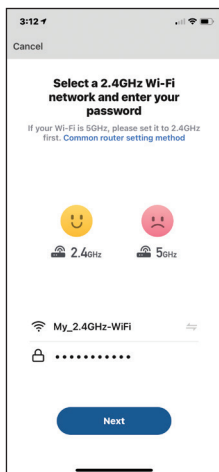
The Tape Light Strip you are pairing will appear on screen, tap "Next."



Pairing with the App

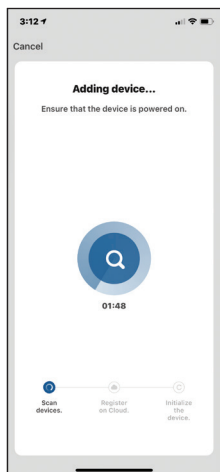
3

The Wi-Fi network your phone is connected to will appear. You can change your network to a 2.4 GHz network if needed and enter password.



4

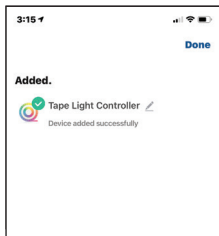
The Cree Lighting app will add your Tape Light Strip.



Pairing with the App

5

Once added, you can rename your Tape Light Strip by tapping the pencil icon next to the name – then click “Done.”



Safety Information

CERTIFIED TO UL STD153
CERTIFIED TO CSA STD C22.2#250.4
Only connect to adjacent units
Tout est connecté aux unités adjacentes

Intended adapter for strip: ASLP67W-240090
adaptateur de bandes destinées: ASLP67W-240090
SUITABLE FOR DAMP LOCATIONS
CONVIENT AUX EMPLACEMENTS HUMIDES
SUITABLE FOR OPERATION IN AMBIENT NOT EXCEEDING 40°C
PEUT ÊTRE UTILISÉ À UNE TEMPÉRATURE AMBIANTE N'EXCÉDANT PAS 40°C

Safety Information



IMPORTANT PRODUCT INFORMATION

SAFETY INFORMATION: FAILURE TO FOLLOW THESE SAFETY INSTRUCTIONS COULD RESULT IN FIRE, ELECTRIC SHOCK, OR OTHER INJURY OR DAMAGE.

This device is not intended for underwater use. To protect against electric shock, do not intentionally submerge or immerse your device, battery, or adapter in water or expose your device or adapter to other liquids. Do not spill any food or beverages on your device, battery or adapter. Do not attempt to clean or polish your device, battery, or adapter with or expose your device, battery, or adapter to oil, lotion, or other abrasive substances. Don't expose your device, battery, or adapter to salt water or other conductive liquids. Do not expose your device, battery, or adapter to pressurized water, high velocity water, or extremely humid conditions (such as a steam room). If your device, battery, or adapter gets wet, carefully unplug all cables without getting your hands wet and wait for it to dry completely before plugging it in again. Do not attempt to dry your device, battery, or adapter with an external heat source, such as a microwave oven, or hair dryer. To avoid risk of electric shock do not touch your device, battery, or adapter to any wires connected to your device during a lightning storm while your device, battery, or adapter is plugged in. If your device, battery, or adapter appears to be damaged, discontinue use immediately.

Use only accessories supplied with your device or specifically marketed for use with your device, to power your device. Use of third-party accessories may impact your device's performance. Read all safety instructions for any accessories before using with your device.

CAUTIONS & WARNINGS: Not suitable for use with standard dimmer switches. Not intended for use with emergency exit fixtures or emergency lighting. Risk of electric shock or burns. Turn power off and let cool before inspection or replacement. Do not open – no user serviceable parts inside. Use only on 120 volt AC circuits. Do not use if outer shell is cracked, broken or missing, even if lamp continues to light. Suitable for use in operating environments not exceeding +40°C (+104°F). Indoor/Outdoor – suitable for damp locations, but not for use where exposed to weather or water. Suitable for use in totally enclosed and recessed fixtures.
Not compatible with 5GHz Wi-Fi networks.
Not for use with standard dimmer switches.

Safety Information

Changes or modifications not expressly approved could void your authority to use this equipment. NOTE: This equipment has been tested and found to comply with the limits for a Class B digital device, pursuant to part 15 of the FCC Rules. These limits are designed to provide reasonable protection against harmful interference in a residential installation. This equipment generates, uses and can radiate radio frequency energy and, if not installed and used in accordance with the instructions, may cause harmful interference to radio communications. However, there is no guarantee that interference will not occur in a particular installation.

If this equipment does cause harmful interference to radio or television reception, which can be determined by turning the equipment off and on, the user is encouraged to try to correct the interference by one or more of the following measures:

- Reorient or relocate the receiving antenna.
- Increase the separation between the equipment and receiver.
- Connect the equipment into an outlet on a circuit different from that to which the receiver is connected.
- Consult the dealer or an experienced radio/TV technician for help

FCC Radiation Exposure Statement

This device complies with FCC radiation exposure limits set forth for an uncontrolled environment and it also complies with Part 15 of the FCC RF Rules. This equipment must be installed and operated in accordance with provided instructions and the antenna(s) used for this transmitter must be installed to provide a separation distance of at least 20 cm from all persons and must not be co-located or operating in conjunction with any other antenna or transmitter. End-users and installers must be provided with antenna installation instructions and consider removing the no-collocation statement.

This device complies with Part 15 of the FCC Rules. Operation is subject to the following two conditions: (1) this device may not cause harmful interference, and (2) this device must accept any interference received, including interference that may cause undesired operation.

Caution!

Any changes or modifications not expressly approved by the party responsible for compliance could void the user's authority to operate the equipment.