

Gold Bond® BRAND

09 29 00/NGC

XP® Family Of Interior Products



National 
Gypsum®

Helping You Build Better



With High-Quality Products And Resources

Founded in 1925, National Gypsum is one of the world's largest producers of quality building products. For nearly a century, customers like you have looked to us for the best products, service and technical support. With a focus on sustainability, we strive to bring you the finest in construction products, education and resources to meet and exceed your expectations.

With Technical Support You Can Count On

Great products are nothing without great customer service. For detailed technical information about product applications, installation requirements, code requirements or roof and wall assemblies, call 1-800-NATIONAL®. Talk directly to a technical expert with up-to-date knowledge of products, specifications, building codes and more. Our technical experts can even review your plans and drawings and get back to you with answers to your questions within 48 hours.





Look Closer At The Best Mold And Moisture Resistant Products

PURPLE® Family Of Products Overview 4

Hi-Abuse® XP® Gypsum Board 6

Hi-Impact® XP® Gypsum Board 7

Abuse And Impact Testing Data 8

SoundBreak® XP® Gypsum Board 9

XP® Gypsum Board 11

XP® Joint Compounds 12

Technical Data 14

With Design That Considers The Environment

Together, we can attain the highest level of ecological responsibility and resource-efficient technology. National Gypsum is committed to developing and implementing sustainable green building policies, standards and practices. Beyond offering products that can help contribute to healthier environments and have achieved GREENGUARD Certification for indoor air quality, we can help you meet the criteria for green programs and LEED credits.

PURPLE® – The Color Of Confidence

Whether you are designing a project or installing product in the field, PURPLE® products from National Gypsum offer single-source solutions that provide the performance, support and resources to get the job done right. National Gypsum's portfolio of PURPLE XP® paper-faced products deliver the confidence and peace of mind you need to stand behind your work. They are mold and moisture resistant, GREENGUARD Certified for indoor air quality and manufactured in National Gypsum's PURPLE® color. So be sure to ask for PURPLE®, and know you're building with the best.

1 Hi-Abuse® XP® Gypsum Board

- Walls subject to added abuse/abrasion
- Scratch and scuff resistant

2 Hi-Impact® XP® Gypsum Board

- Walls subject to impact from hard objects
- Resists penetrations through the gypsum board

3 SoundBreak® XP® Gypsum Board

- Rooms requiring sound control
- Reduces sound transmission through walls and ceilings

4 XP® Gypsum Board

- For use in all rooms
- Anywhere mold and moisture are a concern

5 ProForm® XP® Ready Mix with Dust-Tech®

- Reduces airborne dust
- Formulated to cause dust to fall straight to the ground
- Mold resistant

6 ProForm® Quick Set™ Lite Setting Compounds

- Allows same-day finishing
- Consistent set times
- Mold resistant





MEDICAL CENTER

3

3

4

4

3

1

1

1

5

6

Provide Extra Protection

Gold Bond® BRAND Hi-Abuse® XP® Gypsum Board

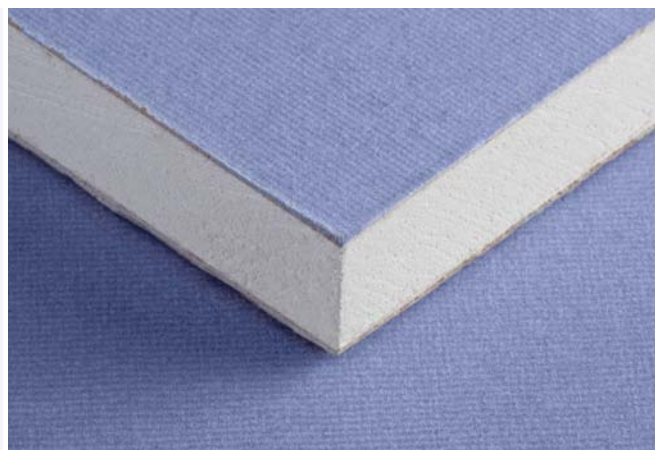
Will hard objects potentially drag along the wall surface? This abuse-resistant gypsum board is ideal to use in wall assemblies where surface abrasion is a concern, such as corridors, entryways, lobby areas and warehouses. Hi-Abuse® XP® has a mold and moisture resistant Type X gypsum core encased in heavy, abrasion and mold/mildew/moisture resistant 100% recycled PURPLE® paper on the face side and heavy, abrasion and mold/mildew/moisture resistant, 100% recycled gray paper on the back side.



1. Heavy Abrasion Mold and Moisture Resistant Face Paper
2. Enhanced Mold and Moisture Resistant Type X Core
3. Heavy Mold and Moisture Resistant Back Paper

Hi-Abuse® XP® Gypsum Board

- For walls subjected to added abuse and abrasion
- Scratch and scuff resistant



Inhibits Mold Growth

- Helps inhibit mold growth with the highest possible score on mold tests (ASTM D3273 and ASTM G21)
- Features Sporgard™ technology with extra mold-inhibiting properties
- Has less than 5% water absorption per ASTM C473



Installs Fast And Easy

- Weighs less and installs faster than a Concrete Masonry Unit (CMU)
- Reinforces joint treatment as well as standard gypsum board, reducing costs and the risk of improper installation
- Scores and snaps easily



Resists Moisture Better

- Fights the effects of moisture before damage can occur
- Helps to reinforce the structure's integrity and strength
- Reduces or eliminates swelling or dimensional movement caused by moisture



Resists Abuse

- Provides more protection against surface abrasion – stands up to scrapes, scratches and scuffs
- Has a specially formulated core that adds an extra level of durability
- Helps to prevent damage that adds maintenance costs and reduces safety

Gold Bond® BRAND Hi-Impact® XP® Gypsum Board

Is it likely that heavy objects could strike or penetrate the wall? This impact-resistant gypsum board is designed for use in areas prone to cavity penetration, such as gymnasiums, correctional facilities, schools and hospitals. Hi-Impact® XP® offers the same mold, moisture and abuse resistant features as Hi-Abuse® XP®, and in addition it has fiberglass mesh embedded into the core, providing even more impact/penetration resistance. It also has a specially formulated core to provide fire-resistance ratings. And you can use Hi-Impact XP as a tile backerboard in dry areas or areas with limited water exposure, such as toilet/sink areas and areas above tile in tubs and showers.



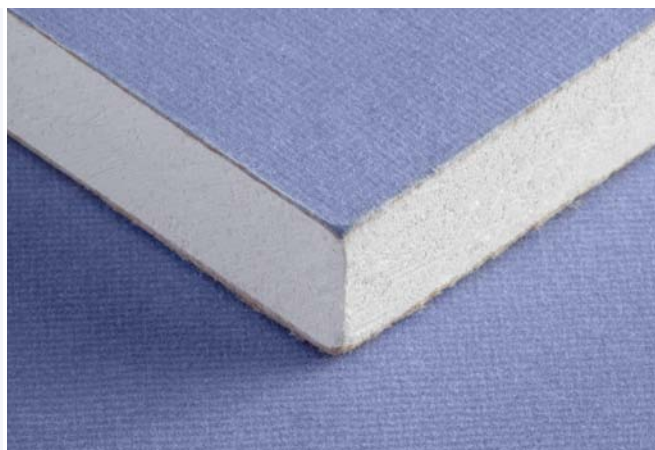
1. Heavy Abrasion Mold and Moisture Resistant Face Paper
2. Enhanced Mold and Moisture Resistant Type X Core
3. Fiberglass Mesh Reinforcement
4. Heavy Mold and Moisture Resistant Back Paper

Hi-Impact® XP® Gypsum Board

- For walls subjected to impact from hard objects
- Resists penetrations through the walls



Photos © 2015 Scripps Networks, LLC.
Used with permission; all rights reserved.



Inhibits Mold Growth

- Helps inhibit mold growth with the highest possible score on mold tests (ASTM D3273 and ASTM G21)
- Features Sporgard™ technology with extra mold-inhibiting properties
- Has less than 5% water absorption per ASTM C473



Installs Fast And Easy

- Weighs less and installs faster than a Concrete Masonry Unit (CMU)
- Reinforces joint treatment as well as standard gypsum board, reducing costs and the risk of improper installation
- Scores and snaps easily



Resists Moisture Better

- Fights the effects of moisture before damage can occur
- Helps to reinforce the structure's integrity and strength
- Reduces or eliminates swelling or dimensional movement caused by moisture



Resists Impact

- Offers greater protection against impact that can lead to indentation
- Features fiberglass mesh embedded into its core, one of the toughest components
- Provides the highest level of durability for your walls or ceilings
- Helps to prevent damage that adds maintenance costs and reduces safety

For details about fire resistance, see technical data on page 14.

How Much Abuse And Impact Can XP® Gypsum Board Take?

Do you need a gypsum board that can protect those high-traffic areas where interior damage is likely to occur? Gold Bond® BRAND Hi-Abuse® XP® Gypsum Board, Gold Bond® BRAND Hi-Impact® XP® Gypsum Board, and Gold Bond® BRAND SoundBreak® XP® Gypsum Board are excellent choices and are tested in accordance with ASTM C1629, but there are differences between them.

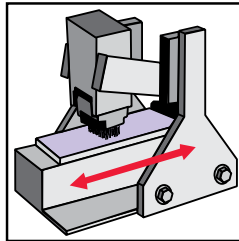
ABUSE AND IMPACT RESULTS

Product	ASTM D4977 Surface Abrasion Classification Level	ASTM D5420 Surface Indentation Classification Level	ASTM E695 Soft-Body Impact Classification Level	Annex A1 Hard-Body Impact Classification Level
Gold Bond® BRAND Hi-Abuse® XP® Gypsum Board	3	1	2	1
Gold Bond® BRAND Hi-Impact® XP® Gypsum Board	3	1	3	3
Gold Bond® BRAND SoundBreak® XP® Gypsum Board	3	1	2	1

Surface Abrasion

(Modified ASTM D4977)

This test measures the ability of a gypsum panel surface to resist scratches and scuffs by subjecting the panel to 50 back and forth cycles with a wire brush. The depth of the abrasion is measured. The test was originally developed to test granule adhesion to mineral surfaced roofing, and was modified by adding 25 pounds of additional weight to the wire brush.



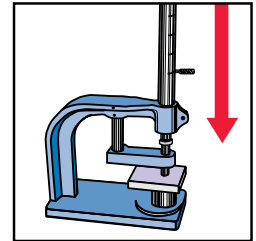
Surface Abrasion Resistance Performance Requirements: ASTM D977

CLASSIFICATION LEVEL	ABRADED DEPTH MAXIMUM
1	0.126" (3.2 mm)
2	0.059" (1.5 mm)
3	0.010" (0.3 mm)

Surface Indentation

(ASTM D5420 – Gardner Impact Test)

This test measures the ability of a gypsum panel to resist dents by a small hard object, by raising and dropping a hemispherical rod onto the gypsum panel. The depth of the indentation is measured. The original test was developed to test flat, rigid sheets of plastic.



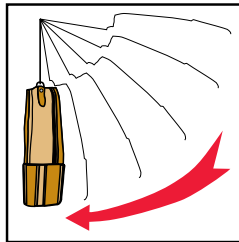
Indentation Resistance Performance Requirements: ASTM D5420

CLASSIFICATION LEVEL	INDENTATION MAXIMUM
1	0.150" (3.8 mm)
2	0.100" (2.5 mm)
3	0.050" (1.3 mm)

Single Drop Soft-Body Impact

(Modified ASTM E695)

This test measures the ability of a gypsum panel to withstand a single impact of a heavy soft object. This test is conducted by swinging a leather bag loaded with steel pellets into the panel. When the panel breaks, the height of the drop and weight of the bag are used to calculate the foot-pound measurement required to break the panel. The test was originally developed to measure relative resistance of wall, floor, and roof construction to impact loading.



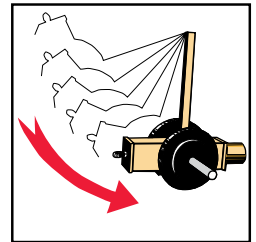
Soft-Body Impact Test Performance Requirements: ASTM E695

CLASSIFICATION LEVEL	SOFT BODY MINIMUM
1	90 ft.-lbs. (112 J)
2	195 ft.-lbs. (265 J)
3	300 ft.-lbs. (408 J)

Hard-Body Impact

(Annex A1)

This test measures the ability of a gypsum panel to withstand the impact of a hard object such as a hammer or heel of a boot. A panel is impacted with 2-3/4" steel cylinder mounted to a ram. Weights are added to the ram and the panel is impacted one time. The maximum amount of impact force the panel can withstand without breaching the stud cavity is reported. This is a new test proposed by manufacturers of high performance panels.



Hard-Body Impact Test Performance Requirements: Annex A1

CLASSIFICATION LEVEL	HARD BODY MINIMUM
1	50 ft.-lbs. (68 J)
2	100 ft.-lbs. (136 J)
3	150 ft.-lbs. (204 J)

Gold Bond® BRAND SoundBreak® XP® Gypsum Board

Turn down the volume when you incorporate Gold Bond® BRAND SoundBreak® XP® Gypsum Board into your wall assemblies. You will dramatically reduce sound transmission between rooms or dwelling units with this superior sound-damping gypsum board. SoundBreak XP has an acoustically enhanced, high-density gypsum core encased in heavy, abrasion and mold/mildew/moisture resistant, 100% recycled PURPLE® paper on both sides. Plus, SoundBreak XP provides the same great mold-inhibiting qualities as XP Gypsum Board.



1. Heavy Abrasion Mold and Moisture Resistant Face Paper
2. Enhanced High-Density Mold-Resistant Core
3. Viscoelastic Polymer
4. Heavy Mold and Moisture Resistant Back Paper

SoundBreak® XP® Gypsum Board

- For rooms requiring sound control
- Reduces sound transmission through walls and ceilings



Photos © 2015 Scripps Networks, LLC.
Used with permission; all rights reserved.



Reduces Sound Transmission

- Has a layer of viscoelastic damping polymer sandwiched between two pieces of high-density, mold-resistant gypsum board
- Provides high-rated Sound Class Transmission (STC) values per an independent third-party acoustical laboratory using ASTM E90 test procedures



Works For Interior Projects

- Use in a single layer or as a component of multi-layer wall assemblies
- Thinner than traditionally built high-STC wall partitions, increasing usable floor space
- Available in 1/2" and 5/8" (5/8" features a fire-resistant Type X core and is UL Classified)
- Provides greater resistance to surface abuse and indentation than standard gypsum board (per ASTM C1629)



Installs Fast And Easy

- Installs like traditional gypsum board, without requiring additional clips and/or channels
- Finishes and decorates as easily as standard gypsum board
- Can cut by scoring deeply from both sides before snapping or by using a hand/power saw



Inhibits Mold Growth

- Helps inhibit mold growth with the highest possible score on mold tests (ASTM D3273 and ASTM G21)
- Features Sporgard™ technology with extra mold-inhibiting properties
- Has less than 5% water absorption per ASTM C473



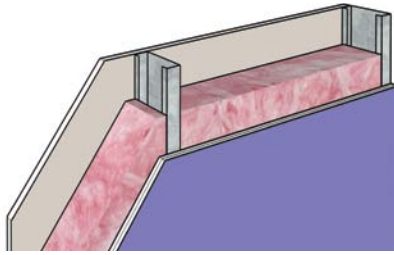
Resists Moisture Better

- Fights the effects of moisture before damage can occur
- Helps to reinforce the structure's integrity and strength
- Reduces or eliminates swelling or dimensional movement caused by moisture

For details about fire resistance, see technical data on page 14.

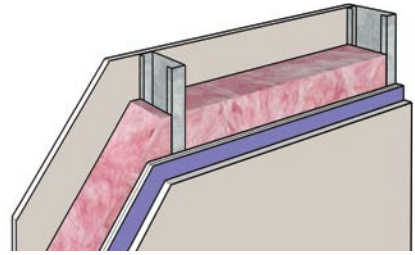
SoundBreak® XP® Acoustical Drawings

1-hour Fire Rating
V438, U465 UL Design
STC-55
OL14-0404



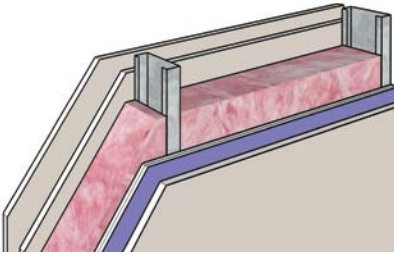
Framing: 3-5/8 in. steel studs, 20 gauge, 24 in. o.c.
Insulation: 3-1/2 in. glass fiber
Side 1: 5/8 in. Fire-Shield Gypsum Board
Side 2: 5/8 in. SoundBreak XP Gypsum Board

1-hour Fire Rating
V438, U465 UL Design
STC-57
RAL-TL06-334



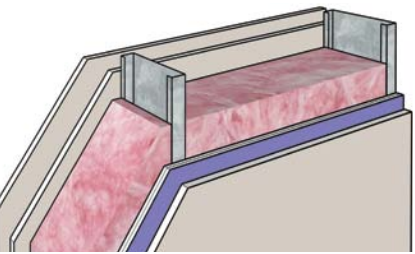
Framing: 3-5/8 in. steel studs, 25 gauge, 24 in. o.c.
Insulation: 3-1/2 in. glass fiber
Side 1: 5/8 in. Fire-Shield Gypsum Board
Side 2: 5/8 in. Fire-Shield Gypsum Board on 1/2 in. SoundBreak XP Gypsum Board

2-hour Fire Rating
V438, U411 UL Design
STC-60
RAL-TL07-168



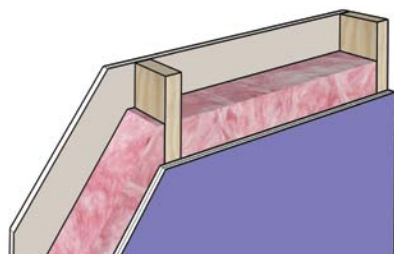
Framing: 3-5/8 in. steel studs, 25 gauge, 24 in. o.c.
Insulation: 3-1/2 in. glass fiber
Side 1: 2 layers 5/8 in. Fire-Shield Gypsum Board
Side 2: 5/8 in. Fire-Shield Gypsum Board on 5/8 in. SoundBreak XP Gypsum Board

2-hour Fire Rating
V438, U411 UL Design
STC-61
NRCC B-3456.2



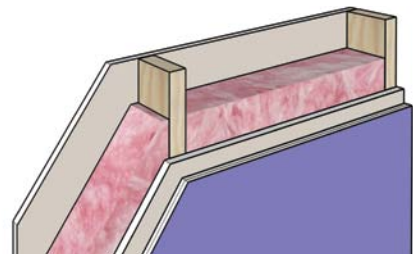
Framing: 6 in. steel studs, 25 gauge, 24 in. o.c.
Insulation: 6 in. glass fiber
Side 1: 2 layers 5/8 in. Fire-Shield Gypsum Board
Side 2: 5/8 in. Fire-Shield Gypsum Board on 5/8 in. SoundBreak XP Gypsum Board

Not Rated
STC-49
NGC 2009027



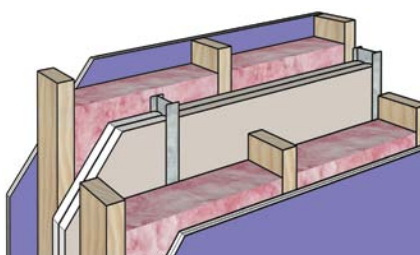
Framing: 2x4 wood studs, 24 in. o.c.
Insulation: 3-1/2 in. glass fiber
Side 1: 1/2 in. gypsum board
Side 2: 1/2 in. SoundBreak XP Gypsum Board

Not Rated
STC-51
NGC 2009028



Framing: 2x4 wood studs, 24 in. o.c.
Insulation: 3-1/2 in. glass fiber
Side 1: 1/2 in. gypsum board
Side 2: 1/2 in. SoundBreak XP Gypsum Board on 1/2 in. Gypsum Board

2-hour Fire Rating
U347 UL Design
STC-67
NRCC B-3451.1



Fire Wall: 2 in. H-studs, 24 in. o.c. with 2 layers 1 in. Fire-Shield Shaftliner between studs, 3/4 in. air space
Framing: 2x4 wood studs, 16 in. o.c. each side
Insulation: 3-1/2 in. glass fiber each side
Side 1: 5/8 in. SoundBreak XP Gypsum Board
Side 2: 5/8 in. SoundBreak XP Gypsum Board

Gold Bond® BRAND XP® Gypsum Board

When you want more peace of mind, specify Gold Bond® BRAND XP® Gypsum Board. XP Gypsum Board offers the same advantages as a traditional moisture-resistant board with added mold resistance in the core and paper. With PURPLE® paper on the face side and heavy, mold/mildew/moisture, 100% recycled gray paper on the back side, you can count on XP Gypsum Board to help protect your projects from mold.



1. Mold and Moisture Resistant Face Paper
2. Enhanced Mold and Moisture Resistant Type X Core
3. Heavy Mold and Moisture Resistant Back Paper

XP® Gypsum Board

- For use in all rooms
- Anywhere mold and moisture is a concern.



Photos © 2015 Scripps Networks, LLC.
Used with permission; all rights reserved.



Works For Interior Projects

- All wall and ceiling applications
- As tile backerboard in dry areas
- In areas with limited water exposure, such as toilet/sink areas and above tile in tubs and showers



Inhibits Mold Growth

- Helps inhibit mold growth with the highest possible score on mold tests (ASTM D3273 and ASTM G21)
- Features Sporgard™ technology with extra mold-inhibiting properties
- Has less than 5% water absorption per ASTM C473



Installs Fast And Easy

- Scores and snaps easily, with no special handling requirements
- Ends are square cut and finished smooth
- Edges are tapered, allowing joints to be reinforced
- Reinforces the core with face paper folded around the long edges



Provides Fire Resistance

- UL Classified for fire resistance, surface burning characteristics and noncombustibility



Resists Moisture Better

- Fights the effects of moisture before damage can occur
- Helps to reinforce the structure's integrity and strength
- Reduces or eliminates swelling or dimensional movement caused by moisture

For details about fire resistance, see technical data on page 14.

ProForm® BRAND XP® Joint Compounds

Finish Strong

ProForm® BRAND XP® All Purpose Joint Compound And XP® Lite Joint Compound

For optimum resistance to mold and mildew, we recommend using ProForm® BRAND XP® Joint Compounds with all XP® Gypsum Board products. Our family of XP Joint Compounds include: XP® All Purpose Joint Compound, XP® Lite Joint Compound and Quick Set™ Lite Setting Compound. ProForm offers high-quality, consistent formulas that are easy to apply, saving you time and effort. They all have excellent adhesion and bonding capabilities and work for all phases of joint finishing, including taping, filling, topping, patching, skimming and texturing as well as fastener spotting. Use them also to texture walls and ceilings, repair cracks in plaster walls, and to laminate gypsum board to other surfaces.



ProForm® XP® All Purpose® with Dust-Tech®



ProForm XP with Dust-Tech ready mix joint compound has achieved GREENGUARD GOLD Certification, which requires stricter certification criteria. Visit dust-tech.info for details.

Features

- Reduces airborne dust by 60% – quick and easy clean-up
- Resists mold growth – per ASTM G21 score of 0 (best) and ASTM D3273 score of 10 (best)
- Applies easily and provides excellent bond
- Lessens pocking and pinholing
- Great for first phases of finishing

Applications

- Taping
- Finishes joints and cornerbead
- Spots fasteners
- Skims and textures
- Repairs cracks in plaster walls

Package Details

Pail: 61.7 lbs (28 kg)

Carton: 50 lbs (22.7 kg)

Approximate Coverage

123-140 lbs/9 gal per 1,000 sq ft

ProForm® XP® Lite with Dust-Tech®



ProForm XP® with Dust-Tech ready mix joint compound has achieved GREENGUARD GOLD Certification, which requires stricter certification criteria. Visit dust-tech.info for details.

Features

- Weighs up to 30% less than XP All Purpose
- Reduces airborne dust by 60% – quick and easy clean-up
- Reduces shrinkage by up to 33%
- Resists mold growth – per ASTM G21 score of 0 (best) and ASTM D3273 score of 10 (best)
- Provides superior finish
- Sands without clogging sanding tool

Applications

- Finishes joints and cornerbead
- Spots fasteners
- Skims and textures
- Repairs cracks in plaster walls

Package Details

Pail: 4.5 gal (28 kg)

Carton: 3.5 gal (22.7 kg)

Approximate Coverage

123-140 lbs/9 gal per 1,000 sq ft

ProForm® BRAND Quick Set™ Setting Joint Compound

Easy to mix and apply, ProForm® Quick Set™ setting compound sets fast, allowing for same-day finishing and next-day decorating. Once the compound has set, even humidity will not slow down your tight schedule. When minutes count, you can set your clock by our consistent setting and working times. For product availability, call your local sales representative.



ProForm® Quick Set™ Lite Compound



Features

- Streamlines scheduling – recoat immediately once previous coat sets
- Provides excellent bond
- Stays strong/highly durable surface
- Shrinks less and dries white
- Allows easy mixing and sanding
- Added protection against mold
- 30% lighter than Quick Set joint compound

Applications

- Works well for heavy fills, beads, trims, joint finishing and laminating gypsum panels

Package Details

Bag: 18 lbs (8.2 kg)

Approximate Coverage

45-55 lbs/1,000 sq ft
(22-27 kg/100 sq m)

Mixing

Mix 11-12 pts (5.2-5.7 L) clean, room temperature, drinkable water per bag.

QUICK SET™ LITE WORKING and SETTING TIME COMPARISON

Stamped Product Time	Working Time Minutes	Set Time Minutes
5	3 – 5	10 – 20
20	15 – 20	20 – 40
45	35 – 45	45 – 70
90	70 – 90	90 – 125
210	180 – 210	210 – 280

Choose The Best Products For Your Project

	Embed Tape	Fill Or Trim Cornerbeads	Finish Joints	Spot Nails And Screws	Texture	Skim Coat	Sanding	In Mechanical Taping Tools
ProForm® XP® with Dust-Tech®	✓	✓	✓	✓	✓	✓	✓	✓
ProForm® XP® Lite with Dust-Tech®	✓	✓	✓	✓	✓	✓	✓	✓
ProForm® Quick Set™ Lite	✓	✓	✓	✓	—	—	✓	—

✓ Best ✓ Better ✓ Good — Not Recommended

Fire-Resistance Ratings

Fire-resistance ratings represent the results of tests on assemblies made up of specific materials in a specific configuration. When selecting construction designs to meet certain fire-resistance requirements, use caution to ensure that each component of the assembly is specified in the test. Further precautions should be taken to ensure that assembly procedures are in accordance with those of the tested assembly. For fire safety information, see **nationalgypsum.com**. For copies of specific tests, call 1-800-NATIONAL®.

Two products that provide additional fire-resistance ratings when used in specific fire-rated assemblies:

Gold Bond® BRAND XP® Fire-Shield® Gypsum Board

– with a Type X core

Gold Bond® BRAND XP® Fire-Shield® C Gypsum Board

– with a specially formulated Type X core (where weight and number of gypsum board layers are a concern)

UL Listed Assemblies

The 5/8" SoundBreak® XP® Gypsum Board is tested in accordance with ASTM Standard E119 and is classified as Type X for use in the following UL listings:

U017, U301, U302, U305, U309, U326, U330, U332, U338, U339, U341, U342, U351, U354, U355, U356, U357, U358, U360, U364, U368, U369, U371, U379, U392, U405, U411, U418, U420, U425, U428, U429, U434, U439, U449, U450, U460, U465, U466, U475, U487, U494, U499, U505, U524, U525, U531, U646, U647, U648, U649, U651, U652, U926, V408, V415, V419, V420, V421, V425, V430, V432, V433, V434, V435, V438, V449, V450, V486, V483, V484, V488

UL Core Designation

5/8" SoundBreak® XP® Gypsum Board: SoundBreak XP

PHYSICAL PROPERTIES

	1/2" XP	5/8" XP	1/2" SoundBreak XP	5/8" SoundBreak XP	Hi-Abuse XP	Hi-Impact XP
Thickness, nominal	1/2" (12.7 mm)	5/8" (15.9 mm)	1/2" Regular (12.7 mm)	5/8" Type X (15.9 mm)	5/8" Type X (15.9 mm)	5/8" Type X (15.9 mm)
Width, nominal	4' (1219 mm)	4' (1219 mm)	4' (1219 mm)	4' (1219 mm)	4' (1219 mm)	4' (1219 mm)
Length, standard	8' – 12' (2438 – 3657 mm)	8' – 12' (2438 – 3657 mm)	8' – 12' (2438 – 3657 mm)	8' – 12' (2438 – 3657 mm)	8' – 12' (2438 – 3657 mm)	8' – 12' (2438 – 3657 mm)
Weight, lbs/sq ft, nominal	1.5 – 1.6	2.2	2.3	2.7	2.8	2.8
Edges	Tapered	Tapered	Tapered	Tapered	Tapered	Tapered
Surface Burning Characteristics (per ASTM E 84)	Flame spread: 15 Smoke developed: 0	Flame spread: 15 Smoke developed: 0	Flame spread: 15 Smoke developed: 0	Flame spread: 15 Smoke developed: 0	Flame spread: 15 Smoke developed: 0	Flame spread: 15 Smoke developed: 0
Packaging*	34 pcs/unit	26 pcs/unit	34 pcs/unit	26 pcs/unit	26 pcs/unit	26 pcs/unit

*Special lengths may be available. Contact your local sales representative for more information.

APPLICABLE STANDARDS AND REFERENCES

	XP	SoundBreak XP	Hi-Abuse/Hi-Impact XP	XP Joint Compounds
ASTM C1396	●	●	●	
ASTM C1629	●	●	●	
ASTM C473	●	●	●	
ASTM C475				●
ASTM C840	●	●	●	●
ASTM D3273	●	●	●	●
ASTM G21	●	●	●	●
Gypsum Association GA-216	●	●	●	●
Gypsum Association GA-214	●	●	●	●
National Gypsum Company, <i>NGC Construction Guide</i>	●	●	●	●
National Gypsum Company, <i>Interior Finishing Products Construction Guide</i>				●

MAXIMUM FRAMING SPACING – For Single Layer XP Gypsum Board

	Gypsum Board Thickness	Gypsum Board Orientation to Framing	Maximum Framing Spacing
Ceilings:	1/2" (12.7 mm)	Parallel	16" (406 mm) o.c.
	1/2" (12.7 mm)	Perpendicular	24" (610 mm) o.c.
	5/8" (15.9 mm)	Parallel	16" (406 mm) o.c.
	5/8" (15.9 mm)	Perpendicular	24" (610 mm) o.c.
Walls:	1/2" (12.7 mm)	Perpendicular or Parallel	24" (610 mm) o.c.
	5/8" (15.9 mm)	Perpendicular or Parallel	24" (610 mm) o.c.

NOTE: On ceilings to receive hand or spray applied, water-based texture material, XP® Gypsum Board products shall be applied perpendicular to framing.

Notes

[illegible]

LIMITED WARRANTY AND REMEDIES

Products manufactured and sold by National Gypsum Company are warranted by National Gypsum Company to its customers to be free from defects in materials and workmanship at the time of shipment. THIS EXPRESS WARRANTY IS THE ONLY WARRANTY APPLICABLE TO SUCH PRODUCTS, AND IS IN LIEU OF AND EXCLUDES ALL OTHER EXPRESS ORAL OR WRITTEN WARRANTIES AND ALL IMPLIED WARRANTIES, INCLUDING BUT NOT LIMITED TO THE IMPLIED WARRANTIES OF MERCHANTABILITY AND FITNESS FOR A PARTICULAR PURPOSE.

National Gypsum Company will not be liable for any incidental, indirect or consequential losses, damages or expenses. The customer's exclusive remedy for any type of claim or action for defective products will be limited to the replacement of the products (in the form originally shipped) or, at National Gypsum's option, to a payment or credit not greater than the original purchase price of the products.

Mold And Mildew Resistance

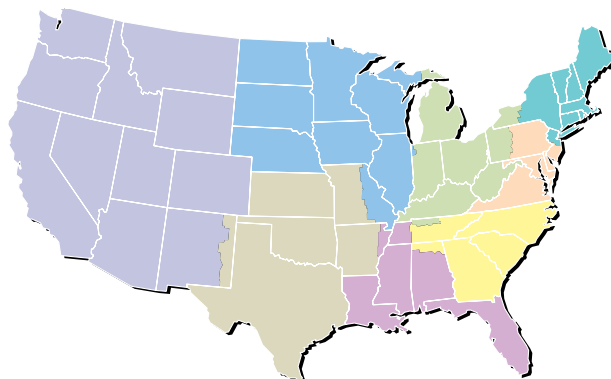
Gold Bond® BRAND XP® Gypsum Board products with Sporgard™ were designed to provide extra protection against mold and mildew compared to standard wallboard products. When tested by an independent laboratory, XP Gypsum Board products with Sporgard received the highest possible ratings on ASTM G21 and D3273.

National Gypsum Company will not be liable for products claimed to be defective where the defect resulted from causes not within National Gypsum's control, or which arose or occurred after shipment, including but not limited to accidents, misuse, mis-handling, improper installation, contamination or adulteration by other materials or goods, or abnormal conditions of temperature, moisture, dirt or corrosive matter.

Any claim that products sold by National Gypsum Company were defective or otherwise did not conform to the contract of sale is waived unless the customer submits it in writing to National Gypsum within thirty (30) days from the date the customer discovered or should have discovered the defect or non-conformance. No legal action or proceeding complaining of goods sold by National Gypsum may be brought by the customer more than one year after the date the customer discovered or should have discovered the defect or problem of which it complains.

No material can be considered "mold proof," nor is it certain that any material will resist mold or mildew indefinitely. When used in conjunction with good design, handling and construction practices, XP Gypsum Board products can provide increased mold resistance versus standard wallboard products. As with any building material, avoiding water exposure during handling, storage and installation, and after installation is complete, is the best way to avoid the formation of mold or mildew.

CUSTOMER SERVICE SALES AREAS



Atlantic Area

Phone: (800) 237-9167
Fax: (877) 252-0430

Central Area

Phone: (800) 252-1065
Fax: (866) 232-0440

Gulf Area

Phone: (800) 343-4893
Fax: (866) 482-8940

Midwest Area

Phone: (800) 323-1447
Fax: (866) 692-8590

Northeast Area

Phone: (800) 253-3161
Fax: (866) 632-1480

Southeast Area

Phone: (800) 548-9394
Fax: (866) 732-1990

Southwest Area

Phone: (800) 548-9396
Fax: (866) 792-7520

Western Area

Phone: (800) 824-4227
Fax: (800) 438-6266

National Accounts

Phone: (800) 440-1230
Fax: (866) 622-3590

Manufactured Housing

Phone: (800) 455-3185
Fax: (800) 639-1714



PRODUCT
CERTIFIED FOR
LOW CHEMICAL
EMISSIONS:
UL.COM/GG
UL 2818

PURPLE
EVOLVE YOUR WALLS™

purpleproducts.info

Corporate Headquarters

National Gypsum Company
2001 Rexford Road
Charlotte, NC 28211
Phone: (704) 365-7300
Web: nationalgypsum.com
askforpurple.com

Technical Information

Phone: (800) NATIONAL
(800) 628-4662
Fax: (800) FAX-NGC1
(800) 329-6421

