

❖ 24540 - Console Lavatory Kit

- Chrome (002) frame finish

❖ 24545 - Console Lavatory Kit

- Brushed Nickel (295) frame finish

❖ 24548 - Console Lavatory Kit

- Polished Nickel (008) frame finish

- Functional side towel bars supported to wall
- Adjustable period styled levelings
- Recessed rear overflow

Nominal Dimensions:

28" x 22" (711mm x 565mm)

35-1/4" (895mm) rim height

Bowl Inside Dimensions:

20-1/8" (513mm) wide

12-3/8" (314mm) front-to-back

6-3/8" (162mm) deep



Kit Components:

❖ 20010 28" Lutezia Lavatory with 8" centers

Lavatory Colors:



White
001



Biscuit
071

❖ 21410 Console unit only

Console Unit Colors:



Chrome
002

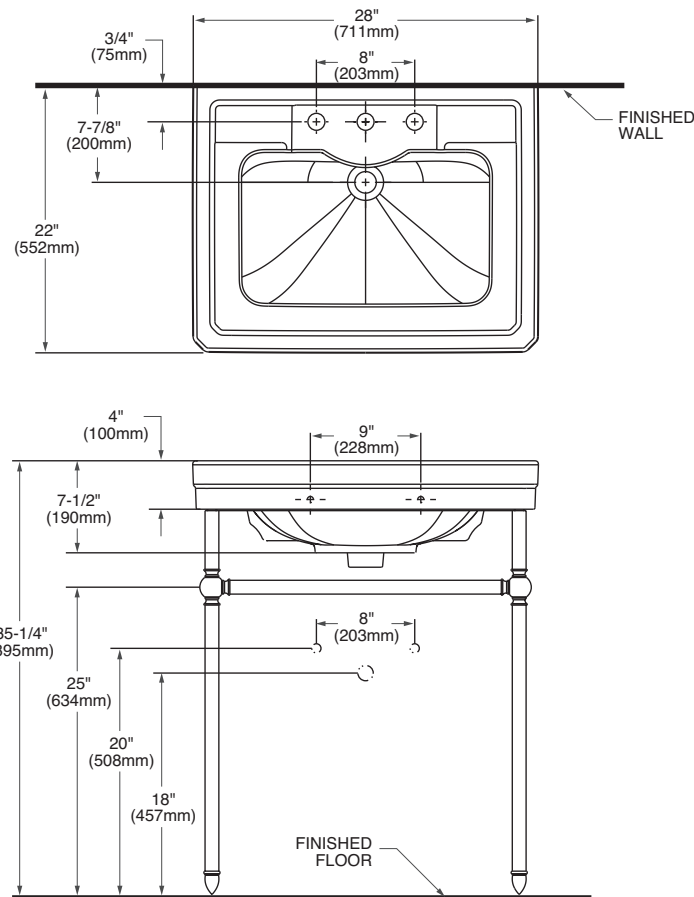


Brushed Nickel
295



Polished Nickel
008

ROUGH IN DIAGRAM SHOWN
ON REVERSE SIDE



NOTES:

LOCATE SUPPLIES AND "P" TRAP IN OPEN AREA.
SECURE FURNITURE IN ACCORDANCE WITH INSTALLATION INSTRUCTIONS PROVIDED.
FITTINGS NOT INCLUDED AND MUST BE ORDERED SEPARATELY.
INSTALLATION INSTRUCTIONS SUPPLIED WITH LAVATORY AND CONSOLE LEGS.

IMPORTANT: Dimensions of fixtures are nominal and may vary within the range of tolerances established by applicable ASME standards. These measurements are subject to change or cancellation. No responsibility is assumed for use of superseded or voided pages.

To Be Specified:

- ☐ Color:
- ☐ Faucet:
- ☐ Faucet Finish:
- ☐ Supplies:
- ☐ 1-1/4" Trap:

Compliance Certifications:

- Meets or Exceeds ASME A112.19.2 - 2008/CSA B45.1-08