

COLORADO ELONGATED 10"-12" ROUGH

- Made in U.S.A.
- Flush valve toilet
- Vitreous china
- High efficiency bowl operates using 1.1 gpf/4.0 Lpf to 1.6 gpf/6.0 Lpf dual function flush valve or 1.28 gpf/4.8 Lpf to 1.6 gpf/6.0 Lpf single function flush valves
- Elongated bowl
- 10" or 12" roughing-in
- Direct-fed siphon jet action
- Fully glazed 2" trapway
- Large 12" x 10" water surface
- 1-1/2" top spud
- 2 bolt caps

3543.001US Elongated bowl only, top spud

Nominal Dimensions:

752 x 356 x 381mm
(29-5/8" x 14" x 15")

Recommended working pressure – between
35 psi at valve when flushing and 80 psi static

Fixture only, less seat, bolt caps and flush valve

**Compliance Certifications -
Meets or Exceeds the Following Specifications:**

- ASME A112.19.2 for Vitreous China Fixtures
- cUPC Certified
- Buy American/ARRA Compliant

To Be Specified:

- Color: White
 - American Standard #5901.100 heavy duty open front less cover
 - American Standard #5905.100 extra heavy duty open front less cover
- Flush Valve:
 - American Standard Selectronic™ #6065.161.002 DC power (top Spud)
 - American Standard Selectronic™ #6025.161.002 DC power (top Spud)



SEE REVERSE FOR ROUGHING-IN DIMENSIONS

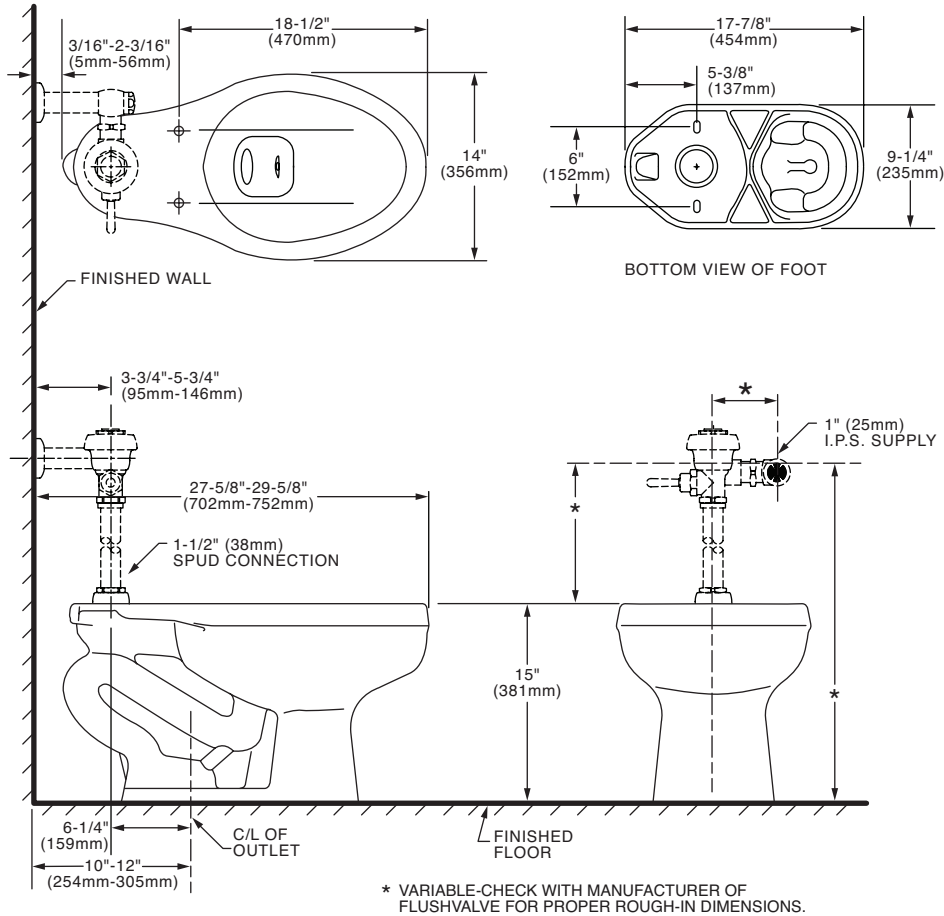


MEETS THE AMERICANS WITH DISABILITIES ACT GUIDELINES
AND ANSI A117.1 REQUIREMENTS FOR ACCESSIBLE AND USABLE
BUILDING FACILITIES - CHECK LOCAL CODES.



Buy American/ARRA Compliant

3543.001US



NOTES:

TO COMPLY WITH AREA CODE GOVERNING THE HEIGHT OF VACUUM BREAKER ON FLUSH VALVE, THE PLUMBER MUST VERIFY DIMENSIONS SHOWN FOR SUPPLY ROUGHING. FLUSH VALVE NOT INCLUDED AND MUST BE ORDERED SEPARATELY. THIS TOILET IS DESIGNED TO ROUGH-IN AT A MINIMUM DIMENSION OF 254MM (10") FROM FINISHED WALL TO C/L OF OUTLET.

IMPORTANT: Dimensions of fixtures are nominal and may vary within the range of tolerances established by ANSI Standard A112.19.2. These measurements are subject to change or cancellation. No responsibility is assumed for use of superseded or voided pages.

Buy American/ARRA Compliant