



135-160

Alto™



Elongated Front, Vitreous China, Two-Piece Toilet

## Features

- Contemporary Design
- 1.6 Gpf / 6.0 Lpf
- Two-Inch Fully Glazed Trapway
- 12" Rough-in
- Large 8-1/16" x 9-5/16" Water Surface
- Superior Boxed Rim, Siphon Jet SmartFlush™ Technology
- Outstanding Protection - The Mansfield® Limited Lifetime Warranty
- Available in White, Standard, Premium and Designer Colors (Consult Price Book for Specific Colors).
- Model 40 Chrome Plated Plastic Trip Lever (Consult Price Book for Additional Finishes)
- Upgrade with a Color-matched SmartClose™ or Primo™ Toilet Seat



Model 135-160  
Shown in Caribbean Shell with  
SB1200 Primo™ Toilet Seat

## Model Numbers

Order No.	Description	Approx. Wt.
135-160	Elongated front (1.6 Gpf/6.0 Lpf) two-piece toilet. 12" Rough-in. Includes tank trim and chrome plated plastic trip lever. Less toilet seat and supply. Specify color.	78 lbs. (35.1 kg)
135	Elongated front, toilet bowl only. 12" Rough-in. Less toilet seat. Specify color	47 lbs. (21.1 kg)
160	Tank and cover only with left-hand, chrome plated, plastic trip lever. Less supply. Specify color.	31 lbs. (13.9 kg)
125	Same as model 160, except with 14" Rough-in.	33 lbs. (15 kg)
125	Same as model 160, except with 14" Rough-in and color-matched trip lever. Specify color.	33 lbs. (15 kg)
159	Same as model 160, except with chrome plated metal trip lever.	31 lbs. (13.9 kg)
160RH	Same as model 160, except with right hand trip lever.	31 lbs. (13.9 kg)
161	Same as model 160, except with Fluidmaster 400A ballcock.	31 lbs. (13.9 kg)
165	Same as model 160, except with cover lock.	31 lbs. (13.9 kg)
171	Same as model 161, except with tank liner	31 lbs. (13.9 kg)
175	Same as model 160, except with cover lock and tank liner.	31 lbs. (13.9 kg)
180	Same as model 160, except with color-matched trip lever.	31 lbs. (13.9 kg)
190	Same as model 160, except with color-matched trip lever and tank liner.	31 lbs. (13.9 kg)
SB1175	Elongated, SmartClose™ toilet seat.	5.5 lbs. (2 kg)
SB1200	Elongated, Primo™ toilet seat.	5.5 lbs. (2 kg)



**Smartflush**  
Total Confidence Flushing System



# 135-160

Alto™

Elongated Front, Vitreous China,  
Two-Piece Toilet

## Features and Upgrades

### Three-Point Cushioned Tank-to-Bowl Connection

This assures perfect tank alignment in every direction. It permits fast, accurate, leakproof tank-to-bowl connections. Protects against tank breakage. . . can't be rocked loose. . . saves installation time. Furnished with brass nuts and bolts.



### 88 Anti-Siphon Ballcock

The 88 anti-siphon ballcock affords efficient toilet tank operation at high or low pressures. Adjustment screw allows water level adjustment without bending the float rod. Completely non-electrolytic and non-corrosive.



### 211 Flush Valve

The 211 flush valve provides 1.6 gpf – 6.0 Lpf water conservation efficiency with non-corrosive, long-life dependability. It seals tight every time. Won't rust or corrode.



### Add a Toilet Seat

With a simple touch, Mansfield's newest SmartClose™ toilet seat closes gently and quietly. Or upgrade your toilet with a popular Primo™ toilet seat. Made of durable, high impact, heavy-duty plastic. For all applications - Get More, Get Mansfield®.



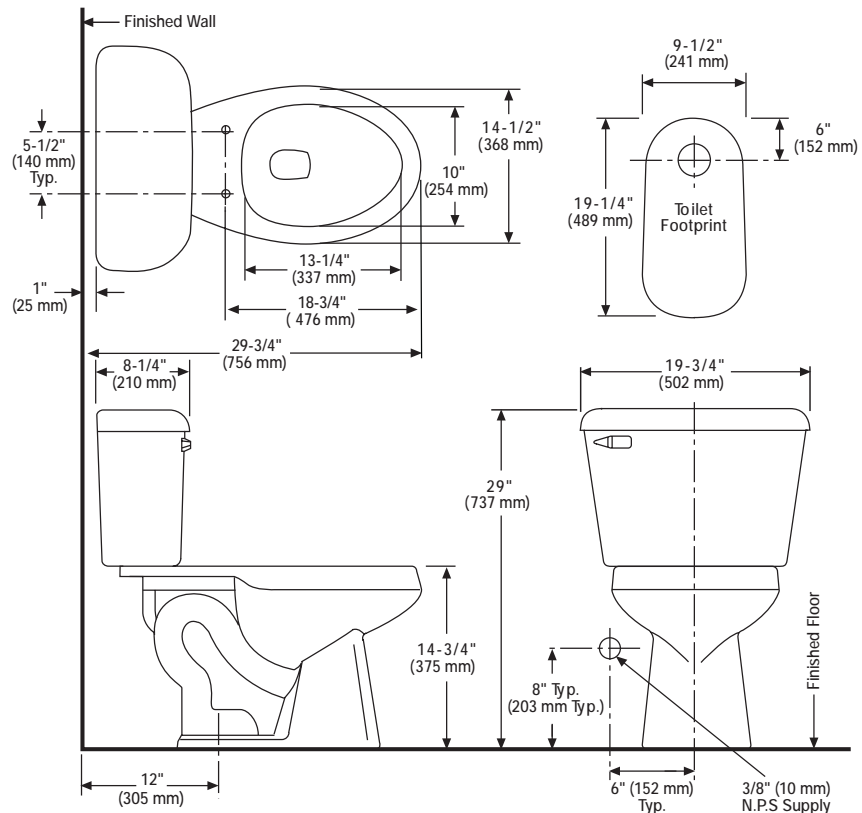
## Technical Information

### Specifications

Material	Vitreous China
Water Pressure Range	15 to 125 P.S.I.
Flush System	SmartFlush™ Flushing Technology
Water Usage	1.6 Gpf/6.0 Lpf
Water Surface Area	8-1/16" x 9-5/16"
Trap Diameter	2"
Trap Seal	2-5/8"
Rough-in	12" (14" Option)
Shipping Dimensions	Model 135 27-1/4" x 14-7/8" x 15-1/2" (692 mm x 378 mm x 394 mm)
	Model 160 19-3/4" x 10" x 14-3/4" (501 mm x 254 mm x 375 mm)
Shipping Weight	Model 135 - 46.9 lbs. (21 kg)
	Model 160 - 34.1 lbs. (15 kg)
Warranty	Vitreous China - Limited Lifetime
	Tank Trim - Limited One Year

These dimensions are nominal and are subject to change without prior notice.

Fixture performance and specifications meet or exceed, ANSI/ASME A112.19.2M, A112.19.6 standards and CSA B45 standard, and other state and local codes.



NOTE: Rough-in measurements may vary 1/4" (7.1mm ±).

See our complete line of acrylic, vitreous china, cast iron and enameled steel bathroom and kitchen fixtures, plastic tank trim and plumbing products.

**Mansfield**

Mansfield® Plumbing Products LLC • Sales Services Toll Free 877-850-3060 • Fax 419-938-6234  
Website: [www.mansfieldplumbing.com](http://www.mansfieldplumbing.com) • Email: [custserv@mansfieldplumbing.com](mailto:custserv@mansfieldplumbing.com)

Form No. M135160 Printed in U.S.A. 7/04  
© 2004 Mansfield Plumbing Products LLC