

PHILIPS

NORELCO

Nose and ear
hair trimmer

NT9105

NT9110

Cordless
Hair Remover



Register your product and get support at
www.philips.com/norelco

IMPORTANT SAFEGUARDS

When using a battery-operated appliance, basic precautions should always be followed, including the following:

Read these instructions before using this appliance.

WARNING

To reduce the risk of burns, fire or injury to persons:

1. Close supervision is necessary when this appliance is used by, on, or near children or invalids.
2. Use this appliance for its intended household use as described in this manual. Do not use attachments not recommended by Philips Electronics North America Corporation.
3. Never operate this appliance if it is not working properly, or if it has been dropped or damaged. For assistance call 1-800-243-3050.
4. Keep the appliance away from heated surfaces.
5. Never drop or insert any object into any opening.
6. Do not use outdoors or operate where aerosol (spray) products are being used or where oxygen is being administered.
7. Never put the appliance in direct sunlight or store at a temperature above 140°F.
8. Do not use this appliance with a damaged or broken cutter, as facial injury may occur.
9. Always put the protective cap on trimmer before storing.
10. This appliance is for use on human facial hair only. Do not use this appliance for any other purpose.
11. Do not attempt to recharge alkaline, heavy-duty or regular batteries in a nickel-cadmium battery charger.
12. If appliance will not be used on a regular basis, remove the battery to prevent possible damage due to chemical leakage. If battery does leak, remove it carefully. Do not allow bare skin to touch leaking fluid.
13. Dispose of battery properly. Do not incinerate. Battery may explode if overheated. Do not wrap in metal or aluminum foil. Wrap in newspaper before discarding. It is suggested that you contact your local town or city to determine proper battery redemption site(s) in your area.

SAVE THESE INSTRUCTIONS

Put It to the Test

Like many new products, your Philips Norelco nose and ear hair trimmer may take a little getting used to. If you are using a battery operated hair remover for the first time, or if you've been using a different brand, your skin may need time to adapt. Give yourself a little time to practice and determine the best motions for the best results.

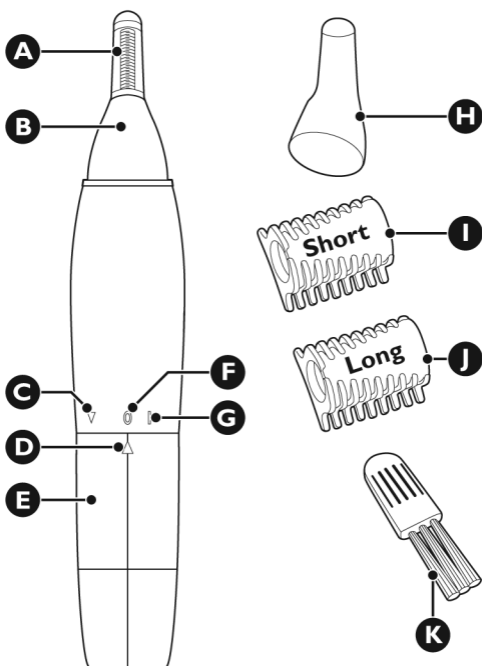
Use it exclusively for 3 weeks, or a bit longer for sensitive skin. If you alternate with other hair removal methods during this adjustment period, it may become more difficult to adapt to the Philips Norelco system.

If you're not convinced after 21 days, Philips Norelco will refund you the full purchase price as long as the request is received within 45 days of purchase.

Before Using

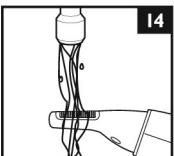
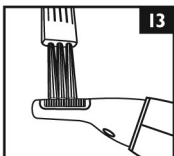
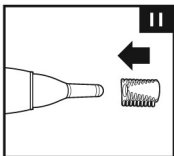
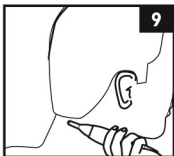
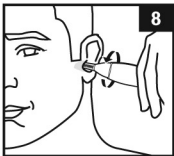
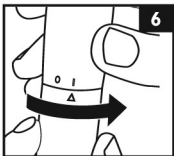
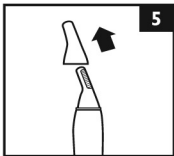
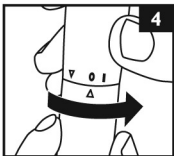
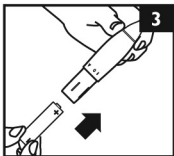
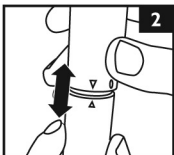
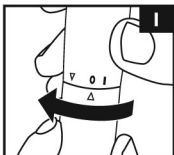
- ▶ Use this appliance for its intended household use as described in this manual.
- ▶ Before using, check trimmer for wear or damage. If the trimmer shows signs of wear or damage, do not use the trimmer as injury may occur.
- ▶ Be certain that your skin is clean. If you have sensitive skin, you may wish to apply talcum powder before and/or after use.
- ▶ It is not necessary to press hard to get a close result. Pressing too hard may cause skin irritation, and the trimmer will not function properly. In addition, do not use deodorant or alcohol-based lotions immediately before or after using. You may, however, want to use talcum powder.
- ▶ Clean the trimmer after each use. For instructions see chapter 'Cleaning'.
- ▶ Do not use while bathing, showering or immerse trimmer in water or other liquids as damage to the trimmer may occur.
- ▶ For hygienic reasons, it is recommended that the trimmer be used by only one person.

Features



Features

- A Trimmer
 - B Trimmer Head
 - C Battery Compartment 'Open' Indicator
 - D Setting Indicator
 - E Battery Compartment
 - F Trimmer 'Off' Indicator (0)
 - G Trimmer 'On' Indicator (I)
 - H Protective Cap
 - I Short Eyebrow Comb (NT9110 only)
 - J Long Eyebrow Comb (NT9110 only)
 - K Cleaning Brush (NT9110 only)
- 1 "AA" 1.5 Volt Alkaline Battery
Full Two-Year Warranty
45-Day Money-Back Guarantee



Inserting the Battery

- ▶ Make sure your hands and trimmer are dry when inserting the battery.
 - ▶ This appliance requires 1 “AA” 1.5 volt alkaline battery.
 - ▶ A new battery has an operating time of up to 2 hours.
 - ▶ Keep the appliance at a temperature between 40°F and 100°F.
 - ▶ Do not keep the appliance in direct sunlight.
- 1** Make sure trimmer is in the Off (0) position.
 - 2** Turn the battery compartment to the left so that the setting indicator points to the ‘open’ indicator (fig. 1).
 - 3** Remove the battery compartment by pulling it downwards (fig. 2).
 - 4** Put the battery in the battery compartment as shown making sure the (+) and (-) markings on the end of the battery match the (+) and (-) markings on the battery compartment (fig. 3).
 - 5** If the battery is not inserted properly, the appliance will not work.
 - 6** Slide the battery compartment cover back onto the trimmer.
 - 7** Turn the battery compartment to the right so that the setting indicator points to the ‘Off’ (0) indicator (fig. 4).
- ▶ If the appliance will not be used on a regular basis, remove the battery when storing the appliance to prevent possible damage due to chemical leakage.
 - ▶ If the battery does leak, remove carefully. Never allow your bare skin to come into contact with the leaking fluid.

Using the Trimmer

- ▶ You can use the trimmer to trim nose hair, ear hair or neck hair.
- ▶ NT9110 only, you can use the trimmer to trim eyebrows.
- ▶ Test trimmer on a small area of your arm or leg. If any sensitivity occurs, discontinue using immediately. Do not use trimmer on sensitive or irritated skin.
- ▶ Turn trimmer off before putting on or taking off attachments or cleaning.

Trimming Nose Hair

- 1** Make sure nasal passages are clean before trimming.
- 2** Remove the Protective Cap by pulling it off the trimmer (fig. 5).
- 3** Turn trimmer ON by turning the battery compartment to the right until the setting indicator points to the ‘I’ (on) indicator (fig. 6).
- 4** Carefully insert the trimmer tip into one nostril.
CAUTION: DO NOT INSERT THE TIP MORE THAN ¼" INTO NOSTRIL.
- 5** Slowly move the trimmer tip in and out of each nostril to remove unwanted hair (fig. 7).
- 6** For best results, make sure the side of the tip is held firmly against the skin. This will reduce the tickling effect that can occur.
- 7** Clean trimmer immediately after using.

Trimming Ear Hair

- 1** Clean outer area of ear and make sure it is free of wax.
- 2** Remove the Protective Cap by pulling it off the trimmer (fig. 5).
- 3** Turn the trimmer ON by turning the battery compartment to the right until the setting indicator points to the 'I' (on) indicator (fig. 6).
- 4** Pull ear flat to head with one hand and hold trimmer with the other hand.
- 5** Move trimmer tip around edges of ear to remove hairs extending beyond the outer ear. Carefully insert trimmer tip into outer ear no more than ¼" (fig. 8).

CAUTION: To avoid injury do not put any part of the trimmer into the ear. Do not insert the trimmer further than ¼" into the ear as this could cause damage to the eardrum.

- 6** Clean trimmer immediately after using.

Trimming Neck Hair

- 1** Remove the Protective Cap by pulling it off the trimmer (fig. 5).
- 2** Turn the trimmer ON by turning the battery compartment to the right until the setting indicator points to the 'I' (on) indicator (fig. 6).
- 3** Place the trimmer gently on the skin and move the appliance slowly over the skin against the direction of hair growth (fig. 9).
 - ▶ Make sure trimmer is in complete contact with the skin.
 - ▶ For optimum trimming, pull skin taut with one hand while using.
- 4** Clean trimmer immediately after using.

Trimming Eyebrows (NT9110 only)

- 1** Comb eyebrows in the direction of hair growth (fig. 10).
- 2** For trimming hairs 0.12in./3mm use the 'short' comb and for trimming hairs 0.2in./5mm use the 'long' comb.
 - ▶ If trimming for the first time, start by using the 'long' comb to prevent accidentally trimming hairs too short.
- 3** Slide the eyebrow comb onto the trimmer cutting element (fig. 11). The comb will only fit properly in one direction.
Make sure the comb slides into the grooves on both sides of the trimmer.
- 4** Move the comb over the eyebrow against the direction of hair growth from the outer tip towards the base of the nose (fig. 12).

BE CAREFUL TO KEEP TRIMMER AWAY FROM EYES AND EYELASHES.

- 5** Clean trimmer immediately after using.

Cleaning and Maintenance

- ▶ The trimmer head cannot be opened and detached from the appliance.
- ▶ Do not apply pressure or touch trimmer with hard objects as this may dent or damage trimmer.
- ▶ Never use the appliance if the trimmer is damaged or broken.
- ▶ The trimmer does not need any lubrication (oil).

After Each Use

- ▶ Clean the trimmer every time you have used it.
- ▶ Do not use compressed air, abrasive cleaning detergents, scouring pads or cloths, acetone etc. to clean the appliance.

1 Turn the trimmer OFF.

2 NT9110 only, clean the trimmer with the supplied brush (fig. 13). Pay extra attention to the edges of the trimmer.

Note: To remove all hairs, turn the trimmer on briefly and then clean the trimmer with the brush again.

3 Turn the trimmer ON.

4 Rinse the trimmer under warm water to remove any remaining hair/residue from the trimmer (fig. 14).

5 NT9110 only, the eyebrow combs can be rinsed clean under warm water.

6 Turn trimmer OFF and allow to dry completely.

Do not use a towel to dry the trimmer as damage could occur.

7 Put the protective cap on the trimmer for storage.

This appliance has no other user-serviceable parts. For assistance call 1-800-243-3050.

Assistance

For assistance visit our website:

www.philips.com/support or call toll free: 1-800-243-3050

Information is available 24 hours a day, 7 days a week.

Registration

Congratulations on your purchase and welcome to Philips Norelco!

To fully benefit from the support that Philips Norelco offers, register your product at www.philips.com/norelco

Full Two-Year Warranty

Philips Electronics North America Corporation warrants each new Philips Norelco Product, Models NT9105, NT9110 (except cutters), against defects in materials or workmanship for a period of two years from the date of purchase, and agrees to repair or replace any defective product without charge.

IMPORTANT: This warranty does not cover damage resulting from accident, misuse or abuse, lack of reasonable care, the affixing of any attachment not provided with the product or loss of parts or subjecting the product to any but the specified batteries.* Use of unauthorized replacement parts will void this warranty.

PHILIPS ELECTRONICS NORTH AMERICA CORPORATION WILL NOT PAY FOR WARRANTY SERVICE PERFORMED BY A NON-AUTHORIZED REPAIR SERVICE AND WILL NOT REIMBURSE THE CONSUMER FOR DAMAGE RESULTING FROM WARRANTY SERVICE PERFORMED BY A NON-AUTHORIZED REPAIR SERVICE. NO RESPONSIBILITY IS ASSUMED FOR ANY SPECIAL, INCIDENTAL OR CONSEQUENTIAL DAMAGES.

In order to obtain warranty service, simply go to www.philips.com/norelco or call 1-800-243-3050 for assistance. It is suggested that for your protection you return shipments of product by insured mail, insurance prepaid. Damage occurring during shipment is not covered by this warranty.

NOTE: No other warranty, written or oral, is authorized by Philips Electronics North America Corporation.

This warranty gives you specific legal rights, and you may also have other rights which vary from state to state. Some states do not allow the exclusion or limitation of incidental or consequential damages, so the above exclusion and limitations may not apply to you.

*Read enclosed instructions carefully.

Manufactured for:

Philips Consumer Lifestyle

A Division of Philips Electronics North America Corporation

P.O. Box 10313, Stamford, CT 06904

Norelco is a Registered Trademark of Philips Electronics North America Corporation.

PHILIPS is a Registered Trademark of Koninklijke Philips Electronics N.V.

© 2010 Philips Electronics North America Corporation. All Rights Reserved.

PHILIPS

NORELCO

45-DAY MONEY-BACK GUARANTEE

If you are not fully satisfied with your Philips Norelco Product, Philips Norelco will refund you the full purchase price.

The product must be shipped prepaid by insured mail, insurance prepaid, and have the original sales receipt, indicating purchase price and the date of purchase, enclosed. We cannot be responsible for lost mail. The product must be postmarked no later than 45 days from the date of purchase. Philips Norelco reserves the right to verify the purchase price of the product and limit refunds not to exceed suggested retail price.

To obtain money-back guarantee return authorization form, call 1-800-243-3050 for assistance. Please allow 4-6 weeks for delivery of check.