



Covered by one or more of
U.S. Patent 6,951,073 and
patents pending

ALLCLEAR[®]

Cordless Mosquito Mister



OPERATOR'S MANUAL

1-888-9NO-BITE

www.allclearmister.com

READ AND SAVE THESE INSTRUCTIONS

QUESTIONS OR COMMENTS

Please contact Universal Pest Solutions if you have any questions about your ALLCLEAR® Cordless Mosquito Mister at:

1-888-9NO-BITE or www.allclearmister.com

**Universal Pest Solutions, LP
5950 Berkshire Lane, Suite 400
Dallas, TX 75225**



INTRODUCTION

Congratulations on your purchase of the ALLCLEAR® Cordless Mosquito Mister, the only portable mosquito control device that when used with ALLCLEAR Mosquito Mister Concentrates delivers immediate and reliable control of mosquitoes and other biting insects* in your yard. The ALLCLEAR Cordless Mosquito Mister's patented misting technology delivers a 3-minute, ultra-fine mist that creates a barrier of biting insect protection of up to 2,000 sq. ft. for as long as 6 hours.**

Together, the ALLCLEAR Cordless Mosquito Mister and ALLCLEAR Concentrates quickly kill and repel mosquitoes and other biting insects, giving you and your family the freedom and confidence to enjoy hours of outdoor activities without the annoyance of biting insects.

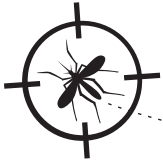
Incorporate the ALLCLEAR products into your complete mosquito management program. Enjoy your ALLCLEAR products and use responsibly.

TABLE OF CONTENTS

Safety Information and Instructions	4
Mister Description.....	5
Mister Set-Up	6
Charging & Recharging the Battery.....	6
Filling the Tank.....	7
Moving the Mister	7
Operation.....	8
Positioning the Mister	8
Activating Mist Cycle.....	9 & 10
Maintenance	11
Storage and Winterization	11
Troubleshooting.....	12
Repair and Service	13
Product Registration.....	13
Warranty.....	13
Frequently Asked Questions.....	14

* When used with ALLCLEAR Concentrates. Other insects include: ticks, gnats, horse flies, stable flies, deer flies, face flies and others.

** Results may vary based on environmental factors such as rain, wind, sunlight, temperature, and humidity.



Safety Information & Instructions



SAFETY AND PRECAUTIONS

CAUTION: ALLCLEAR Cordless Mosquito Mister and ALLCLEAR Mosquito Mister Concentrate must be operated in compliance with federal law, including all label directions.

CAUTION: Clear the treatment area of people, pets, and food when ALLCLEAR Mister is misting.

CAUTION: Make sure unit Tank Cap is securely fastened at all times to prevent access and accidental exposure.



SEGURIDAD Y PRECAUCIONES

PRECAUCIÓN: El ALLCLEAR Atomizador de Mosquitos Inalámbrico y los concentrados del ALLCLEAR Atomizador de Mosquitos tiene que ser operado en cumplimiento con la ley federal, incluyendo todas las instrucciones de la etiqueta.

PRECAUCIÓN: Durante el ciclo del atomizador asegure que no haya gente, mascotas o comida en el área de cobertura.

PRECAUCIÓN: Asegúrese de que el tapón del tanque esté sujetado con seguridad siempre para impedir el acceso y el ser expuesto accidentalmente.

PLEASE READ ENTIRE OPERATOR'S MANUAL AND ALLCLEAR CONCENTRATE DIRECTIONS BEFORE PLACING AND OPERATING YOUR ALLCLEAR CORDLESS MOSQUITO MISTER.

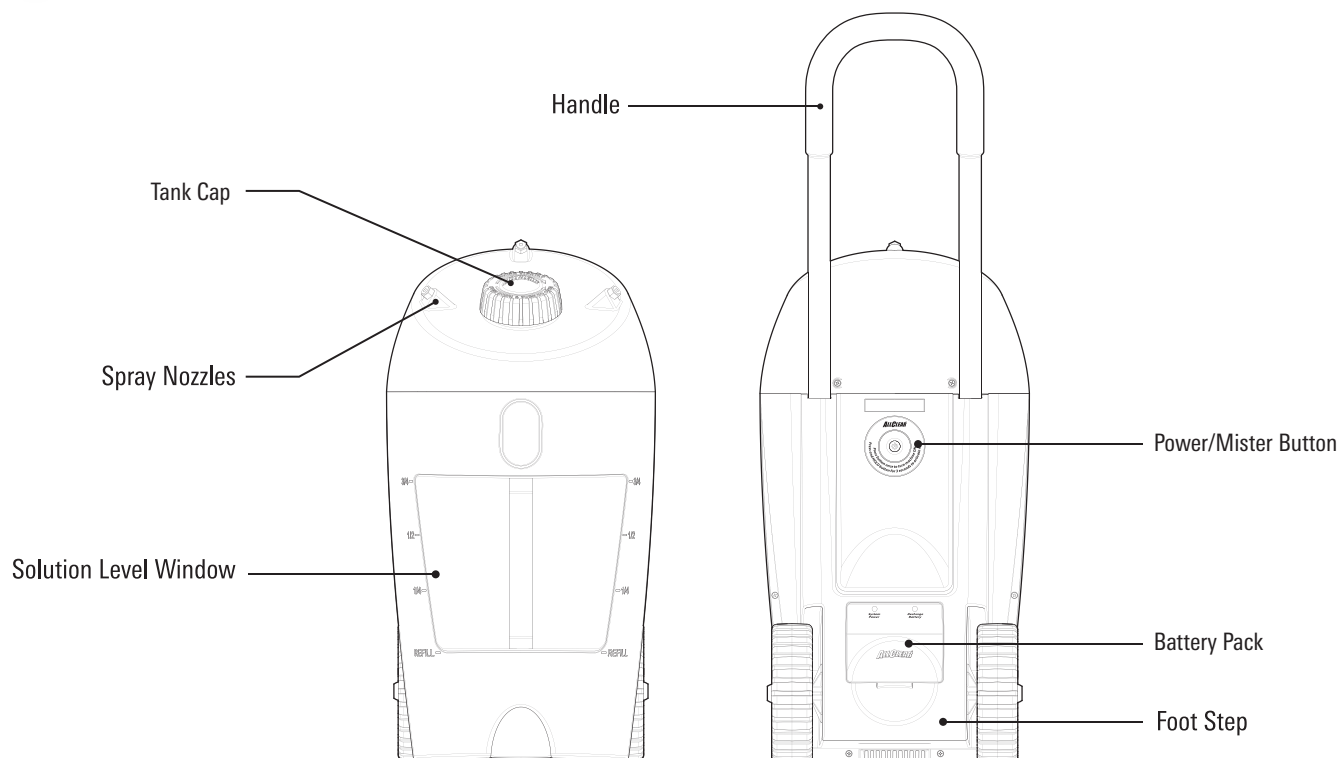
GENERAL

- ALLCLEAR Cordless Mosquito Mister is designed for use ONLY with ALLCLEAR Mosquito Mister Concentrates. *(Not Included. Sold Separately.)*
- For outdoor use only.
- Read and follow ALLCLEAR Mosquito Mister Concentrate directions completely before use.

OPERATIONAL

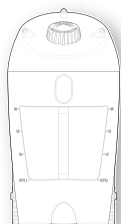
- Operate Mister when needed and when mosquitoes are most active – typically dawn and dusk.
- Allow mist to dissipate before occupying treated area (usually 2 to 5 minutes).
- For optimal results, avoid using the Mister during high winds (>10 mph), heavy rainfall, fog, or when outside air temperatures fall below 50 degrees Fahrenheit.
- Do not activate when wind conditions might create a mist that can blow back to the user.
- Direct nozzles away from bodies of water, and eating and cooking areas when food is present.
- Charge battery indoors.
- Be a good neighbor — some individuals may have sensitivities to pesticides or object to them drifting onto their property.

Mister Description



PARTS INCLUDED

Cordless Mosquito Mister



Battery Charging Adapter

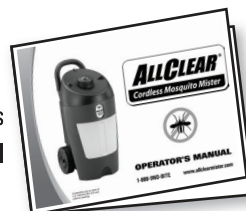


Remote Control

(included: CR2032 or equivalent; 3V 20MM lithium coin battery)



Operator's Manual



YOU'LL NEED: Sold Separately



Botanical Pyrethrum Concentrate

OR



Synergized PLUS Concentrate

Mister designed for use ONLY with ALLCLEAR Concentrates. For more information about concentrates or where to purchase, visit: www.allclearmister.com



Mister Set-Up

CHARGING & RECHARGING THE BATTERY

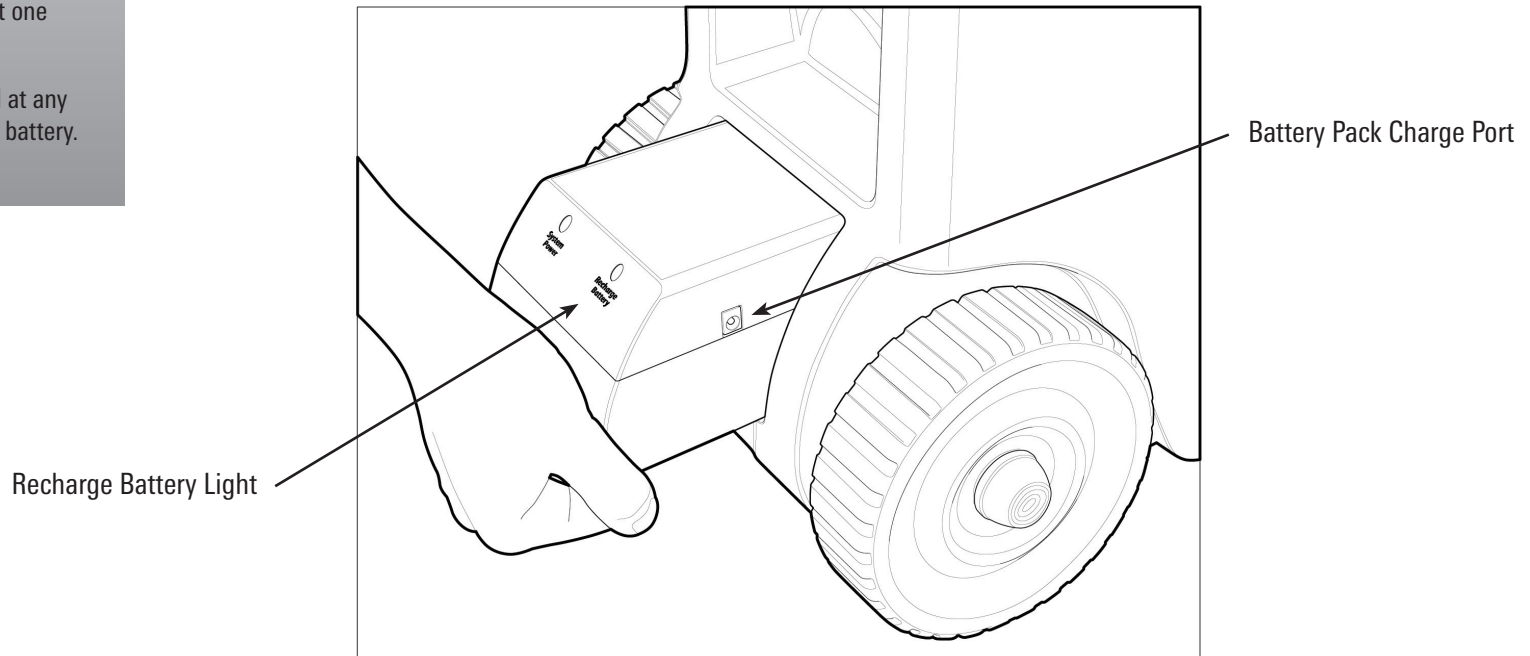
Charge the ALLCLEAR Battery Pack for 4 hours or until light on Charging Adapter is Green. Fully charged, battery will operate for approximately 15 mist applications before needing to be recharged. To charge Mister battery:

1. Locate Battery Pack at rear base of Mister.
2. Place hand under Battery Pack, squeeze latch, and pull Pack outward to remove.
3. Insert Battery Charging Adapter cord into Battery Pack Charge Port.
4. Charge Battery Pack for 4 hours or until light on Charging Adapter is Green.
5. Unplug Adapter from Battery Pack and reinsert Pack into base of Mister. Battery Pack is fully inserted if power light illuminates when green Power/Mist button is pressed.

NOTE: When light on Charging Adapter is Green, battery is fully charged and Mister is ready for use. If light on Adapter is Red, charge battery for at least 4 hours or until the light is Green. If Recharge Battery light is on, charge battery as directed above.

IMPORTANT TIPS

- Before first use and at the start of each season, charge Battery Pack for 4 hours. Allow approximately 2 to 4 hours for later battery charges.
- Recharge battery when Recharge Battery light on Battery Pack is lit.
- Fully charged, Mister battery will operate for approximately 15 mist applications before needing to be recharged.
- User can charge Mister Battery Pack for 10 minutes to get one mist application.
- Battery may be recharged at any time without harming the battery.





Mister Set-Up

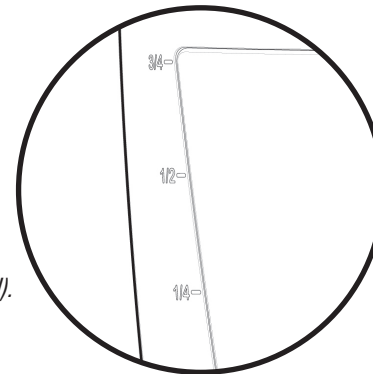
FILLING THE TANK

1. Remove Tank Cap from the top of the unit by pushing down and turning Cap counterclockwise.

NOTE: *Beneath Tank Cap is a Filter. Leave in place when filling Tank.*

2. Slowly fill Tank with water to the '1/2' full indicator (see Mister front panel). For best results use a garden hose or watering can.
3. Slowly add one entire bottle of ALLCLEAR Concentrate. (Before adding Concentrate, read Concentrate instructions carefully.)
4. Slowly finish filling Tank with water until solution level reaches bottom of filter. Be sure to fill Tank slowly to avoid foaming of solution.
5. Replace Tank Cap.

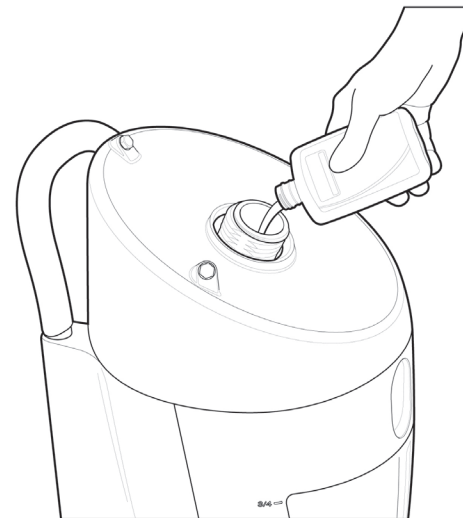
NOTE: *Steps 2, 3, & 4: filling in this order correctly mixes solution (see Concentrate label). Solution will remain mixed for several months. If solution remains in Mister Tank longer than several months, gently rock Mister back and forth for ten seconds to re-agitate solution. Fasten Tank Cap securely before rocking Mister.*



MOVING THE MISTER

The ALLCLEAR Cordless Mosquito Mister can be easily moved and positioned throughout the yard for optimal coverage.

1. Before moving Mister, make sure Tank Cap is securely fastened.
2. Pull up on Mister Handle to extend handle to full length.
3. Tilt Mister toward you and roll into desired coverage area.
4. Push down Mister Handle when Mister in place or no longer moving.



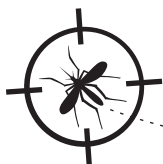
IMPORTANT TIPS

- The ALLCLEAR Cordless Mosquito Mister is designed for use ONLY with ALLCLEAR Mosquito Mister Concentrates. Not Included. Sold Separately.
- Use a garden hose or watering can to fill Mister Tank with water.
- Be sure to fill the Tank slowly to avoid foaming of the solution.
- Refill Mister only when Tank is completely empty and/or when solution level is below Refill indicator on front of tank. This prevents incorrect solution mix which could affect operation.

TRANSPORTING MISTER IN A VEHICLE

The Mister can be transported in a car or other vehicle:

1. Empty Tank of misting solution.
2. Securely fasten Tank Cap.
3. Position Mister upright in vehicle to prevent leaking of solution from Tank Cap if tank is not empty.
4. Secure Mister to prevent movement when vehicle is in motion.



Operation

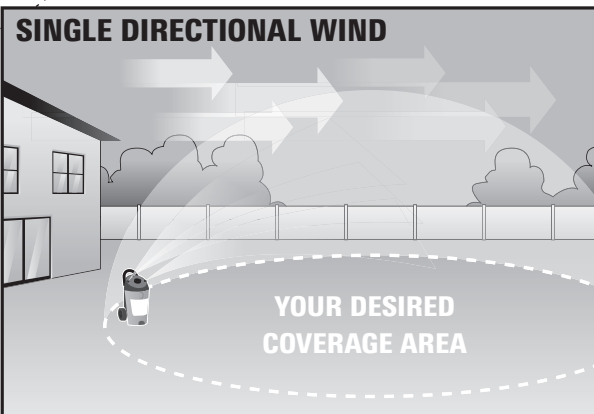
POSITIONING THE MISTER

Proper placement of the ALLCLEAR Mister is important for optimal insect control. In certain situations, users may need to mist more than once and/or move the Mister to another location to achieve optimal results (see Important Tips).

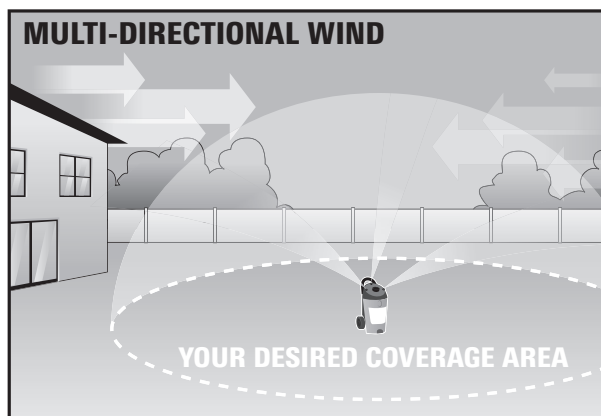
1. Determine area to be protected.
2. Pull up on Mister Handle and roll into desired coverage area.
3. Establish direction of prevailing wind and position Mister according to wind conditions (see illustrations).

EXAMPLE:

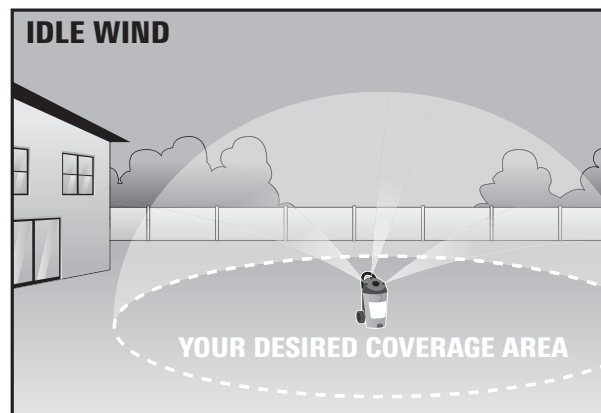
Treating a patio area. Determine prevailing wind. Depending on wind direction, place Mister on either side of, in the center of, or a few feet beyond center of patio so that prevailing winds will carry mist solution directly over patio and surrounding areas.



Position Mister at edge of desired coverage area with Mister nozzles facing mist area so that prevailing wind will carry mist solution over target area.



Position Mister in the center of desired coverage area so that the wind will carry mist solution equally throughout desired coverage area.

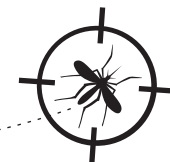


Position Mister in the center of desired coverage area or a few feet beyond center of coverage area.

IMPORTANT TIPS

- Mister performs best if positioned and activated inside of or near desired coverage area.
- For optimal control, users may need to mist an area more than once and/or move the Mister to another part of the treatment area in the following situations:
 - Areas of very heavy mosquito populations
 - Areas planned for large gatherings (more people bring increased mosquito activity)
 - Areas where wind is idle since solution may not be carried as far into treatment area
- Place Mister and direct Mister nozzles away from bodies of water and eating or cooking areas when food is present.
- Leave at least 2 to 3 feet between Mister and barrier such as a fence, house, or wall.

Operation



IMPORTANT TIPS

- Press the green Power/Mist Button to turn Mister power ON.
- Mister will automatically power OFF after 10 minutes of inactivity
- Users will experience immediate relief from biting insects. Best results are realized 10-15 minutes after misting.
- In areas of high mosquito populations or in situations where many people are inside coverage area, a second mist application may be necessary.
- Avoid using Mister during high winds (>10 mph), heavy rainfall, fog, or when outside air temperatures fall below 50 degrees Fahrenheit or other times when insects are typically not active.

ACTIVATING MIST CYCLE

WHEN TO ACTIVATE:

The ALLCLEAR Cordless Mosquito Mister can be used any time of day to provide immediate and reliable control of mosquitoes, gnats, ticks, and other biting insects for up to 6 hours in an area of up to 2,000 sq. ft.* It is recommended that users activate Mist Cycle 10 to 15 minutes before spending time outdoors to allow for mist solution to take maximum effect (especially when mosquitoes are most active). See ALLCLEAR Concentrate label and/or go to www.allclearmister.com for additional application instructions.

WHAT TO EXPECT:

The ALLCLEAR Cordless Mosquito Mister kills and repels mosquitoes and other biting insects with an ultra-fine mist solution of water and ALLCLEAR Mosquito Mister Concentrate. The mist solution is atomized out from Mister and carried by the wind into desired coverage area. The atomized mist appears like a light fog and is visible for the first 5-10 feet from the machine during the 3-minute Mist Cycle. Even when no longer visible, mist continues to move throughout coverage area to kill and repel mosquitoes and creates an invisible barrier from insects for hours. Users will experience immediate relief from biting insects. Best results are realized 10-15 minutes after misting. In areas of high mosquito populations or when there are a lot of people occupying an area, a second mist application may be necessary.

Depending on weather and wind conditions, mist may swirl high and low around Mister and/or it may move directly out from unit or drift behind Mister during Mist Cycle. This is normal operation if mist is moving into and toward the desired coverage area. If mist moves toward an undesirable area, stop Mist Cycle with Remote Control by pressing OFF button, allow mist to dissipate, and reposition Mister so mist is carried by wind into desired area. (See page 8 for 'Positioning the Mister' instructions.)

* When used with ALLCLEAR Concentrates. Other insects include: ticks, gnats, horse flies, stable flies, deer flies, face flies and others.



Operation

ACTIVATING MIST CYCLE

ACTIVATING WITH REMOTE CONTROL

1. Before activating Mist Cycle, make sure no people, pets, or food items are in the mist area.
2. Press green Power/Mist Button on back of Mister once to turn unit ON. System Power light on Battery Pack will flash indicating unit is ON.

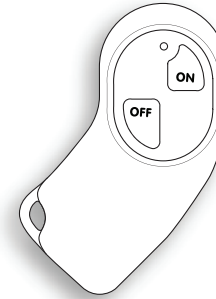
NOTE: Mister will automatically power OFF after 10 minutes of inactivity.

3. Press and HOLD for one second Remote Control ON button.
4. Mister begins a 12 second audible countdown before 3-minute Mist Cycle begins.
5. From a location outside the misting area, watch mist movement to ensure mist moves toward desired area.

NOTE: If mist moves toward an undesired area (e.g., bodies of water, neighboring properties, etc.), stop Mist Cycle by pressing OFF button once on Remote Control device. See 'To Stop Mist Cycle' below.

6. Mist Cycle automatically ends after 3 minutes.
7. Re-enter and enjoy area after mist has dissipated (usually 2-5 minutes).

CAUTION: Store Remote Control device in an area inaccessible to children.



ACTIVATING DIRECTLY FROM MISTER

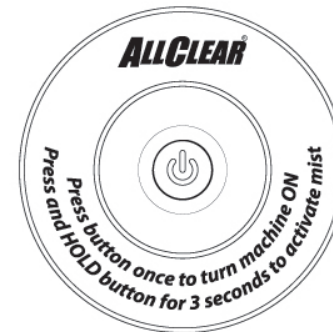
1. Before activating Mist Cycle, make sure no people, pets, or food items are in the mist area.
2. Press green Power/Mist Button on back of Mister once to turn unit ON. System Power light on Battery Pack will flash indicating unit is ON.

NOTE: Mister will automatically power OFF after 10 minutes of inactivity.

3. Press and HOLD green Power/Mist Button for 3 seconds until Mister begins to beep.

NOTE: 3 second 'Press and HOLD' feature is intended to prevent accidental activation from unauthorized users.

4. Follow Steps 4 through 8 above.



TO STOP MIST CYCLE

Option 1: Use Remote Control device to stop unit before or during Mist Cycle by pushing the OFF button once on the Remote Control device.

Option 2: Before misting begins push green Power/Mist Button on Mister once to stop Mist Cycle.

NOTE: Use Remote Control device to stop misting whenever possible. Do not stop Mist Cycle from unit while misting. If Mister is stopped, it will reset to original settings. The next time Mister is activated it will begin a new 3-minute Mist Cycle with a 12



Maintenance

Take care of the ALLCLEAR Cordless Mosquito Mister with these simple steps:

1. Check Mister Battery and solution level periodically (every 3 to 4 weeks) to ensure battery has charge and enough solution for operation.
2. Refill Mister only when Tank is completely empty and/or when solution level is even with Refill indicator mark on front of tank. This prevents incorrect solution mix which could affect operation. (See 'Filling the Tank' instructions on page 7).

Storage & Winterization

During months when outdoor temperatures fall below 40°F, store Mister in a sheltered location away from outdoor elements and in an area with temperatures above freezing (32°F, 0°C). When storing Mister for extended periods of time, store with an empty Tank.

1. To empty Tank, use all misting solution as per recommended operating instructions.
2. Roll and store Mister in a sheltered location with temperatures above freezing (32°F, 0°C).

CLEANING MISTER NOZZLES (OPTIONAL)

If desired, users can clean Mister nozzles before storing for the winter.

1. Turn nozzles counterclockwise. (Use wrench if needed.)
2. Remove nozzle. Nozzle filter is attached to nozzle.

IMPORTANT: Do not unscrew filter that is attached to nozzle.

3. Run warm water over nozzle/filter until clean.
4. Refasten nozzles onto Mister. Put small amount of water in Mister and activate to verify nozzles are tight enough. Empty tank of residual water.

NOTE: Do not unscrew filter from nozzle when cleaning. If filter becomes unscrewed from nozzle, keep nozzle tip face down. If nozzle is tipped upward the valve (a cylindrical brass piece) may fall out. If this occurs, note the line on valve and insert it back into the nozzle with the line facing user.



Troubleshooting

PROBLEM	POSSIBLE CAUSE	SOLUTION
Mister is not misting after pushing green Power/Mist button	<ol style="list-style-type: none"> 1. Not pressing and holding the green Power/Mist button for 3 seconds 2. Mister Battery is low 3. Mister Tank empty 4. Power/Mist button not functioning 5. None of the above 	<ol style="list-style-type: none"> 1. Press and Hold Power/Mistbutton for 3 seconds 2. Remove Battery Pack and charge battery (page 6) 3. Check solution level on front of Tank. Fill Tank if empty. 4. Activate Mister with Remote Control 5. Contact Customer Service at 1-888-9NO-BITE
Remote Control device will not operate Mister	<ol style="list-style-type: none"> 1. Not pressing Remote's ON button for at least ONE second 2. Remote Control batteries are low 3. 'Possible Causes' 2 & 3 in above section 4. Remote Control is not functioning 5. None of the above 	<ol style="list-style-type: none"> 1. Press and hold Remote ON button for one full second 2. Replace Remote Control batteries 3. Try steps 2 & 3 in above section 4. Try activating Mister directly from the unit 5. Contact Customer Service at 1-888-9NO-BITE
Mister will not Power ON after pushing green Power/Mist button	<ol style="list-style-type: none"> 1. Mister Battery is low 2. Battery Pack is not pushed in far enough 3. None of the above 	<ol style="list-style-type: none"> 1. Remove Battery Pack and charge battery (page 6) 2. Push Battery Pack in further 3. Contact Customer Service at 1-888-9NO-BITE
Mister is not controlling mosquitoes/other biting insects	<ol style="list-style-type: none"> 1. Mister is not positioned properly 2. Tank is empty/solution low 3. Mister solution needs to be agitated 4. Concentrate and water dilution is incorrect 	<ol style="list-style-type: none"> 1. See page 8 for 'Positioning the Mister' 2. Check solution level at front of Tank. Fill if empty. 3. Gently rock Mister back and forth for 10 seconds (page 7) 4. Contact Customer Service at 1-888-9NO-BITE
Only 1 or 2 nozzels are misting	<ol style="list-style-type: none"> 1. Clogged nozzels 2. Clogged tubing 	<ol style="list-style-type: none"> 1. See page 11 for 'Nozzle Cleaning' instructions 2. Contact Customer Service at 1-888-9NO-BITE

Repair & Service

Universal Pest Solutions is committed to excellent quality and service. If you have any questions about your ALLCLEAR Cordless Mosquito Mister or require replacement parts, please contact us at:

1-888-9NO-BITE or 1-888-966-2483 or visit our Web site at: www.allclearmister.com

Please have ALLCLEAR Mister serial number ready when calling customer service. Serial number is located on the inside of the Tank Access Door.

Record Serial Number here: _____

Product Registration

Go online and register your ALLCLEAR Cordless Mosquito Mister today!

Why Register?

- Activate Mister warranty
- Provide valuable product feedback
- Choose to review special offers and tips
- Chance to win free product!

To register go to www.allclearmister.com.

Warranty

UNIVERSAL PEST SOLUTIONS, LP

LIMITED WARRANTY: ALLCLEAR® Cordless Mosquito Mister

What Is Covered:

With respect to the ALLCLEAR Cordless Mosquito Mister, this warranty covers any defects in parts, materials, or workmanship, subject to the exclusions set forth below.

How Long Coverage Lasts:

The warranty period is 18 months or 1.5 years from the date of the first consumer purchase of the ALLCLEAR Cordless Mosquito Mister.

Condition of Coverage:

This warranty applies only when the ALLCLEAR Cordless Mosquito Mister is used for personal, family, or household purposes.

What is not Covered:

This warranty does not cover the following: (a) damage caused by use with unauthorized or non-Universal Pest Solutions parts; (b) damage caused by accident, misuse, abuse, flood, fire, or external causes; (c) damage caused by use in a manner inconsistent with the permitted or intended uses described in the Operator's Manual; (d) damage caused by service performed by anyone other than a representative of Universal Pest Solutions, LP; (e) an ALLCLEAR Cordless Mosquito Mister that is modified to significantly alter its functionality or capability, without the prior written consent of Universal Pest Solutions; (f) consumable parts, including batteries used in the remote control but excluding the battery used in the main unit of the ALLCLEAR Mosquito Mister, unless damage to a consumable part occurs due to a defect in ALLCLEAR Cordless Mosquito Mister parts, materials, or workmanship; (g) an ALLCLEAR Cordless Mosquito Mister that is rented, leased, or used for any other commercial purpose; and (h) an ALLCLEAR Cordless Mosquito Mister whose Universal Pest Solutions serial number is removed or defaced.

NO PERSON, AGENT, DEALER, OR DISTRIBUTOR IS AUTHORIZED OR EMPOWERED TO GIVE ANY OTHER WARRANTY OR TO ASSUME ANY OTHER LIABILITY ON BEHALF OF UNIVERSAL PEST SOLUTIONS.

UNIVERSAL PEST SOLUTIONS, LP SHALL NOT BE LIABLE FOR CONSEQUENTIAL DAMAGES RESULTING FROM ANY BREACH OF WARRANTY OR CONDITION. BECAUSE SOME STATES DO NOT ALLOW THE EXCLUSION OR LIMITATIONS OF CONSEQUENTIAL DAMAGES, THE FOREGOING LIMITATION OR EXCLUSION MAY NOT APPLY TO YOU.

What Universal Pest Solutions Will Do:

During the warranty period, Universal Pest Solutions, LP will have the option to repair, replace, or refund in full the original purchase price of any ALLCLEAR Cordless Mosquito Mister that is defective in parts, materials, or workmanship. When appropriate, repair may include or consist of replacing defective parts.

How to Get Service:

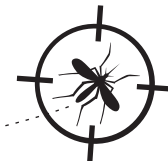
If you believe that your ALLCLEAR Cordless Mosquito Mister contains a defect in parts, materials, or workmanship, please do the following:

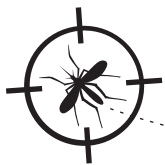
- Telephone Universal Pest Solutions at 1-888-9NO-BITE (1-888-966-2483). Please state the nature of your problem and have your proof of purchase (e.g., sales receipt) on hand. Also have your Serial Number ready which is located on the bottom of unit Battery Pack.

Universal Pest Solutions, LP is committed to excellent quality and service. If you have any questions or comments about your ALLCLEAR Cordless Mosquito Mister, please contact Universal Pest Solutions, LP at the following address:

Universal Pest Solutions, LP
5950 Berkshire Lane, Suite 400
Dallas, Texas 75225
1-888-9NO-BITE (1-888-966-2483)
www.allclearmister.com

This warranty gives you specific legal rights, and you may have additional legal rights that vary from State to State.





Frequently Asked Questions

What is the ALLCLEAR Cordless Mosquito Mister?

The ALLCLEAR Cordless Mosquito Mister is the fastest way to clear a yard of mosquitoes and other biting insects. In just 3 minutes ALLCLEAR reduces mosquitoes by more than 90% for as long as six hours.

How large of a yard or area will it protect?

ALLCLEAR has been proven to protect up to 2,000 for as long as six hours. The Mister can be easily repositioned or moved to another area of the yard for additional or customized mosquito control.

How does the ALLCLEAR Mister work?

It works by atomizing an ultra-fine mist solution of water and ALLCLEAR Mosquito Mister Concentrate. The mist controls mosquitoes immediately and then creates an invisible barrier of insect protection for hours.

What kind of insecticide does the ALLCLEAR Cordless Mosquito Mister use?

ALLCLEAR Concentrates contain either botanical Pyrethrum which is derived from dried Chrysanthemum flowers or Permethrin, its synthetic equivalent. Both are low risk, low toxicity products that are widely used on animals and humans. They are some of the most useful all-around insecticides available today and are used in nearly every insect control category including a variety of household products such as human head-lice shampoo, indoor foggers, and pet flea sprays.

Is the insecticide OK to use in yards with animals and kids?

The active ingredients in the ALLCLEAR concentrates, botanical pyrethrum or permethrin, are low risk, low toxicity products that are widely used on animals and humans. Both are commonly used as flea and tick control products on dogs and on cats applied as dips, shampoos and sprays. They are also used on birds and other exotic animals for parasite control. In addition, they are used on children for head lice control.

How soon after I mist can I go outside?

Each mist application is 3 minutes long. People and pets cannot be in the treatment area while the unit is misting, but can enjoy the yard once the mist dissipates, usually within 2 to 5 minutes.

Can I use my Mister to protect the area around my pool?

The Mister is very effective at treating areas where you and your family spend time outdoors, including the area around your pool.

What kinds of insects does the ALLCLEAR Cordless Mosquito Mister eliminate?

The ALLCLEAR Mister and Concentrates kill and repel mosquitoes, gnats, stable flies, horse flies, face flies, and deer flies.

Will it kill good insects too like bees and butterflies?

It's important to mist when mosquitoes are most active – dusk and dawn – typically the time when beneficial insects are NOT active as the ALLCLEAR concentrates can be harmful to other flying insects if they come in contact with the mist application. Try to mist away from flower gardens and other areas that are known to attract good insects.

Where should I place my ALLCLEAR Cordless Mosquito Mister?

Simply place the Mister in the outdoor living area you want to protect and activate. Winds carry the mist throughout the desired coverage area (up to 2,000 sq. ft.), killing mosquitoes on contact and repelling others for up to 6 hours. For additional or customized insect coverage, the Mister can be easily repositioned or moved to another area of the yard.



This product has been tested and complies with the specifications for a Class B digital device, pursuant to Part 15 of the FCC Rules. These limits are designed to provide reasonable protection against harmful interference in a residential installation. This equipment generates, uses, and can radiate radio frequency energy and, if not installed and used according to the instructions, may cause harmful interference to radio communications. However, there is no guarantee that interference will not occur in a particular installation. If this equipment does cause harmful interference to radio or television reception, which is found by turning the equipment off and on, the user is encouraged to try to correct the interference by one or more of the following measures:

- Reorient or relocate the receiving antenna
- Increase the separation between the equipment or devices
- Connect the equipment to an outlet other than the receiver's
- Consult a dealer or an experienced radio/TV technician for assistance

FCC ID: W3CACM2000

This device complies with Part 15 of the FCC Rules. Operation is subject to the following two conditions: (1) this device may not cause harmful interference, and (2) this device must accept any interference received, including interference that may cause undesired operation.

Changes or modifications not expressly approved by the party responsible for compliance could void the user's authority to operate the equipment

UniversalPest

S O L U T I O N S

1-888-9NO-BITE or www.allclearmister.com

**Universal Pest Solutions, LP
5950 Berkshire Lane, Suite 400
Dallas, TX 75225**

**ACM3100
v1: 11-09**