



AVVIO™ COLLECTION

AVVIO \ ah VEE oh \ : Italian for a new beginning and a fresh start

Quick Reference Guide

- Luxecast™ Solid Surface is durable, stain-resistant and easy to clean
- Overflow Plumbing is integral and invisible
- Linear Overflow is sleek and low profile for added beauty
- Toe-Tap Drain adds to the ease of fill and water release
- Proudly Cast in the USA
- IAPMO/cUPC Certified

Verona® Bath



71 x 32.8 x 25.0
Center Drain

Matte

VRF7133BCXXXXM - \$6,800

Gloss

VRF7133BCXXXXG - \$7,500

Gloss Inside/Matte Outside

VRF7133BCXXXGM - \$7,500

Matte Inside/Gloss Outside

VRF7133BCXXXMG - \$7,500

TOE-TAP DRAIN

Chrome

LZ70827 – included with bath

Torino™ Bath



61.5 x 36.0 x 22.6
Center Drain

Matte

TRF6236BCXXXXM - \$6,540

Gloss

TRF6236BCXXXXG - \$7,240

Gloss Inside/Matte Outside

TRF6236BCXXXGM - \$7,240

Matte Inside/Gloss Outside

TRF6236BCXXXMG - \$7,240

Brushed Nickel

LZ70826 - \$159 additional

Urbino™ Bath



55.9 x 32.5 x 20.9
End Drain

Matte

URF5633BUXXXXM - \$6,540

Gloss

URF5633BUXXXXG - \$7,240

Gloss Inside/Matte Outside

URF5633BUXXXGM - \$7,240

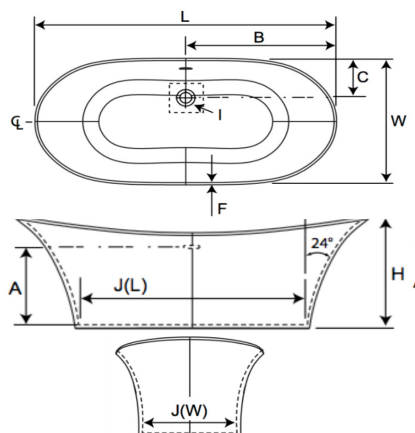
Matte Inside/Gloss Outside

URF5633BUXXXMG - \$7,240

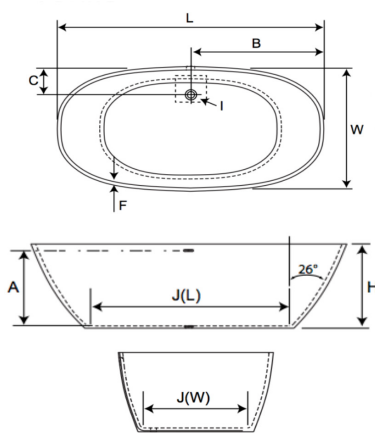
Oil-Rubbed Bronze

LZ70845 - \$159 additional

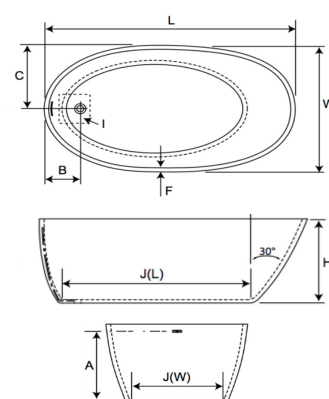
Verona® Bath



Torino™ Bath



Urbino™ Bath



Letter	Description	Verona® Bath	Torino™ Bath	Urbino™ Bath
-	Product Weight (unfilled)	285 lb	245 lb	200 lb
-	Floor Loading (filled)	84 lb/ft ²	78 lb/ft ²	85 lb/ft ²
-	Operating Gallons	70 gal	86 gal	74 gal
L	Outer Length	71"	61.5"	55.9"
W	Outer Width	32.8"	36"	32.5"
H	Overall Height	25"	22.6"	20.9"
A	Overflow Height	15.5"	17.2"	16.4"
B	Long Edge to Drain Center	35.5"	30.8"	8"
C	Short Edge to Drain Center	11"	8.5"	16.3"
F	Deck Width	1"	1"	1"
I	Floor Cutout for Drain	4" x 4"	4" x 4"	4" x 4"
J	Interior Dimensions (LxW)	42" x 14.3"	37" x 25"	40" x 21"

General Cleaning Instructions

- Use mild dish soap and warm water; wipe clean with a soft, slightly damp cloth
- Use rubbing alcohol for more difficult stains like grease, oil, paint or ink; wipe clean with a soft cloth

Things to Avoid

- Abrasive cleansers and solvents, harsh chemicals or those containing lime removal elements
- Abrasive cloths or pads
- Razor blades or other sharp objects
- After-market bath products containing dye