



**Features:**

- Cast brass valves
- Ceramic disc valve cartridge
- Adjustable hot limit safety stop
- Pressure Balance cartridge maintains constant output temperature in response to changes in relative hot and cold supply pressures
- Concealed mounting hardware
- Available with Cross or Lever Handle
- Adjustable showerhead

Pictured: 842/451 Shower Set with Lever Handle

Showerhead Maximum Flow Rate: 2.5 GPM (9.5L/min)

Kit Options	Handle Type	Product Number
Shower Set	Cross	842/450
Shower Set	Lever	842/451
PB Shower Valve Set	Cross	842/130
PB Shower Valve Set	Lever	842/131



Rough & Trim Options	Handle Type	Product Number
Shower Set Trim Only*	Cross	842/485
Shower Set Trim Only*	Lever	842/486
PB Shower Valve Set Trim Only**	Cross	842/535
PB Shower Valve Set Trim Only**	Lever	842/536
Showerhead Only		842/083
Rough Only		899/260/191



Available Finishes:	Finish Code
Polished Chrome	100
Old Bronze	105
Brushed Nickel	144
Platinum Nickel	150
Antique Nickel	444

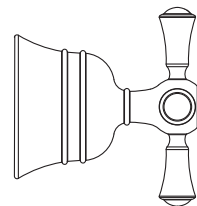
\* Includes Pressure Balance Shower Valve Trim & Showerhead

\*\*Pressure Balance Shower Valve Trim Only

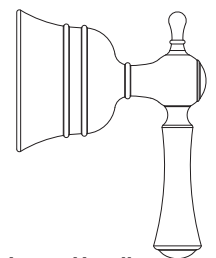
Extension Kits	Product Number
PB Handle Extension Kit	A3195.191

ROUGH-IN DIAGRAM SHOWN ON REVERSE SIDE

**Handle Options:**



Cross Handle



Lever Handle


### CODES & STANDARDS

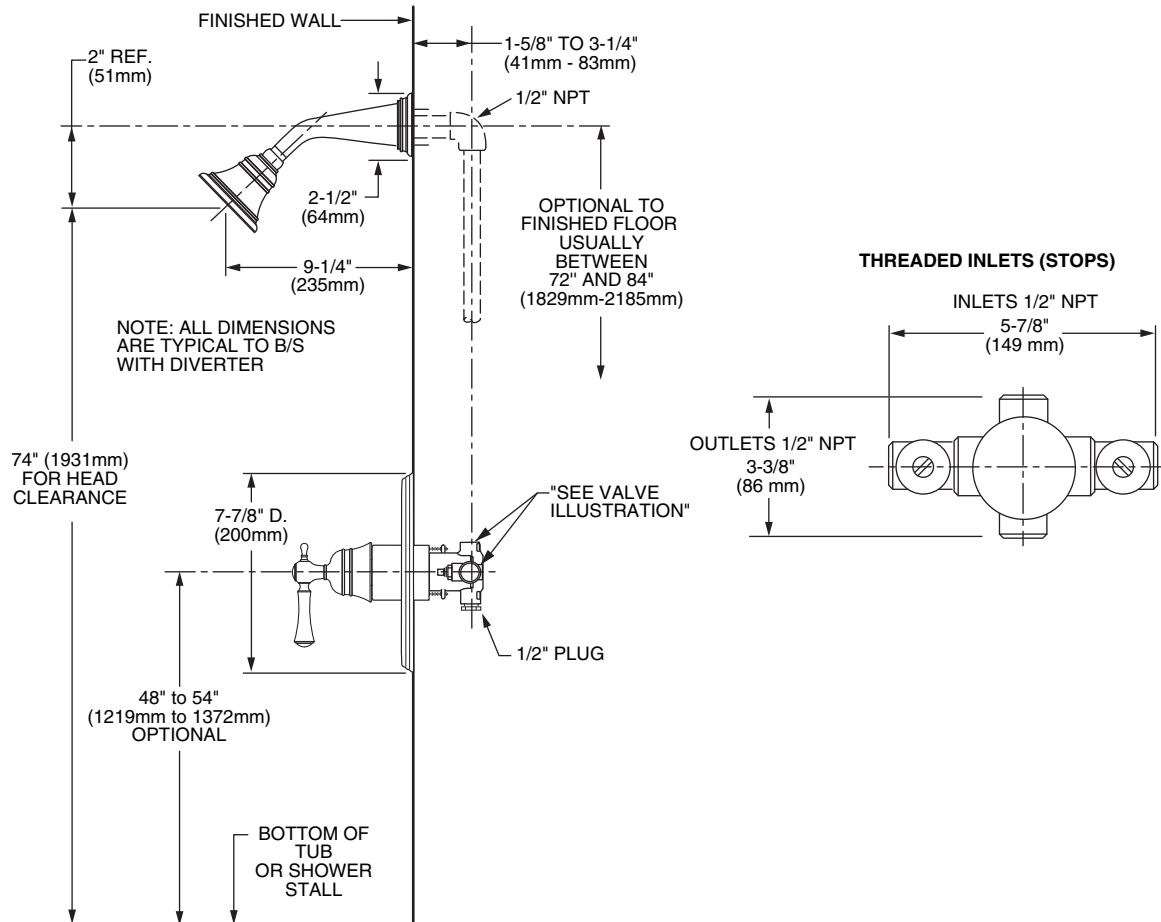
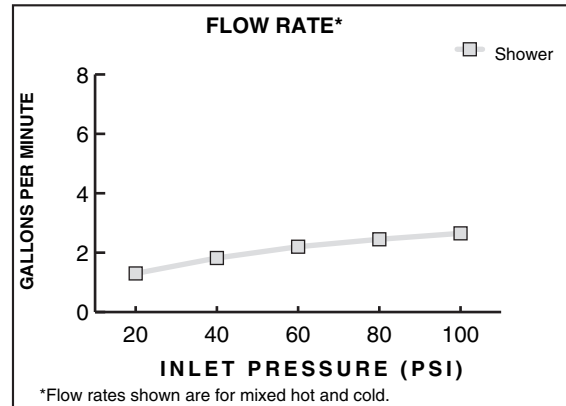
These products meet and exceed the following codes and standards:

**ASME A112.18.1**

**CSA B125**

**ASSE1016**

 Meets the American Disabilities Act Guidelines and **ANSI A117.1** Requirements for the physically challenged.



**IMPORTANT:** These measurements are subject to change or cancellation. No responsibility is assumed for use of superseded or voided pages.