



## Dehumidifier

WINIX INC.  
120 Prairie Lake Rd., Unit E  
East Dundee, IL 60118  
USA

**Please be sure to specify a model number.**

Tel: 1.847.551.9900  
Fax: 1.847.551.9200  
Toll-free: 1-877-MY-WINIX (699-4649)  
Email: [info@winixinc.com](mailto:info@winixinc.com)  
Website: [www.winixinc.com](http://www.winixinc.com)

**Please visit our website or contact us for information on Winix products.**

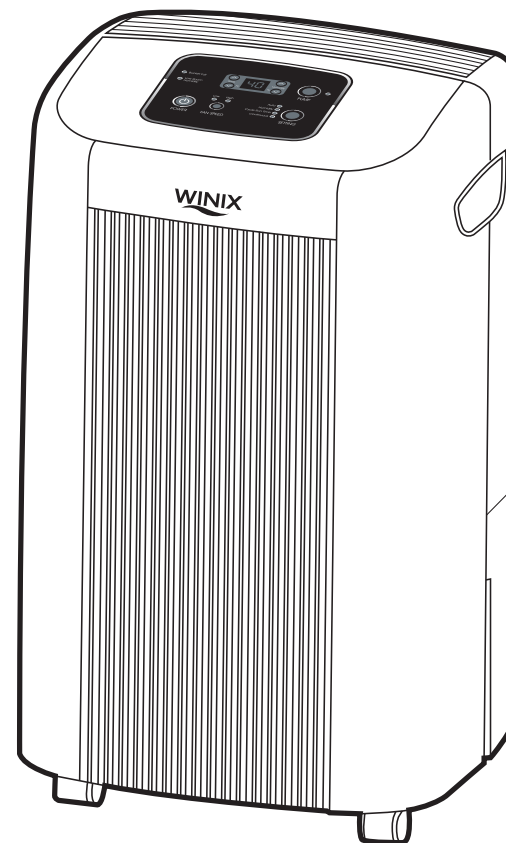
NOTE: IF YOU EXPERIENCE A PROBLEM, PLEASE CONTACT CUSTOMER SERVICE. REFER TO YOUR WARRANTY. DEFECTIVE UNITS SHOULD BE RETURNED TO THE PLACE WHERE ORIGINALLY PURCHASED. DO NOT ATTEMPT TO REPAIR THE APPLIANCE YOURSELF. DOING SO WILL VOID YOUR WARRANTY AND MAY RESULT IN GREATER DAMAGE TO THE DEHUMIDIFIER OR PERSONAL INJURY.

© WINIX INC.



# Dehumidifier

Model WDH 851/871 Owner's Manual



## CAUTION:

Read and follow all safety rules and instructions before operating this equipment

## TABLE OF CONTENTS

Warranty.....	2	Control panel.....	6,7
Package Contents.....	2	Water Disposing Options.....	8
Safety Instructions.....	3	Care and Maintenance.....	9
Electrical Requirements.....	4	Troubleshooting.....	10
Key Features.....	5	Error Codes/Product Specifications.....	11
Setting Up Your Dehumidifier.....	5		

## WARRANTY

### WINIX Dehumidifier Limited Warranty

When installed, operated and maintained according to all instructions supplied with the product, if this appliance fails due to a defect in material and workmanship within one year from the date of purchase, call 1-877-MY-WINIX (699-4649) to arrange for free repair. If the sealed refrigerant system is defective within five years from the purchase date, call 1-877-MY-WINIX (699-4649) to arrange for free repair. All warranty coverage applies for only 90 days from the date of purchase if this product is ever used for other than private family purposes.

### This warranty covers only defects in material and workmanship. WINIX will NOT pay for:

1. Expendable items that can wear out from normal use, including but not limited to filters, belts, light bulbs, and bags.
2. A service technician to instruct the user in correct product installation, operation or maintenance.
3. A service technician to clean or maintain this product.
4. Damage to or failure of this product if it is not installed, operated or maintained according to all the instructions supplied with the product.
5. Damage to or failure of this product resulting from accident, abuse, misuse or use for other than its intended purpose.
6. Damage to or failure of this product caused by the use of detergents, cleaners, chemicals or utensils other than those recommended in all instructions supplied with the product.
7. Damage to or failure of parts or systems resulting from unauthorized modifications made to this product.

### Disclaimer of implied warranties; limitation of remedies

Customer's sole and exclusive remedy under this limited warranty shall be product repair as provided herein. Implied warranties, including warranties of merchantability or fitness for a particular purpose, are limited to one year or the shortest period allowed by law. WINIX shall not be liable for incidental or consequential damages. Some states and provinces do not allow the exclusion or limitation of incidental or consequential damages, or limitation on the duration of implied warranties of merchantability or fitness, so these exclusions or limitations may not apply to you.

This warranty applies only while this appliance is used in the United States or Canada. This warranty gives you specific legal rights, and you may also have other rights which vary from state to state.

## PACKAGE CONTENTS

- WINIX Dehumidifier
- Owner's Manual
- 18 ft. Pump Drain Hose

## SAFETY INSTRUCTIONS

### IMPORTANT CAUTIONS FOR USING YOUR DEHUMIDIFIER.



To reduce the risk of fire, electrical shock, injury, or damage to the dehumidifier, these safety precautions must be followed:

- Do not place the power cord near a heater.
- Do not use an electrical outlet near flammable or combustible materials such as gasoline, propane, paint thinners, etc.
- Do not disassemble or modify dehumidifier parts or components. It may cause electric shock and failure.
- Plug in the power cord properly.
- Do not turn the unit on and off by inserting or pulling out the power plug.
- Do not damage the power cord or use an unspecified power cord.
- Do not modify power cord length.
- Do not share the outlet with another appliance.
- Always plug into a grounded outlet. Not grounding unit may cause electrical shock.
- Unplug the unit if it emits strange sounds, odors, or smoke.
- Do not use an electrical outlet if it is loose or damaged.
- Do not operate or plug in unit with wet hands or in a wet environment.
- Ventilate area before operating dehumidifier. Check for the presence of natural gas or the buildup of other combustible vapors.
- Do not clean the dehumidifier with water. Water may enter the unit and degrade the insulation resulting in an electrical shock.
- If water enters the product, turn off the dehumidifier's power switch, then unplug the unit. Do not plug in unit until it has been inspected by an authorized repair service.
- Because the fan rotates at high speed during operation, always unplug dehumidifier before attempting any recommended maintenance or cleaning.
- Do not block the inlet or outlet. It may cause unit to fail or to operate inefficiently.
- Do not remove plug from outlet by pulling on the cord.
- When not in use, turning the unit off will save energy. Unplug the dehumidifier when not using for long periods of time.
- Make sure the dehumidifier is placed in the area you want to dehumidify. It is not designed to dehumidify the entire house.
- For proper operation, the dehumidifier should only be placed on a level floor.
- Close all doors, windows and other openings to the room. The dehumidifier must operate in an enclosed area to be effective.
- When removing the filter, be aware that some metal parts may have sharp edges and may cause injury.
- To clean, use a soft cloth; do not use wax, thinners, or strong detergents as they may change the color of the unit or cause surface damage.
- Be sure to replace the bucket properly after emptying to prevent water from collecting on the floor causing damage to some types of flooring.
- This unit is designed to operate in low temperature conditions below 65 degrees however dehumidification may slow down resulting in less accumulation of water.
- Do not put a pet or house plant where it will be exposed to direct air flow. This could injure the pet or plant.
- Do not use the water collected in the bucket for drinking purposes. It is not sanitary and could cause illness.
- Operation without filter will cause unit failure. Insert the filter securely. Clean it every two weeks. (See maintenance.)
- Do not allow children to play with this product.

## ELECTRICAL REQUIREMENTS

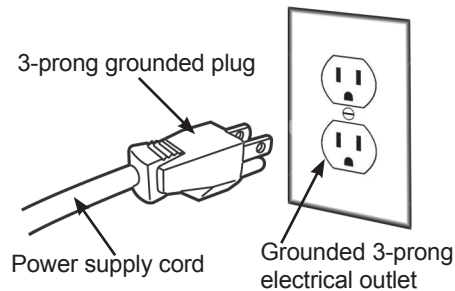
**OBSERVE ALL LOCAL CODES AND ORDINANCES.**

**DO NOT, UNDER ANY CIRCUMSTANCES, REMOVE THE POWER SUPPLY CORD GROUND PRONG.**

**ELECTRICAL GROUND IS REQUIRED ON THIS APPLIANCE.**

**A 115-VOLT 60Hz, AC ONLY, 15A FUSED AND PROPERLY GROUNDED ELECTRICAL SUPPLY IS REQUIRED.**

A time delay fuse or time delay circuit breaker is recommended. Use a dedicated circuit serving only this appliance.



**DO NOT USE AN EXTENSION CORD.**

### **WARNING**

To reduce the risk of fire, electric shock or injury to persons, read the important **SAFETY INSTRUCTIONS** found on page 3 before operating this appliance.

### **RECOMMENDED GROUNDING METHOD**

For your personal safety, this appliance must be grounded. This appliance has a power supply cord with a 3-prong grounded plug. To minimize possible shock hazard, the cord must be plugged into a matching grounded electrical outlet that complies with the latest edition of the National Electrical Code and all local codes and ordinances.

If a grounded 3-prong electrical outlet is not available, it is the personal responsibility and obligation of the customer to have one installed by a qualified electrician.



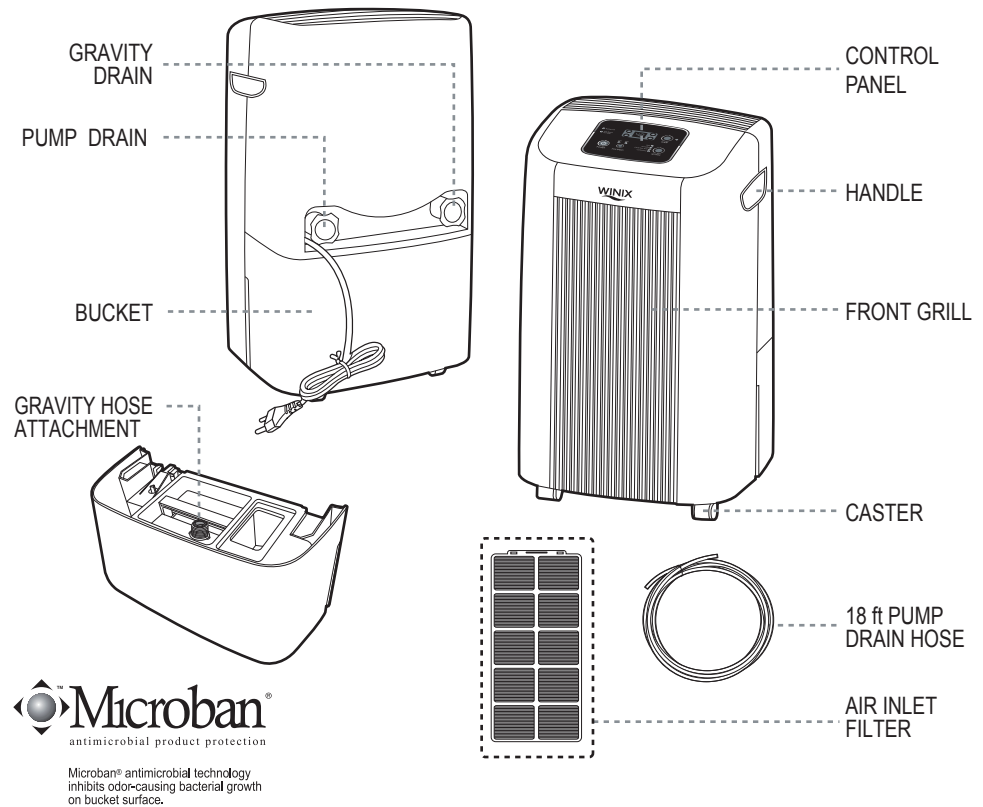
### **ELECTRICAL SHOCK HAZARD**

Plug into a grounded 3-prong outlet.

- Do not remove ground prong.
- Do not use a two-prong adapter.
- Do not use an extension cord.

Failure to follow these instructions can result in death, fire or electrical shock.

## KEY FEATURES OF YOUR DEHUMIDIFIER



## SETTING UP YOUR DEHUMIDIFIER

### **CHOOSING THE PROPER LOCATION**

- \* Place the dehumidifier on a level floor strong enough to support the unit with a full bucket of water
- \* For best performance, allow at least 12-18 inches of air space on all sides of the unit for good air circulation
- \* Use the dehumidifier:
  - in the basement to help prevent moisture damage.
  - in the kitchen, laundry room, bathroom, and spa/exercise areas that have excessive moisture
  - to prevent moisture damage anywhere books or valuables are stored
  - during construction or remodeling to reduce drying time for drywall and paint

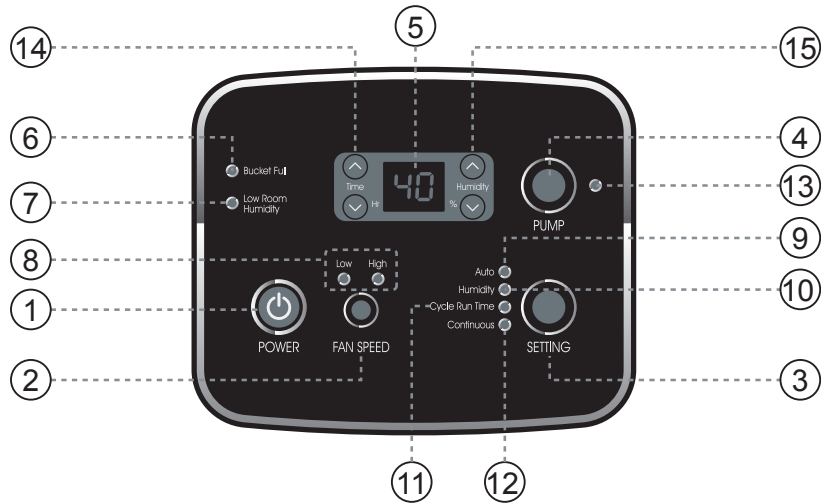
### **DEFROST OPERATION**

- The dehumidifier has a built-in defrost control that senses frost buildup on the evaporator coils
- During defrosting, the compressor will automatically turn off; the fan will continue running to defrost the coils until a majority of the frost has melted.

### **AUTOMATIC SHUTOFF**

- When the bucket is full, or when the bucket is not in the proper position, the bucket full light will turn on and the unit automatically shuts off
- The bucket must be placed in the proper position for the dehumidifier to work. The light will stay on and the dehumidifier will not run if the bucket is not in the proper position.
- The dehumidifier will shut off once the desired humidity setting has been reached.

## CONTROL PANEL



### 1. Power ON/OFF

Pressing **button (1)** will turn the machine on. Pushing again will turn the machine off. Please note unit may run on and off depending on humidity levels and programmed humidity set.

### 2. Select Operating Mode

#### \* Auto Mode

When the unit is turned on for the first time or by cycling through the settings using the **setting button (3)** until **auto indicator (9)** is lit, operation begins in auto mode. "50" will appear in the **display (5)** and the auto indicator (9) will light up. In this setting, humidity level and fan speed is adjusted for optimum comfort (50%) with no manual adjustment needed. If a **humidity adjustment arrow (15)** or **fan speed button (2)** is pressed while in auto mode, the unit will switch to humidity mode automatically.

#### \* Humidity Mode

To set desired humidity level when not in auto mode, push **setting button (3)** until **humidity indicator (10)** is lit. The humidity levels will adjust in increments of 5% beginning at a low of 35% and reaching a maximum of 70%. Humidity will show in the display when adjusting humidity level. To adjust humidity level up or down, press **humidity adjustment arrows (15)** until desired humidity level is reached.

#### \* Cycle Run Time

To set Cycle Run Time, push **setting button (3)** until **cycle run time indicator (11)** is lit. In this setting, the unit will run for either 3, 6, or 12 hours, then shut off for 3, 6, or 12 hours, then turn on

again in the same cycle. To program Cycle Run Time, the **cycle run time indicator (11)** must be lit. Cycle Run Time can be adjusted by pushing the **timer adjustment arrows (14)** up or down to set operating time for 3, 6, or 12 hours. The cycle timer function will continue until you change the setting or turn the unit power off. In this setting, the unit will operate on the last humidity setting programmed. During cycle run time operation, compressor and fan may shut off depending on programmed humidity level.

#### \* Continuous Mode

To set the unit into continuous mode, push **setting button (3)** until **continuous indicator (12)** is lit. Continuous mode will run the compressor and fan continuously until it is powered off or until another setting is inputted. When continuous mode is programmed, "Co" will be displayed. Fan speed can be adjusted in this mode.

### 3. Select Your Fan Speed

By pressing **fan speed button (2)**, fan speed will change. The **indicator (8)** of selected fan speed will light (High or Low). In Auto Mode, fan speed will adjust the fan speed automatically depending how close the room humidity is to 50%. For example, if the room is 70%, the unit will need to pull in air quickly, so it will turn on high. Once the room reaches 55%, the unit will slow the amount of air flow and turn the fan on low. Fan Speed can be adjusted in all settings except for auto mode.

### 4. Water Removal Indicators

#### \* Pump ON

Pump setting button is selected when using the automatic pump feature with included 18 ft. hose. To select the pump as your water removal option, press the **pump button (4)**. When the **pump indicator (13)** is on, the pump will automatically remove the water in the bucket only when the bucket is full. The pump light must be on at all time to use this function. It will only turn on for a period of 30 seconds to remove the water. The pump will turn off after 30 seconds and not turn on again until the bucket is full again. It is normal for a small amount of water to remain in the bucket after the pump has operated; this is to protect the pump. The pump button should be off at all times except when the user chooses this as their option to remove collected water (See Page 7, Option 3). The pump option should only be selected when there is a 1/4" hose properly installed in the pump drain location. If the pump button is pressed when using other disposal options, E3 (Error message – See page 10) will be displayed. If other disposal options are needed, push the pump button again to turn off the pump function.

#### \* Bucket Full Indicator

When the collection bucket is full, **bucket full indicator (6)** will light. The unit will not run with the bucket full. Dispose of water and replace bucket properly.

### 5. Low Room Humidity Indicator

**Low room humidity indicator (7)** will light when unit detects low humidity levels.

**Dehumidifier pint capacity is defined as how much moisture it can draw out of the air in a 24 hour period in 80 degrees F and 60% Relative Humidity. Once humidity begins to drop from 60%, the amount of moisture in the air begins to fall, which will result in less water in your bucket.**

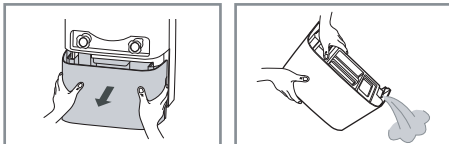
**NOTE: THIS UNIT IS EQUIPPED WITH A POWER FAILURE AUTO RESTART. IN THE EVENT OF A POWER FAILURE THIS UNIT WILL TURN BACK ON TO ITS LAST SETTING ONCE POWER IS RESTORED.**

## WATER DISPOSING OPTIONS

### OPTION 1, EMPTYING MANUALLY

1. Pull out the bucket, grasping upper and lower handles.
2. Carry the bucket by grasping the inside handle of the bucket.
3. After emptying the bucket, replace the bucket in the dehumidifier.

NOTE: Dehumidifier will not work when the BUCKET FULL light is on or without the bucket properly placed in the unit.



### OPTION 2, GRAVITY DRAIN HOSE

(Garden Hose Not Provided)

1. Take off GRAVITY DRAIN CAP by turning the cap counterclockwise. (Fig.1)
2. Remove DRAIN CONNECTOR from the bucket. (Fig.2)
3. Next, screw the DRAIN CONNECTOR to a standard garden hose by turning clockwise. (Fig.3)
4. Reattach the DRAIN CONNECTOR end of garden hose to the dehumidifier (Fig.4) then check hose for kinks or obstructions. The position of the hose at the floor drain must be lower than DRAIN CONNECTOR.
5. Keep the DRAIN CAP for future use when emptying bucket manually.

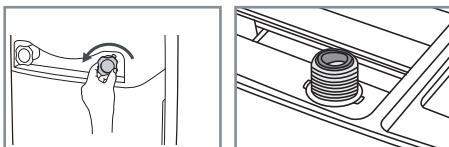


Fig.1

Fig.2

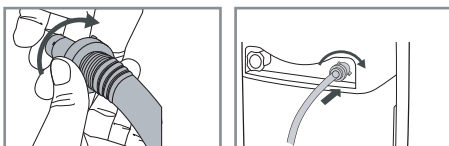


Fig.3

Fig.4

### OPTION 3, PUMP DRAIN

1. Remove the PUMP DRAIN CAP by turning clockwise (Reverse thread). (Fig.1)
2. Remove the drain-hole GREY RUBBER PLUG by pulling out while pressing in on the coupler. (Fig.2) *Keep the DRAIN CAP and PLUG for future use.*
3. Feed the 1/4-inch hose provided through the hole in the DRAIN CAP. (Fig.3)
4. Insert the end of hose into the drain hole (Fig.4), then screw DRAIN CAP back onto the unit. Place the other end of the hose in the location you want the water to go: to a floor drain, a water container, or through a basement window to the outdoors. (Pump can lift water up to 15 feet above the unit.) Check hose for kinks or other obstruction. Make sure end of hose will not be submerged in water as this may cause a backflow into the unit and cause a leak.

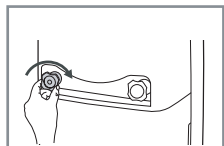


Fig.1

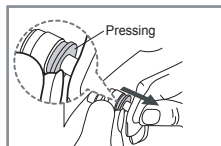


Fig.2

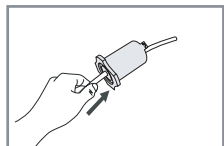


Fig.3

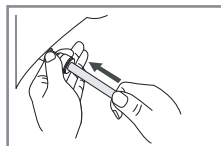


Fig.4

5. In the unlikely event the hose comes loose during pump operation due to vibration, re-attach hose to continue automatic pump removal of water.



**CAUTION:** Do not remove the bucket while the pump is operating. This will cause the dehumidifier to stop operating and result in an "E3" error message. ALSO: The pump drain hose should not be both under water AND at a height that is above the dehumidifier. This can cause a "back flow" to the dehumidifier and cause the dehumidifier to stop working resulting in an "E3" error message. Following an "E3" error, the unit must be unplugged and reset to operate. (See Error Code section of this manual.)

## CARE AND MAINTENANCE



### WARNING

- Disconnect power supply cord from receptacle before performing any maintenance.

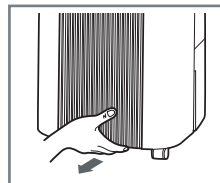


Fig.1

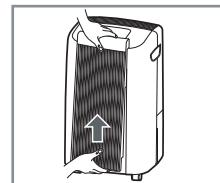


Fig.2

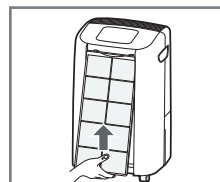


Fig.3

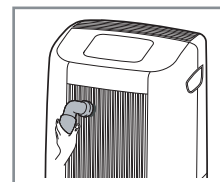


Fig.4

### CLEANING FRONT GRILLS AND AIR FILTER

1. Remove front grill by pulling out bottom towards you (Fig.1). Then hold the top of the grill and lift up gently to remove grill completely (Fig.2).

2. Pull the bottom of the filter out and lift the filter out (Fig.3).

Note : The filter is extremely flexible. The removal of the filter will not damage the filter

3. Wash with mild detergent and rinse thoroughly. Air dry away from direct sunlight.

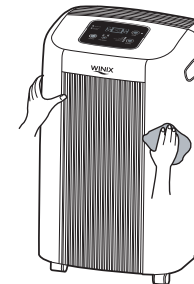
4. Install filter and grill back into unit following reverse directions listed above.

5. FRONT GRILL can be cleaned using a vacuum with a soft brush attachment to remove dust (Fig.4)

Filter should be cleaned every 2 weeks during peak operating season

### CLEANING THE EXTERIOR

Clean the exterior using a soft brush or dry towel. But do not spray water directly on the exterior.



### CLEANING THE BUCKET

Pull the bucket out. Lift off bucket cover. (Fig.1) Clean the inside of bucket every week using mild detergent in order to block buildup of mold and bacteria. (Fig.2)

After cleaning, replace the bucket cover and slide the bucket into the unit. (Fig.3) Check the float switch to make sure it is not obstructed. Proper position of the bucket and the float switch is required for the dehumidifier to turn on.

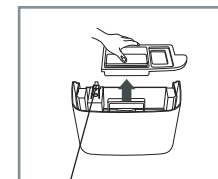


Fig.1

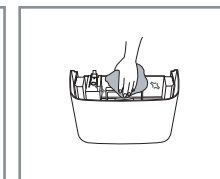


Fig.2

Float Switch

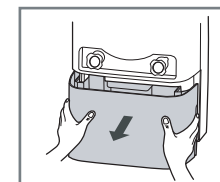


Fig.3



Microban® antimicrobial technology inhibits odor-causing bacterial growth on bucket surface.

## TROUBLESHOOTING

Before calling for service, try the suggestions below to see whether you can solve your problem without outside help.

PROBLEMS	CHECK POINT	SOLUTIONS
Dehumidifier does not work when pressing the POWER ON button.	Is the power cord plugged into a grounded 3-prong outlet? Is BUCKET FULL light on?  Does BUCKET FULL light appear after emptying the water bucket?	Plug the power cord securely into a grounded 3-prong outlet.  Empty the water bucket and re-install.  Check the float switch to make sure it is free and not obstructed.
Dehumidifier is running, but not drawing any water	Is the compressor running as well as the fan? Is there frost on the coils? Is the season late fall, winter, or early spring?	The unit may be in the defrost mode. The fan is running but not the compressor. The unit will return to dehumidification automatically.  Generally when temperatures drop outside during colder seasons, humidity levels drop causing the amount of moisture in the air to be minimal. This will result in the unit not drawing as much water as it does during warmer seasons.
Loud noise and/or vibration during operation.	Is the unit on a level surface?	Move the unit to a level surface.
Sounds.	Sounds like flowing water during and after operation. It makes a pinging sound.	This is the normal sound of the refrigerant flowing through the coils.  Normal sound of expansion and contraction caused by temperature changes.
Low airflow out of machine.	Are the filters and grills dirty?	Clean the FRONT GRILL and AIR FILTER.
Water does not drain through garden hose.	Check the DRAIN CONNECTOR making sure it is installed securely.  Check the garden hose for tangles or folds.	Re-install it according to this manual.  Flatten the hose or remove blockage.
Water does not drain through pump drain hose.	Check the connecting hose for tangles or folds.  Does pump display light appear?	Re-install drain hose according to this manual.  Flatten the hose or remove blockage.  Turn on the pump.

## ERROR CODES

Error Code	Error Type	Possible Causes	Corrective Actions
E3	Pump Drain	<ol style="list-style-type: none"> <li>1. Improper bucket installation.</li> <li>2. Blockage to drain hose system.</li> <li>3. Back flow of water through pump drain hose.</li> <li>4. Improper pump drain hose installation.</li> <li>5. Faulty drain pump.</li> </ol>	<ol style="list-style-type: none"> <li>1. Unplug the dehumidifier.</li> <li>2. Remove the bucket.</li> <li>3. Check to make sure that there is nothing blocking the connection at the base of the pump or the bucket.</li> <li>4. Reinstall the bucket, taking care that it is installed properly.</li> <li>5. Check to make sure that the pump drain hose is not crimped or blocked.</li> <li>6. Check to make sure that the pump drain hose is not both under water and sitting at a height above the dehumidifier – this can cause a “back flow” of water from the hose to the dehumidifier.</li> <li>7. Remove and reinstall the pump drain hose, taking care that the pump drain hose is installed properly.</li> <li>8. Plug the dehumidifier in and restart</li> </ol>

## PRODUCT SPECIFICATIONS

Classification	Specification		Remark
Model	WDH 871	WDH 851	
Power Supply	AC 115V/60(Hz)	AC 115V/60(Hz)	
Moisture Capacity	70 Pints	50 Pints	24-Hour Period
Control Type	Electronic	Electronic	
Refrigerant	R-410A / 11.29 OZ	R-410A / 9.88 OZ	320g/280g
Humidity Setting	35-70%	35-70%	5% Increments
Cycle Run Time	3,6,12 Hr	3,6,12 Hr	
Fan Motor Speed	2 Stage	2 Stage	High/Low
Dimensions	15.75X26.3X13.31 in	15.75X26.3X13.31 in	400x668x338mm
Net Weight	47.8 lbs (21.7Kg)	46.7 lbs (21.2Kg)	
Operating Temp.	36°F-99°F	36°F-99°F	
Drain Pump	12V DC	12V DC	
Pump Drain Hose	0.25 in X 18 ft (6.35 X 5,486 mm)	0.25 in X 18 ft (6.35 X 5,486 mm)	
Recommended Room Size	Winix dehumidifiers are suitable for use in large basements to small rooms.		